

Producer Price Indices

MM22

Data for October 2010

Editor: Patrick Fice
Newport: Office for National Statistics
Published: 16 November 2010
Crown copyright © 2010

A National Statistics publication

National Statistics are produced to high professional standards set out in the Code of Practice for Official Statistics. They are produced free from political influence.

About us

The Office for National Statistics

The Office for National Statistics (ONS) is the executive office of the UK Statistics Authority, a non-ministerial department which reports directly to Parliament. ONS is the UK government's single largest statistical producer. It compiles information about the UK's society and economy, and provides the evidence-base for policy and decision-making, the allocation of resources, and public accountability. The Director-General of ONS reports directly to the National Statistician who is the Authority's Chief Executive and the Head of the Government Statistical Service.

The Government Statistical Service

The Government Statistical Service (GSS) is a network of professional statisticians and their staff operating both within the Office for National Statistics and across more than 30 other government departments and agencies.

Contacts

This publication

For information about the content of this publication, contact

Editor: Patrick Fice

Tel: 01633 455941

Email: patrick.fice@ons.gsi.gov.uk

Other customer enquiries

ONS Customer Contact Centre

Tel: 0845 601 3034

International: +44 (0)845 601 3034

Minicom: 01633 812399

Email: info@statistics.gsi.gov.uk

Fax: 01633 455606

Post: Room 1015, Government Buildings,
Cardiff Road, Newport, South Wales NP10 8XG
www.ons.gov.uk

Media enquiries

Tel: 0845 604 1858

Email: press.office@ons.gsi.gov.uk

Copyright and reproduction

© Crown copyright 2010

Published with the permission of the Office of Public Sector Information (OPSI)

You may use this publication (excluding logos) free of charge in any format for research, private study or internal circulation within an organisation providing it is used accurately and not in a misleading context. The material must be acknowledged as Crown copyright and you must give the title of the source publication. Where we have identified any third party copyright material you will need to obtain permission from the copyright holders concerned.

For re-use of this material you must apply for a Click-Use Public Sector Information (PSI) Licence from:

Office of Public Sector Information, Crown Copyright Licensing and Public Sector Information, Kew, Richmond, Surrey, TW9 4DU

Tel: 020 8876 3444

www.opsi.gov.uk/click-use/index.htm

BACKGROUND TO PRODUCER PRICES

INTRODUCTION

This publication contains price information from UK manufacturers and importers. All data is now based on the Standard Industrial Classification SIC (2007).

PRODUCER PRICES IMPLEMENTATION OF SIC 2007

Producer prices (PPI) implemented the change onto the Standard Industrial Classification of All Economic Activities 2007 (UKSIC 2007) in November 2010. The most significant change to PPI output prices is the reclassification of recovered secondary raw materials (i.e. recycling) and publishing out of manufacturing and into the service sector. The SIC 2007 project has included fundamental changes made to the classification of the PPI Trade surveys, import price indices (IPI) and export price indices (EPI). The collection of these is now on an SIC basis, a switch for the Standard International Trade Classification (SITC) and Combined Nomenclature (CN) previously used. As a result PPI trade surveys are now compliant with Eurostat Short Term Statistics Regulation. This change of classification used will have a direct impact on the framework structure of PPI input prices, as IPI's account for a large proportion of total input price sales.

Further information on the changes and impact of the SIC 2007 on the PPI can be found by following this link:

www.statistics.gov.uk/downloads/theme_economy/ppi-sppi-implementation-of-sic2007.pdf

WHAT ARE PRODUCER PRICES?

Producer Price Indices (PPIs) are a series of economic indicators that measure the price movement of goods bought and sold by UK manufacturers. It is a base weighted index working on the basket of goods concept. A wide range of representative products are selected and the prices of these goods collected each month. The movement in these prices are weighted to reflect the relative importance of the products in a chosen year (known as the base year) currently 2005. These are then aggregated for various sectors of industry to provide the published indices in the monitor.

The input PPIs (table 3) measure changes in the price of materials and fuel bought by manufacturers for processing. The output PPIs (table 4) indicate changes in the prices manufacturers charge for goods destined for the UK market as they leave the factory net of VAT and after discounts.

More information can be found on our website

<http://www.statistics.gov.uk/ppi>

National Statistics Online:

www.statistics.gov.uk

Users can download time series, cross sectional data and metadata from across the Government Statistical Service (GSS) using the search and index functions from the homepage. Many datasets can be downloaded, in whole or in part, and directory information for all GSS statistical resources can be consulted, including censuses, surveys, periodicals and enquiry services. Information is posted as PDF electronic documents or in XLS and CSV formats, compatible with most spreadsheet packages.

Time Series Data

The Time Series data facility on the website provides access to around 40,000 time series, of primarily macro-economic data, drawn from the main tables in a range of our major economic and market publications. Users can download complete releases, or view and download customised selections of individual time series.

<http://www.statistics.gov.uk/statbase/tsdintro.asp>

| |
|--|
| PRODUCER PRICE INDICES MM22 TABLE OF CONTENTS |
|--|

| | | |
|----------------|--|----------------|
| Table 1 | Price indices of materials and fuels purchased – all manufacturing and selected industries SIC(2007) | Page 22 |
| Table 2 | Price indices of United Kingdom output – all manufacturing and selected industries SIC(2007) | Page 24 |
| Table 3 | Price indices of materials and fuels purchased by detailed manufacturing industries SIC(2007) | Page 25 |
| Table 4 | Price indices of products manufactured in the United Kingdom SIC(2007) | Page 30 |
| Table 5 | Price indices of commodities imported into the United Kingdom SIC(2007) | Page 42 |
| Table 6 | Price indices of goods exported from the United Kingdom SIC(2007) | Page 46 |

INFORMATION

How to use this Publication

Need Some Help?

This publication gives you all the available information on price data. However, if you have any technical queries the following help line is available and staff will be happy to take your call:

☎ (01633) 455941

For general enquiries and tables 1 to 6.

Alternatively you can email us at ppi@ons.gov.uk

Publication Dates

The dates on which this publication is available in 2010/2011 are:
21 December 2010

| | | |
|------------------|----------------|-------------------|
| 25 January 2011 | 17 May 2011 | 20 September 2011 |
| 22 February 2011 | 21 June 2011 | 18 October 2011 |
| 22 March 2011 | 19 July 2011 | 22 November 2011 |
| 19 April 2011 | 16 August 2011 | 20 December 2011 |

What is MM22?

This publication is produced monthly and provides price movement data at all manufacturing, aggregated industry and product group level. It consists of data supplied from individual UK manufacturers, importers and exporters.

What's Included?

The Producer Price Indices are calculated from the price movements of around 6,750 closely defined materials and products purchased (including imports) and manufactured by UK industry. This price data is converted into a basic set of price indices from which broad series are built up. Products destined for sale in the UK are grouped in accordance with the Standard Industrial Classification 2007 with weighting patterns based on overall purchases and sales by manufacturers within those groupings. The indices published in this monitor are widely used by business in price escalation clauses in contracts and for monitoring price movements in the products they trade.

A number of export price indices classified to the European harmonised tariff code system are published in table 6. Coverage is being extended to include other areas of manufacturing exports.

Special Indices

ONS may for a charge, make up a special index for you and provide regular monthly updates. Each case is considered against the resources required to produce and maintain the series requested.

If you would like more details of this service please call **(01633) 455941** or write to the following address **National Statistics, Publication Section, Room 1.227, Government Buildings, Cardiff Road, Newport, South Wales, NP10 8XG** or email us at ppi@ons.gov.uk

Data Formats

Data can be downloaded in either plain text file or Navidata[®] 3.1 formats. Navidata[®] 3.1 is free software developed specifically for analysing and using economic time series data - it enables you to create tables and charts, and export in CSV (comma or tab separated) formats which are compatible with your PC's spreadsheet software [Download Navidata[®] 3.1 software](#) and a [sample dataset](#).

NOTES

Reading the data

These notes should help you interpret the information in the following tables.

What are Net Sector Output Indices?

The weighting patterns used to calculate net sector output indices exclude transactions between companies classified to the same sector e.g. manufacturing sector or manufacturing excluding food, drink, tobacco and petroleum. For example, for Net Sector Output purposes, the value of an electronic component manufacturer's sales to a car manufacturer would be excluded from the weighting patterns used to derive final index values (thereby reflecting the value of sales to only those purchasers outside the manufacturing sector).

What are Gross Sector Output Indices?

This series is found in tables 2 and 4 represents the price movement of goods sold within the UK by companies classified to manufacturing as defined by SIC (2007). Weights are calculated on a gross basis i.e. all transactions are included in deriving the weighting patterns, including sales within the same industry.

| | |
|---|--|
| What are Input/Output Group Input Indices? | This series represents the price movement of materials and fuels purchased by UK manufacturers and is found in table 3. The I/O group input series all include purchases of materials and fuel including those between manufacturers classified to the same sector of industry (e.g. one chemical manufacturer to another). |
| How are Export Prices calculated? | The Export Price Indices (EPIs) use broadly the same methodology as the PPI. A range of representative products are selected and the prices of these goods collected each month from established exporters within specified 6 digit SIC (2007) codes. The movement in these prices are weighted to reflect the relative importance of these products and aggregated to provide the published indices in table 6. The series are calculated on a base year of 2005=100. |
| What about VAT and Excise Duties? | All indices are compiled exclusive of Value Added Tax. Excise duties (on cigarettes, tobacco, alcoholic liquor and hydrocarbon oils) are included except where specified otherwise. |
| What about Provisional Data? | Indices for the latest two months are provisional and flagged with a 'p' marker due to the level of imputation present for items where the latest prices are not available. The latest five months are subject to revisions in light of (a) late and revised contributor data and (b) revisions to seasonal adjustment factors which are re-estimated every month. |
| What about Revisions? | Occasionally, information is received that produces a change in an index value that has already been published as firm. Where the change is significant, index values are recalculated and annotated with an 'r' marker. More information on the cause of the revisions is presented in the PPI Statistical Bulletin http://www.statistics.gov.uk/StatBase/Product.asp?vlnk=790 |
| What about Price Changes? | The monthly index data relates to an average calculation for the month. The effect of price changes occurring part way through the period will only be reflected in an index in the following month's publication. |

No Data?

You will see that various symbols are used throughout this publication to provide meaning to the gaps in the data or where the quality of the index values is reduced. There are a number of these and the following key will provide an explanation:

B These index values are considered less reliable mainly due to the lack of market coverage.

F Indices labelled F in Table 4 are based on relatively few quotes and in the long term should not be relied upon for contractual purposes.

" These values have been suppressed because the index would risk disclosure of individual price movements.

n.e.c. Not elsewhere classified.



Coverage: United Kingdom **Theme:** The Economy

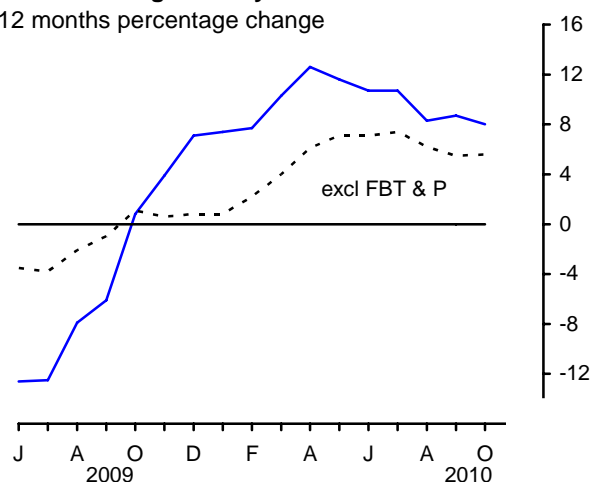
Input prices: summary

The input price index for materials and fuels purchased by manufacturing industry rose 8.0 per cent in the year to October and rose 2.1 per cent between September and October. The rise in the input index between September and October mainly reflected rises in the price of crude oil, fuels (inc. CCL), other imported parts and equipment and imported metals.

Prices of imported materials as a whole (including crude oil) rose 2.2 per cent between September and October.

The input price index for manufacturing industry excluding the food, beverages, tobacco and petroleum industries rose 5.6 per cent in the year to October. Seasonally adjusted, the index rose 1.3 per cent between September and October.

Input prices (materials & fuel)
manufacturing industry
12 months percentage change



Input prices^{1, 2}

| | | Materials and fuels purchased | | Excluding food, beverages, tobacco and petroleum industries | | |
|-------------------|-----|-------------------------------|---------------|---|---------------|--------------|
| | | 12 months (NSA) | 1 month (NSA) | 12 months (NSA) | 1 month (NSA) | 1 month (SA) |
| Percentage change | | | | | | |
| 2010 | May | 11.6 | -0.2 | 7.1 | 0.7 | 0.4 |
| | Jun | 10.7 | -0.3 | 7.1 | -0.9 | -0.2 |
| | Jul | 10.7 | -0.8 | 7.4 | 0.3 | 0.2 |
| | Aug | 8.3 | 0.0 | 6.2 | -0.3 | 0.4 |
| | Sep | 8.7 | 0.4 | 5.5 | 0.5 | 0.4 |
| | Oct | 8.0 | 2.1 | 5.6 | 1.7 | 1.3 |

NSA/SA not/seasonally adjusted

1 These indices include the Climate Change Levy which was introduced in June 2001

2 These indices include the Aggregates Levy which was introduced in June 2002

Standard Industrial Classification 2007 (SIC 2007)

Indices in this PPI Statistical Bulletin have been reclassified onto SIC 2007.

A long run of back data is available on the Office for National Statistics

website under related link: www.statistics.gov.uk/ppi

Seasonal adjustment

The routine seasonal adjustment review that is normally conducted in the autumn each year was incorporated this year as part of the SIC 2007 reclassification project. This will include revisions to seasonal adjustment factors which are re-estimated every month.

Revisions (Tables 8R and 9R)

For this bulletin Tables 8R and 9R highlight revisions to movements in price indices previously published in last month's Statistical Bulletin. These are mainly caused by the effect of the reclassification project, but there will also be changes to the most recent estimates as more price quotes are received and also revisions to seasonal adjustment factors, which are re-estimated every month.

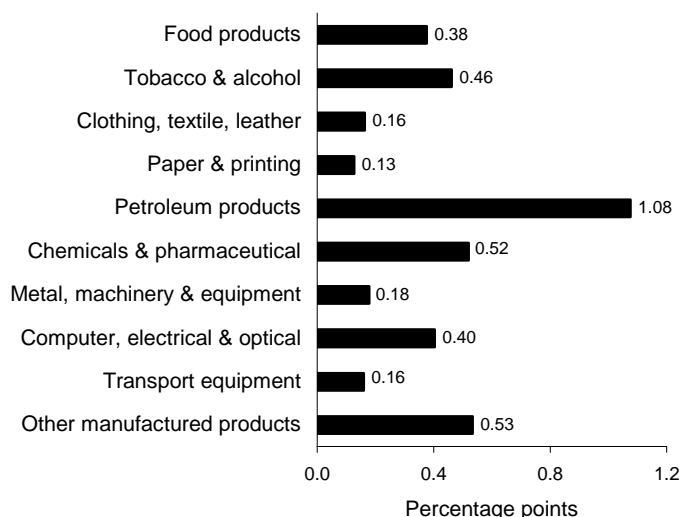
Output prices: detail

The contributions to movements in the total output index by the main product groups over the last year and month (not seasonally adjusted) are:

12 month change to October

| Product group | Percentage change |
|--------------------------------|-------------------|
| Food products | 2.4 |
| Tobacco & alcohol | 4.4 |
| Clothing, textiles, leather | 1.4 |
| Paper & printing | 3.3 |
| Petroleum products | 10.6 |
| Chemicals & pharmaceuticals | 6.0 |
| Metal, machinery & equipment | 5.1 |
| Computer, electrical & optical | 4.5 |
| Transport equipment | 1.4 |
| Other manufactured products | 3.0 |
| All manufacturing | 4.0 |

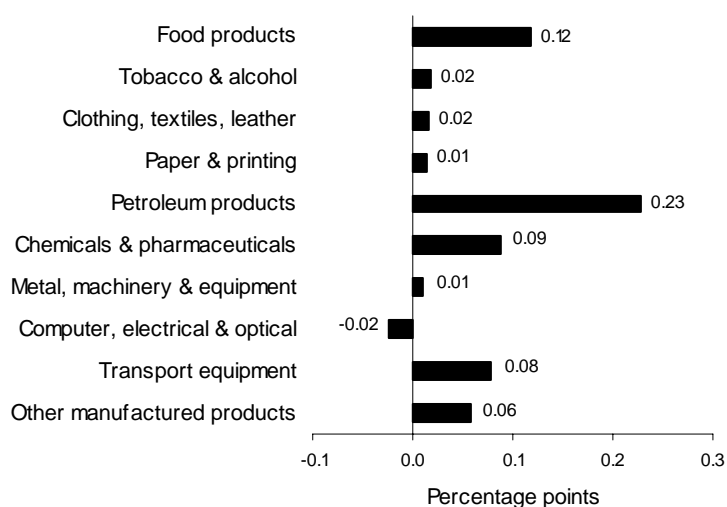
Contribution to 12 months percentage change in total (4.0%)



1 month change to October

| Product group | Percentage change |
|--------------------------------|-------------------|
| Food products | 0.7 |
| Tobacco & alcohol | 0.2 |
| Clothing, textiles, leather | 0.2 |
| Paper & printing | 0.4 |
| Petroleum products | 2.1 |
| Chemicals & pharmaceuticals | 0.9 |
| Metal, machinery & equipment | 0.3 |
| Computer, electrical & optical | -0.3 |
| Transport equipment | 0.7 |
| Other manufactured products | 0.3 |
| All manufacturing | 0.6 |

Contribution to 1 month percentage change in total (0.6%)



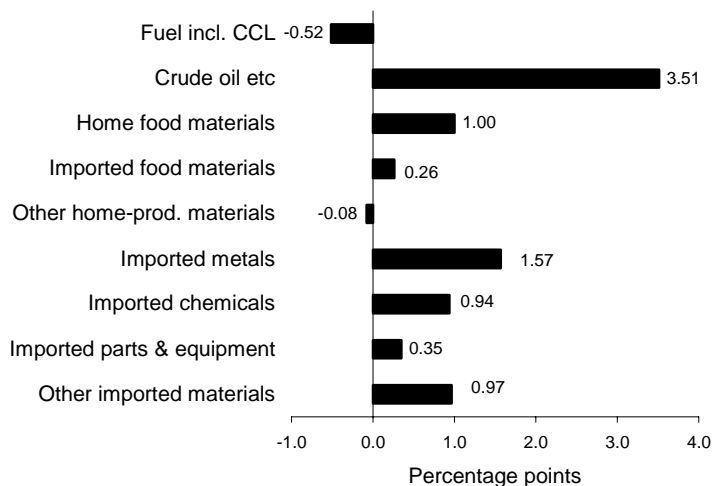
Input prices: detail

The contributions to movements in the total input index by the main commodities over the year and month (not seasonally adjusted) are:

12 month change to October

| Product group | Percentage change |
|----------------------------|-------------------|
| Fuel incl. CCL | -4.8 |
| Crude oil etc | 16.2 |
| Home food materials | 9.8 |
| Imported food materials | 4.5 |
| Other home-prod. materials | -1.7 |
| Imported metals | 20.5 |
| Imported chemicals | 8.0 |
| Imported parts & equipment | 2.0 |
| Other imported materials | 9.5 |
| All manufacturing | 8.0 |

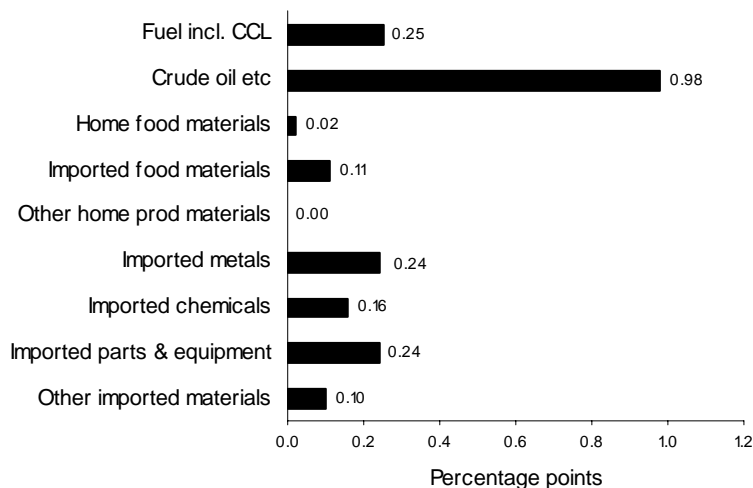
Contribution to 12 months percentage change
in total (8.0%)



1 month change to October

| Product group | Percentage change |
|----------------------------|-------------------|
| Fuel incl. CCL | 2.6 |
| Crude oil etc | 4.2 |
| Home food materials | 0.2 |
| Imported food materials | 1.9 |
| Other home-prod. materials | 0.0 |
| Imported metals | 2.8 |
| Imported chemicals | 1.3 |
| Imported parts & equipment | 1.4 |
| Other imported materials | 0.9 |
| All manufacturing | 2.1 |

Contribution to 1 month percentage change
in total (2.1%)



Summary of statistics for producer prices – October 2010

Output prices

The overall output price index rose 4.0 per cent in the year to October, compared with a rise of 3.8 per cent in the year to September. The index rose 0.6 per cent between September and October 2010, mainly reflecting price rises in petroleum products (including duty), food products and chemical and pharmaceutical products. This is the largest monthly rise since April 2010 when the index rose 1.0 per cent. Between September and October 2009 the index rose 0.4 per cent.

Petroleum products (including duty) prices rose 2.1 per cent between September and October and rose by 10.6 per cent in the year to October. The monthly rise was mainly due to a rise of 3.3 per cent in the price of diesel and gas oil and a 1.7 per cent rise in unleaded petrol.

Food product prices rose 0.7 per cent between September and October and rose by 2.4 per cent in the year to October. This is the highest annual rate since June 2009 when the index rose 2.5 per cent. The monthly rise was mainly due to a 1.6 per cent rise in the price of preserved meat and meat products, a 3.1 per cent rise in the price of grain mill products, starches and starch products and a 1.8 per cent rise in prepared animal feeds.

Chemical and pharmaceutical prices rose 0.9 per cent between September and October and rose by 6.0 per cent in the year to October. The monthly rise was mainly due to a rise of 2.4 per cent in the price of chemicals, most notably fertilisers and synthetic rubber products.

Apart from computer, electrical and optical products all other product groups recorded price rises in the month of October.

The output price index for manufactured products excluding food, beverages, tobacco and petroleum rose 3.3 per cent in the year to October, compared with a rise of 3.4 per cent in the year to September. This index is not affected by changes in excise duty. The index rose 0.4 per cent between September and October 2010 compared with a rise of 0.5 per cent between September and October 2009.

The output price index for all manufactured products excluding excise duties is shown in Table 3 of the Statistical Bulletin. This index rose 3.9 per cent in the year to October, compared with a rise of 3.6 per cent in the year to September. The index excluding excise duties rose 0.6 per cent between September and October 2010, compared with a rise of 0.4 per cent between September and October 2009.

Input prices

The overall input index rose 8.0 per cent in the year to October, compared with a rise of 8.7 per cent in the year to September (Table 5). This is the lowest annual rate since February 2010, when the index rose 7.7 per cent.

The input index for all manufacturing rose 2.1 per cent between September and October compared with a rise of 2.8 per cent between September and October 2009. The monthly rise in the input index is the largest since March 2010 when the index rose 3.9 per cent.

The monthly rise in the input index between September and October mainly reflected rises in the price of crude oil, fuels (inc. CCL), other imported parts and equipment and imported metals.

Crude oil prices rose 4.2 per cent between September and October and rose 16.2 per cent in the year to October. The monthly rise in the input index is the largest since April 2010, when the index rose 4.6 per cent.

Fuel (inc CCL) prices rose 2.6 per cent between September and October but fell 4.8 per cent in the year to October. The monthly rise was mainly due to a seasonal increase of 8.2 per cent in the price of gas (inc CCL).

Other imported parts and equipment prices rose 1.4 per cent between September and October and rose 2.0 per cent in the year to October. The monthly rise was mainly due to widespread increases across a range of imported products, most notably for electronic components and boards and parts and accessories for motor vehicles.

Imported metal prices rose 2.8 per cent between September and October and rose by 20.5 per cent in the year to October. The monthly rise was mainly due to widespread increases across a range of imported metals, most notably precious and base metals, and iron and steel products.

Apart from other home produced materials remaining unchanged all other product groups recorded price rises in the month of October.

The index for materials and fuels purchased by manufacturing industry excluding the food, beverages, tobacco and petroleum industries rose 1.3 per cent in seasonally adjusted terms between September and October. The unadjusted index rose 5.6 per cent in the year to October, compared with a rise of 5.5 per cent in the year to September (Table 5).

More information on producer prices can be found at: www.statistics.gov.uk/ppi.

October records – Output prices

| | |
|--|--|
| All manufactured products | Annual rate 4.0%, up from 3.8% last month. Last higher in August 2010 (4.2%). Monthly rate 0.6% up from 0.0% last month. Last higher in April 2010 (1.0%). |
| Excluding food, beverages, tobacco and petroleum | Annual rate 3.3%, down from 3.4% last month. Last lower in May 2010 (3.2%). Monthly rate 0.4% up from 0.1% last month. Also 0.4% in April, May & June 2010. Last higher in March 2010 (0.5%). |
| All manufactured products excluding duty | Annual rate 3.9%, up from 3.6% last month. Also 3.9% in August 2010. Last higher in July 2010 (4.0%). Monthly rate 0.6% up from 0.0% last month. Last higher in April 2010 (0.7%). |
| Food products | Annual rate 2.4%, up from 1.1% last month. Last higher in June 2009 (2.5%). Monthly rate 0.7% up from -0.2% last month. Also 0.7% in July 2010 and August 2008. Last higher in June 2008 (1.1%). |
| Tobacco and alcohol (inc duty) | Annual rate 4.4%, down from 4.7% last month. Also 4.4% in August 2010. Last lower in July 2010 (3.8%). Monthly rate 0.2% up from 0.1% last month. Last higher in May 2010 (0.9%). |
| Clothing, textiles and leather | Annual rate 1.4%, up from 1.3% last month. Last higher in August 2010 (1.6%). Monthly rate 0.2% up from -0.2% last month. Last higher in July 2010 (0.4%). |
| Paper and printing | Annual rate 3.3%, down from 4.1% last month. Last lower in July 2010 (3.1%). Monthly rate 0.4% up from 0.2% last month. Last higher in July 2010 (0.5%). |
| Petroleum products | Annual rate 10.6%, up from 9.6% last month. Last higher in August 2010 (11.7%). Monthly rate 2.1% up from 0.0% last month. Last higher in April 2010 (4.5%). |
| Chemical and pharmaceutical products | Annual rate 6.0%, up from 4.9% last month. Last higher in July 2010 (6.2%). Monthly rate 0.9% up from 0.4% last month. Last higher in April 2010 (1.1%). |
| Metal, machinery and equipment nec | Annual rate 5.1%, up from 5.0% last month. Last higher in February 2009 (5.6%). Monthly rate 0.3% the same monthly rate for the previous 3 months. Last higher in May 2010 (1.1%). |
| Computer, electrical and optical equipment | Annual rate 4.5%, down from 6.9% last month. Last lower in November 2009 (2.6%). Monthly rate -0.3% down from 0.1% last month. Also -0.3% in August 2010. Last lower in March 2009 (-0.7%). |
| Transport equipment | Annual rate 1.4%, up from 1.3% last month. Last higher in July 2010 (1.6%). Monthly rate 0.7% up from 0.3% last month. Last higher in April 2009 (1.0%). |
| Other manufactured products | Annual rate 3.0%, up from 2.9% last month. Last higher in August 2010 (3.1%). Monthly rate 0.3% up from 0.1% last month. Also 0.3% in May and June 2010. Last higher in April 2010 (0.4%). |

October records – Input Prices

| | |
|---|---|
| Materials and fuels purchased | Annual rate 8.0%, down from 8.7% last month. Last lower in February 2010 (7.7%). Monthly rate 2.1% up from 0.4% last month. Last higher in March 2010 (3.9%). |
| Excluding food, beverages, tobacco and petroleum industries | Annual rate 5.6%, up from 5.5% last month. Last higher in August 2010 (6.2%). Monthly rate 1.7% up from 0.5% last month. Last higher in March 2010 (2.5%). |
| Fuel including climate change levy | Annual rate -4.8%, down from 1.5% last month. Last lower in May 2010 (-7.2%). Monthly rate 2.6% up from -2.0% last month. Last higher in May 2010 (4.6%). |
| Crude oil etc | Annual rate 16.2%, down from 20.0% last month. Last lower in August 2010 (14.1%). Monthly rate 4.2% up from 0.2% last month. Last higher in April 2010 (4.6%). |
| Home food materials | Annual rate 9.8%, up from 8.5% last month. Last higher in October 2008 (12.1%). Monthly rate 0.2% up from -0.5% last month. Last higher in August 2010 (2.3%). |
| Imported food materials | Annual rate 4.5%, up from 3.3% last month. Last higher in October 2009 (4.8%). Monthly rate 1.9% up from 1.5% last month. Also 1.9% in March 2010. Last higher in December 2008 (2.6%). |
| Other home-produced materials | Annual rate -1.7%, down from 0.2% last month. Last lower in July 2010 (-2.4%). Monthly rate 0.0% up from -0.8% last month. Last higher in August 2010 (0.2%). |
| Imported metals | Annual rate 20.5%, up from 18.0% last month. Last higher in July 2010 (24.5%). Monthly rate 2.8% down from 3.7% last month. Last lower in August 2010 (0.7%). |
| Imported chemicals | Annual rate 8.0%, up from 7.7% last month. Last higher in August 2010 (8.8%). Monthly rate 1.3% up from 0.7% last month. Last higher in May 2010 (1.5%). |
| Imported parts and equipment | Annual rate 2.0%, up from 1.8% last month. Last higher in August 2010 (3.0%). Monthly rate 1.4% up from 0.7% last month. Last higher in March 2010 (2.5%). |
| Other imported materials | Annual rate 9.5%, unchanged since last month. Last lower in May 2010 (8.7%). Monthly rate 0.9% down from 1.1% last month. Last lower in August 2010 (-1.0%). |

Background Notes

BASIC QUALITY INFORMATION

Key issues specific to this release

Implementation of SIC 2007 in ONS: Update on PPIs and SPPIs

1. Producer Prices has implemented the change to the Standard Industrial Classification 2007 (SIC 2007). The most significant change to PPI output prices involves the reclassification of 'recovered secondary raw materials' and 'publishing'. These will no longer be classified in the manufacturing sector, but will now be classified under services. In addition to this, a new SIC division, 'repair, installation and maintenance of machinery and equipment' has been created. Under SIC 2003 these activities were classified within the output of manufacturing, but as part of the specific industries where this activity took place.

Fundamental changes have been made to the classification of the PPI Trade surveys, Import Price indices (IPI) and Export Price Indices (EPI). As part of the reclassification project the classification of these trade surveys have become compliant with Eurostat's Short Term Statistics Regulation. The collection of IPI and EPI will now be on an SIC basis, a switch from the Standard International Trade Classification (SITC) and Combined Nomenclature (CN) previously used. PPI input prices are heavily dependant on IPI.

Further information on the changes and impact of the SIC 2007 on prices can be found by following these links:

www.statistics.gov.uk/statbase/Product.asp?vlnk=15375

www.statistics.gov.uk/StatBase/Product.asp?vlnk=790&Pos=1&ColRank=1&Rank=208

More general information on UK SIC 2007, including correlation tables can be found by following this link: www.statistics.gov.uk/statbase/Product.asp?vlnk=14012

Any comments about this work and its impact on PPI please contact ppi@ons.gov.uk.

Link to Summary Quality Report

2. A Summary Quality Report for the PPI can be found at:
www.ons.gov.uk/about-statistics/methodology-and-quality/quality/qual-info-economic-social-and-bus-stats/quality-reports-for-business-statistics/summary-quality-report-for-producer-price-indices.pdf

This report describes, in detail, the intended uses of the statistics presented in this

publication, their general quality and the methods used to produce them.

Relevance to users

3. Index numbers shown in the main text of this Statistical Bulletin are on a net sector basis. The index for any sector relates only to transactions between that sector and other sectors, sales and purchases within sectors are excluded. However, the more detailed figures shown in Tables 4 and 6 are on a gross basis; that is, intra industry sales and purchases are included in each of these indices.
4. Indices relate to average prices for a month. The full effect of a price change occurring partway through any month will only be reflected in the following month's index.
5. All index numbers exclude VAT. Excise duties (on cigarettes, manufactured tobacco, alcoholic liquor and petroleum products) are included, except where labelled otherwise. Since PPIs exclude VAT, they are not affected by the increase in the standard rate of VAT to 17.5 per cent from 1 January 2010.
6. The detailed input indices of prices of materials and fuels purchased by industry (Table 6) do not include the Climate Change Levy (CCL). This is because each industry can, in practice, pay its own rate for the various forms of energy, depending on the various negotiated discounts and exemptions that apply.

Common pitfalls in interpreting series

7. Expectations of accuracy and reliability in sample surveys are often too high. Revisions and sampling variability are inevitable consequences of the trade between timeliness, accuracy and the burden on respondents. Details of sampling variability are included elsewhere in this bulletin.
8. Very few statistical revisions arise as a result of 'errors' in the popular sense of the word. All estimates, by definition, are subject to statistical 'error' but, in this context, the word refers to the uncertainty in any process or calculation that uses sampling, estimation or modelling. Most revisions reflect either the adoption of new statistical techniques or the incorporation of new information which allows the statistical error of previous estimates to be reduced. Only rarely are there avoidable 'errors' such as human or system failures, and such mistakes are made quite clear when they are discovered and corrected.

Accuracy

9. Figures for the latest two months are provisional and the latest five months are subject to revisions in light of (a) late and revised respondent data and (b), for the seasonally adjusted series, revisions to seasonal adjustment factors which are re-estimated every month. The figures in this month's release include the effects of the SIC 2007 reclassification project and of the seasonality adjustment review, which was carried out on the SIC 2007 information. A routine seasonal adjustment review is normally conducted in the autumn annually. There are no planned methodological changes in the next 12 months.

Revisions

10. Revisions to data provide one indication of the reliability of key indicators. The tables below show summary information on the size and direction of the revisions which have been made to the data covering a five year period. A statistical test has been applied to the average revision to find out if it is statistically significantly different from zero. An asterisk (*) shows that the test is significant.
11. The table below presents a summary of the differences between the first estimates published between October 2004 and September 2009 and the estimates published 12 months later. These numbers include the effect of rebasing onto 2005=100 in October 2008 but will not include the effect of the reclassification onto SIC 2007. For more information on the effects of rebasing onto 2005=100 see:

www.statistics.gov.uk/articles/economic_trends/ETAugMorris.pdf

Revisions between first publication and estimates twelve months later

| | Value in latest period | Revisions between first publication and estimates twelve months later | |
|------------------------------------|------------------------|---|--|
| | | Average over the last 5 years | Average over the last 5 years without regard to sign (average absolute revision) |
| Total output (JVZ7) 12 months % | 4.0 | -0.01 | 0.08 |
| Total output (JVZ7) 1 months % | 0.6 | 0.04* | 0.08* |
| Total input (K646) 12 months % | 8.0 | 0.44* | 0.73* |
| Total input (K646) 1 months % | 2.1 | 0.17* | 0.48* |

12. Spreadsheets giving revisions triangles of estimates for all months from January 1998 through to September 2010 and the calculations behind the averages in the table is available on the National Statistics website at:
www.statistics.gov.uk/StatBase/Product.asp?vlnk=790

PUBLICATION POLICY

13. The complete run of data in the tables of this Statistical Bulletin are also available to view and download in other electronic formats free of charge using the National Statistics Time Series Data website service. Users can download the complete release in a choice of zipped formats or view and download their own selections of individual series. The Time Series Data service can be accessed at: www.statistics.gov.uk/statbase/tsdintro.asp
14. Details of the policy governing the release of new data are available from the press office. Also available is a list of the names of those given pre-publication access to the contents of this Statistical Bulletin. In the light of the timing of the MPC meeting, the PPI is provided to the Bank of England at 9.30am on Thursday in line with release protocols.
15. National Statistics are produced to high professional standards set out in the Code of Practice for Official Statistics. They undergo regular quality assurance reviews to ensure that they meet customer needs. They are produced free from any political interference.
© Crown Copyright 2010.
-

Next publication: 10 December 2010

Issued by: Office for National Statistics, Government Buildings, Cardiff Road, Newport NP10 8XG

Media contact:

Tel **Media Relations Office 0845 6041858**
 Emergency on-call 07867 906553
E-mail press.office@ons.gsi.gov.uk

Statistical contact:

Tel **Simon Woodsford +44 (0)1633 455917**
E-mail ppi@ons.gov.uk

Website: www.statistics.gov.uk/default.asp

1 Price indices of materials and fuel purchased: All manufacturing and selected industries - SIC 2007

Producer Prices Index: 2005=100, SIC2007

| | | | 2010 Mar | 2010 Apr | 2010 May | 2010 Jun | 2010 Jul | 2010 Aug | 2010 Sep | 2010 Oct | Annual Average ¹ 2009 |
|--|------|------------|-------------|-------------|-------------|-------------|-------------|-------------|-------------|-------------|--|
| Net Sector | | | | | | | | | | | |
| All manufacturing (materials and fuel purchased) ² | K646 | 6207000050 | 146.2 | 146.4 | 146.1 | 145.6 | 144.4 | 144.4 | 145.0p | 148.0p | 132.9 |
| Materials | K644 | 6207000010 | 144.8 | 146.6 | 145.6 | 145.1 | 143.4 | 143.5 | 144.5p | 147.4p | 129.4 |
| Fuel ² | K647 | 6207000060 | 160.2 | 144.3 | 150.9 | 150.7 | 154.5 | 153.5 | 150.4p | 154.3p | 167.9 |
| Materials and fuel purchased by manufacturing industry excluding food, beverages, tobacco and petroleum ² | K655 | 6207990050 | 137.6 | 137.1 | 138.1 | 136.8 | 137.2 | 136.8 | 137.5p | 139.8p | 130.5 |
| Materials | K653 | 6207990010 | 135.2 | 136.3 | 136.7 | 135.4 | 135.4 | 135.1 | 136.1p | 138.3p | 126.5 |
| Fuel ² | K656 | 6207990060 | 160.2 | 144.4 | 150.9 | 150.7 | 154.6 | 153.5 | 150.5p | 154.4p | 168.0 |
| Materials and fuel purchased by manufacturing industry excluding food, beverages, tobacco and petroleum ² | K658 | 6207998950 | 135.9 | 136.9 | 137.4 | 137.1 | 137.4 | 138.0 | 138.6p | 140.4p | 130.5 |
| Gross sector³ | | | | | | | | | | | |
| Other mining & quarrying products ⁴ | K5WC | 6112070000 | 123.5 | 123.6 | 124.6 | 124.2 | 124.7 | 124.5 | 124.7p | 126.4p | 131.0 |
| Manufacture of food products, beverages, tobacco | K5VS | 6107101200 | 129.0 | 128.7 | 131.0 | 131.6 | 130.4 | 131.4 | 131.4p | 132.7p | 127.9 |
| Food products and beverages | K5WE | 6112100000 | 130.2 | 129.8 | 131.8 | 131.2 | 130.7 | 131.9 | 131.9p | 133.2p | 128.8 |
| Tobacco products | K5WI | 6112120000 | 129.0 | 128.5 | 130.3 | 131.9 | 130.5 | 132.6 | 133.3p | 134.6p | 127.8 |
| Manufacture of textiles and textile products | K5VT | 6107131400 | 116.7 | 116.4 | 117.3 | 117.0 | 117.7 | 117.6 | 117.9p | 119.0p | 113.5 |
| Textiles | K5WJ | 6112130000 | 119.5 | 119.2 | 120.3 | 119.8 | 120.7 | 120.8 | 121.0p | 122.4p | 115.6 |
| Wearing apparel | K5WK | 6112140000 | 112.5 | 112.2 | 112.7 | 112.6 | 112.9 | 112.8 | 113.0p | 113.6p | 110.2 |
| Manufacture of leather and related products | K5VU | 6107150000 | 122.1 | 123.1 | 124.6 | 123.5 | 123.5 | 123.1 | 122.7p | 123.3p | 120.0 |
| Manufacture of wood and wood products | K5VV | 6107160000 | 125.2 | 125.6 | 126.8 | 127.0 | 128.2 | 128.8 | 129.1p | 129.7p | 120.3 |
| Manufacture of pulp, paper & paper products, recording media and printing services | K5VW | 6107171800 | 116.7 | 116.7 | 118.0 | 118.4 | 119.2 | 119.3 | 119.7p | 120.5p | 113.8 |
| Pulp, paper and paper products | K5WN | 6112170000 | 123.0 | 122.9 | 124.9 | 125.5 | 127.0 | 127.2 | 127.8p | 128.9p | 119.2 |
| Printing and recording services | K5WO | 6112180000 | 112.5 | 112.6 | 113.3 | 113.6 | 114.0 | 114.0 | 114.2p | 114.9p | 110.1 |
| Manufacture of coke and refined petroleum products | K5VX | 6107190000 | 173.9 | 181.5 | 170.6 | 168.1 | 165.7 | 166.3 | 166.6p | 173.3p | 131.4 |
| Manufacture of chemicals, chemical products and man-made fibres | K5VY | 6107200000 | 136.6 | 137.7 | 139.7 | 138.1 | 139.9 | 140.5 | 141.0p | 143.7p | 128.7 |
| Manufacture of rubber and plastic products | K5W2 | 6107220000 | 129.3 | 130.1 | 131.6 | 130.3 | 131.7 | 132.0 | 132.3p | 134.2p | 121.6 |
| Manufacture of other non-metallic mineral products | K5W3 | 6107230000 | 128.8 | 126.7 | 128.7 | 128.5 | 129.7 | 129.1 | 129.3p | 130.4p | 126.8 |
| Manufacture of basic metals and fabricated products | K5W4 | 6107242500 | 129.7 | 132.8 | 135.1 | 134.8 | 136.1 | 135.8 | 136.4p | 137.8p | 123.3 |
| Basic metals | K5WU | 6112240000 | 130.9 | 133.3 | 135.6 | 135.3 | 136.4 | 136.1 | 136.6p | 138.1p | 125.0 |
| Fabricated metal products, except machinery and equipment | K5WV | 6112250000 | 127.9 | 131.7 | 134.0 | 133.9 | 135.4 | 135.2 | 135.7p | 137.0p | 121.8 |
| Manufacture of computer, electronic and optical products, electrical equipment | K5W5 | 6107262700 | 117.0 | 117.8 | 118.8 | 119.1 | 119.3 | 118.4 | 118.7p | 119.3p | 113.1 |
| Computer, electronic and optical products | K5WW | 6112260000 | 113.2 | 113.6 | 114.5 | 115.0 | 115.1 | 113.8 | 113.9p | 114.1p | 109.6 |
| Electrical equipment | K5WX | 6112270000 | 121.5 | 122.7 | 123.9 | 123.9 | 124.4 | 123.9 | 124.5p | 125.4p | 117.2 |
| Manufacture of machinery and equipment nec | K5W6 | 6107280000 | 119.6 | 120.6 | 121.7 | 121.9 | 122.5 | 122.1 | 122.4p | 123.2p | 116.3 |
| Manufacturing of motor vehicles and other transport equipment | K5W7 | 6107293000 | 120.5 | 120.9 | 121.6 | 121.6 | 121.6 | 121.3 | 121.8p | 122.8p | 116.3 |
| Motor vehicles, trailers and semi trailers | K5WZ | 6112290000 | 120.1 | 120.5 | 121.1 | 121.2 | 121.2 | 120.9 | 121.4p | 122.4p | 116.2 |
| Other transport equipment | K5X2 | 6112300000 | 122.4 | 123.1 | 124.4 | 124.0 | 123.6 | 123.4 | 123.7p | 124.3p | 116.6 |

1 Average index value for the calendar year January to December 2009.

4 Indices include the Aggregate Levy which was introduced in April 2002.

2 These indices include the Climate Change Levy which was introduced in April 2001.

p = provisional
r = revised

3 Climate Change Levy is excluded from the detailed industry input index (unless otherwise stated)

Source: Office for National Statistics

1 Price indices of materials and fuel purchased: All manufacturing and selected industries - SIC 2007

continued

| | | | 2010 Mar | 2010 Apr | 2010 May | 2010 Jun | 2010 Jul | 2010 Aug | 2010 Sep | 2010 Oct | Annual average ¹ 2009 |
|--|------|------------|-------------|-------------|-------------|-------------|-------------|-------------|-------------|-------------|--|
| Manufacture of other manufactured goods nec | κ5W8 | 6107313300 | 121.3 | 122.4 | 123.6 | 123.5 | 124.1 | 123.9 | 124.3p | 125.2p | 117.1 |
| Electricity, including Climate Change Levy | κ696 | 7167880000 | 186.3 | 173.7 | 173.2 | 173.3 | 174.8 | 175.1 | 172.9p | 173.3p | 193.1 |
| Gas, including Climate Change Levy | κ697 | 7167890000 | 120.7 | 99.8 | 117.2 | 116.5 | 124.2 | 121.3 | 116.4p | 126.0p | 129.7 |
| Collection, purification & distribution of water | κ698 | 7167900000 | 134.9 | 135.6 | 135.6 | 135.6 | 135.6 | 135.6 | 135.6p | 135.6p | 133.2 |

1 Average index value for the calendar year January to December 2009.

2 Price indices of United Kingdom output: All manufacturing and selected industries - SIC 2007

Producer Prices Index: 2005=100, SIC2007

| | | | 2010 Mar | 2010 Apr | 2010 May | 2010 Jun | 2010 Jul | 2010 Aug | 2010 Sep | 2010 Oct | Annual Average ¹ 2009 |
|--|------|------------|-------------|-------------|-------------|-------------|-------------|-------------|-------------|-------------|--|
| Net sector | | | | | | | | | | | |
| Output of manufactured products | JVZ7 | 7200700000 | 116.7 | 117.9 | 118.3 | 118.1 | 118.1 | 118.2 | 118.2p | 118.9p | 113.2 |
| All manufacturing, excluding duty | JVZ8 | 7200700010 | 115.5 | 116.3 | 116.8 | 116.6 | 116.7 | 116.8 | 116.8p | 117.5p | 112.2 |
| All manufacturing, excluding food, beverages, tobacco and petroleum | K3BI | 7200799000 | 111.8 | 112.2 | 112.6 | 113.0 | 113.2 | 113.2 | 113.3p | 113.7p | 109.4 |
| Gross Sector | | | | | | | | | | | |
| Output of all manufactured products | K36V | 7100700000 | 119.4 | 121.0 | 121.5 | 120.9 | 121.0 | 121.0 | 121.1p | 122.0p | 114.6 |
| Manufactured products excluding food, beverages, tobacco and petroleum | K36X | 7100799000 | 114.1 | 114.7 | 115.3 | 115.6 | 116.0 | 116.1 | 116.3p | 116.8p | 111.8 |
| Other mining and quarrying | K37K | 7112088000 | 120.9 | 118.3 | 117.8 | 118.0 | 122.0 | 122.4 | 121.1p | 121.1p | 124.8 |
| Food products, beverages and tobacco, including duty | K65A | 7111101280 | 122.6 | 123.8 | 124.4 | 123.7 | 124.1 | 124.5 | 124.2p | 124.9p | 121.3 |
| Food products | K37L | 7112100000 | 121.9 | 122.5 | 122.9 | 122.1 | 122.9 | 123.4 | 123.1p | 124.0p | 121.7 |
| Soft drinks, mineral waters and other bottled waters | JU5C | 1107000000 | 114.0 | 115.3 | 115.0 | 115.4 | 115.0 | 115.0 | 114.3p | 114.8p | 113.4 |
| Tobacco products, including duty | K37Q | 7112120080 | 124.8 | 128.1 | 128.1 | 128.1 | 128.1 | 128.1 | 128.1p | 128.4p | 120.4 |
| Alcoholic beverages, including duty | K38U | 7113110180 | 124.6 | 127.9 | 129.6 | 128.4 | 127.6 | 127.7 | 127.8 | 128.0 | 122.2 |
| Textiles | K37R | 7112130000 | 108.6 | 108.8 | 109.1 | 109.2 | 109.4 | 109.5 | 109.4p | 109.8p | 107.5 |
| Wearing apparel | K37S | 7112140000 | 102.2 | 102.2 | 102.3 | 102.3 | 102.7 | 102.7 | 102.2p | 102.3p | 102.2 |
| Leather and related products | K37T | 7112150000 | 108.1 | 108.6 | 109.3 | 110.4 | 110.8 | 110.6 | 111.0p | 111.2p | 104.1 |
| Wood and products of wood and cork, except furniture | K37U | 7112160000 | 121.7 | 122.8 | 123.7 | 124.0 | 125.9 | 126.9 | 127.1p | 127.3p | 118.9 |
| Paper and paper products | K37V | 7112170000 | 110.9 | 112.2 | 113.4 | 114.1 | 115.3 | 116.4 | 116.9p | 117.4p | 109.6 |
| Printing and recording services | K37W | 7112180000 | 102.4 | 102.4 | 102.4 | 102.5 | 102.2 | 101.9 | 101.8 | 102.2 | 101.4 |
| Coke and refined petroleum products, including duty | K37Y | 7112190080 | 134.3 | 140.3 | 140.0 | 137.3 | 135.8 | 135.1 | 135.1p | 137.9p | 117.4 |
| Chemicals and chemical products | K37Z | 7112200000 | 129.4 | 131.5 | 132.7 | 131.7 | 132.9 | 133.4 | 134.0p | 136.1p | 125.0 |
| Basic pharmaceutical products and pharmaceutical preparations | K382 | 7112210000 | 110.9 | 111.0 | 110.6 | 113.4 | 112.7 | 112.7 | 112.9p | 112.5p | 108.2 |
| Rubber and plastic products | K383 | 7112220000 | 112.5 | 112.8 | 113.0 | 113.4 | 113.9 | 114.1 | 114.4p | 115.0p | 110.7 |
| Other non-metallic mineral products | K384 | 7112230000 | 120.0 | 120.4 | 120.3 | 120.3 | 120.2 | 120.3 | 120.3p | 120.5p | 118.9 |
| Basic metals | K385 | 7112240000 | 124.8 | 130.9 | 134.3 | 135.9 | 138.4 | 138.0 | 138.1p | 139.1p | 119.7 |
| Fabricated metal products, except machinery and equipment | K386 | 7112250000 | 115.0 | 115.4 | 116.8 | 116.8 | 117.2 | 117.7 | 118.2p | 118.3p | 113.4 |
| Computer, electronic and optical products | K387 | 7112260000 | 105.1 | 104.9 | 106.1 | 106.5 | 106.3 | 106.1 | 105.8p | 105.4p | 98.2 |
| Electrical equipment | K388 | 7112270000 | 119.1 | 120.3 | 120.9 | 122.2 | 121.8 | 121.5 | 122.5p | 122.4p | 115.5 |
| Machinery and equipment n.e.c. | K389 | 7112280000 | 114.8 | 114.3 | 114.7 | 114.6 | 114.8 | 114.6 | 114.9p | 115.5p | 113.1 |
| Motor vehicles, trailers and semi-trailers | K38A | 7112290000 | 111.6 | 111.4 | 111.0 | 111.0 | 111.1 | 110.9 | 111.2p | 112.1p | 109.7 |
| Other transport equipment | K38B | 7112300000 | 110.3 | 110.9 | 111.1 | 111.5 | 111.4 | 111.5 | 111.6p | 112.1p | 108.8 |
| Furniture | K38C | 7112310000 | 109.2 | 109.2 | 109.3 | 110.2 | 110.7 | 110.8 | 110.9p | 111.5p | 107.8 |
| Other manufactured goods | K38D | 7112320000 | 113.2 | 113.8 | 114.5 | 115.1 | 115.2 | 115.0 | 115.1p | 115.5p | 111.1 |
| Repair and installation services of machinery and equipment | K38E | 7112330000 | 111.7 | 111.6 | 112.1 | 112.1 | 112.1 | 111.5 | 111.5p | 111.6p | 109.2 |

1 Average index value for the calendar year January to December 2009.

Source: Office for National Statistics

p=provisional
r=revised

3 Price indices of materials and fuels purchased by Group - SIC 2007¹

Producer Prices Index: 2005=100, SIC2007

| | | | 2010 Mar | 2010 Apr | 2010 May | 2010 Jun | 2010 Jul | 2010 Aug | 2010 Sep | 2010 Oct | Annual Average ¹ 2009 |
|--|------|------------|-------------|-------------|-------------|-------------|-------------|-------------|-------------|-------------|--|
| Metal ores, other mining & quarrying | | | | | | | | | | | |
| Metal ores & other non-mining & quarrying products ² Group 07 | K5X5 | 6113070000 | 130.8 | 128.8 | 130.5 | 130.4 | 131.6 | 130.8 | 130.4p | 131.3p | 129.8 |
| Food products & beverages | | | | | | | | | | | |
| Preserved meat & meat products Group 09 | K5X9 | 6113090000 | 134.4 | 135.2 | 136.7 | 138.1 | 136.1 | 136.3 | 134.9p | 135.9p | 134.5 |
| Processed & preserved fruit & vegetables Group 11 | K5XD | 6113110000 | 125.7 | 125.8 | 135.7 | 142.4 | 131.6 | 131.7 | 129.0p | 128.7p | 124.1 |
| Vegetables & animal oils & fats Group 12 | K5XF | 6113120000 | 159.8 | 159.6 | 159.6 | 151.9 | 159.6 | 162.9 | 165.3p | 167.3p | 151.5 |
| Dairy products Group 13 | K5XH | 6113130000 | 130.5 | 128.1 | 128.9 | 129.4 | 130.6 | 131.9 | 133.0p | 133.7p | 128.3 |
| Grain mill products, starches & starch products Group 14 | K5XJ | 6113140000 | 133.6 | 133.3 | 137.2 | 132.8 | 132.4 | 139.0 | 142.2p | 146.8p | 132.7 |
| Bakery & other farinaceous products Group 15 | K5XL | 6113150000 | 125.3 | 124.8 | 125.6 | 124.5 | 125.6 | 126.2 | 126.7p | 128.5p | 124.7 |
| Sugar; cocoa, chocolate & sugar confectionery Group 16 | K5XN | 6113160000 | 115.0 | 114.9 | 115.5 | 115.4 | 115.9 | 116.0 | 115.8p | 116.8p | 114.0 |
| Processed tea & coffee; condiments & seasonings; prepared meals & dishes; homogenised food preparations Group 17 | K5XP | 6113170000 | 125.8 | 125.3 | 126.7 | 125.4 | 126.1 | 127.5 | 128.2p | 129.7p | 124.1 |
| Prepared animal feeds Group 18 | K5XR | 6113180000 | 133.3 | 132.8 | 135.4 | 137.4 | 136.5 | 139.6 | 141.0p | 144.1p | 133.9 |
| Distilled alcoholic beverages & malt Group 19 | K5XT | 6113190000 | 120.3 | 120.4 | 121.7 | 121.0 | 121.3 | 121.9 | 123.2p | 125.0p | 121.0 |
| Wine from grape; cider & other fruit wines; other non-distilled fermented beverages; beer Group 20 | K5XV | 6113200000 | 120.3 | 120.4 | 121.7 | 121.2 | 121.3 | 121.3 | 121.8p | 123.2p | 120.4 |
| Soft drinks; mineral waters & other bottled waters Group 21 | K5XX | 6113210000 | 119.5 | 119.8 | 120.4 | 120.1 | 120.3 | 120.2 | 120.4p | 121.2p | 116.8 |
| Tobacco products | | | | | | | | | | | |
| Tobacco products Group 22 | K5XZ | 6113220000 | 129.0 | 128.5 | 130.3 | 131.9 | 130.5 | 132.6 | 133.3p | 134.6p | 127.8 |
| Textiles | | | | | | | | | | | |
| Textile yarn & thread; woven textiles; textile finishing services Group 23 | K5Y3 | 6113230000 | 124.9 | 124.5 | 126.1 | 125.2 | 126.6 | 126.8 | 127.0p | 128.9p | 119.9 |
| Other textiles Group 24 | K5Y5 | 6113240000 | 116.8 | 116.6 | 117.5 | 117.1 | 117.9 | 117.9 | 118.1p | 119.2p | 113.4 |
| Wearing apparel | | | | | | | | | | | |
| Wearing apparel Group 25 | K5Y7 | 6113250000 | 112.5 | 112.2 | 112.7 | 112.6 | 112.9 | 112.8 | 113.0p | 113.7p | 110.2 |

1 Average index value for the calendar year January to December 2009.

Source: Office for National Statistics

2 The Climate Change Levy, introduced in April 2001, is not included in data shown in this table.

3 Indices include the Aggregates Levy, which was introduced in April 2002.

3 Price indices of materials and fuels purchased by Group - SIC 2007¹

continued

Producer Prices Index: 2005=100, SIC2007

| | | | 2010 Mar | 2010 Apr | 2010 May | 2010 Jun | 2010 Jul | 2010 Aug | 2010 Sep | 2010 Oct | Annual Average ¹ 2009 |
|---|------|------------|-------------|-------------|-------------|-------------|-------------|-------------|-------------|-------------|--|
| Leather & leather products | | | | | | | | | | | |
| Leather & related products Group 26 | K5Y9 | 6113260000 | 122.1 | 123.1 | 124.6 | 123.5 | 123.5 | 123.1 | 122.7p | 123.3p | 120.0 |
| Wood & wood products | | | | | | | | | | | |
| Wood & products of wood & cork, except furniture; articles of straw & plaiting materials Group 27 | K5YB | 6113270000 | 125.1 | 125.6 | 126.8 | 127.0 | 128.2 | 128.8 | 129.1p | 129.7p | 120.3 |
| Pulp, paper & paper products | | | | | | | | | | | |
| Pulp, paper & paperboard Group 28 | K5YD | 6113280000 | 127.0 | 125.6 | 128.2 | 128.6 | 130.3 | 130.4 | 130.7p | 132.3p | 124.1 |
| Articles of paper & paperboard Group 29 | K5YF | 6113290000 | 121.7 | 122.0 | 123.9 | 124.5 | 125.9 | 126.2 | 126.9p | 127.8p | 117.6 |
| Printing & recording | | | | | | | | | | | |
| Printing & recording services Group 30 | K5YH | 6113300000 | 112.5 | 112.6 | 113.3 | 113.6 | 114.0 | 114.0 | 114.2p | 114.9p | 110.1 |
| Coke, refined petroleum products & nuclear fuel | | | | | | | | | | | |
| Coke & refined petroleum products Group 31 | K5YJ | 6113310000 | 173.9 | 181.5 | 170.6 | 168.1 | 165.7 | 166.3 | 166.6p | 173.3p | 131.4 |
| Processed nuclear fuel Group 47 | K5ZH | 6113470000 | 173.3 | 180.8 | 170.1 | 167.6 | 165.2 | 165.8 | 166.2p | 172.8p | 131.3 |
| Chemicals & chemical products | | | | | | | | | | | |
| Industrial gases; other inorganic basic chemicals; fertilizers & nitrogen compounds Group 32 | K5YL | 6113320000 | 140.4 | 139.6 | 142.1 | 141.8 | 143.3 | 143.7 | 144.1p | 146.7p | 138.4 |
| Dyes & pigments; pesticides & other agrochemical products Group 33 | K5YN | 6113330000 | 140.3 | 140.5 | 142.9 | 142.1 | 143.8 | 144.4 | 144.9p | 147.5p | 136.4 |
| Other organic based chemicals; plastics in primary forms; synthetic rubber in primary forms; man made fibres Group 34 | K5YP | 6113340000 | 139.8 | 141.4 | 144.0 | 141.5 | 144.0 | 144.5 | 145.1p | 148.2p | 128.7 |
| Paints, varnishes & similar coatings, printing ink & mastics Group 35 | K5YR | 6113350000 | 134.7 | 136.1 | 137.6 | 136.4 | 138.0 | 138.8 | 139.5p | 141.8p | 129.3 |
| Soaps & detergents, cleaning & polishing preparations, perfumes & toilet preparations Group 36 | K5YT | 6113360000 | 122.2 | 122.7 | 123.5 | 123.1 | 124.0 | 124.2 | 124.6p | 125.9p | 118.7 |
| Other chemical products Group 37 | K5YV | 6113370000 | 133.2 | 134.3 | 135.7 | 134.2 | 135.4 | 136.0 | 136.7p | 138.8p | 126.9 |
| Basic pharmaceutical products & pharmaceutical preparations Group 38 | K5YX | 6113380000 | 116.2 | 116.3 | 116.7 | 117.7 | 117.5 | 117.9 | 117.7p | 118.2p | 113.7 |
| Rubber & plastic products | | | | | | | | | | | |
| Rubber products Group 39 | K5YZ | 6113390000 | 124.7 | 124.6 | 125.7 | 125.4 | 126.0 | 126.3 | 126.6p | 128.2p | 120.9 |
| Plastic products Group 40 | K5Z3 | 6113400000 | 130.1 | 131.1 | 132.7 | 131.2 | 132.7 | 133.0 | 133.4p | 135.3p | 121.8 |

1 Average index value for the calendar year January to December 2009.

Source: Office for National Statistics

2 The Climate Change Levy, introduced in April 2001, is not included in data shown in this table.

3 Price indices of materials and fuels purchased by Group - SIC 2007¹

continued

Producer Prices Index: 2005=100, SIC2007

| | | | 2010 Mar | 2010 Apr | 2010 May | 2010 Jun | 2010 Jul | 2010 Aug | 2010 Sep | 2010 Oct | Annual Average ¹ 2009 |
|--|------|------------|-------------|-------------|-------------|-------------|-------------|-------------|-------------|-------------|--|
| Non-metallic mineral products | | | | | | | | | | | |
| Glass & glass products Group 41 | K5Z5 | 6113410000 | 128.8 | 126.8 | 128.9 | 128.5 | 129.7 | 129.8 | 129.5p | 131.1p | 125.3 |
| Refractory products; clay building materials; other porcelain & ceramic products Group 42 | K5Z7 | 6113420000 | 127.5 | 124.4 | 127.2 | 127.2 | 128.7 | 128.0 | 127.4p | 129.0p | 126.4 |
| Cement, lime & Plaster; articles of concrete, cement & plaster Group 43 | K5Z9 | 6113430000 | 129.7 | 127.4 | 129.4 | 129.1 | 130.4 | 129.4 | 129.9p | 130.8p | 128.7 |
| Cut, shaped & finished stone; other non-metallic mineral products Group 44 | K5ZB | 6113440000 | 127.7 | 126.9 | 128.6 | 128.3 | 129.4 | 129.0 | 129.0p | 130.1p | 125.4 |
| Basic metals | | | | | | | | | | | |
| Basic iron & steel & ferro-alloys; tubes pipes, hollow profiles & related fittings, of steel; cold rolled Group 45 | K5ZD | 6113450000 | 126.5 | 130.2 | 132.8 | 132.8 | 134.9 | 134.3 | 134.4p | 135.4p | 121.3 |
| Cold formed or folded products; cold drawn wire; precious metals; aluminium; lead, zinc & tin; copper; Group 46 | K5ZF | 6113460000 | 137.3 | 137.7 | 139.7 | 138.8 | 138.5 | 138.6 | 139.8p | 141.9p | 130.2 |
| Fabricated metal products, except machinery and equipment | | | | | | | | | | | |
| Structural metal products Group 48 | K5ZJ | 6113480000 | 126.1 | 130.8 | 133.3 | 133.6 | 135.7 | 135.3 | 135.7p | 136.6p | 120.4 |
| Tanks, reservoirs & other containers of metal; steam generators, except central heating hot water boilers Group 49 | K5ZL | 6113490000 | 124.5 | 125.8 | 127.2 | 126.2 | 127.0 | 126.8 | 127.0p | 127.9p | 120.1 |
| Forging, pressing stamping & roll forming services of metal; powder metallurgy; treatment & coating Group 51 | K5ZP | 6113510000 | 130.2 | 133.5 | 135.7 | 135.4 | 136.6 | 136.4 | 137.1p | 138.6p | 123.3 |
| Cutlery, tools & general hardware Group 52 | K5ZR | 6113520000 | 127.0 | 129.8 | 131.8 | 131.6 | 132.7 | 132.5 | 133.2p | 134.5p | 121.1 |
| Other fabricated metal products Group 53 | K5ZT | 6113530000 | 129.6 | 134.4 | 137.1 | 137.0 | 138.7 | 138.4 | 139.2p | 140.6p | 122.9 |
| Machinery and equipment n.e.c | | | | | | | | | | | |
| Weapons & ammunition Group 50 | K5ZN | 6113500000 | 119.3 | 119.5 | 120.1 | 119.7 | 119.8 | 120.0 | 120.3 | 121.1 | 116.4 |
| Domestic appliances Group 64 | K62H | 6113640000 | 123.1 | 124.8 | 126.3 | 126.0 | 126.6 | 126.3 | 126.8p | 127.8p | 117.6 |
| General purpose machinery Group 65 | K62J | 6113650000 | 124.7 | 126.2 | 127.5 | 127.2 | 127.3 | 127.3 | 128.0p | 129.2p | 119.2 |
| Other general purpose machinery Group 66 | K62L | 6113660000 | 122.8 | 124.6 | 126.2 | 126.4 | 127.0 | 126.6 | 127.0p | 128.2p | 118.1 |
| Agricultural & forestry machinery Group 67 | K62N | 6113670000 | 119.5 | 119.8 | 120.4 | 120.6 | 120.6 | 120.3 | 120.8p | 121.6p | 116.1 |
| Metal forming machinery & machine tools Group 68 | K62P | 6113680000 | 122.9 | 124.3 | 125.6 | 125.6 | 126.3 | 125.9 | 126.2p | 127.1p | 118.7 |
| Other special purpose machinery Group 69 | K62R | 6113690000 | 119.2 | 120.8 | 122.3 | 122.6 | 123.8 | 123.4 | 123.6p | 124.3p | 116.2 |
| Military fighting vehicles Group 76 | K637 | 6113760000 | 119.3 | 119.5 | 120.1 | 119.7 | 119.8 | 120.0 | 120.3p | 121.1p | 116.4 |
| Repair services of fabricated metal services; repair services of machinery; repair services of electrical Group 83 | K63L | 6113830000 | 120.1 | 121.1 | 122.2 | 122.3 | 122.8 | 122.2 | 122.6p | 123.3p | 116.5 |
| Installation services of industrial machinery & equipment Group 87 | K63T | 6113870000 | 119.6 | 121.3 | 122.7 | 123.0 | 124.1 | 123.7 | 123.9p | 124.6p | 116.5 |

1 Average index value for the calendar year January to December 2009.

Source: Office for National Statistics

2 The Climate Change Levy, introduced in April 2001, is not included in data shown in this table.

3 Price indices of materials and fuels purchased by Group - SIC 2007¹

continued

Producer Prices Index: 2005=100, SIC2007

| | | | 2010 Mar | 2010 Apr | 2010 May | 2010 Jun | 2010 Jul | 2010 Aug | 2010 Sep | 2010 Oct | Annual Average ¹ 2009 |
|--|------|------------|-------------|-------------|-------------|-------------|-------------|-------------|-------------|-------------|--|
| Computers & peripheral equipment | | | | | | | | | | | |
| Computers & peripheral equipment Group 55 | K5ZX | 6113550000 | 114.1 | 114.4 | 115.9 | 116.6 | 116.4 | 115.3 | 115.3p | 115.5p | 106.7 |
| Radio, television & communication equipment & apparatus | | | | | | | | | | | |
| Electronic components & boards Group 54 | K5ZV | 6113540000 | 114.4 | 114.8 | 115.2 | 115.7 | 116.2 | 114.6 | 114.7 | 115.1 | 113.3 |
| Communication equipment Group 56 | K5ZZ | 6113560000 | 112.7 | 112.8 | 113.4 | 113.8 | 113.9 | 112.8 | 112.9p | 112.8p | 111.3 |
| Consumer electronics Group 57 | K623 | 6113570000 | 114.7 | 114.8 | 115.7 | 115.7 | 115.6 | 115.3 | 115.5p | 115.5p | 112.1 |
| Medical, precision & optical instruments, watches & clocks | | | | | | | | | | | |
| Measuring, testing & navigating equipment; watches & clocks Group 58 | K625 | 6113580000 | 116.0 | 116.3 | 116.8 | 117.4 | 118.0 | 116.6 | 116.8 | 117.2 | 114.0 |
| Irridation electromedical & electrotherapeutic equipment Group 59 | K627 | 6113590000 | 117.1 | 117.3 | 118.2 | 118.2 | 118.3 | 118.1 | 118.3p | 118.8p | 113.9 |
| Optical instruments & photographic equipment; magnetic & optical media Group 60 | K629 | 6113600000 | 116.0 | 116.3 | 116.8 | 117.4 | 118.0 | 116.6 | 116.8p | 117.2p | 114.0 |
| Medical & dental instruments & supplies Group 81 | K63H | 6113810000 | 116.0 | 116.3 | 116.8 | 117.4 | 118.0 | 116.6 | 116.8p | 117.2p | 114.0 |
| Electrical machinery & apparatus n.e.c | | | | | | | | | | | |
| Electric motors, generators, transformers & electricity distribution & control apparatus; Group 61 | K62B | 6113610000 | 119.1 | 119.6 | 120.4 | 120.8 | 121.2 | 120.4 | 120.8p | 121.5p | 116.1 |
| Wiring & wiring devices Group 62 | K62D | 6113620000 | 136.2 | 138.7 | 140.2 | 139.8 | 139.1 | 139.4 | 141.5p | 143.7p | 126.5 |
| Electrical lighting equipment; other electrical equipment Group 63 | K62F | 6113630000 | 117.7 | 118.2 | 119.1 | 119.3 | 119.5 | 118.7 | 119.0p | 119.4p | 114.9 |
| Transport equipment | | | | | | | | | | | |
| Motor vehicles Group 70 | K62T | 6113700000 | 120.2 | 120.5 | 121.1 | 121.2 | 121.2 | 120.9 | 121.4p | 122.4p | 116.2 |
| Bodies (coachwork) for motor vehicles; trailers & semi trailers Group 71 | K62V | 6113710000 | 120.2 | 120.5 | 121.1 | 121.2 | 121.2 | 120.9 | 121.4p | 122.4p | 116.2 |
| Parts & accessories for motor vehicles Group 72 | K62X | 6113720000 | 120.2 | 120.5 | 121.1 | 121.2 | 121.2 | 120.9 | 121.4p | 122.4p | 116.2 |
| Ships & boats Group 73 | K62Z | 6113730000 | 121.6 | 122.0 | 123.0 | 122.9 | 123.5 | 123.3 | 123.5p | 124.3p | 118.1 |
| Repair & maintenance services of ships & boats Group 84 | K63N | 6113840000 | 121.6 | 122.0 | 123.0 | 122.9 | 123.5 | 123.3 | 123.5p | 124.3p | 118.1 |
| Other transport equipment | | | | | | | | | | | |
| Railway locomotives & rolling stock Group 74 | K633 | 6113740000 | 123.5 | 123.7 | 124.8 | 124.6 | 124.9 | 123.4 | 123.5p | 123.9p | 114.5 |
| Air and spacecraft & related machinery Group 75 | K635 | 6113750000 | 122.4 | 123.3 | 124.8 | 124.2 | 123.3 | 123.5 | 123.9 | 124.5 | 116.8 |
| Transport equipment n.e.c. Group 77 | K639 | 6113770000 | 123.5 | 123.7 | 124.8 | 124.6 | 124.9 | 123.4 | 123.5p | 123.9p | 114.5 |
| Repair & maintenance services of aircraft & spacecraft Group 85 | K63P | 6113850000 | 122.4 | 123.3 | 124.8 | 124.2 | 123.3 | 123.5 | 123.9p | 124.5p | 116.8 |
| Repair & maintenance service of other transport equipment Group 86 | K63R | 6113860000 | 123.5 | 123.7 | 124.8 | 124.6 | 124.9 | 123.4 | 123.5p | 123.9p | 114.5 |

1 Average index value for the calendar year January to December 2009.

Source: Office for National Statistics

2 The Climate Change Levy, introduced in April 2001, is not included in data shown in this table.

3 Price indices of materials and fuels purchased by Group - SIC 2007¹

continued

Producer Prices Index: 2005=100, SIC2007

| | | | 2010 Mar | 2010 Apr | 2010 May | 2010 Jun | 2010 Jul | 2010 Aug | 2010 Sep | 2010 Oct | Annual Average ¹ 2009 |
|--|------|------------|-------------|-------------|-------------|-------------|-------------|-------------|-------------|-------------|--|
| Furniture; manufacturing n.e.c | | | | | | | | | | | |
| Furniture Group 78 | К63В | 6113780000 | 121.3 | 122.8 | 124.0 | 124.2 | 125.3 | 125.4 | 125.8p | 126.6p | 116.7 |
| Jewellery, bijouterie & related articles, musical instruments Group 79 | К63Д | 6113790000 | 139.2 | 141.9 | 143.7 | 142.8 | 141.5 | 141.8 | 143.8p | 146.5p | 128.4 |
| Sports goods, games & toys Group 80 | К63Е | 6113800000 | 121.5 | 122.7 | 123.7 | 123.9 | 124.8 | 124.4 | 124.8p | 125.8p | 117.6 |
| Manufactured goods n.e.c Group 82 | К63Ж | 6113820000 | 122.2 | 122.6 | 124.1 | 123.5 | 124.1 | 124.2 | 124.7p | 126.1p | 117.5 |

1 Average index value for the calendar year January to December 2009.

Source: Office for National Statistics

2 The Climate Change Levy, introduced in April 2001, is not included in data shown in this table

4 Price indices of products manufactured in the United Kingdom (SIC07)

Producer Prices Index: 2005=100, SIC2007

| | | | 2010 Mar | 2010 Apr | 2010 May | 2010 Jun | 2010 Jul | 2010 Aug | 2010 Sep | 2010 Oct | Annual Average ¹ 2009 |
|--|------|------------|-------------|-------------|-------------|-------------|-------------|-------------|-------------|-------------|--|
| Other mining & quarrying products | | | | | | | | | | | |
| Ornamental & building stone, limestone, gypsum, chalk and slate excluding aggregate levy | JTU9 | 0811000000 | 108.5B | 105.9B | 104.8B | 107.7B | 105.3B | 105.9B | 105.2p | 105.2pB | 113.1 |
| Ornamental & building stone, limestone, gypsum, chalk and slate including aggregate levy | K2V8 | 0811008000 | 109.8B | 107.3B | 106.4B | 108.7B | 106.7B | 107.2B | 106.7p | 106.7pB | 113.9 |
| Granite, sandstone & other ornamental or building stone excluding aggregate levy | K2V9 | 0811120000 | 108.5 | 108.5 | 108.5 | 108.5 | 107.7 | 107.9 | 107.9p | 107.9p | .. |
| Limestone & gypsum, excluding aggregate levy | JTV3 | 0811200000 | 106.9B | 108.0B | 105.3B | 112.5B | 106.9B | 108.4B | 106.7p | 106.7pB | 118.1 |
| Limestone & gypsum, including aggregate levy | JTV4 | 0811208000 | 110.3 | 111.2 | 109.0 | 114.7 | 110.3 | 111.5 | 110.1p | 110.1p | 119.8 |
| Gravel, sand, clays & kaolin, excluding aggregate levy | JTV8 | 0812000000 | 117.3 | 116.8 | 117.1 | 117.2 | 123.0 | 126.9 | 125.1p | 125.1p | 115.3 |
| Gravel, sand, clays & kaolin, including aggregate levy | JTV9 | 0812008000 | 119.1 | 116.3 | 118.9 | 118.8 | 123.9 | 126.3 | 124.7p | 124.7p | 117.2 |
| Natural sands, excluding aggregate levy | JTW2 | 0812110000 | 132.4 | 134.6 | 133.0 | 134.7 | 132.1 | 129.9 | 129.6p | 129.6p | 123.4 |
| Granules, chippings and powder; excluding aggregate levy | JTW4 | 0812120000 | 112.9 | 111.7 | 112.2 | 111.8 | 120.8 | 126.9 | 124.5p | 124.5p | 112.4 |
| Granules, chippings and powder; including aggregate levy | K2VA | 0812128000 | 116.3 | 111.9 | 115.7 | 115.1 | 122.9 | 126.9 | 124.7p | 124.7p | 115.5 |
| Other mining and quarrying products nec | JTX3 | 0899000000 | 122.8B | 122.8B | 122.7B | 125.3B | 125.3B | 125.4B | 126.2p | 126.2pB | .. |
| Food products, soft drinks, mineral waters & other bottled waters | | | | | | | | | | | |
| Soft drinks; mineral waters & other bottled waters | JU5C | 1107000000 | 114.0 | 115.3 | 115.0 | 115.4 | 115.0 | 115.0 | 114.3p | 114.8p | 113.4 |
| Processed & preserved meat | JTX6 | 1011000000 | 130.9B | 135.2B | 136.8B | 130.1B | 135.1B | 134.2B | 129.0p | 132.7pB | .. |
| Meat of bovine animals, fresh or chilled | K2VB | 1011110000 | 136.0F | 143.6F | 146.9F | 133.3 | 145.7 | 145.7 | 135.0p | 143.6p | .. |
| Meat of swine, fresh or chilled | JTX7 | 1011120000 | 123.8 | 124.7 | 124.7 | 125.6 | 125.7 | 125.4 | 125.3p | 124.3p | .. |
| Meat of sheep, fresh or chilled | JTX8 | 1011130000 | 127.2F | 127.2F | 126.8F | 126.5 | 117.9 | 111.4 | 113.8p | 110.7p | .. |
| Edible offal of bovine, swine, sheep, goat, horses and other equines, fresh or chilled | JTX9 | 1011200000 | 114.9F | 113.0F | 112.3F | 109.6B | 108.7B | 108.6B | 109.3p | 108.4pB | 111.2 |
| Other raw hides & skins of bovine or equine animals | K5UR | 1011430000 | – | – | 96.0 | 97.8 | 97.4 | 96.2 | 95.9p | 94.5p | .. |
| Raw hides & skins of sheep or lambs | JTY4 | 1011440000 | .. | .. | .. | 205.7B | 230.4B | 231.7B | 232.7p | 230.0pB | .. |
| Raw offal, inedible | K2VE | 1011600000 | .. | .. | .. | 208.3 | 212.3 | 212.5 | 212.4p | 216.0p | .. |
| Processed & preserved poultry meat | K2VF | 1012000000 | 117.3 | 117.9 | 119.1 | 117.3 | 117.7 | 118.5 | 118.3p | 120.5p | .. |
| Meat of poultry, fresh or chilled | JTY6 | 1012100000 | 114.7 | 115.4 | 116.6 | 114.8 | 115.1 | 116.0 | 115.8p | 118.0p | 118.4 |
| Meat of poultry, frozen | JTY7 | 1012200000 | .. | .. | .. | 163.6 | 164.3 | 164.3 | 164.3p | 164.3p | .. |
| Meat & poultry meat products | JTY9 | 1013000000 | 121.8 | 121.8 | 121.7 | 122.4 | 122.0 | 122.0 | 121.4p | 121.5p | 121.6 |
| Swine meat, cuts, salted, dried or smoked | JTZ2 | 1013110000 | 119.4 | 119.4 | 120.0 | 121.1 | 120.5 | 120.6 | 120.6p | 120.4p | 119.9 |
| Sausages & similar products of meat | JTZ5 | 1013140000 | 121.9 | 121.8 | 121.6 | 121.6 | 121.8 | 121.5 | 120.7p | 122.1p | 122.1 |
| Other prepared & preserved meat | JTZ6 | 1013150000 | 122.0 | 122.0 | 121.4 | 122.0 | 121.6 | 121.6 | 120.7p | 120.9p | 121.8 |
| Processed & preserved fish, crustaceans & molluscs | JTZ8 | 1020000000 | 125.6 | 125.6 | 125.8 | 125.1 | 124.6 | 125.8 | 125.2p | 127.8p | 127.5 |
| Fish, including fillets smoked | JU24 | 1020240000 | 108.3F | 108.3F | 108.7F | 105.7 | 106.1 | 106.1 | 106.1p | 109.9p | 111.0 |
| Fish, otherwise prepared or preserved | JU25 | 1020250000 | 115.2F | 115.2F | 115.2F | 114.7 | 114.6 | 114.6 | 114.7p | 114.7p | 115.6 |
| Crustaceans, otherwise prepared or preserved | JU27 | 1020340000 | .. | .. | .. | 120.7 | 120.0 | 121.2 | 121.2p | 122.3p | .. |
| Processed & preserved potatoes | JU2A | 1031000000 | 133.9 | 133.9 | 134.1 | 134.1 | 134.2 | 134.2 | 134.0p | 133.5p | 129.7 |
| Dried potatoes in the form of flour, meal, flakes, granulates and pellets | JU2C | 1031130000 | .. | .. | .. | 158.5 | 158.5 | 158.5 | 158.5p | 158.5p | .. |
| Potatoes prepared or preserved | JU2D | 1031140000 | 135.0 | 135.1 | 135.3 | 135.3 | 135.4 | 135.4 | 135.4p | 134.9p | 130.4 |
| Fruit & vegetable juices | K2VJ | 1032000000 | 117.1 | 118.1 | 118.1 | 117.2 | 117.3 | 117.3 | 118.0p | 118.5p | 115.7 |
| Orange juice | JU2F | 1032120000 | 122.8 | 123.1 | 123.2 | 120.8 | 120.8 | 120.8 | 122.7p | 123.8p | 120.0 |

For B and F see notes

4 Price indices of products manufactured in the United Kingdom (SIC07)

continued

Producer Prices Index: 2005=100, SIC2007

| | | | 2010 Mar | 2010 Apr | 2010 May | 2010 Jun | 2010 Jul | 2010 Aug | 2010 Sep | 2010 Oct | Annual Average ¹ 2009 |
|--|------|------------|-------------|-------------|-------------|-------------|-------------|-------------|-------------|-------------|--|
| Processed & preserved fruit & vegetables | JU2K | 1039000000 | 115.0 | 115.9 | 116.5 | 115.7 | 115.3 | 115.4 | 115.5p | 116.0p | 114.1 |
| Vegetables, frozen | JU2L | 1039110000 | 113.0F | 118.2F | 119.7F | 113.1 | 119.5 | 119.7 | 116.1p | 116.7p | 116.3 |
| Cut & packaged vegetables & fruits | JU2N | 1039140000 | 112.2 | 109.1 | 111.0 | 108.9 | 104.3 | 107.1 | 106.5p | 108.4p | 108.5 |
| Other vegetables (except potatoes), preserved otherwise than by vinegar or acetic acid | JU2Q | 1039170000 | 98.6 | 99.8 | 101.1 | 100.4 | 101.1 | 100.5 | 101.1p | 101.4p | 98.4 |
| Vegetables (except potatoes), fruit, nuts & other edible parts of plants | JU2R | 1039180000 | 100.8F | 108.2F | 108.2F | 108.2 | 108.2 | 108.2 | 108.2p | 108.2p | 107.3 |
| Jams, fruit jellies & fruit or nut purees & pastes | K2VL | 1039220000 | 110.5F | 110.5F | 110.5F | 110.5 | 110.5 | 110.5 | 110.5p | 110.7p | 109.6 |
| Nuts, groundnuts, roasted, salted or otherwise prepared | JU2T | 1039230000 | 141.0F | 141.0F | 141.0F | 141.0 | 140.2 | 139.1 | 140.0p | 140.0p | 140.4 |
| Fruit & nuts provisionally preserved, not for immediate consumption | JU2U | 1039240000 | .. | .. | .. | 108.9 | 108.4 | 107.8 | 109.0p | 108.5p | .. |
| Other prepared or preserved fruits | K2VM | 1039250000 | 102.6 | 103.0 | 104.2 | 103.3 | 102.8 | 102.0 | 103.0p | 103.1p | 107.8 |
| Dairy & cheese products | JU37 | 1051000000 | 123.7 | 123.6 | 125.3 | 126.7 | 124.2 | 126.5 | 125.7p | 124.8p | 121.3 |
| Processed liquid milk | K2VR | 1051110000 | 129.7 | 129.0 | 129.2 | 128.9 | 128.2 | 128.9 | 128.9p | 131.9p | 131.6 |
| Milk & cream of > 6% fat, not concentrated or sweetened | JU38 | 1051120000 | 112.5 | 114.7 | 115.4 | 116.3 | 117.1 | 121.5 | 121.5p | 121.8p | 111.7 |
| Butter & dairy spreads | JU3B | 1051300000 | 107.6 | 109.5 | 117.9 | 122.0 | 120.3 | 119.7 | 118.8p | 120.0p | .. |
| Cheese & curd | K2VS | 1051400000 | 120.7 | 120.9 | 121.1 | 124.9 | 122.5 | 122.6 | 122.5p | 122.2p | 119.1 |
| Yoghurt & other fermented or acidified milk or cream | JU3D | 1051520000 | .. | .. | .. | 121.9 | 108.9 | 129.0 | 129.0p | 106.1p | .. |
| Whey | JU3F | 1051550000 | 111.8 | 108.5 | 111.1 | 114.1 | 109.9 | 108.1 | 110.7p | 108.0p | 80.5 |
| Ice cream | JU3G | 1052000000 | 120.3 | 120.3 | 116.0 | 115.2 | 122.9 | 123.0 | 112.4p | 112.5p | 118.2 |
| Ice cream & other edible ice | JU3H | 1052100000 | 120.3 | 120.3 | 116.0 | 115.2 | 122.9 | 123.0 | 112.4p | 112.5p | 118.2 |
| Grain mill products | JU3I | 1061000000 | 122.4 | 122.3 | 122.9 | 123.0 | 122.9 | 122.3 | 124.5p | 126.1p | 129.2 |
| Rice, semi or wholly milled or broken | JU3K | 1061120000 | 121.2F | 121.2F | 121.5F | 122.0 | 122.2 | 122.2 | 122.2p | 122.2p | 124.2 |
| Wheat or maslin flour | JU3L | 1061210000 | 132.7 | 132.4 | 132.5 | 132.6 | 132.3 | 133.0 | 138.4p | 141.3p | 146.9 |
| Mixes for preparation of bakers' wares | K2VU | 1061240000 | 111.0F | 111.0F | 114.6F | 114.7 | 114.6 | 104.7 | 105.2p | 105.2p | 113.3 |
| Breakfast cereals & other cereal grain products | K2VV | 1061330000 | 117.0 | 117.1 | 117.4 | 117.4 | 117.4 | 117.4 | 117.5p | 117.5p | 118.4 |
| Bran, sharps & other residues from the working of cereals | JU3P | 1061400000 | .. | .. | .. | 86.5 | 86.7 | 86.6 | 88.7p | 103.1p | .. |
| Starches & starch products | JU3Q | 1062000000 | 97.5F | 99.6F | 100.4F | 95.5 | 94.7 | 100.4 | 100.3p | 124.4p | 102.7 |
| Glucose & glucose syrup; fructose syrup, invert sugar | JU3R | 1062130000 | .. | .. | .. | 94.4 | 94.2 | 94.0 | 93.8p | 94.2p | .. |
| Bread; fresh pastry goods & cakes | JU3T | 1071000000 | 122.6 | 121.7 | 122.1 | 122.1 | 122.6 | 122.7 | 123.3p | 123.2p | 122.9 |
| Fresh bread | JU3U | 1071110000 | 134.9 | 133.4 | 134.2 | 134.4 | 135.1 | 135.3 | 136.4p | 136.0p | 135.9 |
| Fresh pastry goods & cakes | JU3V | 1071120000 | 111.5 | 111.2 | 111.3 | 111.1 | 111.4 | 111.5 | 111.5p | 111.7p | 111.2 |
| Rusks & biscuits; preserved pastry goods & cakes | K2VX | 1072000000 | .. | .. | 113.1 | 113.8 | 114.6 | 114.0 | 114.1p | 114.1p | .. |
| Crispbread, rusks, toasted bread & similar | JU3W | 1072110000 | .. | .. | .. | 77.7 | 77.7 | 77.7 | 77.9p | 77.9p | .. |
| Gingerbread and the like; sweet biscuits, waffles and wafers | JU3X | 1072120000 | 120.4 | 123.2 | 123.6 | 124.1 | 124.1 | 122.9 | 123.3p | 123.2p | 117.8 |
| Other dry or preserved bakers' wares | K2VY | 1072190000 | 107.2 | 106.4 | 106.0 | 107.0 | 108.6 | 108.5 | 108.4p | 108.4p | 106.5 |
| Macaroni, noodles, couscous & similar products | JU3Y | 1073000000 | .. | .. | .. | 115.8B | 115.7B | 115.7B | 115.7pB | 115.7pB | .. |
| Cocoa, chocolate & sugar confectionery | JU47 | 1082000000 | 120.7 | 121.6 | 121.8 | 121.7 | 121.7 | 121.8 | 121.4p | 122.8p | 116.6 |
| Chocolate & food preparations containing cocoa | JU4B | 1082220000 | 120.3 | 121.8 | 121.8 | 122.0 | 122.1 | 122.4 | 122.4p | 124.4p | 116.3 |
| Sugar confectionery (inc white chocolate), not containing cocoa | K2W2 | 1082230000 | 116.1 | 116.1 | 115.9 | 115.9 | 116.1 | 116.1 | 116.0p | 116.5p | 114.1 |

For B and F see notes

4 Price indices of products manufactured in the United Kingdom (SIC07)

continued

Producer Prices Index: 2005=100, SIC2007

| | | | 2010 Mar | 2010 Apr | 2010 May | 2010 Jun | 2010 Jul | 2010 Aug | 2010 Sep | 2010 Oct | Annual Average ¹ 2009 |
|--|------|------------|-------------|-------------|-------------|-------------|-------------|-------------|-------------|-------------|--|
| Processed tea & coffee | JU4D | 1083000000 | 128.3 | 128.6 | 129.1 | 128.8 | 128.8 | 128.4 | 128.5p | 129.1p | 124.6 |
| Coffee, decaffeinated or roasted | JU4E | 1083110000 | 113.6 | 115.1 | 115.1 | 115.1 | 115.1 | 115.1 | 115.1p | 115.1p | 112.7 |
| Green tea (not fermented), black tea (fermented) in immediate packings of a content upto & including 3kg | K2W3 | 1083130000 | 151.8 | 152.1 | 153.2 | 154.5 | 154.3 | 153.5 | 153.6p | 155.0p | 142.5 |
| Condiments & seasonings | K2W4 | 1084000000 | 104.7 | 107.7 | 107.7 | 107.7 | 107.7 | 107.6 | 107.7p | 107.4p | 106.7 |
| Sauces; mixed condiments & mixed seasonings, mustard flour | JU4I | 1084120000 | 101.3 | 104.7 | 104.7 | 104.7 | 104.7 | 104.7 | 104.8p | 104.5p | 102.8 |
| Prepared meals & dishes | JU4K | 1085000000 | 110.0 | 109.4 | 110.0 | 109.8 | 109.8 | 110.0 | 109.7p | 109.8p | 109.7 |
| Prepared meals & dishes based on meat, meat offal or blood | JU4L | 1085110000 | 108.7 | 107.9 | 108.8 | 108.8 | 108.4 | 109.2 | 108.5p | 109.2p | 109.1 |
| Prepared meals & dishes based on fish, crustaceans & molluscs | JU4M | 1085120000 | 117.3 | 117.9 | 118.3 | 116.4 | 117.9 | 113.2 | 113.5p | 110.0p | 112.2 |
| Prepared meals & dishes based on vegetables | JU4N | 1085130000 | 111.7 | 111.0 | 111.0 | 110.9 | 110.5 | 109.6 | 110.0p | 109.9p | 111.0 |
| Prepared meals & dishes based on pasta | K2W5 | 1085140000 | 107.4 | 106.9 | 107.2 | 107.1 | 108.9 | 108.9 | 108.9p | 108.8p | 106.8 |
| Other prepared dishes & meals (inc frozen pizza) | JU4O | 1085190000 | 111.2 | 110.9 | 111.0 | 110.9 | 110.9 | 111.9 | 112.0p | 112.0p | 111.5 |
| Other food products nec | JU4Q | 1089000000 | 119.2 | 118.7 | 118.5 | 119.0 | 119.2 | 119.2 | 119.2p | 119.3p | 114.4 |
| Soups & broths & preparations thereof | JU4R | 1089110000 | 113.8 | 113.0 | 112.5 | 112.5 | 112.5 | 112.5 | 112.6p | 112.8p | 112.4 |
| Miscellaneous food products nec | JU4U | 1089190000 | 119.0 | 118.6 | 118.5 | 119.0 | 119.3 | 119.3 | 119.3p | 119.3p | 112.8 |
| Prepared feeds for farm animals | JU4V | 1091000000 | 135.0 | 135.0 | 133.8 | 135.0 | 134.9 | 136.7 | 140.8p | 144.1p | 138.2 |
| Prepared pet foods | JU4X | 1092000000 | 127.0 | 126.9 | 127.2 | 127.1 | 127.5 | 127.6 | 127.6p | 128.1p | 124.5 |
| Beverages | | | | | | | | | | | |
| Distilled alcoholic beverages, excluding duty | JU4Y | 1101000000 | 122.2F | 122.4F | 122.4F | 121.3F | 121.3F | 121.3F | 121.3pF | 121.3pF | .. |
| Distilled alcoholic beverages, including duty | JU4Z | 1101008000 | .. | .. | .. | 118.2F | 118.2F | 118.2F | 118.2pF | 118.2pF | .. |
| Cider & other fruit wines, excluding duty | JU53 | 1103000000 | 113.6 | 114.1 | 114.8 | 114.8 | 115.4 | 115.7 | 116.1p | 116.3p | .. |
| Other fermented beverages (e.g cider, perry, mead), excluding duty | JU55 | 1103100000 | 113.6 | 114.1 | 114.8 | 114.8 | 115.4 | 115.7 | 116.1p | 116.3p | .. |
| Cider and other fruit wines, including duty | JU54 | 1103008000 | .. | .. | .. | 120.0 | 117.7 | 117.9 | 118.2p | 118.1p | .. |
| Other fermented beverages (e.g cider, perry, mead), including duty | K2W9 | 1103108000 | .. | .. | .. | 120.0 | 117.7 | 117.9 | 118.2p | 118.1p | .. |
| Beer, excluding duty | JU56 | 1105000000 | 110.7 | 112.8 | 115.8 | 115.5 | 114.4 | 114.4 | 114.2p | 114.3p | 110.5 |
| Beer except dregs from brewing, excluding duty | JU58 | 1105100000 | .. | .. | .. | 115.7 | 114.6 | 114.6 | 114.4p | 114.4p | .. |
| Brewing or distilling of dregs, excluding duty | JU5A | 1105200000 | .. | .. | .. | 88.8B | 88.8B | 88.8B | 88.8pB | 99.5pB | .. |
| Beer, including duty | JU57 | 1105008000 | 125.5 | 128.8 | 130.8 | 129.4 | 128.7 | 128.7 | 128.5p | 128.6p | 122.0 |
| Beer, except dregs from brewing, including duty | JU59 | 1105108000 | 125.5 | 128.8 | 130.8 | 129.4 | 128.7 | 128.7 | 128.5p | 128.6p | 122.0 |
| Malt | K2WA | 1106000000 | .. | .. | 144.7 | 146.5 | 145.7 | 148.7 | 155.5p | 161.7p | .. |
| Tobacco products | | | | | | | | | | | |
| Tobacco products, excluding duty | JU5F | 1200000000 | 151.3F | 151.5F | 151.5F | 151.5 | 151.5 | 151.5 | 151.5p | 158.7p | 141.5 |
| Tobacco products, including duty | K2WB | 1200008000 | 124.8F | 128.1F | 128.1F | 128.1F | 128.1F | 128.1F | 128.1pF | 128.4pF | 120.4 |
| Woven textiles | | | | | | | | | | | |
| Woven textiles | JU5Q | 1320000000 | 103.4F | 103.1F | 104.6F | 102.8F | 102.8F | 102.5F | 100.6pF | 101.7pF | 105.4 |
| Textile finishing services | K2WF | 1330000000 | 108.3 | 108.3 | 107.7 | 109.9 | 109.9 | 109.9 | 109.9p | 110.1p | 106.8 |

For B and F see notes

4 Price indices of products manufactured in the United Kingdom (SIC07)

continued

Producer Prices Index: 2005=100, SIC2007

| | | | 2010 Mar | 2010 Apr | 2010 May | 2010 Jun | 2010 Jul | 2010 Aug | 2010 Sep | 2010 Oct | Annual Average ¹ 2009 |
|--|------|------------|-------------|-------------|-------------|-------------|-------------|-------------|-------------|-------------|--|
| Made-up textile articles, except apparel | JU64 | 1392000000 | 110.1 | 110.4 | 110.7 | 110.8 | 111.3 | 111.3 | 111.1p | 111.5p | 108.4 |
| Curtains (incl drapes) & interior blinds | JU67 | 1392150000 | 114.1 | 114.5 | 115.2 | 115.2 | 115.2 | 115.2 | 114.6p | 114.4p | 111.8 |
| Quilts, eiderdowns, cushions, pouffes & pillows | JU6A | 1392240000 | 91.3 | 91.3 | 91.3 | 91.3 | 93.8 | 93.8 | 93.8p | 93.7p | 90.8 |
| Carpets & rugs | JU6C | 1393000000 | 111.2 | 111.9 | 112.4 | 112.3 | 112.4 | 112.9 | 113.7p | 113.9p | 110.5 |
| Carpets & other textile floor coverings, tufted | JU6F | 1393130000 | 111.3 | 112.1 | 112.4 | 112.5 | 112.6 | 112.9 | 114.0p | 114.0p | 111.0 |
| Cordage, rope, twine & netting | K2WJ | 1394000000 | 100.2 | 100.2 | 100.2 | 101.1 | 101.1 | 101.1 | 101.3p | 101.3p | 102.2 |
| Non-wovens & articles made from non-wovens, except apparel | JU6J | 1395000000 | 101.6 | 101.6 | 101.6 | 101.6 | 101.6 | 101.6 | 101.6p | 102.8p | 102.1 |
| Non-wovens & articles made from non-wovens, except apparel | JU6K | 1395100000 | 101.6 | 101.6 | 101.6 | 101.6 | 101.6 | 101.6 | 101.6p | 102.8p | 102.1 |
| Other technical & industrial textiles | K2WK | 1396000000 | 107.3 | 107.3 | 107.3 | 108.8 | 108.9 | 108.9 | 108.9p | 109.1p | 106.9 |
| Clothing & footwear | | | | | | | | | | | |
| Workwear | JU6V | 1412000000 | 104.7 | 104.7 | 105.0 | 105.0 | 105.0 | 105.0 | 107.5p | 107.8p | 104.2 |
| Other outerwear | JU6Y | 1413000000 | 100.9 | 101.0 | 101.0 | 101.0 | 101.0 | 101.0 | 99.2p | 99.2p | 101.9 |
| Other wearing apparel & accessories n.e.c | K2WR | 1419000000 | 103.7B | 103.7B | 103.7B | 103.7B | 103.7B | 103.7B | 103.7pB | 103.7pB | 102.2 |
| Knitted & crocheted hosiery | JU7P | 1431000000 | 90.2F | 90.2F | 90.2F | 90.2F | 90.6F | 90.6F | 90.6pF | 90.6pF | 90.7 |
| Other knitted & crocheted apparel | K2WS | 1439000000 | 111.0F | 111.0F | 111.0F | 111.4F | 111.4F | 111.4F | 111.4pF | 111.4pF | 109.3 |
| Footwear | JU82 | 1520000000 | 106.6 | 107.0 | 107.2 | 107.7 | 108.5 | 107.7 | 107.7p | 108.1p | 107.9 |
| Footwear with uppers of leather, other than sports footwear, footwear incorporating a protective metal toe-cap | JU84 | 1520130000 | 104.6 | 104.9 | 105.6 | 106.4 | 106.7 | 107.1 | 107.1p | 107.6p | 106.4 |
| Parts of footwear of leather removeable insoles, heel cushions & similar articles; gaiters, leggings | JU88 | 1520400000 | 102.6 | 102.6 | 103.2 | 103.2 | 105.7 | 106.2 | 106.2p | 106.2p | .. |
| Leather & leather products | | | | | | | | | | | |
| Tanned & dressed leather; dressed & dyed fur | JU7R | 1511000000 | 103.5 | 104.5 | 106.9 | 110.7 | 110.7 | 111.0 | 111.3p | 111.3p | 91.5 |
| Luggage, handbags & the like; saddlery & harness | JU7X | 1512000000 | 113.9 | 114.0 | 114.0 | 113.9 | 114.1 | 114.1 | 115.2p | 115.3p | 109.3 |
| Saddlery & harness for any animal, of any material | JU7Y | 1512110000 | .. | .. | .. | 125.7 | 125.8 | 125.6 | 126.9p | 126.9p | .. |
| Wood & wood products | | | | | | | | | | | |
| Wood, sawn & planed | JU89 | 1610000000 | 122.5 | 125.4 | 129.1 | 125.0 | 128.1 | 130.4 | 131.5p | 131.5p | 116.7 |
| Veneer sheets & wood-based panels | JU8F | 1621000000 | 115.1 | 115.5 | 116.3 | 120.2 | 120.8 | 121.0 | 121.1p | 123.5p | 113.3 |
| Particle boards & similar boards of wood | JU8H | 1621130000 | 113.4 | 114.0 | 115.3 | 117.6 | 118.4 | 118.7 | 119.1p | 120.7p | 111.4 |
| Other Builders' carpentry & joinery | JU8J | 1623000000 | 123.0 | 124.0 | 124.5 | 124.7 | 126.1 | 127.1 | 127.2p | 126.9p | 119.6 |
| Windows, french windows & their frames, doors & their frames | JU8K | 1623110000 | 128.7 | 129.8 | 129.9 | 130.0 | 131.8 | 132.1 | 132.1p | 131.5p | 127.1 |
| Builders' joinery & carpentry of wood nec | K2X2 | 1623190000 | 111.9 | 114.0 | 115.5 | 115.7 | 117.7 | 120.3 | 120.3p | 120.3p | 104.4 |
| Prefabricated wooden buildings | K2X3 | 1623200000 | 130.4B | 129.6B | 129.6B | 129.6B | 129.6B | 129.6B | 129.6pB | 129.6pB | 130.4 |
| Wooden containers | K2X4 | 1624000000 | 115.7 | 115.7 | 116.1 | 119.2 | 126.3 | 126.3 | 126.3p | 127.4p | 119.7 |
| Pallets, box pallets & other load boards of wood | JU8L | 1624110000 | 115.0 | 115.1 | 115.1 | 119.0 | 128.6 | 128.6 | 128.6p | 130.1p | 121.2 |
| Other products of wood; articles of cork, straw & plaiting | JU8O | 1629000000 | 133.8 | 133.8 | 131.6 | 131.7 | 131.7 | 133.5 | 133.5p | 133.5p | 133.7 |
| Pulp, paper & paper products | | | | | | | | | | | |
| Paper & paperboard | JU8W | 1712000000 | 121.6 | 122.5 | 124.3 | 124.4 | 125.7 | 126.8 | 127.7p | 128.6p | 117.1 |
| Sulphite wrapping paper & other uncoated paper | K2X6 | 1712420000 | 121.4 | 121.4 | 124.3 | 124.6 | 124.6 | 124.6 | 123.8p | 122.2p | 122.5 |

For B and F see notes

4 Price indices of products manufactured in the United Kingdom (SIC07)

continued

Producer Prices Index: 2005=100, SIC2007

| | | | 2010 Mar | 2010 Apr | 2010 May | 2010 Jun | 2010 Jul | 2010 Aug | 2010 Sep | 2010 Oct | Annual Average ¹ 2009 |
|---|------|------------|-------------|-------------|-------------|-------------|-------------|-------------|-------------|-------------|--|
| Corrugated paper & paperboard & of containers of paper & paperboard | JU9B | 1721000000 | 108.6 | 108.8 | 110.2 | 111.4 | 113.0 | 114.6 | 115.3p | 115.7p | 107.5 |
| Corrugated board, in rolls or sheets | JU9C | 1721110000 | 132.1 | 134.1 | 138.3 | 144.5 | 144.9 | 146.4 | 147.9p | 148.5p | 123.5 |
| Cartons, boxes and cases, of corrugated board | K2X9 | 1721130000 | 108.5 | 108.4 | 110.3 | 111.2 | 114.0 | 117.3 | 118.5p | 119.1p | 109.3 |
| Folding cartons, boxes & cases, of non-corrugated paper & paperboard | JU9D | 1721140000 | 101.2 | 101.2 | 101.0 | 101.4 | 101.4 | 100.4 | 100.1p | 100.1p | 98.8 |
| Household & sanitary goods & toilet requisites | K2XA | 1722000000 | 106.0 | 115.1 | 115.1 | 115.2 | 117.5 | 117.8 | 117.6p | 117.6p | 107.8 |
| Paper stationery | JU9G | 1723000000 | 104.8 | 104.1 | 105.6 | 106.4 | 106.5 | 107.0 | 107.4p | 107.5p | 105.7 |
| Envelopes, letter cards, plain postcards & similar of paper/paperboard | JU9I | 1723120000 | 110.1F | 105.9F | 111.4F | 114.5F | 115.1F | 117.7F | 117.6pF | 118.1pF | 113.8 |
| Registers, account books, binders, forms & other articles of stationery | JU9J | 1723130000 | 99.3 | 99.6 | 100.1 | 100.4 | 100.3 | 100.3 | 101.0p | 101.0p | 100.0 |
| Wallpaper | JU9L | 1724000000 | 107.6F | 109.4F | 109.4F | 109.4F | 109.4F | 109.9F | 109.9pF | 112.9pF | .. |
| Other articles of paper & paperboard | JU9O | 1729000000 | 106.5 | 106.4 | 105.3 | 105.2 | 105.5 | 105.6 | 105.6p | 105.6p | .. |
| Labels of paper or paperboard | JU9P | 1729110000 | 99.1F | 98.9F | 98.9F | 98.9F | 99.5F | 99.7F | 99.7pF | 99.7pF | .. |
| Cigarette paper; bobbins, spools, cops & similar supports; filter paper & paperboard; other articles of paper | JU9Q | 1729190000 | 113.8F | 113.8F | 111.8F | 111.5F | 111.5F | 111.5F | 111.5pF | 111.5pF | 113.3 |
| Printing & recording services | | | | | | | | | | | |
| Other printing services | JU9T | 1812000000 | 105.0 | 105.1 | 104.7 | 104.8 | 104.7 | 104.4 | 104.3p | 104.3p | 103.7 |
| Printing services for advertising catalogues, prospectuses, posters and other printed advertising | JU9U | 1812120000 | 100.2 | 101.8 | 102.3 | 102.6 | 102.5 | 100.4 | 100.6p | 100.3p | .. |
| Printing services for journals and periodicals appearing less than four times a week | JU9V | 1812130000 | 93.5 | 93.4 | 93.0 | 92.5 | 92.4 | 92.5 | 92.7p | 92.9p | 94.9 |
| Printing services for books, maps, hydrographic or similar charts of all kinds | K2XC | 1812140000 | 110.9 | 110.9 | 108.5 | 109.1 | 109.0 | 109.0 | 108.0p | 108.0p | 110.1 |
| Printing services directly onto plastic, glass, metal, wood & ceramics | JU9W | 1812160000 | 98.2 | 97.7 | 99.2 | 98.8 | 98.5 | 97.5 | 97.6p | 97.1p | 95.7 |
| Other printing services nec | JU9X | 1812190000 | 112.2B | 112.1B | 112.0B | 112.1B | 112.2B | 112.3B | 112.2pB | 112.4pB | 108.6 |
| Pre-press & pre-media services | JU9Y | 1813000000 | 89.9 | 89.4 | 89.4 | 89.6 | 89.7 | 89.7 | 89.7p | 89.7p | 91.1 |
| Ancillary services related to printing | K2XD | 1813300000 | 89.2 | 89.3 | 89.3 | 89.5 | 89.6 | 89.6 | 89.6p | 89.6p | 89.8 |
| Reproduction services of recorded media | JUA4 | 1820000000 | 90.6 | 90.8 | 98.1 | 98.1 | 92.3 | 92.2 | 91.9p | 99.9p | 90.5 |
| Reproduction services of sound recording | K2XF | 1820100000 | 98.1B | 98.2B | 110.1B | 110.1B | 100.3B | 100.3B | 100.3pB | 112.2pB | .. |
| Reproduction services of video recording | JUA5 | 1820200000 | 76.8 | 77.5 | 77.8 | 77.8 | 77.9 | 77.9 | 76.9p | 79.5p | 77.4 |
| Reproduction services of software | K2XG | 1820300000 | 96.2F | 96.2F | 96.2F | 96.2F | 96.2F | 96.2F | 96.2pF | 96.2pF | .. |
| Coke & refined petroleum products | | | | | | | | | | | |
| Refined petroleum products, excluding duty | JUA8 | 1920000000 | 150.7 | 161.2 | 161.6 | 154.7 | 151.2 | 149.6 | 149.6p | 153.4p | 117.6 |
| Refined petroleum products, including duty | K2XH | 1920080000 | 134.3 | 140.3 | 140.0 | 137.3 | 135.8 | 135.1 | 135.1p | 137.9p | 117.4 |
| Diesel and gas oil, including duty | K2XO | 1920268000 | 132.3 | 137.7 | 135.7 | 135.1 | 132.4 | 132.2 | 133.6p | 138.0p | 116.2 |
| Chemicals & chemical products | | | | | | | | | | | |
| Dyes & pigments | JUB3 | 2012000000 | 108.6F | 110.2F | 109.9F | 111.7F | 116.8F | 118.0F | 118.3pF | 123.3pF | 106.0 |
| Other inorganic basic chemicals | JUB7 | 2013000000 | 125.5 | 124.7 | 126.7 | 127.0 | 126.8 | 126.7 | 126.4p | 127.0p | 126.7 |
| Oxides, hydroxides and peroxides; hydrazine and hydroxylamine and their inorganic salts | JUC4 | 2013250000 | 183.7F | 183.5F | 183.3F | 183.1F | 183.1F | 183.1F | 183.1pF | 183.1pF | .. |
| Carbonates | JUC8 | 2013430000 | 113.7F | 116.2F | 116.2F | 113.5F | 117.6F | 117.6F | 117.6pF | 117.6pF | .. |

For B and F see notes

4 Price indices of products manufactured in the United Kingdom (SIC07)

continued

Producer Prices Index: 2005=100, SIC2007

| | | | 2010 Mar | 2010 Apr | 2010 May | 2010 Jun | 2010 Jul | 2010 Aug | 2010 Sep | 2010 Oct | Annual Average ¹ 2009 |
|---|------|------------|-------------|-------------|-------------|-------------|-------------|-------------|-------------|-------------|--|
| Other organic basic chemicals | JUD3 | 2014000000 | 150.0 | 153.5 | 156.8 | 147.6 | 156.6 | 157.6 | 157.2p | 159.6p | 134.2 |
| Unsaturated monocarboxylic, cyclanic, cyclenic or cycloterpenic acyclic polycarboxylic acids | JUD8 | 2014330000 | 121.9F | 123.5F | 127.7F | 130.1F | 133.0F | 142.5F | 140.7p | 142.3pF | .. |
| Aromatic polycarboxylic & carboxylic acids with additional oxygen functions & their derivatives | JUD9 | 2014340000 | 127.4F | 127.1F | 127.4F | 128.1F | 132.9F | 133.5F | 133.7p | 134.1pF | .. |
| Fertilisers & nitrogen compounds | JUF3 | 2015000000 | 197.1 | 214.4 | 215.9 | 218.0 | 217.1 | 224.6 | 233.0p | 240.0p | 217.6 |
| Plastics in primary forms | JUG6 | 2016000000 | 132.0 | 133.9 | 135.8 | 135.8 | 135.2 | 134.9 | 136.0p | 138.7p | 111.8 |
| Polymers of ethylene, in primary forms | K2XW | 2016100000 | 173.8 | 172.0 | 170.3 | 168.1 | 168.3 | 164.8 | 171.6p | 177.2p | .. |
| Paints, varnishes & similar coatings, printing ink & mastics | JUI2 | 2030000000 | 115.9 | 116.7 | 117.0 | 116.9 | 116.6 | 116.6 | 116.6p | 116.6p | 115.6 |
| Paints & varnishes based on polyesters, acrylic or vinyl polymers, in a non-aqueous medium; solutions | JUI4 | 2030120000 | 113.6 | 113.6 | 113.6 | 113.6 | 113.8 | 113.9 | 114.1p | 114.2p | 113.0 |
| Other paints & varnishes; prepared driers | JUI6 | 2030220000 | 111.7F | 111.7F | 111.7F | 111.7F | 115.5F | 115.5F | 115.5p | 115.5pF | 118.0 |
| Printing ink | JUI8 | 2030240000 | 107.2F | 107.4F | 107.6F | 107.5F | 104.1F | 104.1F | 104.1p | 104.1pF | .. |
| Soap & detergents, cleaning & polishing preparations | JUI9 | 2041000000 | 120.0 | 119.8 | 119.7 | 124.3 | 124.3 | 120.8 | 120.9p | 121.0p | 120.6 |
| Soap & organic surface-active products & preparations for use as soap | JUJ4 | 2041310000 | 99.1 | 99.1 | 101.4 | 101.4 | 101.4 | 102.3 | 103.6p | 105.5p | 99.2 |
| Detergents & washing preparations | K2Y2 | 2041320000 | 120.5 | 120.2 | 120.1 | 126.3 | 126.3 | 121.6 | 121.6p | 121.6p | 121.4 |
| Perfumes & toilet preparations | JUJ7 | 2042000000 | 103.4 | 103.5 | 103.2 | 102.5 | 102.8 | 102.8 | 102.8p | 103.6p | 102.2 |
| Beauty, make-up or skin-care preparations | K2Y4 | 2042150000 | 101.9F | 102.2F | 102.2F | 102.2F | 102.2F | 102.9F | 103.0p | 103.0pF | .. |
| Shampoos, hair lacquers, preparations for permanent waving or straightening | K2Y5 | 2042160000 | 108.2 | 108.2 | 108.2 | 106.1 | 106.3 | 106.4 | 106.4p | 106.4p | .. |
| Preparations for oral or dental hygiene | K2Y6 | 2042180000 | 117.2F | 117.2F | 117.2F | 117.2F | 117.2F | 117.2F | 117.2p | 117.2pF | .. |
| Shaving preparations; personal deodorants & antiperspirants; bath preparations | JUK3 | 2042190000 | 101.3 | 101.2 | 101.2 | 100.6 | 101.1 | 101.1 | 101.0p | 101.1p | 99.5 |
| Explosives | JUK4 | 2051000000 | 130.3F | 130.3F | 129.1F | 129.0F | 129.0F | 129.0F | 127.7p | 127.7pF | 125.0 |
| Glues | JUK8 | 2052000000 | 113.0 | 113.0 | 113.0 | 113.2 | 113.3 | 116.6 | 116.8p | 116.8p | 112.8 |
| Essential oils | JUL2 | 2053000000 | 109.9 | 108.5 | 108.0 | 107.3 | 107.5 | 107.3 | 107.6p | 109.0p | 110.6 |
| Other chemical products nec | JUL4 | 2059000000 | 115.8B | 116.1B | 115.5B | 115.4B | 115.4B | 116.0B | 116.1p | 116.5pB | 118.8 |
| Photographic plates & film & instant print film | K2Y7 | 2059110000 | 121.9F | 124.3F | 125.2F | 124.8F | 124.9F | 125.7F | 126.1p | 128.4pF | .. |
| Man-made fibres | JUM5 | 2060000000 | 119.1F | 122.3F | 125.7F | 127.3F | 128.3F | 127.9F | 127.4p | 128.9pF | 112.0 |
| Pharmaceuticals | | | | | | | | | | | |
| Pharmaceutical preparations | JUN2 | 2120000000 | 106.3 | 106.8 | 106.6 | 110.0 | 111.4 | 111.4 | 111.0p | 109.7p | 104.5 |
| Medicaments, containing penicillins or other antibiotics | JUN3 | 2120110000 | 117.2 | 117.4 | 117.4 | 118.1 | 118.1 | 118.0 | 118.0p | 118.0p | 110.0 |
| Medicaments, containing hormones, but not antibiotics | K2YA | 2120120000 | 100.9F | 100.6F | 102.2F | 132.7F | 138.8F | 138.8F | 135.5p | 126.9pF | .. |
| Medicaments, containing alkaloids or derivatives thereof, but not hormones or antibiotics | JUN4 | 2120130000 | 102.8 | 103.7 | 103.0 | 102.7 | 103.2 | 103.2 | 103.1p | 102.6p | 102.5 |
| Rubber & plastic products | | | | | | | | | | | |
| Rubber tyres & tubes; retreading & rebuilding of rubber tyres | K2YD | 2211000000 | 108.8F | 108.9F | 108.9F | 110.6F | 110.6F | 111.3F | 111.3p | 112.2pF | 109.6 |
| Other rubber products | JUN9 | 2219000000 | 115.8 | 115.4 | 115.1 | 116.5 | 116.7 | 116.7 | 116.9p | 117.7p | 116.0 |
| Unvulcanised rubber and articles thereof | JUO2 | 2219200000 | 128.5F | 128.5F | 128.5F | 135.6F | 135.6F | 135.6F | 135.6p | 135.6pF | 125.4 |
| Other articles of vulcanised rubber nec | JUO8 | 2219730000 | 114.6 | 114.6 | 114.6 | 115.1 | 115.1 | 115.1 | 115.9p | 116.2p | 114.9 |
| Plastic plates, sheets, tubes & profiles | JUO9 | 2221000000 | 115.8 | 116.5 | 116.9 | 118.2 | 118.9 | 119.9 | 119.9p | 120.4p | 112.1 |
| Monofilament > 1 mm, rods, sticks & profile shapes, of plastics | JUP2 | 2221100000 | 97.7 | 97.7 | 97.7 | 97.7 | 97.2 | 97.3 | 100.0p | 100.0p | 90.4 |

For B and F see notes

4 Price indices of products manufactured in the United Kingdom (SIC07)

continued

Producer Prices Index: 2005=100, SIC2007

| | | | 2010 Mar | 2010 Apr | 2010 May | 2010 Jun | 2010 Jul | 2010 Aug | 2010 Sep | 2010 Oct | Annual Average ¹ 2009 |
|---|------|------------|-------------|-------------|-------------|-------------|-------------|-------------|-------------|-------------|--|
| Artificial guts, of hardened proteins, cellulosic materials tubes, pipes and hoses, rigid | JUP3 | 2221210000 | 120.9 | 120.5 | 117.2 | 120.0 | 120.7 | 123.3 | 123.7p | 124.0p | 121.4 |
| Other tubes, pipes, hoses & fittings thereof, of plastics | K2YF | 2221290000 | 128.1 | 128.1 | 128.1 | 129.4 | 131.8 | 132.3 | 132.3p | 132.3p | 129.9 |
| Plates, sheets, film, foil & strip, of plastics | JUP4 | 2221300000 | 119.7 | 121.7 | 123.8 | 125.5 | 126.0 | 126.2 | 124.8p | 125.3p | 110.5 |
| Other plates, sheets, film, foil & strip, of plastics, cellular | JUP5 | 2221410000 | 100.4 | 99.9 | 100.3 | 100.6 | 101.4 | 104.8 | 106.7p | 108.2p | 102.6 |
| Other plates, sheets, film, foil & strip, of plastics, non-cellular | JUP6 | 2221420000 | 113.1B | 113.1B | 113.1B | 113.1B | 113.1B | 113.1B | 113.1pB | 113.6pB | 112.7 |
| Plastic packing goods | JUP7 | 2222000000 | 114.5 | 115.8 | 116.1 | 116.1 | 117.3 | 117.4 | 117.5p | 119.0p | 113.5 |
| Sacks & bags (including cones), of polymers of ethylene | K2YG | 2222110000 | 116.3 | 117.7 | 117.8 | 118.6 | 118.9 | 118.9 | 118.8p | 119.1p | 115.4 |
| Carboys, bottles, flasks & similar articles of plastics | JUQ2 | 2222140000 | 117.3 | 120.4 | 120.9 | 121.0 | 121.4 | 122.0 | 122.4p | 122.4p | 117.2 |
| Other plastic packing goods | JUQ3 | 2222190000 | 114.7 | 115.0 | 115.0 | 114.5 | 117.5 | 117.2 | 117.2p | 122.4p | 110.9 |
| Builders' ware of plastic | JUQ4 | 2223000000 | 110.8 | 110.9 | 111.0 | 111.2 | 111.3 | 111.3 | 111.2p | 111.5p | 109.3 |
| Baths, wash basins, lavatory pans & covers | JUQ5 | 2223120000 | 114.5 | 114.5 | 114.5 | 114.5 | 114.5 | 114.5 | 114.5p | 115.2p | 113.7 |
| Doors, windows & frames & thresholds for doors; shutters, blinds and similar articles | K2YI | 2223140000 | 107.9 | 107.9 | 108.1 | 107.8 | 108.0 | 108.0 | 108.0p | 107.9p | 107.9 |
| Builders' ware of plastics nec | JUQ7 | 2223190000 | 110.9 | 111.1 | 111.1 | 111.3 | 111.3 | 111.3 | 111.3p | 111.8p | 109.2 |
| Prefabricated buildings of plastics | JUQ8 | 2223200000 | 120.0 | 120.0 | 120.0 | 120.0 | 120.0 | 120.0 | 123.8p | 123.8p | 104.2 |
| Other plastic products | K2YJ | 2229000000 | 108.5 | 108.3 | 108.2 | 107.7 | 108.0 | 108.0 | 109.3p | 109.8p | 106.8 |
| Tableware, kitchenware, other household articles & toilet articles of plastics | JUR3 | 2229230000 | 102.9F | 103.2F | 102.5F | 102.5F | 102.5F | 100.9F | 105.1pF | 105.1pF | 100.3 |
| Other articles of plastics | JUR6 | 2229290000 | 105.1 | 105.1 | 105.1 | 105.1 | 105.5 | 105.5 | 108.0p | 107.8p | 105.2 |
| Manufacturing services of other plastic products | JUR7 | 2229910000 | 107.8 | 107.4 | 107.2 | 106.2 | 106.5 | 106.5 | 106.8p | 107.9p | 106.5 |
| Non-metallic mineral products | | | | | | | | | | | |
| Shaped & processed flat glass | K2YL | 2312000000 | 126.4 | 126.3 | 126.1 | 126.2 | 125.8 | 126.3 | 125.9p | 123.8p | 113.8 |
| Glass mirrors; multiple walled insulating units of glass | JUS4 | 2312130000 | 144.7 | 144.6 | 144.6 | 144.6 | 144.6 | 144.5 | 144.5p | 144.5p | 130.8 |
| Hollow glass | JUS5 | 2313000000 | 127.6 | 127.5 | 127.8 | 127.5 | 127.5 | 127.5 | 127.5p | 127.5p | 128.7 |
| Bottles, jars, phials & other containers of glass | JUS6 | 2313110000 | 128.4F | 128.3F | 128.6F | 128.3F | 128.3F | 128.3F | 128.3pF | 128.3pF | .. |
| Refractory products | JUT6 | 2320000000 | 126.5F | 126.5F | 126.5F | 126.5F | 126.5F | 126.5F | 126.5pF | 126.5pF | 123.8 |
| Ceramic tiles & flags | JUT9 | 2331000000 | 85.9 | 91.5 | 91.6 | 91.4 | 91.4 | 91.4 | 91.1p | 91.1p | 82.6 |
| Bricks, tiles & construction products, in baked clay | JUU3 | 2332000000 | 116.5 | 116.8 | 116.9 | 117.7 | 117.5 | 118.8 | 118.1p | 117.4p | 115.1 |
| Non-refractory ceramic building bricks, flooring blocks | K2YO | 2332110000 | 118.6 | 118.9 | 119.0 | 119.9 | 119.6 | 121.2 | 120.4p | 119.6p | 117.2 |
| Ceramic household & ornamental articles | JUU6 | 2341000000 | 118.2 | 118.2 | 121.3 | 121.3 | 123.1 | 123.1 | 123.1p | 123.1p | 116.8 |
| Ceramic sanitary fixtures | JUU8 | 2342000000 | 130.7 | 136.7 | 134.8 | 134.8 | 135.3 | 135.3 | 135.3p | 135.3p | 130.7 |
| Other ceramic products | JUV5 | 2349000000 | 117.2F | 118.3F | 118.3F | 118.7F | 118.7F | 118.7F | 118.7pF | 118.5pF | .. |
| Cement | JUV6 | 2351000000 | 133.8 | 133.8 | 133.9 | 133.7 | 133.4 | 133.3 | 133.3p | 133.4p | 138.5 |
| Portland cement, aluminous cement, slag cement & similar hydraulic cements | JUV7 | 2351120000 | 133.8 | 133.8 | 133.9 | 133.7 | 133.4 | 133.3 | 133.3p | 133.4p | 138.5 |
| Lime & plaster | JUV8 | 2352000000 | 123.1 | 126.5 | 126.3 | 125.1 | 124.7 | 124.9 | 125.0p | 125.0p | 124.4 |
| Calcined or agglomerated dolomite | JUW3 | 2352300000 | 121.0F | 125.5F | 125.3F | 123.7F | 123.1F | 123.4F | 123.5pF | 123.6pF | .. |
| Concrete products for construction purposes | JUW4 | 2361000000 | 117.4 | 116.8 | 116.8 | 116.9 | 117.3 | 117.2 | 117.4p | 118.2p | 118.7 |
| Tiles, flagstones, bricks & similar articles | JUW5 | 2361110000 | 121.1 | 120.2 | 120.2 | 120.4 | 120.8 | 120.7 | 120.8p | 121.8p | 121.1 |
| Prefabricated structural components for building or civil engineering | JUW6 | 2361120000 | 108.6 | 108.7 | 108.7 | 108.8 | 108.9 | 109.0 | 109.4p | 109.5p | 112.9 |

For B and F see notes

4 Price indices of products manufactured in the United Kingdom (SIC07)

continued

Producer Prices Index: 2005=100, SIC2007

| | | | 2010 | 2010 | 2010 | 2010 | 2010 | 2010 | 2010 | 2010 | 2010 | Annual Average ¹ 2009 |
|--|------|------------|--------|--------|--------|--------|--------|--------|--------|---------|------|--|
| | | | Mar | Apr | May | Jun | Jul | Aug | Sep | Oct | | |
| Ready-mixed concrete | JUW8 | 2363000000 | 111.6 | 112.5 | 112.4 | 111.4 | 111.3 | 110.1 | 110.9p | 111.0p | | 110.8 |
| Mortars | JUW9 | 2364000000 | 109.9F | 109.2F | 109.8F | 109.9F | 110.6F | 110.0F | 109.9p | 110.0pF | | 107.8 |
| Other articles of concrete, plaster & cement | JUX6 | 2369000000 | 114.2F | 114.2F | 114.2F | 114.2F | 114.2F | 114.2F | 114.2p | 114.2pF | | 114.6 |
| Cut, shaped & finished stone | JUX8 | 2370000000 | 116.2B | 115.8B | 115.3B | 115.7B | 115.6B | 115.7B | 115.8p | 115.9pB | | 116.0 |
| Abrasive products | K2YW | 2391000000 | 104.6 | 104.7 | 104.7 | 106.4 | 106.6 | 106.6 | 102.8p | 101.5p | | 105.9 |
| Other non-metallic mineral products nec | JUY4 | 2399000000 | 131.8 | 132.8 | 131.7 | 133.6 | 133.3 | 131.9 | 131.2p | 131.7p | | 126.8 |
| Articles of asphalt or of similar material | K2YY | 2399120000 | 160.6F | 161.2F | 160.3F | 160.3F | 161.4F | 164.6F | 162.9p | 162.9pF | | 151.4 |
| Bituminous mixtures based on natural & artificial stone | JUY6 | 2399130000 | 150.3B | 153.4B | 152.4B | 157.6B | 155.4B | 151.5B | 149.9p | 149.7pB | | 142.4 |
| Non-metallic mineral products nec | JUY8 | 2399190000 | 105.5 | 104.6 | 103.2 | 102.2 | 102.5 | 102.3 | 102.7p | 104.2p | | 104.0 |
| Basic metals | | | | | | | | | | | | |
| Basic iron & steel & of ferro alloys | K2YZ | 2410000000 | 111.3B | 121.9B | 126.6B | 128.4B | 131.3B | 130.2B | 129.6p | 129.9pB | | 111.5 |
| Bars & rods, hot rolled, in irregularly wound coils | K2Z2 | 2410650000 | 133.3 | 152.5 | 156.3 | 165.6 | 169.4 | 169.2 | 168.9p | 167.7p | | 129.3 |
| Cold drawn bars | JV23 | 2431000000 | 129.6F | 133.5F | 143.3F | 154.1F | 150.4F | 150.7F | 152.1p | 155.7pF | | 128.3 |
| Cold rolled narrow strip | JV27 | 2432000000 | 113.4 | 123.7 | 130.5 | 130.8 | 126.1 | 117.0 | 118.6p | 119.9p | | .. |
| Cold formed or folded products | K2Z3 | 2433000000 | 107.1B | 108.6B | 112.5B | 112.5B | 116.6B | 116.0B | 116.2p | 116.2pB | | .. |
| Cold drawn wire | JV2C | 2434000000 | 152.8F | 153.1F | 158.6F | 158.4F | 158.4F | 162.5F | 168.3p | 168.3pF | | 148.5 |
| Precious metals | JV2E | 2441000000 | 157.3F | 160.2F | 166.0F | 171.1F | 170.2F | 163.1F | 166.8p | 173.5pF | | 147.4 |
| Aluminium | JV2H | 2442000000 | 100.4B | 102.6B | 103.8B | 102.0B | 101.4B | 102.0B | 102.1p | 102.6pB | | .. |
| Aluminium, unwrought | JV2I | 2442110000 | 92.2 | 96.9 | 99.3 | 95.4 | 94.0 | 95.4 | 95.8p | 96.8p | | .. |
| Aluminium bars, rods & profiles | K2Z7 | 2442220000 | 92.2F | 92.2F | 92.5F | 92.5F | 92.5F | 92.6F | 92.6pF | 92.6pF | | .. |
| Aluminium foil, of a thickness less or equal to 0.2 mm | JV2L | 2442250000 | 111.0F | 111.0F | 111.0F | 111.0F | 111.0F | 111.0F | 110.1p | 110.1pF | | .. |
| Lead, zinc & tin | JV2N | 2443000000 | 209.4 | 214.7 | 205.3 | 198.8 | 192.8 | 201.6 | 208.9p | 210.8p | | .. |
| Lead plates, sheets, strip & foil; lead powders & flakes | JV2Q | 2443210000 | 188.6F | 188.7F | 189.5F | 185.0F | 177.5F | 176.3F | 180.7p | 187.4pF | | .. |
| Copper | JV2R | 2444000000 | 158.5B | 164.6B | 166.1B | 167.0B | 167.1B | 171.3B | 166.5p | 166.8pB | | 149.5 |
| Copper wire | JV2U | 2444230000 | 153.6F | 157.5F | 168.2F | 172.8F | 176.2F | 184.5F | 170.9p | 167.8pF | | .. |
| Other non-ferrous metal | K2Z9 | 2445000000 | 108.7 | 110.9 | 113.4 | 121.6 | 115.1 | 116.4 | 117.2p | 122.8p | | 87.6 |
| Other non-ferrous metals & articles thereof | K5VA | 2445300000 | 67.6F | 68.6F | 68.7F | 69.5F | 69.3F | 69.1F | 69.7pF | 75.7pF | | .. |
| Casting services of iron | JV33 | 2451000000 | 131.9 | 132.7 | 134.5 | 134.3 | 133.8 | 133.9 | 135.9p | 136.3p | | 131.2 |
| Casting services of spheroidal cast iron | JV35 | 2451120000 | 132.9F | 135.3F | 139.3F | 138.4F | 137.1F | 136.8F | 138.2p | 139.3pF | | .. |
| Casting services of grey cast iron | JV36 | 2451130000 | 132.1 | 132.1 | 131.9 | 131.9 | 131.9 | 132.2 | 135.9p | 135.9p | | 131.9 |
| Casting services of light metals | JV3B | 2453000000 | 118.0 | 119.0 | 119.0 | 119.9 | 119.7 | 119.7 | 119.7p | 120.4p | | 116.0 |
| Fabricated metal products, except machinery & equipment | | | | | | | | | | | | |
| Metal structures & parts of structures | JV3D | 2511000000 | 117.3 | 117.1 | 121.5 | 123.1 | 125.0 | 125.9 | 126.8p | 127.0p | | 120.5 |
| Doors & windows of metal | K2ZD | 2512000000 | 90.9 | 89.6 | 90.6 | 90.6 | 90.6 | 92.1 | 92.5p | 92.1p | | 89.8 |
| Central heating radiators & boilers | JV3H | 2521000000 | 116.3 | 118.1 | 118.1 | 118.1F | 118.1F | 118.0F | 118.0p | 118.2pF | | 113.8 |
| Other tanks, reservoirs & containers of metal | JV3K | 2529000000 | 126.9 | 127.5 | 126.4 | 126.9 | 132.5 | 133.4 | 134.1p | 136.2p | | 129.7 |
| Steam generators, except central heating hot water boilers | K2ZF | 2530000000 | 118.2F | 118.2F | 118.2F | 111.0F | 111.0F | 111.0F | 111.0p | 111.0pF | | 120.2 |
| Weapons & ammunition | K2ZG | 2540000000 | 109.9 | 111.6 | 111.6 | 111.5 | 112.0 | 112.6 | 112.6p | 112.6p | | .. |
| Repair, maintenance, installation of weapons & ammunition | K2ZH | 2540990000 | 109.9 | 111.6 | 111.6 | 111.5 | 112.0 | 112.6 | 112.6p | 112.6p | | .. |
| Forging, pressing, stamping & roll-forming services of metal | JV3U | 2550000000 | 116.0 | 115.9 | 115.6 | 115.0 | 113.5 | 114.5 | 115.8p | 117.4p | | 115.0 |
| Other forming services of metal | JV3X | 2550130000 | 113.8 | 112.7 | 112.5 | 111.9 | 112.1 | 111.9 | 112.9p | 114.8p | | 113.6 |

For B and F see notes

4 Price indices of products manufactured in the United Kingdom (SIC07)

continued

Producer Prices Index: 2005=100, SIC2007

| | | | 2010 Mar | 2010 Apr | 2010 May | 2010 Jun | 2010 Jul | 2010 Aug | 2010 Sep | 2010 Oct | Annual Average ¹ 2009 |
|--|------|------------|-------------|-------------|-------------|-------------|-------------|-------------|-------------|-------------|--|
| Treatment & coating services of metals | JV3Y | 2561000000 | 113.9 | 114.2 | 114.5 | 114.4 | 114.0 | 113.7 | 113.7p | 113.8p | 112.5 |
| Metallic coating services of metal | JV3Z | 2561110000 | 124.0 | 125.1 | 125.8 | 125.5 | 124.2 | 123.4 | 123.4p | 123.7p | 119.4 |
| Non-metallic coating services of metal | JV42 | 2561120000 | 105.0F | 105.0F | 105.0F | 105.0F | 105.0F | 105.0F | 105.0p | 105.0pF | 105.8 |
| Machining services | JV45 | 2562000000 | 122.9B | 122.9B | 122.9B | 121.8B | 121.9B | 122.5B | 122.5p | 122.5pB | 112.2 |
| Cutlery | K2ZI | 2571000000 | 111.9F | 111.9F | 111.9F | 111.4F | 111.4F | 111.4F | 111.4p | 109.6pF | 109.0 |
| Locks and hinges | JV47 | 2572000000 | 110.0 | 110.1 | 110.6 | 110.6 | 110.6 | 110.7 | 110.7p | 110.7p | 108.7 |
| Tools | JV4B | 2573000000 | 115.2 | 115.0 | 115.0 | 115.6 | 116.7 | 117.1 | 117.1p | 117.2p | 114.3 |
| Other tools | K2ZN | 2573600000 | 117.2F | 117.2F | 117.2F | 117.2F | 117.2F | 117.2F | 117.2p | 117.2pF | 117.1 |
| Light metal packaging | JV4J | 2592000000 | 121.8 | 121.6 | 121.1 | 120.9F | 120.8F | 120.8F | 120.8p | 120.4pF | 121.3 |
| Wire products, chain & springs | K2ZO | 2593000000 | 111.7 | 119.9 | 127.1 | 124.4B | 121.6B | 118.8B | 119.1p | 119.2pB | 103.9 |
| Other fabricated metal products nec | JV4X | 2599000000 | 112.5 | 113.6 | 113.7 | 113.7 | 113.8 | 113.8 | 115.7p | 115.7p | 111.8 |
| Other articles of base metal nec | K2ZT | 2599290000 | 116.0 | 116.0 | 116.0 | 116.2 | 116.2 | 116.3 | 116.4p | 116.4p | 115.1 |
| Computers, communication equipment & consumer electronics | | | | | | | | | | | |
| Computers & peripheral equipment | JV5A | 2620000000 | 104.2B | 103.0B | 106.2B | 105.6B | 103.8B | 103.5B | 102.4p | 101.5pB | 86.9 |
| Portable automatic data processing machines weighing up to 10kg, such as laptop & notebook computers | JV5B | 2620110000 | 61.6F | 61.9F | 61.9F | 58.9F | 58.9F | 58.9F | 58.9p | 58.9pF | 60.6 |
| Digital automatic data processing machines | JV5D | 2620140000 | 67.0 | 67.0 | 67.6 | 66.0 | 66.0 | 66.0 | 60.8p | 60.9p | 67.8 |
| Communication equipment | JV5J | 2630000000 | 108.0B | 108.0B | 108.0B | 108.0B | 110.9B | 110.9B | 110.9p | 110.9pB | 104.7 |
| Burglar or fire alarms & similar apparatus | JV5N | 2630500000 | 111.0F | 111.0F | 111.0F | 111.0F | 111.0F | 111.0F | 111.0p | 111.0pF | 106.4 |
| Consumer electronics | JV5O | 2640000000 | 88.4B | 90.2B | 90.3B | 90.3B | 88.6B | 87.2B | 87.1p | 87.1pB | 86.2 |
| Irradiation, electromedical & electrotherapeutic equipment | K325 | 2660000000 | 112.8 | 112.8 | 112.8 | 112.8 | 112.8 | 112.8 | 112.8p | 112.8p | 113.0 |
| Apparatus based on the use of X-rays or of alpha, beta or gamma radiations | K326 | 2660110000 | 119.4F | 119.4F | 119.4F | 119.4F | 119.4F | 119.4F | 119.4p | 119.4pF | .. |
| Machinery & equipment nec | | | | | | | | | | | |
| Electric motors, generators & transformers | JV6R | 2711000000 | 110.5 | 111.7 | 112.0 | 111.3 | 111.3 | 111.3 | 111.6p | 112.1p | 109.9 |
| Electricity distribution & control apparatus | JV72 | 2712000000 | 113.9 | 114.0 | 114.1 | 114.1 | 114.1 | 114.1 | 114.3p | 116.0p | 108.6 |
| Parts of electricity distribution or control apparatus | JV78 | 2712400000 | 109.5 | 109.5 | 109.5 | 109.5 | 109.7 | 109.7 | 110.0p | 110.1p | 106.5 |
| Other electronic & electric wires & cables | K32F | 2732000000 | 186.5 | 194.3 | 195.9 | 195.0 | 193.6 | 193.1 | 201.5p | 204.4p | 157.1 |
| Other electric conductors, for a voltage up to & inc 1000 V | JV7F | 2732130000 | 185.9 | 190.9 | 194.8 | 191.7 | 193.1 | 193.1 | 197.0p | 200.4p | 155.2 |
| Electric lighting equipment | K32G | 2740000000 | 111.7 | 112.2 | 112.2 | 112.2 | 111.0 | 109.3 | 109.3p | 104.5p | 110.3 |
| Chandeliers & other electric ceiling or wall lighting fittings | JV7S | 2740250000 | 109.7F | 109.7F | 109.7F | 109.7F | 109.7F | 99.1F | 99.1p | 100.6pF | 107.4 |
| Other lamps and lighting fittings nec | K32I | 2740390000 | 109.8 | 110.5 | 110.5 | 110.5 | 111.1 | 111.1 | 111.1p | 111.1p | 112.3 |
| Electric domestic appliances | JV7V | 2751000000 | 119.4 | 119.4 | 119.6 | 119.2 | 119.2 | 119.4 | 119.6p | 119.6p | 115.5 |
| Electrical instantaneous or storage water heaters & immersion heaters | JV82 | 2751250000 | 135.5F | 135.7F | 137.5F | 137.7F | 137.7F | 138.3F | 138.4p | 137.2pF | 132.6 |
| Parts of electric domestic appliances | JV86 | 2751300000 | 126.3F | 126.2F | 125.3F | 125.9F | 125.9F | 127.1F | 127.6p | 127.6pF | 122.2 |
| Non-electric domestic appliances | JV87 | 2752000000 | 117.4 | 117.4 | 117.4 | 117.4 | 117.4 | 117.8 | 118.4p | 118.4p | 117.6 |
| Other electrical equipment | JV8D | 2790000000 | 101.3 | 102.7 | 105.5 | 106.2 | 105.6 | 104.9 | 105.5p | 105.6p | 102.0 |
| Electrical machines & apparatus having individual functions | JV8E | 2790110000 | 91.3F | 91.3F | 91.3F | 97.6F | 97.9F | 97.9F | 97.1p | 96.9pF | 96.0 |
| Other fixed capacitors | K32O | 2790520000 | 98.9F | 104.4F | 103.7F | 105.8F | 104.0F | 99.3F | 101.6p | 102.0pF | 108.8 |
| Electrical signalling, safety or traffic control equipment | JV8K | 2790700000 | 97.5 | 97.4 | 97.3 | 97.3 | 97.0 | 98.0 | 98.1p | 98.1p | 95.9 |

For B and F see notes

4 Price indices of products manufactured in the United Kingdom (SIC07)

continued

Producer Prices Index: 2005=100, SIC2007

| | | | 2010 Mar | 2010 Apr | 2010 May | 2010 Jun | 2010 Jul | 2010 Aug | 2010 Sep | 2010 Oct | Annual Average ¹ 2009 |
|--|-------------|------------|-------------|-------------|-------------|-------------|-------------|-------------|-------------|-------------|--|
| Engines & turbines, except aircraft, vehicle & cycle engines | JV8L | 2811000000 | 116.1 | 115.5 | 116.0 | 115.9 | 115.7 | 115.4 | 115.5p | 115.7p | 113.5 |
| Other compression-ignition internal combustion piston engines | K32P | 2811130000 | 112.5 | 112.1 | 113.6 | 113.3 | 112.1 | 111.4 | 111.6p | 111.9p | .. |
| Parts for spark-ignition internal combustion engines | JV8M | 2811410000 | 120.7 | 119.9 | 119.8 | 119.8 | 120.3 | 120.3 | 120.3p | 120.5p | 117.5 |
| Fluid power equipment | JV8N | 2812000000 | 119.2F | 119.2F | 119.7F | 119.2F | 120.0F | 120.0F | 120.0pF | 120.0pF | 114.8 |
| Other pumps & compressors | JV8R | 2813000000 | 121.2 | 121.4 | 121.3 | 121.5 | 121.3 | 121.3 | 121.4p | 121.9p | 120.8 |
| Other taps & valves | JV8Z | 2814000000 | 126.0 | 126.0 | 127.5 | 127.6 | 127.4 | 127.4 | 127.7p | 127.9p | 131.3 |
| Pressure-reducing, control, check & safety valves | JV92 | 2814110000 | 111.4F | 111.4F | 111.4F | 111.4F | 111.4F | 111.4F | 114.2pF | 115.2pF | .. |
| Taps, cocks, valves for sinks, wash basins, bidets, water cisterns bath & similar fixtures | JV93 | 2814120000 | 156.0F | 156.0F | 159.3F | 159.5F | 159.1F | 159.1F | 159.1pF | 159.1pF | 152.1 |
| Process control valves, gate valves, globe valves & other valves | JV94 | 2814130000 | 100.3F | 100.2F | 100.1F | 100.1F | 100.1F | 100.1F | 100.1pF | 100.1pF | 118.8 |
| Bearings, gears, gearing & driving elements | JV95 | 2815000000 | 122.6 | 123.7 | 123.1 | 122.2 | 122.2 | 120.0 | 120.4p | 121.4p | 121.9 |
| Lifting & handling equipment | JV9F | 2822000000 | 111.8 | 111.5 | 111.5 | 111.5 | 111.7 | 111.6 | 111.6p | 111.8p | 110.3 |
| Derricks; cranes; mobile lifting frames, straddle carriers & works trucks fitted with a crane | JV9I | 2822140000 | 107.3F | 106.7F | 106.3F | 105.9F | 106.0F | 105.7F | 106.0pF | 106.8pF | 107.3 |
| Other lifting, handling, loading or unloading machinery | JV9M | 2822180000 | 91.2F | 91.2F | 91.2F | 90.3F | 90.6F | 90.6F | 90.6pF | 90.8pF | .. |
| Buckets, shovels, grabs & grips for cranes, excavators | JV9N | 2822200000 | 116.3F | 116.3F | 116.3F | 116.9F | 116.5F | 116.4F | 116.4pF | 116.4pF | .. |
| Office machinery & equipment (except computers & peripheral equipment) | JV9O | 2823000000 | 108.9F | 108.7F | 108.6F | 108.4F | 109.2F | 109.1F | 109.3pF | 109.6pF | 108.6 |
| Non-domestic cooling & ventilation equipment | JV9U | 2825000000 | 116.0 | 113.7 | 115.6 | 114.4 | 116.5 | 116.0 | 118.3p | 118.9p | 112.4 |
| Heat exchange units & machinery for liquefying air | JV9V | 2825110000 | 172.6 | 164.7 | 165.1 | 164.5 | 165.1 | 165.0 | 165.1p | 165.3p | 164.4 |
| Air conditioning machines | K333 | 2825120000 | 109.0F | 109.0F | 109.0F | 109.0F | 109.0F | 109.0F | 109.0pF | 109.0pF | 108.4 |
| Refrigeration & freezing equipment & heat pumps | JV9W | 2825130000 | 108.7F | 108.2F | 108.1F | 107.7F | 109.0F | 108.8F | 109.0pF | 109.7pF | .. |
| Other general-purpose machinery nec | K334 | 2829000000 | 107.7 | 107.4 | 107.8 | 107.3 | 107.2 | 107.1 | 107.2p | 110.3p | 106.5 |
| Filtering or purifying machinery & apparatus, for liquid | JVA2 | 2829120000 | 105.5 | 105.6 | 104.5 | 103.2 | 102.4 | 102.4 | 101.9p | 101.9p | 103.7 |
| Machinery for cleaning, filling, packing or wrapping bottles or other containers | JVA4 | 2829210000 | 103.7F | 103.7F | 109.7F | 109.7F | 109.7F | 109.7F | 109.7pF | 109.7pF | 103.5 |
| Parts of centrifuges; parts of filtering or purifying machinery & apparatus for liquids or gases | K337 | 2829820000 | 111.6F | 111.0F | 110.6F | 109.9F | 109.7F | 109.5F | 109.8pF | 123.6pF | .. |
| Agricultural & forestry machinery | JVB2 | 2830000000 | 115.4 | 114.9 | 115.4 | 115.4 | 115.3 | 114.6 | 115.4p | 115.6p | 110.8 |
| Metal forming machinery | K33B | 2841000000 | 108.8F | 108.8F | 108.8F | 108.8F | 108.8F | 108.7F | 108.7pF | 110.7pF | 107.1 |
| Machine tools nec | JVD6 | 2849000000 | 105.0 | 105.0 | 105.0 | 105.0 | 105.0 | 105.0 | 105.0p | 105.0p | 105.2 |
| Machinery for mining, quarrying & construction | K33E | 2892000000 | 110.3 | 109.4 | 109.6 | 110.2 | 110.7 | 110.6 | 110.8p | 111.0p | 109.6 |
| Other self-propelled mechanical shovels, excavators & shovel loaders; self-propelled machinery for mining | JVE7 | 2892270000 | 110.8F | 110.8F | 110.8F | 110.8F | 110.8F | 110.8F | 111.1pF | 111.1pF | .. |
| Dumpers for off-highway use | JVE8 | 2892290000 | 106.4F | 105.7F | 105.3F | 105.2F | 105.4F | 105.1F | 105.5pF | 106.4pF | .. |
| Machinery for sorting, grinding, mixing & similar treatment of earth, stone, ores & other mineral substances | JVE9 | 2892400000 | 103.1F | 102.8F | 106.5F | 106.4F | 106.6F | 106.4F | 106.6pF | 106.8pF | .. |
| Machinery for food, beverage & tobacco processing | JVF4 | 2893000000 | 165.3B | 165.3B | 165.9B | 165.9B | 165.9B | 165.9B | 165.9pB | 165.9pB | 153.5 |
| Machinery for textile, apparel & leather production | JVG2 | 2894000000 | 101.9B | 101.9B | 101.9B | 101.9B | 101.9B | 101.9B | 101.9pB | 102.8pB | 100.3 |
| Machinery for paper & paperboard production | K33J | 2895000000 | 104.6F | 104.7F | 104.7F | 104.7F | 104.7F | 104.7F | 104.7pF | 104.7pF | 102.7 |

For B and F see notes

4 Price indices of products manufactured in the United Kingdom (SIC07)

continued

Producer Prices Index: 2005=100, SIC2007

| | | | 2010 Mar | 2010 Apr | 2010 May | 2010 Jun | 2010 Jul | 2010 Aug | 2010 Sep | 2010 Oct | Annual Average ¹ 2009 |
|--|------|------------|-------------|-------------|-------------|-------------|-------------|-------------|-------------|-------------|--|
| Transport equipment | | | | | | | | | | | |
| Motor vehicles | JVH7 | 2910000000 | 111.8 | 112.0 | 112.0 | 112.4 | 112.4 | 112.5 | 112.5p | 112.6p | 110.0 |
| Vehicles with spark-ignition engine of a cylinder capacity up to & including 1500 cm ³ , new | JVH9 | 2912010000 | 104.5F | 104.5F | 104.5F | 104.5F | 104.5F | 104.5F | 104.6pF | 105.1pF | 103.6 |
| Vehicles with spark-ignition engine of a cylinder capacity >1500 cm ³ , new | JVI2 | 2910220000 | 114.4 | 115.2 | 115.0 | 115.3 | 115.3 | 115.3 | 115.4p | 115.4p | 112.6 |
| Vehicles with compression-ignition internal combustion piston engine (diesel or semi-diesel), new | JVI3 | 2910230000 | 102.6 | 101.7 | 101.7 | 102.0 | 102.1 | 102.2 | 102.3p | 102.3p | 101.6 |
| Special-purpose motor vehicles nec | JVI7 | 2910590000 | 102.7F | 102.7F | 102.7F | 102.8F | 101.5F | 101.5F | 101.5pF | 101.5pF | .. |
| Bodies (coachwork) for motor vehicles; trailers & semi-trailers | K33Q | 2920000000 | 115.8 | 115.9 | 115.7 | 116.0 | 115.5 | 115.3 | 115.9p | 116.4p | 113.2 |
| Bodies for motor vehicles | JVI8 | 2920100000 | 110.6 | 111.5 | 110.8 | 112.2 | 112.6 | 112.1 | 111.9p | 111.9p | 108.2 |
| Trailers & semi-trailers of the caravan type, for housing or camping | JVI9 | 2920220000 | 112.1 | 112.1 | 112.1 | 112.1 | 112.1 | 112.0 | 114.6p | 115.4p | 110.6 |
| Other trailers & semi-trailers | JVJ2 | 2920230000 | 117.2B | 117.2B | 117.6B | 117.6B | 117.7B | 117.7B | 117.7pB | 118.2pB | .. |
| Electrical & electronic equipment for motor vehicles | JVJ4 | 2931000000 | 108.6 | 106.8 | 105.5 | 103.6 | 104.2 | 103.4 | 104.5p | 106.9p | 102.1 |
| Other parts & accessories for motor vehicles | K33S | 2932000000 | 109.9 | 109.2 | 108.1 | 107.5 | 107.8 | 107.2 | 107.9p | 109.9p | 108.7 |
| Safety seat belts, airbags & parts & accessories of bodies | JVK2 | 2932200000 | 106.5 | 105.4 | 103.9 | 103.8 | 104.1 | 103.5 | 104.4p | 105.5p | 106.2 |
| Parts & accessories nec, for motor vehicles | JVK3 | 2932300000 | 113.3 | 113.1 | 112.6 | 111.4 | 111.6 | 111.1 | 111.6p | 114.5p | 111.0 |
| Railway locomotives & rolling stock | K33U | 3020000000 | 105.1B | 105.0B | 105.0B | 105.1B | 105.3B | 105.1B | 105.1pB | 105.1pB | .. |
| Air & spacecraft & related machinery | K33V | 3030000000 | 111.1 | 111.8 | 111.9 | 112.0 | 111.8 | 112.1 | 112.1p | 112.6p | 109.8 |
| Manufacture, repair, maintenance & installation of air & spacecraft and related machinery | JVL7 | 3030990000 | 113.7 | 113.6 | 113.8 | 114.1 | 113.9 | 113.8 | 113.9p | 114.4p | .. |
| Bicycles & invalid carriages | JVM3 | 3092000000 | 108.3F | 108.3F | 108.3F | 108.3F | 108.3F | 108.3F | 108.3pF | 108.4pF | 106.1 |
| Furniture & other manufacturing nec | | | | | | | | | | | |
| Seats & parts thereof; parts of furniture | JVM9 | 3100000000 | 108.5 | 108.9 | 109.2 | 109.5 | 109.7 | 109.7 | 109.6p | 109.7p | 105.5 |
| Seats, primarily with metal frames | JVN2 | 3100110000 | 107.1 | 109.7 | 111.3 | 113.0 | 114.0 | 114.3 | 114.3p | 114.3p | 105.3 |
| Seats, primarily with wooden frames | K33Z | 3100120000 | 108.1 | 108.1 | 108.2 | 108.3 | 108.3 | 108.3 | 108.2p | 108.2p | 104.3 |
| Office & shop furniture | K342 | 3101000000 | 106.6 | 104.9 | 104.9 | 106.4 | 107.2 | 107.3 | 107.4p | 107.5p | 107.1 |
| Wooden furniture for shops | JVN7 | 3101130000 | 102.9F | 100.1F | 100.1F | 102.6F | 103.8F | 104.0F | 104.0pF | 104.0pF | .. |
| Kitchen furniture | JVN8 | 3102000000 | 107.5 | 107.5 | 107.5 | 110.6 | 111.4 | 111.4 | 111.4p | 110.3p | 106.6 |
| Mattresses | JVO2 | 3103000000 | 106.5 | 106.5 | 106.5 | 106.9 | 106.6 | 106.9 | 107.2p | 114.8p | 109.6 |
| Other furniture | JVO4 | 3109000000 | 113.5 | 113.8 | 113.8 | 113.8 | 114.8 | 114.8 | 114.9p | 114.9p | 110.9 |
| Metal furniture nec | K344 | 3109110000 | 96.6 | 97.8 | 97.9 | 97.8 | 98.3 | 98.5 | 98.4p | 98.5p | .. |
| Wooden furniture of a kind used in the dining room & in the living room | JVO5 | 3109120000 | 118.4 | 118.4 | 118.4 | 118.4 | 118.4 | 118.4 | 118.7p | 118.7p | 114.7 |
| Jewellery & related articles | JVO9 | 3212000000 | 163.7 | 171.2 | 176.3 | 182.0 | 182.0 | 178.9 | 177.9p | 183.0p | 150.0 |
| Musical instruments | JVP5 | 3220000000 | 120.6F | 120.6F | 122.8F | 123.1F | 123.1F | 123.1F | 123.1pF | 123.1pF | 110.8 |
| Sports goods | JVP8 | 3230000000 | 110.9 | 111.0 | 111.0 | 111.0 | 111.0 | 110.9 | 111.0p | 111.0p | 109.1 |
| Other articles & equipment for sports or outdoor games; swimming pools & paddling pools | K347 | 3230150000 | 110.0F | 110.0F | 110.0F | 110.0F | 110.0F | 110.0F | 110.0pF | 110.0pF | 108.1 |
| Medical & dental instruments & supplies | JVQ6 | 3250000000 | 107.6 | 107.6 | 107.5 | 107.5 | 107.5 | 107.4 | 107.6p | 107.6p | 106.5 |
| Syringes, needles, catheters, cannulae & the like | JVQ8 | 3250130000 | 111.3 | 111.3 | 111.3 | 111.3 | 111.3 | 111.3 | 111.3p | 111.3p | 110.0 |
| Artificial joints; orthopaedic appliances; artificial teeth; dental fittings; artificial parts of the body nec | JVR2 | 3250220000 | 105.1 | 105.4 | 103.6 | 103.6 | 103.6 | 103.6 | 105.4p | 105.4p | 102.2 |

For B and F see notes

4 Price indices of products manufactured in the United Kingdom (SIC07)

continued

Producer Prices Index: 2005=100, SIC2007

| | | | 2010 Mar | 2010 Apr | 2010 May | 2010 Jun | 2010 Jul | 2010 Aug | 2010 Sep | 2010 Oct | Annual Average ¹ 2009 |
|---|------|------------|-------------|-------------|-------------|-------------|-------------|-------------|-------------|-------------|--|
| Medical, surgical, dental or veterinary furniture barbers' chairs & similar chairs & parts thereof | K349 | 3250300000 | 114.5F | 114.5F | 114.5F | 114.5F | 114.5F | 114.5F | 114.5pF | 114.5pF | .. |
| Contact lenses; spectacle lenses of any material | JVR3 | 3250410000 | 101.3F | 101.3F | 101.3F | 101.3F | 101.3F | 101.3F | 101.3pF | 101.3pF | 101.4 |
| Brooms & Brushes | K34A | 3291000000 | 119.0F | 119.0F | 119.0F | 119.0F | 121.4F | 121.7F | 121.7pF | 121.7pF | 118.5 |
| Other manufactured goods nec | JVR8 | 3299000000 | 113.1 | 113.1 | 114.8 | 114.9 | 114.9 | 114.9 | 114.9p | 114.9p | 111.8 |
| Other miscellaneous articles nec | K34D | 3299590000 | 123.9 | 123.9 | 127.5 | 127.5 | 127.5 | 127.5 | 127.5p | 127.5p | 120.8 |
| Repair services of electronic & optical equipment | K34G | 3313000000 | 104.8F | 104.8F | 104.8F | 104.8F | 106.0F | 106.0F | 106.0pF | 106.0pF | .. |
| Repair & maintenance services of ships & boats | K34H | 3315000000 | 118.5 | 118.5 | 118.5 | 119.2 | 119.7 | 119.7 | 119.7p | 119.7p | 116.0 |
| Repair & maintenance services of air & spacecraft | JVV7 | 3316000000 | 134.2 | 133.3 | 137.3 | 136.9 | 135.2 | 134.1 | 133.9p | 133.0p | 122.8 |
| Repair & maintenance services of other transport equipment | JVV9 | 3317000000 | 149.1 | 149.1 | 151.2 | 151.2 | 151.5 | 145.8 | 145.5p | 145.5p | 117.0 |
| Repair & maintenance services of railway locomotives & rolling stock | JVV2 | 3317110000 | 149.1 | 149.1 | 151.2 | 151.2 | 151.5 | 145.8 | 145.5p | 145.5p | 117.0 |
| Installation services of industrial machinery & equipment | JVV4 | 3320000000 | 101.0 | 101.0 | 101.0 | 100.8 | 100.8 | 100.8 | 100.8p | 101.4p | 105.8 |
| Installation services of industrial process control equipment | K34K | 3320600000 | 107.3 | 107.3 | 107.3 | 107.3 | 107.3 | 107.3 | 107.3p | 109.4p | .. |

For B and F see notes

5 Price indices of commodities imported into the United Kingdom (SIC2007)

Producer Prices Index: 2005=100, SIC2007

| | | | 2010 Mar | 2010 Apr | 2010 May | 2010 Jun | 2010 Jul | 2010 Aug | 2010 Sep | 2010 Oct | Annual Average ¹ 2009 |
|--|------|------------|-------------|-------------|-------------|-------------|-------------|-------------|-------------|-------------|--|
| Food & beverages | | | | | | | | | | | |
| Food Products - EU | K3KS | 8112100100 | 140.7B | 139.7B | 138.4B | 137.8B | 139.0B | 137.9B | 138.4pB | 140.6pB | 137.5 |
| Food products - NEU | K3KT | 8112100200 | 151.3 | 150.9 | 155.4 | 152.2 | 150.8 | 150.3 | 152.5p | 153.8p | 145.4 |
| Processed & preserved meat - EU | K3FA | 8101100100 | 136.1B | 135.7B | 138.4B | 140.5B | 139.1B | 135.5B | 133.6pB | 135.3pB | 136.9 |
| Processed & preserved meat - NEU | K3FB | 8101100200 | 151.8B | 166.2B | 174.6B | 174.0B | 172.9B | 169.5B | 173.4pB | 173.9pB | 123.8 |
| Processed & preserved poultry meat - EU | K3FQ | 8101200100 | 125.5B | 125.5B | 126.7B | 122.6B | 128.1B | 127.5B | 128.1pB | 128.1pB | 125.6 |
| Meat & poultry meat products - EU | K3FY | 8101300100 | 148.5B | 148.7B | 144.6B | 141.3B | 142.1B | 141.5B | 144.4pB | 145.0pB | 145.5 |
| Processed & preserved fish, crustaceans & molluscs - EU | K3G8 | 8102000100 | 133.6B | 130.6B | 129.1B | 132.3B | 133.2B | 132.9B | 133.8pB | 137.8pB | 123.9 |
| Processed & preserved fish, crustaceans & molluscs - NEU | K3G9 | 8102000200 | 128.6B | 126.4B | 130.7B | 132.2B | 136.7B | 134.6B | 134.6pB | 135.0pB | 126.5 |
| Fruit & vegetable juices - EU | K3GJ | 8103200100 | 135.9 | 131.9 | 129.9 | 125.8 | 127.1 | 125.4 | 128.3p | 133.5p | 127.8 |
| Processed & preserved fruit & vegetables - EU | K3GT | 8103900100 | 147.4B | 147.1B | 147.1B | 149.5B | 149.6B | 150.3B | 147.7pB | 150.6pB | 148.8 |
| Processed & preserved fruit & vegetables - NEU | K3GU | 8103900200 | 130.3B | 120.4B | 123.6B | 116.5B | 116.4B | 120.6B | 117.0pB | 118.6pB | 120.4 |
| Oils & fats - EU | K3H4 | 8104100100 | 171.3B | 168.5B | 164.5B | 162.1B | 162.2B | 164.6B | 170.0pB | 175.6pB | 167.3 |
| Oils & fats - NEU | K3H5 | 8104100200 | 245.0B | 242.3B | 240.2B | 235.8B | 213.6B | 218.8B | 228.0pB | 230.7pB | 235.1 |
| Dairy & cheese products - EU | K3HV | 8105100100 | 118.8B | 118.1B | 116.6B | 115.7B | 120.7B | 118.4B | 116.6pB | 117.9pB | 115.0 |
| Grain mill products - EU | K3I6 | 8106100100 | 175.3B | 175.6B | 175.3B | 173.6B | 173.9B | 173.5B | 174.3pB | 176.6pB | 177.5 |
| Cocoa, chocolate & sugar confectionery - EU | K3IU | 8108200100 | 134.6B | 134.1B | 133.9B | 138.4B | 139.3B | 138.6B | 139.6pB | 140.4pB | 131.1 |
| Cocoa, chocolate & sugar confectionery - NEU | K3IV | 8108200200 | 135.9B | 136.5B | 145.2B | 138.7B | 142.6B | 140.4B | 130.3pB | 126.2pB | .. |
| Processed tea & coffee - NEU | K3J6 | 8108300200 | 152.5B | 153.7B | 157.2B | 155.9B | 154.6B | 153.9B | 175.8pB | 180.4pB | 138.2 |
| Beverages - EU | K3KU | 8112110100 | 127.3B | 126.8B | 126.3B | 124.2B | 125.1B | 124.5B | 125.3pB | 128.3pB | 125.3 |
| Beverages - NEU | K3KV | 8112110200 | 86.3B | 85.8B | 86.3B | 85.9B | 88.4B | 88.7B | 88.8pB | 89.3pB | 85.1 |
| Wine from grape - EU | K3K7 | 8110200100 | 130.7B | 129.9B | 129.6B | 127.3B | 128.3B | 127.7B | 129.0pB | 132.4pB | 129.0 |
| Wine from grape - NEU | K3K8 | 8110200200 | 75.9B | 75.9B | 75.9B | 75.9B | 79.5B | 80.5B | 80.2pB | 80.2pB | .. |
| Textiles | | | | | | | | | | | |
| Textiles - EU | K3KY | 8112130100 | 121.2B | 120.2B | 119.2B | 118.1B | 118.8B | 118.4B | 119.9pB | 122.2pB | 120.2 |
| Textiles - NEU | K3KZ | 8112130200 | 128.8B | 127.6B | 131.2B | 132.4B | 131.1B | 131.2B | 133.3pB | 133.1pB | 118.1 |
| Textile yarn & thread - EU | K3M7 | 8131000100 | 112.2B | 114.2B | 112.8B | 113.9B | 114.5B | 113.0B | 113.8pB | 115.7pB | 115.1 |
| Textile yarn & thread - NEU | K3M8 | 8131000200 | 141.9B | 145.4B | 152.4B | 155.3B | 151.6B | 159.2B | 167.2pB | 168.7pB | 112.0 |
| Woven textiles - EU | K3MQ | 8132000100 | 123.8B | 120.2B | 118.7B | 116.6B | 118.2B | 117.2B | 119.8pB | 122.8pB | 121.2 |
| Woven textiles - Non EU | K3MR | 8132000200 | 121.3B | 118.8B | 121.2B | 122.8B | 126.2B | 124.8B | 126.8pB | 126.0pB | 114.5 |
| Made-up textile articles, except apparel - NEU | K3NB | 8139200200 | 129.2B | 128.5B | 132.0B | 132.5B | 130.4B | 130.3B | 131.9pB | 131.9pB | 117.2 |
| Carpets & rugs - EU | K3NK | 8139300100 | 128.7B | 128.2B | 128.2B | 127.7B | 127.7B | 127.5B | 128.8pB | 130.3pB | 126.6 |
| Other technical & industrial textiles - EU | K3O3 | 8139600100 | 118.3B | 115.7B | 113.0B | 110.8B | 111.3B | 109.9B | 111.8pB | 115.8pB | 123.2 |
| Other technical & industrial textiles - NEU | K3O4 | 8139600200 | 158.1B | 156.7B | 163.0B | 162.9B | 157.8B | 156.4B | 153.8pB | 153.6pB | .. |

1 Average index value for the calendar year January to December 2009.

EU - Imported within the European Union.
NEU - Imported outside the European Union.

For B and F see notes.

5 Price indices of commodities imported into the United Kingdom (SIC2007)

continued

Producer Prices Index: 2005=100, SIC2007

| | | | 2010 Mar | 2010 Apr | 2010 May | 2010 Jun | 2010 Jul | 2010 Aug | 2010 Sep | 2010 Oct | Annual Average ¹ 2009 |
|--|------|------------|-------------|-------------|-------------|-------------|-------------|-------------|-------------|-------------|--|
| Wood & wood products | | | | | | | | | | | |
| Wood & products of wood & cork, except furniture; articles of straw & plaiting materials - EU | K3L3 | 8112160100 | 136.1 | 137.3 | 139.8 | 140.6 | 143.1 | 144.5 | 146.8p | 148.3p | 122.7 |
| Wood & products of wood & cork, except furniture; articles of straw & plaiting materials - NEU | K3L4 | 8112160200 | 117.5B | 119.6B | 124.4B | 126.3B | 123.7B | 123.1 B | 122.5pB | 121.8pB | 115.1 |
| Wood, sawn & planed - EU | K3OI | 8161000100 | 148.3B | 151.2B | 155.8B | 157.7B | 162.1B | 164.4B | 164.7pB | 166.8pB | 127.6 |
| Wood, sawn & planed - NEU | K3OJ | 8161000200 | 125.2B | 133.9B | 137.1B | 143.8B | 144.1B | 144.3B | 143.5pB | 143.2pB | .. |
| Veneer sheets & wood-based panels - EU | K3OO | 8162100100 | 118.5B | 118.1B | 118.7B | 118.8B | 119.0B | 120.0B | 127.1pB | 127.5pB | 111.8 |
| Veneer sheets & wood-based panels - NEU | K3OP | 8162100200 | 95.0 | 92.2 | 101.4 | 100.8 | 96.2 | 94.0 | 91.9p | 90.3p | 90.0 |
| Other Builders' carpentry & joinery - EU | K3OZ | 8162300100 | 129.7B | 128.2B | 127.3B | 126.4B | 126.7B | 126.4B | 126.1pB | 127.5pB | .. |
| Pulp, paper & paper products | | | | | | | | | | | |
| Paper & paper products - EU | K3L5 | 8112170100 | 120.8B | 121.1B | 122.3B | 123.1B | 124.7B | 124.2B | 126.0pB | 127.7pB | 117.8 |
| Paper & paperboard - EU | K3PL | 8171200100 | 114.5B | 115.0B | 117.0B | 118.5B | 118.5B | 118.2B | 120.0pB | 121.4pB | 112.8 |
| Household & sanitary goods & toilet requisites - EU | K3PX | 8172200100 | 141.6B | 143.4B | 142.8B | 140.2B | 141.0B | 139.7B | 141.3pB | 145.3pB | .. |
| Household & sanitary goods & toilet requisites - NEU | K3PY | 8172200200 | 91.2 | 90.9 | 91.2 | 90.4 | 88.9 | 87.9 | 88.7p | 89.3p | .. |
| Paper stationery - EU | K3Q6 | 8172300100 | 122.8B | 121.8B | 120.3B | 122.1B | 123.1B | 123.2B | 123.5pB | 126.8pB | 122.1 |
| Paper stationery - NEU | K3Q7 | 8172300200 | 122.5B | 122.3B | 122.7B | 122.6B | 121.8B | 121.6B | 121.7pB | 121.5pB | 124.1 |
| Chemicals & chemical products | | | | | | | | | | | |
| Chemicals & chemical products - EU | K3LA | 8112200100 | 138.5B | 137.9B | 137.9B | 134.8B | 135.4B | 135.6B | 136.9pB | 139.4pB | 130.6 |
| Chemicals & chemical products - NEU | K3LB | 8112200200 | 150.0B | 148.8B | 152.9B | 156.0B | 155.2B | 155.8B | 158.9pB | 160.6pB | 146.2 |
| Other inorganic basic chemicals - EU | K3R6 | 8201300100 | 197.7B | 196.1B | 196.1B | 195.8B | 203.0B | 203.7B | 205.3pB | 208.9pB | 183.8 |
| Other inorganic basic chemicals - NEU | K3R7 | 8201300200 | 168.1B | 169.2B | 188.1B | 201.1B | 206.2B | 211.7B | 217.3pB | 222.2pB | 165.6 |
| Other organic basic chemicals - EU | K3RM | 8201400100 | 139.9B | 141.6B | 143.9B | 139.1B | 137.2B | 138.0B | 139.3pB | 140.2pB | 133.2 |
| Other organic basic chemicals - NEU | K3RN | 8201400200 | 145.0B | 142.6B | 145.9B | 152.2B | 151.3B | 151.9B | 154.5pB | 155.4pB | 145.0 |
| Plastics in primary forms - EU | K3SK | 8201600100 | 139.1B | 140.1B | 142.8B | 142.3B | 143.5B | 142.6B | 142.7pB | 145.4pB | 121.4 |
| Plastics in primary forms - NEU | K3SL | 8201600200 | 130.9B | 131.2B | 137.4B | 133.0B | 133.7B | 131.5B | 133.0pB | 132.5pB | 118.2 |
| Perfumes & toilet preparations - EU | K3TM | 8204200100 | 117.4B | 115.7B | 114.9B | 113.3B | 113.2B | 113.4B | 114.5pB | 117.4pB | 115.3 |
| Perfumes & toilet preparations - NEU | K3TN | 8204200200 | 108.7 | 109.3 | 111.7 | 111.5 | 104.8 | 107.0 | 106.1p | 106.2p | .. |
| Other chemical products nec - EU | K3U3 | 8205900100 | 135.8B | 133.0B | 131.7B | 129.6B | 130.7B | 129.9B | 131.1pB | 132.9pB | 131.1 |
| Other chemical products nec - NEU | K3U4 | 8205900200 | 160.5B | 157.7B | 155.8B | 152.8B | 153.4B | 152.1B | 157.5pB | 161.6pB | 158.3 |
| Basic pharmaceutical products | | | | | | | | | | | |
| Basic pharmaceutical products & pharmaceutical preparations - EU | K3LC | 8112210100 | 121.9B | 123.4B | 122.1B | 120.9B | 118.4B | 120.6B | 118.2pB | 119.4pB | 119.7 |
| Basic pharmaceutical products & pharmaceutical preparations - NEU | K3LD | 8112210200 | 101.2B | 100.5B | 102.9B | 103.1B | 102.3B | 104.9B | 103.0pB | 102.8pB | 109.7 |
| Basic pharmaceutical products - NEU | K3UR | 8211000200 | 96.1B | 94.6B | 104.9B | 104.2B | 101.1B | 99.1B | 92.3pB | 90.8pB | .. |
| Pharmaceutical preparations - NEU | K3UV | 8212000200 | 102.7B | 102.3B | 102.3B | 102.8B | 102.7B | 106.6B | 106.3pB | 106.5pB | .. |
| Rubber & plastic products | | | | | | | | | | | |
| Rubber & plastics products - EU | K3LE | 8112220100 | 127.5B | 126.3B | 127.7B | 126.9B | 127.7B | 127.2B | 127.9pB | 130.2pB | 121.4 |
| Rubber & plastics products - NEU | K3LF | 8112220200 | 109.6B | 109.3B | 110.9B | 112.1B | 111.6B | 110.9B | 112.2pB | 114.9pB | 108.4 |
| Rubber tyres & tubes; retreading & rebuilding of rubber tyres - EU | K3V4 | 8221100100 | 118.8B | 118.9B | 119.1B | 118.5B | 119.8B | 119.6B | 120.0pB | 120.4pB | 118.6 |
| Rubber tyres & tubes; retreading & rebuilding of rubber tyres - NEU | K3V5 | 8221100200 | 127.0B | 128.8B | 130.8B | 135.9B | 134.8B | 133.2B | 135.7pB | 141.2pB | 128.0 |

¹ Average index value for the calendar year January to December 2009.

EU - Imported within the European Union.
NEU - Imported outside of the European Union.

5 Price indices of commodities imported into the United Kingdom (SIC2007)

continued

Producer Prices Index: 2005=100, SIC2007

| | | | 2010 Mar | 2010 Apr | 2010 May | 2010 Jun | 2010 Jul | 2010 Aug | 2010 Sep | 2010 Oct | Annual Average ¹ 2009 |
|--|------|------------|-------------|-------------|-------------|-------------|-------------|-------------|-------------|-------------|--|
| Other rubber products - EU | K3VA | 8221900100 | 105.5B | 102.8B | 100.8B | 99.3B | 100.1B | 98.9B | 100.6pB | 103.6pB | 101.1 |
| Other rubber products - NEU | K3VB | 8221900200 | 88.3B | 87.2B | 87.9B | 87.0B | 86.4B | 86.2B | 86.9pB | 88.9pB | 88.2 |
| Plastic plates, sheets, tubes & profiles - EU | K3VK | 8222100100 | 135.3B | 132.7B | 137.2B | 137.2B | 138.1B | 137.4B | 137.5pB | 139.6pB | 123.9 |
| Plastic plates, sheets, tubes & profiles - NEU | K3VL | 8222100200 | 122.9B | 122.2B | 126.3B | 129.1B | 129.5B | 129.6B | 132.2pB | 139.2pB | .. |
| Other plastic products - EU | K3VU | 8222900100 | 136.4B | 136.8B | 136.5B | 134.6B | 134.8B | 134.8B | 136.0pB | 140.1pB | 132.0 |
| Other non-metallic mineral products | | | | | | | | | | | |
| Other non-metallic mineral products - EU | K3LG | 8112230100 | 123.1B | 121.6B | 120.5B | 118.8B | 119.4B | 119.4B | 120.3pB | 122.4pB | 125.2 |
| Other non-metallic mineral products - NEU | K3LH | 8112230200 | 115.2B | 112.9B | 113.6B | 113.2B | 111.8B | 111.3B | 112.3pB | 112.5pB | 115.4 |
| Shaped & processed flat glass - EU | K3VZ | 8231200100 | 95.9B | 98.4B | 98.2B | 97.8B | 97.9B | 101.6B | 101.8pB | 101.8pB | 98.8 |
| Hollow glass - EU | K3W6 | 8231300100 | 115.4B | 115.2B | 114.8B | 115.0B | 114.1B | 114.2B | 114.3pB | 114.7pB | 111.5 |
| Hollow glass - NEU | K3W7 | 8231300200 | 85.8B | 85.3B | 87.4B | 89.2B | 87.5B | 86.5B | 86.7pB | 86.3pB | .. |
| Ceramic tiles & flags - EU | K3WH | 8233100100 | 139.9B | 138.1B | 136.8B | 134.8B | 135.4B | 134.6B | 134.7pB | 136.9pB | .. |
| Ceramic household & ornamental articles - NEU | K3WM | 8234100200 | 116.1B | 114.3B | 116.8B | 118.1B | 116.4B | 115.3B | 117.4pB | 115.8pB | .. |
| Cut, shaped & finished stone - EU | K3WS | 8237000100 | 126.2B | 124.7B | 125.3B | 123.3B | 124.2B | 123.4B | 125.7pB | 127.4pB | 128.1 |
| Cut, shaped & finished stone - NEU | K6DQ | 8237000200 | 129.1 | 129.4 | 133.7 | 134.0 | 133.7 | 132.8 | 132.1p | 134.8p | .. |
| Basic metals | | | | | | | | | | | |
| Basic metals - EU | K3LI | 8112240100 | 138.1B | 144.2B | 146.2B | 142.8B | 142.5B | 141.8B | 144.8pB | 149.2pB | 125.0 |
| Basic metals - NEU | K3LJ | 8112240200 | 197.4B | 209.6B | 212.2B | 202.2B | 195.9B | 197.5B | 207.3pB | 212.4pB | 158.6 |
| Basic iron and steel & of ferro-alloys - EU | K3X4 | 8241000100 | 128.6B | 137.5B | 139.9B | 136.1B | 138.8B | 136.6B | 137.7pB | 142.8pB | 114.0 |
| Basic iron and steel & of ferro-alloys - NEU | K3X5 | 8241000200 | 212.9B | 236.8B | 231.0B | 211.5B | 206.9B | 214.7B | 223.9pB | 226.0pB | 155.5 |
| Tubes, pipes, hollow profiles & related fittings, of steel - EU | K3XN | 8242000100 | 138.0B | 138.3B | 139.0B | 138.3B | 139.6B | 141.9B | 139.8pB | 143.4pB | 139.0 |
| Tubes, pipes, hollow profiles & related fittings, of steel - NEU | K3XO | 8242000200 | 169.1B | 170.1B | 177.0B | 191.3B | 187.0B | 171.8B | 172.6pB | 166.6pB | 164.5 |
| Aluminium - EU | K3YI | 8244200100 | 116.2B | 120.8B | 122.4B | 117.5B | 114.5B | 114.3B | 116.8pB | 118.9pB | 122.2 |
| Aluminium - NEU | K3YJ | 8244200200 | 131.9B | 133.4B | 135.6B | 132.3B | 129.1B | 130.6B | 132.6pB | 136.2pB | 116.7 |
| Copper - EU | K3Z4 | 8244400100 | 211.0B | 220.2B | 216.9B | 211.7B | 206.1B | 208.9B | 216.0pB | 225.7pB | 162.3 |
| Other non-ferrous metal - NEU | K3ZG | 8244500200 | 177.3B | 194.0B | 196.5B | 179.7B | 172.7B | 176.2B | 186.5pB | 188.3pB | 158.0 |
| Computer, electronic & optical products | | | | | | | | | | | |
| Computer, electronic & optical products - NEU | K3LN | 8112260200 | 115.4B | 114.5B | 116.5B | 119.8B | 117.2B | 114.0B | 114.1pB | 114.1pB | 110.0 |
| Computers & peripheral equipment - EU | K42B | 8262000100 | 86.8B | 86.6B | 89.0B | 88.5B | 86.7B | 85.5B | 85.7pB | 84.9pB | 82.3 |
| Computers & peripheral equipment - NEU | K42C | 8262000200 | 107.5B | 109.0B | 112.6B | 122.4B | 118.9B | 116.9B | 117.8pB | 116.8pB | 96.1 |
| Communication equipment - NEU | K42O | 8263000200 | 115.1 | 113.0 | 115.1 | 113.7 | 111.8 | 109.9 | 111.1p | 113.1p | 114.2 |
| Consumer electronics - EU | K42X | 8264000100 | 83.6B | 85.6B | 85.8B | 85.4B | 85.6B | 85.3B | 85.7pB | 86.1pB | 94.8 |
| Consumer electronics - NEU | K42Y | 8264000200 | 123.0B | 120.9B | 125.3B | 122.9B | 119.6B | 117.5B | 114.2pB | 112.8pB | 120.7 |
| Measuring, testing & navigating equipment - EU | K43D | 8265100100 | 144.9B | 143.4B | 142.8B | 141.5B | 141.8B | 141.1B | 142.0pB | 144.2pB | 144.1 |
| Measuring, testing & navigating equipment - NEU | K43E | 8265100200 | 118.9B | 117.3B | 120.5B | 120.3B | 117.5B | 115.7B | 116.3pB | 115.8pB | 113.1 |

¹ Average index value for the calendar year January to December 2009.

EU - Imported within the European Union.
NEU - Imported outside of the European Union.

For B and F see notes.

5 Price indices of commodities imported into the United Kingdom (SIC2007)

continued

Producer Prices Index: 2005=100, SIC2007

| | | | 2010 Mar | 2010 Apr | 2010 May | 2010 Jun | 2010 Jul | 2010 Aug | 2010 Sep | 2010 Oct | Annual Average ¹ 2009 |
|--|------|------------|-------------|-------------|-------------|-------------|-------------|-------------|-------------|-------------|--|
| Electrical equipment | | | | | | | | | | | |
| Electrical equipment - EU | K3LO | 8112270100 | 120.9B | 119.5B | 119.1B | 117.7B | 118.4B | 117.6B | 118.4pB | 120.7pB | 120.9 |
| Electrical equipment - NEU | K3LP | 8112270200 | 130.2B | 129.2B | 132.9B | 132.2B | 129.3B | 127.6B | 129.1pB | 130.4pB | 125.0 |
| Electric motors, generators & transformers - EU | K44K | 8271100100 | 127.1B | 126.0B | 126.1B | 124.7B | 127.0B | 126.2B | 127.0pB | 128.7pB | 127.6 |
| Electric motors, generators & transformers - NEU | K44L | 8271100200 | 116.6B | 114.5B | 118.6B | 117.9B | 114.0B | 111.5B | 112.1pB | 110.2pB | 112.6 |
| Electricity distribution & control apparatus - EU | K44T | 8271200100 | 121.8B | 119.6B | 117.8B | 115.1B | 115.6B | 114.4B | 115.4pB | 119.4pB | 122.0 |
| Wiring devices - EU | K45B | 8273300100 | 129.7B | 128.6B | 130.5B | 129.8B | 128.4B | 128.2B | 128.9pB | 129.2pB | 121.1 |
| Wiring devices - NEU | K45C | 8273300200 | 140.8B | 144.5B | 146.9B | 146.0B | 144.0B | 143.4B | 145.8pB | 145.2pB | 137.3 |
| Electric domestic appliances - EU | K45O | 8275100100 | 117.8 | 116.5 | 115.8 | 114.6 | 114.9 | 114.2 | 114.4p | 116.4p | 116.5 |
| Electric domestic appliances - NEU | K45P | 8275100200 | 110.3 | 108.8 | 112.4 | 112.6 | 111.7 | 110.6 | 114.6p | 119.6p | 112.2 |
| Other electrical equipment - EU | K469 | 8279000100 | 114.6B | 113.6B | 112.7B | 111.4B | 111.8B | 111.3B | 112.1pB | 114.5pB | 113.5 |
| Other electrical equipment - NEU | K46A | 8279000200 | 130.0B | 128.2B | 132.8B | 132.1B | 129.7B | 127.8B | 128.5pB | 129.4pB | 127.2 |
| Machinery & equipment | | | | | | | | | | | |
| Machinery & equipment nec - EU | K3LQ | 8112280100 | 137.3B | 135.5B | 134.1B | 131.8B | 133.3B | 132.4B | 133.7pB | 136.6pB | 133.7 |
| Machinery & equipment nec - NEU | K3LR | 8112280200 | 127.7B | 126.7B | 129.9B | 129.5B | 127.9B | 126.6B | 127.6pB | 128.4pB | 121.0 |
| Other pumps & compressors - EU | K46Q | 8281300100 | 148.1B | 144.6B | 144.2B | 140.2B | 141.6B | 140.5B | 142.6pB | 145.9pB | 146.3 |
| Other general-purpose machinery nec - EU | K47L | 8282900100 | 150.8B | 150.2B | 147.4B | 143.7B | 145.0B | 143.2B | 145.2pB | 153.5pB | 144.9 |
| Other general-purpose machinery nec - NEU | K47M | 8282900200 | 123.1B | 122.4B | 123.3B | 122.8B | 122.2B | 119.6B | 119.8pB | 120.1pB | 103.8 |
| Agricultural & forestry machinery - EU | K47Y | 8283000100 | 134.1B | 130.3B | 128.9B | 126.7B | 127.4B | 126.6B | 127.8pB | 130.7pB | 130.6 |
| Agricultural & forestry machinery - NEU | K47Z | 8283000200 | 124.0 | 122.2 | 126.0 | 125.1 | 122.4 | 120.4 | 121.0p | 121.1p | 118.9 |
| Machinery for mining, quarrying & construction - EU | K48U | 8289200100 | 146.1 | 143.9 | 143.2 | 140.8 | 145.5 | 144.5 | 146.1p | 146.2p | 138.0 |
| Machinery for mining, quarrying & construction - NEU | K48V | 8289200200 | 162.0B | 160.9B | 165.0B | 163.7B | 162.6B | 163.0B | 163.4pB | 165.2pB | 155.3 |
| Other special-purpose machinery nec - EU | K4A6 | 8289900100 | 129.0B | 128.0B | 127.2B | 125.8B | 126.6B | 125.8B | 126.6pB | 128.7pB | 128.8 |
| Other special-purpose machinery nec - NEU | K4A7 | 8289900200 | 114.4B | 113.1B | 117.0B | 116.2B | 114.0B | 112.1B | 112.7pB | 113.5pB | 111.4 |
| Transport equipment | | | | | | | | | | | |
| Motor vehicles, trailers & semi-trailers - EU | K3LS | 8112290100 | 112.3 | 111.7 | 110.1 | 109.3 | 110.4 | 109.6 | 110.4p | 112.2p | 107.9 |
| Motor vehicles, trailers & semi-trailers - NEU | K3LT | 8112290200 | 126.3B | 125.7B | 129.5B | 129.8B | 130.5B | 130.2B | 132.3pB | 133.8pB | 120.6 |
| Motor vehicles - EU | K4AI | 8291000100 | 104.2 | 104.7 | 103.0 | 102.6 | 104.1 | 103.6 | 104.0p | 105.0p | 102.5 |
| Other parts & accessories for motor vehicles - EU | K4BD | 8293200100 | 140.9 | 136.9 | 135.2 | 132.6 | 132.9 | 130.6 | 133.0p | 137.7p | 126.1 |
| Other parts & accessories for motor vehicles - NEU | K4BE | 8293200200 | 126.0 | 122.2 | 127.6 | 127.4 | 129.8 | 129.4 | 132.3p | 132.4p | 123.8 |
| Other transport equipment | | | | | | | | | | | |
| Other transport equipment - EU | K3LU | 8112300100 | 117.7B | 138.9B | 138.7B | 138.2B | 138.5B | 138.3B | 139.3pB | 139.8pB | 113.9 |
| Other transport equipment - NEU | K3LV | 8112300200 | 140.5B | 139.4B | 142.8B | 142.1B | 139.1B | 138.1B | 138.8pB | 138.5pB | 130.3 |
| Other manufactured goods | | | | | | | | | | | |
| Other manufactured goods - EU | K3LX | 8112320100 | 110.0B | 114.6B | 113.8B | 112.4B | 112.9B | 112.3B | 113.1pB | 113.4pB | 108.6 |
| Other manufactured goods - NEU | K3LY | 8112320200 | 156.5B | 153.5B | 160.7B | 159.5B | 154.2B | 155.5B | 160.4pB | 157.9pB | 149.6 |

¹ Average index value for the calendar year January to December 2009.

EU - Imported within the European Union.
NEU - Imported outside of the European Union.

For B and F see notes.

6 Price indices of goods exported from the United Kingdom - SIC 2007

Export Prices Index: 2005=100, SIC2007

| | | | 2010 Mar | 2010 Apr | 2010 May | 2010 Jun | 2010 Jul | 2010 Aug | 2010 Sep | 2010 Oct | Annual Average ¹ 2009 |
|---|------|------------|-------------|-------------|-------------|-------------|-------------|-------------|-------------|-------------|--|
| Food & beverages | | | | | | | | | | | |
| Processed & preserved meat - EU | JY4K | 0101100100 | 141.3F | 143.6F | 146.4F | 141.7F | 133.4F | 130.3F | 133.1pF | 136.6pF | 136.0 |
| Processed & preserved fish, crustaceans & molluscs - EU | JY4N | 0102000100 | 136.1 | 134.7 | 132.7 | 129.1 | 130.0 | 128.5 | 132.0p | 135.9p | 136.1 |
| Dairy & cheese products - EU | JY4W | 0105100100 | .. | .. | .. | 152.6F | 152.7F | 150.6F | 152.9pF | 153.4pF | .. |
| Grain mill products - EU | JY57 | 0106100100 | 147.3B | 143.3B | 140.4B | 136.1B | 137.4B | 135.6B | 138.1pB | 143.6pB | 146.9 |
| Grain mill products - NEU | JY58 | 0106100200 | 121.6B | 121.5B | 121.9B | 121.8B | 121.5B | 121.4B | 121.4pB | 121.4pB | 120.5 |
| Bread; fresh pastry goods & cakes - EU | JY5D | 0107100100 | 106.3B | 104.8B | 104.4B | 101.9F | 103.1F | 103.5F | 104.9pF | 105.7pF | 107.2 |
| Rusks & biscuits; preserved pastry goods & cakes - EU | JY5I | 0107200100 | 133.9B | 130.9B | 127.4B | 124.3B | 122.8B | 121.5B | 123.2pB | 127.0pB | 133.7 |
| Rusks & biscuits; preserved pastry goods & cakes - NEU | JY5J | 0107200200 | 141.8F | 140.2F | 142.2F | 141.3F | 136.4F | 133.4F | 134.4pF | 133.3pF | 130.5 |
| Condiments & seasonings - EU | JY5U | 0108400100 | 120.6 | 117.3 | 115.0 | 111.5F | 112.6F | 111.0F | 113.2pF | 118.0pF | 125.4 |
| Condiments & seasonings - NEU | JY5V | 0108400200 | 108.2 | 107.9 | 108.6 | 110.3F | 109.8F | 109.5F | 109.6pF | 109.3pF | 111.3 |
| Other food products n.e.c - EU | JY62 | 0108900100 | 173.2B | 168.7B | 165.9B | 161.5B | 161.7B | 160.6B | 162.0pB | 165.9pB | 120.1 |
| Other food products n.e.c - NEU | JY63 | 0108900200 | 99.6 | 98.1 | 97.5 | 96.3 | 96.0 | 95.3 | 96.8p | 98.9p | 91.6 |
| Distilled alcoholic beverages - NEU | JY69 | 0110100200 | 127.7B | 128.1B | 127.9B | 127.7B | 127.7B | 128.1B | 128.1pB | 128.1pB | .. |
| Textiles & wearing apparel | | | | | | | | | | | |
| Textile yarn & thread - NEU | JY6N | 0131000200 | 129.3F | 128.6F | 136.7F | 134.7B | 138.4B | 136.4B | 139.7pB | 138.9pB | 119.2 |
| Woven textiles - EU | JY6U | 0132000100 | 124.3B | 123.0B | 121.0B | 118.5B | 119.7B | 118.8B | 120.9pB | 125.1pB | 125.8 |
| Woven textiles - NEU | JY6V | 0132000200 | 114.3B | 114.5B | 116.1B | 115.1B | 114.7B | 113.7B | 114.1pB | 114.3pB | 110.2 |
| Other technical & industrial textiles - NEU | JY75 | 0139600200 | 110.6B | 110.5B | 110.5B | 110.2 | 110.1 | 110.1 | 110.5p | 110.7p | 108.5 |
| Other textiles n.e.c - NEU | JY7A | 0139900200 | .. | .. | .. | 131.8F | 128.2F | 125.7F | 126.3pF | 124.6pF | .. |
| Other outerwear - EU | JY7H | 0141300100 | 112.6B | 109.3B | 107.0B | 103.0B | 104.1B | 102.8B | 104.2pB | 106.9pB | 114.7 |
| Underwear - EU | JY7M | 0141400100 | 136.2 | 132.6 | 130.7 | 126.9 | 128.1 | 126.5 | 128.6p | 133.5p | 129.8 |
| Underwear - NEU | JY7N | 0141400200 | 121.8F | 121.2F | 122.4F | 122.3F | 121.5F | 121.0F | 121.1pF | 136.1pF | 120.0 |
| Other wearing apparel & accessories n.e.c. - EU | JY7V | 0141900100 | 118.4B | 115.5B | 114.7B | 108.8B | 108.7B | 108.7B | 110.3pB | 113.4pB | 124.0 |
| Other wearing apparel & accessories n.e.c. - NEU | JY7W | 0141900200 | 122.3F | 121.8F | 123.2F | 125.8B | 125.6B | 125.6B | 125.6pB | 125.6pB | 121.1 |
| Other knitted & crocheted apparel - NEU | JY86 | 0143900200 | 145.7F | 144.2F | 148.1F | 147.2F | 146.4F | 143.8F | 144.3pF | 142.5pF | 142.8 |
| Footwear - EU | JY89 | 0152000100 | 121.9B | 119.8B | 118.3B | 115.9B | 116.6B | 115.6B | 117.4pB | 121.4pB | 120.4 |
| Footwear - NEU | JY8A | 0152000200 | 129.7B | 130.0B | 133.6B | 133.1B | 132.0B | 131.9B | 132.5pB | 131.2pB | 125.3 |
| Paper & paper products | | | | | | | | | | | |
| Paper & paperboard - EU | JY8J | 0171200100 | 137.3B | 135.0B | 134.2B | 132.2B | 133.0B | 132.1B | 133.2pB | 135.5pB | 139.0 |
| Corrugated paper & paperboard & containers of paper & paperboard - EU | JY8S | 0172100100 | 127.2B | 126.5B | 125.2B | 123.6B | 124.2B | 123.9B | 125.5pB | 128.0pB | 127.5 |
| Wallpaper - EU | JY95 | 0172400100 | .. | .. | .. | 132.7F | 134.2F | 132.3F | 134.8pF | 140.7pF | .. |
| Wallpaper - NEU | JY96 | 0172400200 | 115.9F | 114.1F | 115.3F | 113.4F | 114.1F | 113.2F | 133.1pF | 136.6pF | 113.6 |

¹ Average index value for the calendar year January to December 2009.

Source: Office for National Statistics

EU - Exported within the European Union.

NEU - Exported outside of the European Union.

For B and F see notes.

6 Price indices of goods exported from the United Kingdom - SIC 2007

continued

Export Prices Index: 2005=100, SIC2007

| | | | 2010 Mar | 2010 Apr | 2010 May | 2010 Jun | 2010 Jul | 2010 Aug | 2010 Sep | 2010 Oct | Annual Average ¹ 2009 |
|--|------|------------|-------------|-------------|-------------|-------------|-------------|-------------|-------------|-------------|--|
| Chemicals & chemical products | | | | | | | | | | | |
| Other organic based chemicals - EU | JY9V | 0201400100 | 135.9B | 133.2B | 132.6B | 132.5B | 130.9B | 127.7B | 130.0pB | 135.7pB | 130.1 |
| Other organic based chemicals - NEU | JY9W | 0201400200 | 136.7B | 141.7B | 147.6B | 147.3B | 145.7B | 142.1B | 140.0pB | 138.8pB | 122.3 |
| Plastics in primary forms - EU | JYC6 | 0201600100 | 124.2B | 120.6B | 121.1B | 124.4B | 125.3B | 123.9B | 123.5pB | 124.6pB | 121.2 |
| Plastics in primary forms - NEU | JYC7 | 0201600200 | 127.9B | 130.2B | 130.8B | 130.5B | 129.3B | 131.0B | 134.3pB | 137.5pB | 122.9 |
| Paints varnishes & similar coatings, printing inks & mastics - EU | JYE3 | 0203000100 | 123.9F | 119.0F | 117.0F | 114.6F | 115.7F | 114.9F | 117.2pF | 118.3pF | 122.6 |
| Paints varnishes & similar coatings, printing inks & mastics - NEU | JYE4 | 0203000200 | .. | .. | .. | 105.6B | 110.5B | 109.3B | 110.9pB | 112.8pB | .. |
| Soap & detergents, cleaning & polishing preparations - EU | JYF2 | 0204100100 | 152.5B | 151.5B | 148.8B | 144.7B | 146.0B | 144.1B | 147.7pB | 153.8pB | 157.4 |
| Soap & detergents, cleaning & polishing preparations - NEU | JYF3 | 0204100200 | 127.1B | 132.0B | 132.9B | 132.5B | 133.1B | 132.6B | 132.8pB | 132.5pB | 127.3 |
| Perfumes & toilet preparations - EU | JYG3 | 0204200100 | 124.5B | 122.2B | 121.9B | 119.5B | 120.9B | 120.3B | 120.9pB | 122.2pB | 122.0 |
| Perfumes & toilet preparations - NEU | JYG4 | 0204200200 | 106.1B | 105.8B | 108.2B | 108.0B | 107.6B | 107.3B | 106.9pB | 106.8pB | 104.6 |
| Glues - EU | JYI3 | 0205200100 | 124.2 | 122.3 | 120.5 | 118.6 | 119.6 | 116.8 | 118.6p | 123.0p | 122.9 |
| Glues - NEU | JYI4 | 0205200200 | 121.1 | 119.6 | 123.0 | 122.3 | 119.6 | 118.6 | 119.0p | 116.0p | 122.4 |
| Essential oils - EU | JYI7 | 0205300100 | 112.0 | 111.5 | 109.8 | 107.2 | 108.1 | 108.5 | 110.0p | 112.0p | 110.4 |
| Essential oils - NEU | JYI8 | 0205300200 | 121.2 | 120.1 | 119.5 | 117.2 | 117.3 | 116.9 | 118.1p | 117.8p | 120.5 |
| Other chemical products n.e.c - EU | JYJ3 | 0205900100 | 122.7B | 120.8B | 120.3B | 118.5B | 119.0B | 117.8B | 119.5pB | 121.7pB | 117.9 |
| Other chemical products n.e.c - NEU | JYJ4 | 0205900200 | 157.0B | 154.6B | 160.3B | 159.4B | 156.5B | 153.5B | 154.5pB | 153.4pB | 152.1 |
| Basic pharmaceutical & pharmaceutical preparations | | | | | | | | | | | |
| Basic pharmaceutical products - EU | JYL7 | 0211000100 | 124.2F | 123.1F | 122.7F | 121.8F | 122.1F | 125.4F | 125.9pF | 127.0pF | 122.6 |
| Basic pharmaceutical products - NEU | JYL8 | 0211000200 | 116.1F | 114.6F | 118.3F | 117.7F | 114.8F | 112.9F | 113.3pF | 112.0pF | 112.1 |
| Pharmaceutical preparations - EU | JYM7 | 0212000100 | 117.4B | 114.2B | 78.9B | 76.8B | 77.5B | 76.7B | 78.0pB | 79.6pB | .. |
| Pharmaceutical preparations - NEU | JYM8 | 0212000200 | 128.7 | 124.8 | 129.8 | 129.7 | 129.1 | 128.7 | 128.8p | 128.7p | 123.1 |
| Rubber & plastic products | | | | | | | | | | | |
| Other rubber products - EU | JY03 | 0221900100 | 128.6B | 127.1B | 126.5B | 125.7B | 127.7B | 126.4B | 127.6pB | 130.7pB | 125.6 |
| Plastic plates, sheets, tubes & profiles - EU | JY09 | 0222100100 | 143.0 | 139.1 | 137.2 | 134.4 | 135.3 | 134.0 | 136.2p | 140.8p | 137.4 |
| Plastic plates, sheets, tubes & profiles - NEU | JYP2 | 0222100200 | 118.2B | 116.9B | 121.3B | 120.6B | 117.6B | 115.8B | 119.6pB | 118.8pB | 112.7 |
| Plastic packing goods - EU | JYQ6 | 0222200100 | 115.5B | 113.2B | 112.1B | 109.4B | 110.1B | 109.5B | 110.7pB | 113.7pB | 114.3 |
| Plastic packing goods - NEU | JYQ7 | 0222200200 | 124.5B | 122.4B | 123.5B | 121.9B | 121.7B | 120.8B | 121.4pB | 123.5pB | 108.5 |
| Builders' ware of plastic - EU | JYR9 | 0222300100 | 148.6B | 145.1B | 143.0B | 139.5B | 140.6B | 138.6B | 141.1pB | 146.1pB | 147.8 |
| Builders' ware of plastic - NEU | JYS2 | 0222300200 | 139.9F | 138.8F | 141.6F | 140.6B | 138.3B | 136.8B | 139.6pB | 138.5pB | 135.9 |
| Other plastic products - EU | JYS7 | 0222900100 | 125.4B | 124.5B | 124.2B | 123.3B | 123.6B | 123.1B | 124.1pB | 126.0pB | 124.0 |
| Other plastic products - NEU | JYS8 | 0222900200 | 131.1B | 130.6B | 133.9B | 133.5B | 131.5B | 129.9B | 130.3pB | 130.2pB | 116.2 |

1 Average index value for the calendar year January to December 2009.

Source: Office for National Statistics

EU - Exported within the European Union.

NEU - Exported outside of the European Union.

For B and F see notes.

6 Price indices of goods exported from the United Kingdom - SIC 2007

continued

Export Prices Index: 2005=100, SIC2007

| | | | 2010 | 2010 | 2010 | 2010 | 2010 | 2010 | 2010 | 2010 | 2010 | Annual Average ¹ 2009 |
|---|------|------------|--------|--------|--------|--------|--------|--------|---------|---------|------|--|
| | | | Mar | Apr | May | Jun | Jul | Aug | Sep | Oct | | |
| Other non-metallic mineral products | | | | | | | | | | | | |
| Glass fibres - EU | JYT7 | 0231400100 | 138.5B | 134.5B | 131.6B | 130.3B | 131.9B | 131.3B | 134.1pB | 139.8pB | | 137.2 |
| Refractory products - EU | JYU7 | 0232000100 | 148.3B | 145.2B | 142.6B | 133.8B | 135.1B | 137.3B | 138.6pB | 142.1pB | | 145.8 |
| Refractory products - NEU | JYU8 | 0232000200 | 141.6B | 137.4B | 139.2B | 138.2B | 139.9B | 139.6B | 139.8pB | 140.3pB | | 131.2 |
| Ceramic household & ornamental articles - EU | JYV3 | 0234100100 | 135.9 | 133.8 | 134.1 | 131.4 | 132.5 | 131.0 | 133.0p | 137.6p | | 134.2 |
| Ceramic household & ornamental articles - NEU | JYV4 | 0234100200 | 112.3 | 111.9 | 112.7 | 112.4 | 111.9 | 114.2 | 115.4p | 116.0p | | 112.9 |
| Ceramic sanitary fixtures - EU | JYW3 | 0234200100 | 105.0F | 105.0F | 105.0F | 105.4F | 105.4F | 104.7F | 105.5pF | 108.0pF | | 103.3 |
| Basic metals | | | | | | | | | | | | |
| Basic iron & steel & of ferro alloys - EU | JYW9 | 0241000100 | 96.7B | 105.9B | 115.3B | 117.7B | 113.5B | 113.5B | 115.9pB | 119.5pB | | 91.8 |
| Basic iron & steel & of ferro alloys - NEU | JYX2 | 0241000200 | 136.1B | 141.5B | 148.7B | 146.9B | 147.0B | 149.8B | 153.5pB | 154.0pB | | 126.9 |
| Tubes, pipes, hollow profiles & related fittings, of steel - EU | JYY6 | 0242000100 | 143.5B | 139.0B | 138.9B | 144.1B | 142.4B | 136.7B | 137.6pB | 140.0pB | | 134.3 |
| Aluminium - EU | JZ2H | 0244200100 | 144.9B | 142.9B | 142.5B | 141.1B | 142.9B | 143.7B | 146.5pB | 154.2pB | | 140.3 |
| Aluminium - NEU | JZ2I | 0244200200 | 144.1B | 142.8B | 146.0B | 145.1B | 140.8B | 138.0B | 138.3pB | 132.0pB | | 144.3 |
| Copper - NEU | JZ2R | 0244400200 | .. | .. | .. | 151.2F | 152.1F | 152.0F | 152.0pF | 151.9pF | | .. |
| Fabricated metal products (except machinery & equipment) | | | | | | | | | | | | |
| Metal structures & parts of structures - EU | JZ35 | 0251100100 | 135.3B | 134.1B | 133.1B | 130.4B | 130.9B | 130.6B | 131.6pB | 132.0pB | | 136.8 |
| Other tanks, reservoirs & containers of metal - EU | JZ3I | 0252900100 | 148.9 | 145.7 | 143.3 | 139.9 | 140.9 | 139.5 | 143.0p | 147.2p | | 145.9 |
| Tools - EU | JZ3Z | 0257300100 | 117.8 | 116.3 | 114.9 | 113.6 | 115.9 | 115.1 | 116.1p | 118.5p | | 116.9 |
| Tools - NEU | JZ42 | 0257300200 | 116.1B | 115.2B | 116.0B | 115.5B | 116.0B | 115.2B | 115.4pB | 115.5pB | | 113.4 |
| Wire products, chain & springs - EU | JZ4L | 0259300100 | 149.6B | 145.6B | 142.0B | 139.1B | 140.7B | 143.2B | 144.6pB | 150.3pB | | 149.3 |
| Fasteners & screw machine products - EU | JZ4T | 0259400100 | 232.7B | 232.1B | 231.5B | 230.5B | 227.8B | 227.3B | 218.9pB | 220.4pB | | 237.6 |
| Fasteners & screw machine products - NEU | JZ4U | 0259400200 | 88.7B | 88.4B | 89.1B | 88.9B | 88.1B | 88.9B | 88.9pB | 88.8pB | | 92.2 |
| Other fabricated metal products n.e.c - EU | JZ53 | 0259900100 | 129.7B | 127.7B | 126.4B | 124.4B | 122.3B | 127.3B | 129.1pB | 131.9pB | | 127.1 |
| Other fabricated metal products n.e.c - NEU | JZ54 | 0259900200 | 111.7B | 111.2B | 111.3B | 111.9B | 109.9B | 109.3B | 108.7pB | 106.0pB | | 113.2 |
| Electronic components & optical | | | | | | | | | | | | |
| Electronic components - NEU | JZ5C | 0261100200 | 143.7B | 138.9B | 145.8B | 145.7B | 143.8B | 142.4B | 146.3pB | 146.5pB | | .. |
| Communication equipment - EU | JZ5L | 0263000100 | 128.9B | 127.0B | 127.2B | 129.1B | 129.4B | 128.4B | 129.5pB | 128.3pB | | .. |
| Communication equipment - NEU | JZ5M | 0263000200 | 125.4F | 123.5F | 123.5F | 122.8F | 119.3F | 117.0F | 117.5pF | 115.2pF | | .. |
| Consumer electronics - EU | JZ5Q | 0264000100 | 118.8B | 116.6B | 115.1B | 112.8B | 115.5B | 115.3B | 116.3pB | 118.7pB | | 119.9 |
| Consumer electronics - NEU | JZ5R | 0264000200 | 127.1B | 125.5B | 129.8B | 129.0B | 128.3B | 127.4B | 127.6pB | 127.1pB | | 122.6 |
| Measuring, testing & navigating equipment - EU | JZ5X | 0265100100 | 120.4B | 119.4B | 119.2B | 117.8B | 117.8B | 117.1B | 117.9pB | 119.6pB | | 119.5 |
| Measuring, testing & navigating equipment - NEU | JZ5Y | 0265100200 | 111.1B | 110.2B | 112.2B | 111.6B | 109.8B | 108.7B | 109.2pB | 108.5pB | | 110.4 |
| Irradiation, electromedical & electrotherapeutic equipment - EU | JZ6U | 0266000100 | 150.4B | 148.8B | 148.4B | 147.4B | 145.7B | 135.6B | 136.2pB | 133.6pB | | 145.4 |
| Irradiation, electromedical & electrotherapeutic equipment - NEU | JZ6V | 0266000200 | 124.5F | 121.4F | 124.1F | 123.8F | 123.1F | 120.6F | 122.5pF | 123.1pF | | 119.0 |

1 Average index value for the calendar year January to December 2009.

Source: Office for National Statistics

EU - Exported within the European Union.

NEU - Exported outside of the European Union.

For B and F see notes.

6 Price indices of goods exported from the United Kingdom - SIC 2007

continued

Export Prices Index: 2005=100, SIC2007

| | | | 2010 Mar | 2010 Apr | 2010 May | 2010 Jun | 2010 Jul | 2010 Aug | 2010 Sep | 2010 Oct | Annual Average ¹ 2009 |
|--|------|------------|-------------|-------------|-------------|-------------|-------------|-------------|-------------|-------------|--|
| Electrical equipment | | | | | | | | | | | |
| Electric motors, generators and transformers - NEU | JZ77 | 0271100200 | 119.8B | 119.4B | 120.3B | 120.2B | 119.4B | 118.9B | 119.0pB | 118.7pB | 116.1 |
| Electricity distribution and control apparatus - EU | JZ7K | 0271200100 | 115.2B | 113.9B | 114.9B | 114.0B | 113.0B | 111.8B | 112.4pB | 112.8pB | 110.5 |
| Electricity distribution and control apparatus - NEU | JZ7L | 0271200200 | 127.3B | 126.7B | 128.2B | 127.9B | 126.8B | 126.0B | 126.2pB | 125.7pB | 124.1 |
| Wiring devices - NEU | JZ86 | 0273300200 | 116.9B | 116.3B | 118.3B | 117.7B | 117.5B | 117.0B | 116.9pB | 116.5pB | 116.7 |
| Electric lighting equipment - EU | JZ8B | 0274000100 | 136.3B | 133.8B | 131.7B | 130.0B | 130.6B | 130.4B | 131.0pB | 133.2pB | 129.7 |
| Electric lighting equipment - NEU | JZ8C | 0274000200 | 141.8B | 141.4B | 141.2B | 144.3B | 144.7B | 144.6B | 144.6pB | 144.4pB | 129.7 |
| Electric domestic appliances - NEU | JZ8I | 0275100200 | .. | .. | .. | 71.1B | 71.2B | 71.8B | 72.5pB | 72.9pB | .. |
| Other electrical equipment - EU | JZ8M | 0279000100 | 100.9B | 100.7B | 100.1B | 99.9B | 100.2B | 99.6B | 100.4pB | 102.3pB | 97.2 |
| Other electrical equipment - NEU | JZ8N | 0279000200 | 105.5B | 105.2B | 106.4B | 106.2B | 105.1B | 104.4B | 104.1pB | 103.6pB | 103.0 |
| Machinery & equipment n.e.c | | | | | | | | | | | |
| Engines & turbines, except aircraft, vehicle and cycle engines - EU | JZ8V | 0281100100 | 120.8B | 120.0B | 116.8B | 115.9F | 116.2F | 115.8F | 116.3pF | 117.4pF | 119.9 |
| Engines & turbines, except aircraft, vehicle and cycle engines - NEU | JZ8W | 0281100200 | 134.8 | 133.8 | 133.6 | 133.1 | 132.0 | 131.1 | 131.8p | 131.9p | 131.8 |
| Fluid power equipment - EU | JZ98 | 0281200100 | 116.4B | 115.0B | 114.0B | 112.1B | 112.4B | 111.5B | 112.6pB | 114.8pB | 116.3 |
| Other pumps & compressors - EU | JZ9E | 0281300100 | 124.5B | 122.4B | 122.3B | 120.3B | 121.1B | 120.5B | 121.4pB | 123.1pB | 130.6 |
| Other pumps & compressors - NEU | JZ9F | 0281300200 | 135.7B | 133.8B | 137.9B | 136.7B | 134.6B | 132.9B | 134.2pB | 133.5pB | 132.1 |
| Other taps & valves - EU | JZ9S | 0281400100 | 127.2B | 123.9B | 121.9B | 118.2B | 119.0B | 117.8B | 119.5pB | 123.5pB | 127.1 |
| Other taps & valves - NEU | JZ9T | 0281400200 | 109.2B | 108.6B | 110.1B | 109.8B | 108.9B | 108.2B | 108.4pB | 107.9pB | 111.5 |
| Bearings, gears, gearing & driving elements - EU | JZA3 | 0281500100 | 121.1 | 119.0 | 118.9 | 117.1 | 117.8 | 117.4 | 118.9p | 122.0p | 117.0 |
| Bearings, gears, gearing & driving elements - NEU | JZA4 | 0281500200 | 109.0B | 107.8B | 109.2B | 108.4B | 108.2B | 107.1B | 107.7pB | 108.3pB | 109.0 |
| Lifting & handling equipment - EU | JZC3 | 0282200100 | 123.3 | 121.3 | 119.2 | 115.9 | 118.2 | 116.7 | 118.6p | 123.7p | 129.3 |
| Lifting & handling equipment - NEU | JZC4 | 0282200200 | 113.0B | 113.0B | 113.0B | 113.0B | 114.2B | 114.4B | 114.5pB | 118.4pB | 113.3 |
| Non-domestic cooling & ventilation equipment - EU | JZD5 | 0282500100 | 131.3B | 130.2B | 129.7B | 128.5B | 128.2B | 127.7B | 128.9pB | 131.4pB | 130.8 |
| Non-domestic cooling & ventilation equipment - NEU | JZD6 | 0282500200 | .. | .. | .. | 131.6B | 131.5B | 129.7B | 131.3pB | 135.7pB | .. |
| Other general purpose machinery n.e.c - EU | JZE2 | 0282900100 | 121.8B | 120.1B | 121.9B | 122.2B | 122.4B | 121.4B | 125.4pB | 127.6pB | 119.0 |
| Other general purpose machinery n.e.c - NEU | JZE3 | 0282900200 | 122.0B | 121.5B | 122.7B | 122.8B | 121.8B | 121.7B | 125.2pB | 125.0pB | 119.3 |
| Agricultural & forestry machinery - EU | JZF7 | 0283000100 | 153.4F | 145.8F | 142.9F | 141.5F | 142.8F | 141.0F | 144.9pF | 150.5pF | 146.7 |
| Metal forming machinery - EU | JZG9 | 0284100100 | .. | .. | .. | 123.3B | 124.6B | 122.9B | 125.2pB | 130.4pB | .. |
| Metal forming machinery - NEU | JZH2 | 0284100200 | 113.9B | 113.5B | 114.5B | 114.3B | 113.4B | 112.7B | 113.1pB | 112.6pB | 111.4 |
| Machinery for metallurgy - NEU | JZI6 | 0289100200 | 182.2F | 177.6F | 174.4F | 169.5F | 168.8F | 166.2F | 168.7pF | 173.0pF | 180.0 |
| Machinery for mining, quarrying & construction - EU | JZI9 | 0289200100 | 137.0B | 134.9B | 134.5B | 132.7B | 133.3B | 131.8B | 133.6pB | 137.1pB | 132.6 |
| Machinery for mining, quarrying & construction - NEU | JZJ2 | 0289200200 | 128.9B | 126.5B | 127.2B | 124.7B | 123.7rB | 122.4B | 123.8pB | 124.8pB | 126.8 |
| Machinery for paper & paperboard production - NEU | JZL6 | 0289500200 | 110.4B | 109.6B | 110.0B | 108.9B | 109.2B | 108.8B | 109.5pB | 110.9pB | 108.3 |
| Other special-purpose machinery n.e.c - EU | JZM2 | 0289900100 | 123.8B | 122.6B | 120.4B | 119.2B | 124.1B | 123.7B | 124.3pB | 125.5pB | 124.0 |

1 Average index value for the calendar year January to December 2009.

Source: Office for National Statistics

EU - Exported within the European Union.

NEU - Exported outside of the European Union.

For B and F see notes.

6 Price indices of goods exported from the United Kingdom - SIC 2007

continued

Export Prices Index: 2005=100, SIC2007

| | | | 2010 Mar | 2010 Apr | 2010 May | 2010 Jun | 2010 Jul | 2010 Aug | 2010 Sep | 2010 Oct | Annual Average ¹ 2009 |
|---|------|------------|-------------|-------------|-------------|-------------|-------------|-------------|-------------|-------------|--|
| Motor vehicles, trailers & semi-trailers | | | | | | | | | | | |
| Motor vehicles - EU | JZM9 | 0291000100 | 131.0B | 129.2B | 128.1B | 126.4B | 127.8B | 126.8B | 128.4pB | 133.9pB | .. |
| Bodies (coachwork) for motor vehicles; trailers and semi-trailers - EU | JZO4 | 0292000100 | 115.2 | 112.9 | 111.1 | 108.6 | 109.8 | 108.7 | 110.6p | 114.3p | 109.7 |
| Bodies (coachwork) for motor vehicles; trailers and semi-trailers - NEU | JZO5 | 0292000200 | 120.8F | 118.0F | 116.3F | 113.3B | 114.0B | 113.0B | 114.5pB | 117.4pB | 118.8 |
| Electrical and electronic equipment for motor vehicles - EU | JZP3 | 0293100100 | 150.2F | 149.9F | 149.7F | 149.5B | 149.6B | 149.2B | 149.8pB | 151.1pB | 128.0 |
| Electrical and electronic equipment for motor vehicles - NEU | JZP4 | 0293100200 | 163.1F | 161.5F | 165.4F | 164.7F | 163.1F | 162.1F | 162.3pF | 173.7pF | 143.5 |
| Other parts and accessories for motor vehicles - EU | JZP9 | 0293200100 | 117.1 | 115.1 | 113.4 | 111.0 | 111.9 | 110.9 | 112.4p | 113.8p | 119.8 |
| Other parts and accessories for motor vehicles - NEU | JZQ2 | 0293200200 | 121.6B | 119.3B | 120.8B | 119.1B | 115.8B | 114.0B | 114.8pB | 114.2pB | 119.4 |
| Other transport equipment | | | | | | | | | | | |
| Motorcycles - NEU | JZR6 | 0309100200 | 152.9F | 153.7F | 156.1F | 155.7F | 157.8F | 156.6F | 156.8pF | 156.1pF | 151.8 |
| Furniture | | | | | | | | | | | |
| Seats & parts thereof; parts of furniture - EU | JZS8 | 0310000100 | 130.5B | 127.8B | 127.7B | 125.1B | 125.3B | 123.6B | 126.7pB | 129.8pB | 127.5 |
| Seats & parts thereof; parts of furniture - NEU | JZS9 | 0310000200 | 134.9B | 131.7B | 132.4B | 129.6B | 128.9B | 126.8B | 128.8pB | 131.0pB | 130.5 |
| Kitchen furniture - EU | JZU4 | 0310200100 | 119.2F | 119.2F | 119.2F | 119.2F | 119.2F | 119.2F | 119.2pF | 119.2pF | .. |
| Other furniture - EU | JZU8 | 0310900100 | 119.6B | 120.1B | 119.8B | 127.7B | 128.5B | 129.0B | 130.4pB | 128.3pB | 122.4 |
| Other furniture - NEU | JZU9 | 0310900200 | 109.7F | 113.5F | 115.6F | 115.6B | 115.9B | 116.5B | 117.5pB | 119.9pB | 111.9 |
| Other manufactured goods | | | | | | | | | | | |
| Sports goods - NEU | JZV7 | 0323000200 | 115.1B | 116.2B | 116.2B | 116.2B | 116.3B | 116.0B | 116.1pB | 115.8pB | 106.2 |
| Games & toys - EU | JZW4 | 0324000100 | 113.7B | 113.7B | 114.7B | 114.7B | 114.7B | 114.7B | 115.9pB | 115.9pB | 112.2 |
| Medical & dental instruments & supplies - EU | JZW8 | 0325000100 | 105.6B | 104.6B | 104.6B | 103.7B | 103.4B | 102.5B | 103.1pB | 104.2pB | 105.2 |
| Medical & dental instruments & supplies - NEU | JZW9 | 0325000200 | 110.4B | 109.5B | 111.0B | 110.3B | 108.9B | 107.9B | 108.3pB | 108.1pB | 107.8 |
| Other manufactured goods n.e.c - EU | JZY2 | 0329900100 | 136.6F | 133.4F | 131.2F | 128.8F | 129.4F | 128.2F | 129.8pF | 133.1pF | 134.6 |

1 Average index value for the calendar year January to December 2009.

Source: Office for National Statistics

EU - Exported within the European Union.

NEU - Exported outside of the European Union.

For B and F see notes.