

Consumption increase confirmed

Total energy

Increase in consumption of all fuels except coal

During the latest three-month period, February to April, there was an increase of 1½ per cent in total inland energy consumption on a primary fuel input basis over the corresponding months of 1975. The rise in natural gas continued, and petroleum showed a small increase (though this only occurred during March). Coal consumption fell by 3 per cent. After seasonal adjustment and correction for temperature differences, total consumption during the period was about 1 per cent above the level of a year ago.

Coal

Opencast production reaches new peak

Opencast coal production in May measured at a weekly average rate was the highest recorded in this decade and, in the first five months of 1976, increased by more than 12 per cent over the corresponding period last year. Deep-mined production on the other hand fell by nearly 7 per cent in the five month period and, overall, production was down by about 4½ per cent.

Consumption in the three months March-May was nearly 5 per cent down on the same period a year ago.

Distributed and undistributed stocks of coal continue to rise. Stocks at power stations at the end of May stood at 17½ million tons which is 2½ million tons more than at the same time last year.

Gas

Growth rate slows down

Although gas sent out in the first five months of 1976 increased by 7½ per cent over the corresponding period of 1975, the rate of increase in April and May was down to 2½ per cent above last year's send out. However, much of this slow down may be attributable to the warmer weather this year.

Electricity

Small reduction in coal burn

Total electricity supplied in the three months from February to April was 0.7 per cent lower than in the corresponding period of 1975. Primary fuel use was down by about 1½ per cent and for the first time since October a reduction in coal burn (of 1 per cent) is shown. However, oil is still bearing the main brunt of the fuel reductions with a decrease of almost 12 per cent.

The final table in *Energy Trends* this month contains the latest available figures of electricity generated outside the public electricity supply system in Great Britain. Commencing with the first quarter of 1976 the coverage of the regular quarterly inquiry from which these data are compiled has been improved as the result of supplementary information obtained last year from a special survey into the availability of stand-by plant in manufacturing industry. With this improved coverage the estimates referred to in footnote 4 of previous issues of the table

are no longer necessary. The figures now relate to nearly all known firms (about 270) generating 1 GWh or more of electricity per annum. (The special survey on stand-by plant was conducted by the Business Statistics Office on behalf of the Department of Energy. The main results are due to be published early in July in a *Business Monitor* copies of which will be available from Her Majesty's Stationery Office.)

Petroleum

Refinery output rises

Refinery throughput and the total output of petroleum products both increased by more than 7 per cent over corresponding 1975 levels in the three months February to April 1976, with the greatest increase coming in the latest month.

Deliveries of petroleum products for inland consumption for all purposes increased by a little over 1 per cent in the February to April period compared with last year. The demand for fuel oil was still lower than a year ago but the decline was much less marked than in recent three month periods.

Total deliveries of petroleum products used for energy purposes fell by about 3 per cent in the first quarter of 1976 compared with the same quarter last year, the largest declines being in deliveries to power stations (–27%), gas works (–54%) and the iron and steel industry (–21%). Industry, other than iron and steel, together with the transport and domestic sectors, all registered increases over last year's levels. The estimated endurance of oil stocks held by oil companies at the end of May stood at 100 days.

Enclosed with this edition of *Energy Trends* is a copy of the 1976 pocket-sized card containing a selection from the statistics covering the last ten years that will be found in the *Digest of United Kingdom Energy Statistics 1976* (due to be published in August).

The figures in the card for Total inland energy consumption reflect two conceptual changes (as well as other revisions) that will appear in the *Energy Digest*. For these reasons, the figures differ slightly from those shown in Tables 1 and 2 of *Energy Trends*. These revisions, together with an explanation of the conceptual changes, will appear in the August issue of *Energy Trends*.

This Bulletin is prepared by the Economics and Statistics Division of the Department of Energy. Further copies of the Bulletin may be obtained from:

Information Division, Department of Energy,
Room 1674, Thames House South,
Millbank, London SW1P 4QJ.

Figures for the latest periods and the corresponding averages or totals are provisional and are liable to subsequent revision.

The figures have not been adjusted for temperature or seasonal factors except where noted in Table 1. Monthly figures relate to four week periods except where otherwise indicated.

Percentage changes relate to the corresponding period a year ago. They are calculated from unrounded figures but are shown only as (+) or (–) when the percentage change is very large. All figures relate to the United Kingdom unless otherwise indicated.

Explanatory notes on the definitions and concepts used in the tables and on the relationship between some of the main series are given in the Supplement to the March issue of *Energy Trends*. Extra copies of that Supplement may be obtained from the Department of Energy.

Symbols used in the tables

- .. not available.
- nil or less than half the final digit shown
- * five-week period
- p provisional

Total energy

TABLE 1. Inland energy consumption: primary fuel input basis

	Total	Coal	Petroleum ¹	Natural gas	Nuclear electricity	Hydro-electricity	Total	Coal	Petroleum ¹	Natural gas	Nuclear electricity	Hydro-electricity
	<i>Million tons of coal or coal equivalent</i>						<i>Million metric tonnes of oil or oil equivalent</i>					
1973	346.1	131.3	159.4	43.5	9.9	2.0	206.9	78.5	95.3	26.0	5.9	1.2
1974	331.1	116.0	149.0	52.1	11.9	2.1	197.9	69.3	89.0	31.2	7.1	1.3
1975 p	320.5	120.3	132.9	54.5	10.8	2.0	191.5	71.9	79.4	32.6	6.4	1.2
Per cent change	–3.2	+3.7	–10.8	+4.7	–9.7	–7.9	–3.2	+3.7	–10.8	+4.7	–9.7	–7.9
1975 Jan-Apr	120.0	44.3	49.0	21.6	4.2	0.9	71.7	26.5	29.3	12.9	2.5	0.5
1976 Jan-Apr p	120.5	43.6	47.4	24.3	4.3	0.9	72.0	26.0	28.3	14.6	2.6	0.5
Per cent change	+0.4	–1.7	–3.4	+12.9	+3.0	–0.8	+0.4	–1.7	–3.4	+12.9	+3.0	–0.8
1975 Feb	29.6	11.1	11.9	5.3	1.0	0.3	17.7	6.6	7.1	3.2	0.6	0.2
Mar*	34.3	13.9	13.3	5.7	1.2	0.2	20.5	8.3	7.9	3.4	0.8	0.1
Apr	27.1	9.8	11.5	4.8	0.9	0.1	16.2	5.8	6.9	2.9	0.5	0.1
Total	91.0	34.8	36.7	15.8	3.1	0.6	54.4	20.7	21.9	9.5	1.9	0.4
1976 Feb	30.6	11.5	11.7	6.2	1.0	0.2	18.3	6.8	7.0	3.7	0.6	0.2
Mar*	35.7	13.2	14.5	6.5	1.3	0.2	21.3	7.9	8.6	3.9	0.8	0.1
Apr p	26.1	9.0	10.7	5.2	1.0	0.2	15.6	5.4	6.4	3.1	0.6	0.1
Total	92.4	33.7	36.9	17.9	3.3	0.6	55.2	20.1	22.0	10.7	2.0	0.4
Per cent change	+1.5	–3.1	+0.4	+12.9	+4.5	+22.6	+1.5	–3.1	+0.4	+12.9	+4.5	+22.6

Seasonally adjusted and temperature corrected² (annual rates)

1975 Jan-Apr	329.6	126.4	136.6	53.7	10.9	2.0	197.0	75.6	81.6	32.1	6.5	1.2
1976 Jan-Apr p	329.3	123.8	131.9	60.3	11.1	2.2	196.8	74.0	78.8	36.1	6.6	1.3
Per cent change	–0.1	–2.1	–3.5	+12.2	+2.2	+11.6	–0.1	–2.1	–3.5	+12.2	+2.2	+11.6
1975 Feb	327.7	129.9	132.3	52.9	10.5	2.1	195.8	77.6	79.1	31.6	6.3	1.2
Mar*	321.6	129.6	123.3	55.9	11.0	1.8	192.2	77.4	73.7	33.4	6.6	1.1
Apr	343.3	127.5	149.0	53.9	11.5	1.4	205.2	76.2	89.0	32.2	6.9	0.9
Average	330.2	129.1	134.0	54.3	11.0	1.8	197.3	77.1	80.1	32.5	6.5	1.1
1976 Feb	334.1	129.7	130.4	61.6	10.4	2.0	199.6	77.5	77.9	36.8	6.2	1.2
Mar*	335.6	124.3	135.0	63.1	11.1	2.1	200.6	74.3	80.7	37.7	6.6	1.3
Apr p	330.7	118.1	138.8	57.9	12.8	3.1	197.6	70.5	83.0	34.6	7.6	1.9
Average	333.6	124.0	134.8	61.0	11.4	2.4	199.3	74.1	80.5	36.5	6.8	1.4
Per cent change	+1.0	–3.9	+0.6	+12.3	+3.7	+33.0	+1.0	–3.9	+0.6	+12.3	+3.7	+33.0

1. Excludes non-energy use of petroleum products

2. Only coal and petroleum are temperature corrected.

Energy: Total inland consumption (primary fuel input basis)¹

Million tons
coal equivalent

Million tonnes
oil equivalent

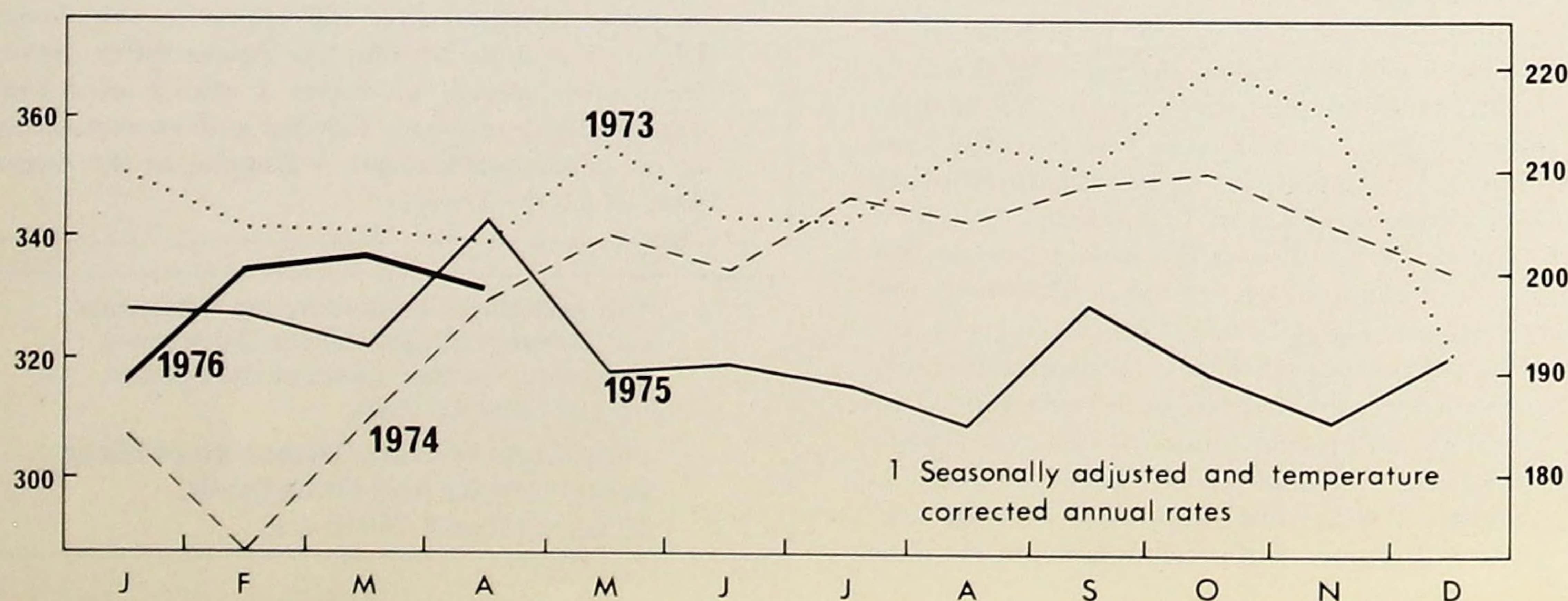


TABLE 2. Inland energy consumption: heat supplied basis

Million therms

	1974	1975	Per cent change	1973	1974				1975 p				Per ¹ cent change
				4th quarter	1st quarter	2nd quarter	3rd quarter	4th quarter	1st quarter	2nd quarter	3rd quarter	4th quarter	
Total primary ² energy input	83,494	80,584	-3.5	24,277	21,866	19,751	17,903	23,974	23,287	18,998	15,955	22,344	-6.8
Conversion losses etc. ³	25,006	24,747	-1.0	7,427	6,293	5,810	5,399	7,504	6,890	5,763	5,008	7,086	-5.6
Final consumption by user:													
Iron and steel industry													
Coal	99	72	-27.3	36	23	34	16	26	25	18	10	19	-26.9
Other solid fuel ⁴	2,620	2,272	-13.3	769	564	691	710	655	720	549	459	544	-16.9
Other coal-derived fuels ⁵	374	366	-2.1	121	79	104	96	95	106	96	75	89	-6.3
Gas ⁶	395	371	-6.1	107	110	102	86	97	101	91	79	100	+3.1
Electricity	345	344	-0.3	90	81	87	84	93	94	84	74	92	-1.1
Petroleum	1,648	1,357	-17.7	541	484	366	347	451	449	334	244	330	-26.8
Total	5,481	4,782	-12.8	1,664	1,341	1,384	1,339	1,417	1,495	1,172	941	1,174	-17.1
Other industries													
Coal	2,795	2,458	-12.1	870	514	802	733	746	660	613	528	657	-11.9
Other solid fuel ⁴	228	161	-29.4	70	52	61	52	63	50	48	34	29	-54.0
Other coal-derived fuels ⁵	63	94	+49.2	12	10	18	18	17	21	27	26	20	+17.6
Gas ⁶	4,692	4,700	+0.2	1,192	1,230	1,148	1,041	1,273	1,295	1,091	1,007	1,307	+2.7
Electricity	2,244	2,227	-0.8	608	503	572	551	618	589	540	506	592	-4.2
Petroleum	8,433	7,455	-11.6	2,706	2,470	1,942	1,619	2,402	2,148	1,777	1,306	2,224	-7.4
Total	18,455	17,095	-7.4	5,458	4,779	4,543	4,014	5,119	4,763	4,096	3,407	4,829	-5.7
Transport sector													
Coal	24	21	-12.5	8	7	5	4	8	7	4	3	7	-12.5
Electricity	92	101	+9.8	22	21	23	23	25	27	25	24	25	-
Petroleum	12,295	12,143	-1.2	3,123	2,744	3,126	3,289	3,136	2,771	3,104	3,225	3,043	-3.0
Total	12,411	12,265	-1.2	3,153	2,772	3,154	3,316	3,169	2,805	3,133	3,252	3,075	-3.0
Domestic sector													
Coal	3,932	3,371	-14.3	998	761	1,067	947	1,157	1,010	900	697	764	-34.0
Other solid fuel ⁴	1,100	959	-12.8	304	233	290	281	296	270	229	259	201	-32.1
Gas ⁶	5,380	5,891	+9.5	1,561	1,978	1,010	695	1,697	2,329	1,119	615	1,828	+7.7
Electricity	3,157	3,047	-3.5	895	1,033	670	537	917	1,038	679	487	843	-8.1
Petroleum	1,482	1,434	-3.2	554	514	279	188	501	473	306	194	461	-8.0
Total	15,051	14,702	-2.3	4,312	4,519	3,316	2,648	4,568	5,120	3,233	2,252	4,097	-10.3
Other final users ⁷													
Coal	669	518	-22.6	221	189	142	125	213	136	130	83	169	-20.7
Other solid fuel ⁴	373	219	-41.3	93	87	97	91	98	64	49	63	43	-56.1
Gas ⁶	1,269	1,347	+6.1	342	433	276	173	387	472	310	171	394	+1.8
Electricity	1,444	1,554	+7.6	463	361	321	305	457	461	348	304	441	-3.5
Petroleum	3,335	3,355	+0.6	1,144	1,092	708	493	1,042	1,081	764	474	1,036	-0.6
Total	7,090	6,993	-1.4	2,263	2,162	1,544	1,187	2,197	2,214	1,601	1,095	2,083	-5.2
Total final users	58,488	55,837	-4.5	16,850	15,573	13,941	12,504	16,470	16,397	13,235	10,947	15,258	-7.4

Final consumption by fuel:

Coal	7,519	6,440	-14.4	2,133	1,494	2,050	1,825	2,150	1,838	1,665	1,321	1,616	-24.8
Other solid fuel ⁴	4,321	3,611	-16.4	1,236	936	1,139	1,134	1,112	1,104	875	815	817	-26.5
Other coal-derived fuels ⁵	437	460	+5.3	133	89	122	114	112	127	123	101	109	-2.7
Gas ⁶	11,736	12,309	+4.9	3,202	3,751	2,536	1,995	3,454	4,197	2,611	1,872	3,629	+5.1
Electricity	7,282	7,273	-0.1	2,078	1,999	1,673	1,500	2,110	2,209	1,676	1,395	1,993	-5.5
Petroleum	27,193	25,744	-5.3	8,068	7,304	6,421	5,936	7,532	6,922	6,285	5,443	7,094	-5.8
Total all fuels	58,488	55,837	-4.5	16,850	15,573	13,941	12,504	16,470	16,397	13,235	10,947	15,258	-7.4

1. Per cent change on the corresponding period of the previous year.

2. Thermal equivalent of total energy consumption in Table 1. A more detailed analysis of the annual figures is shown in the Digest of United Kingdom Energy Statistics 1975, Tables 6 and 8.

3. Losses in conversion and distribution and used by fuel industries.

4. Coke and other manufactured solid fuels.

5. Coke oven gas, creosote/pitch mixtures and other liquid fuels derived from coal.

6. Natural gas supplied direct, and town gas.

7. Mainly public administration, commerce and agriculture.

Coal

TABLE 3. Supply

Thousand tons

	Net inland supply	Production			Net Imports	Imports ²	Exports ²	Tonnage lost (deep-mined) ³	
		Total ¹	Deep-mined	Opencast				Recognised holidays and rest days	Disputes
1973	128,904	129,906	118,140	9,964	-1,002	1,649	2,651	10,313	5,569
1974	110,362	108,707	98,413	9,085	+1,655	3,491	1,836	10,352	15,996
1975	129,505	126,650	115,557	10,249	+2,855	5,003	2,148	12,105	347
Per cent change	+17.3	+16.5	+17.4	+12.8	+72.5	+43.3	+17.0	+16.9	-
1975 Jan-May	56,021	55,078	50,769	4,099	+943	2,216	1,273	2,164	154
1976 Jan-May p	53,483	52,557	47,334	4,603	+926	1,453	527	3,066	350
Per cent change	-4.5	-4.6	-6.8	+12.3	-1.8	-34.4	-58.6	+41.7	(+)
1975 Mar*	13,943	14,009	12,845	1,114	-66	290	356	113	20
Apr	10,527	10,232	9,442	750	+295	478	183	773	25
May	11,116	10,756	9,890	826	+360	577	217	70	37
Total	35,586	34,997	32,177	2,690	+589	1,345	756	956	82
1976 Mar*	13,296	13,149	11,828	1,173	+147	281	134	-	62
Apr	9,828	9,679	8,717	824	+149	248	99	840	34
May p	10,848	10,544	9,459	997	+304	402	98	46	66
Total	33,972	33,372	30,004	2,994	+600	931	331	886	162
Per cent change	-4.5	-4.6	-6.8	+11.3	+1.9	-30.8	-56.2	-7.3	+97.6

1. Includes an estimate for slurry, etc., recovered and disposed of otherwise than by the National Coal Board

2. As recorded in the "Overseas Trade Statistics of the United Kingdom" 3. NCB mines only.

TABLE 4. Inland consumption of coal

Thousand tons

	Total inland consumption	Fuel producers					Final Users ¹			
		Primary	Secondary				Colliery disposals			
		Collieries	Power stations ²	Coke ovens	Gas works	Other ³ conversion industries	Industry ⁴	Domestic ⁵	House Coal ⁶	Other ⁷
1973	131,288	1,359	75,628	21,543	504	3,550	11,890	12,519	1,755	2,540
1974	116,043	1,236	65,967	18,169	105	3,728	10,902	11,848	1,623	2,465
1975	120,303	1,218	73,391	18,783	9	3,999	9,532	9,844	1,609	1,918
Per cent change	+3.7	-1.5	+11.3	+3.4	-91.4	+8.4	-12.6	-16.9	-0.9	-22.2
1975 Jan-May	53,440	569	32,664	8,238	6	1,580	4,064	4,685	784	850
1976 Jan-May p	52,522	514	33,512	7,566	4	1,502	3,548	4,354	540	982
Per cent change	-1.7	-9.7	+2.6	-8.2	-33.3	-4.9	-12.7	-7.1	-31.1	+15.5
1975 Mar*	13,856	151	8,792	2,019	1	393	989	1,275	193	43
Apr	9,778	97	5,909	1,578	1	277	708	888	138	182
May	9,116	103	5,291	1,534	1	239	774	882	133	159
Total	32,750	351	19,992	5,131	3	909	2,471	3,045	464	384
1976 Mar*	13,188	138	8,321	1,822	1	367	834	1,316	131	258
Apr	9,016	87	5,482	1,502	1	279	643	759	96	167
May p	8,927	89	5,309	1,478	-	277	759	775	98	142
Total	31,131	314	19,112	4,802	2	923	2,236	2,850	325	567
Per cent change	-4.9	-10.5	-4.4	-6.4	-33.3	+1.5	-9.5	-6.4	-30.0	+47.7

1. Disposals by collieries and opencast sites. 2. Public supply and railway and transport power stations. 3. Low temperature carbonisation & patent fuel plants.

4. Prior to October 1973 the figures relate to actual consumption. 5. Prior to April 1973 the figures relate to merchants' disposals to the domestic market.

6. Including miners' coal. 7. Anthracite, dry steam coal and imported naturally smokeless fuels. 8. Mainly public administration & commerce.

TABLE 5. Stocks of coal¹ at end of period: Great Britain

Thousand tons

	Total	Distributed					Undistributed		
		Total distributed stocks	Power stations	Coke ovens	Gas works	Other	Total undistributed stocks	Collieries	Opencast sites and central stocking grounds
1970	18,729	11,627	9,575	1,434	276	342	7,102	5,266	1,836
1971	28,211	17,982	15,712	1,777	72	421	10,229	6,973	3,256
1972	29,979	19,045	16,791	1,890	50	314	10,934	7,558	3,376
1973	27,445	16,766	14,537	1,937	27	265	10,679	7,529	3,150
1974	21,462	15,577	13,414	1,822	3	338	5,885	3,946	1,939
1975 p	30,666	20,216	17,668	2,296	2	250	10,450	8,767	1,683
1975 Mar	21,323	15,839	13,231	2,311	2	295	5,484	3,898	1,586
Apr	22,112	16,487	13,875	2,323	2	287	5,625	4,088	1,537
May	23,785	17,600	15,054	2,264	2	280	6,185	4,654	1,531
1976 Mar	29,405	18,470	15,738	2,491	1	240	10,935	9,549	1,386
Apr p	30,213	19,008	16,298	2,469	1	240	11,205	9,818	1,387
May p	31,966	20,440	17,572	2,626	2	240	11,526	10,065	1,461
Absolute change:									
In latest month	+1,753	+1,432	+1,274	+157	+1	-	+321	+247	+74
On a year ago	+8,181	+2,840	+2,518	+362	-	-40	+5,341	+5,411	-70

1. Excluding distributed stocks held in merchants' yards, etc., mainly for the domestic market, and stocks held by the industrial sector.

TABLE 6. Colliery manpower and productivity at NCB mines

	Wage earners on colliery books ¹		Recruitment	Wastage	Absence percentage ²			Average output per manshift ³	
	Total	Underground			Total	Voluntary	Involuntary	Overall	At the face
	Thousands		Number	Per cent			Cwt.		
1970	283	221	25,109	41,581	19.8	4.5	15.3	44.10	141.80
1971	279	218	28,010	32,309	18.1	4.4	13.7	43.94	143.08
1972	266	210	13,255	26,114	16.6	3.9	12.7	43.78	144.35
1973	245	193	17,402	37,961	18.0	4.1	13.9	45.00	150.00
1974	246	194	26,395	25,129	16.3	4.1	12.2	42.83	..
1975	245	194	21,338	22,455	16.2	4.0	12.2	44.92	155.85
1975 Mar*	249	196	3,434	1,923	16.2	4.4	11.8	46.65	159.28
Apr	250	197	2,923	1,768	15.4	4.6	10.8	45.84	158.44
May	250	197	1,722	1,650	14.9	3.7	11.2	46.50	163.33
1976 Mar*	244	194	1,442	1,934	21.6	4.3	17.3	46.20	156.45
Apr	243	194	1,110	1,668	17.7	4.3	13.4	44.59	152.88
May p	243	193	1,422	1,496	15.1	3.2	11.9	45.44	156.20

1. At end of period. 2. The definition was changed from 1973. 3. Excluding capital working and tip coal.

Gas

TABLE 7. Sources of supply and send-out by the public gas supply system

	Natural gas supply			Other primary fuel used		Gas sent out		
	Total into system	Source ¹		Coal	Oil ²	Total	Town gas	Natural gas for direct supply
		Indigenous	Imported					
	Million therms			Thousand tons		Million therms		
1973	10,916	10,639	277	503	2,286	11,620	2,434	9,186
1974	13,102	12,861	241	105	1,256	13,451	1,598	11,853
1975	13,692	13,367	325	9	579	13,822	752	13,070
Per cent change	+4.5	+3.9	+35.0	(-)	-53.9	+2.8	-53.0	+10.3
1975 Jan-May	6,404	6,277	127	6	428	6,513	493	6,020
1976 Jan-May p	7,003	6,805	198	4	137	7,000	158	6,842
Per cent change	+9.4	+8.4	+55.9	-34.7	-67.9	+7.5	-68.0	+13.7
1975 Mar*	1,645	1,609	36	1	114	1,669	128	1,541
Apr	1,157	1,136	21	1	66	1,169	80	1,089
May	958	942	16	1	37	971	56	915
Total	3,760	3,687	73	3	217	3,809	264	3,545
1976 Mar*	1,801	1,750	51	1	31	1,804	40	1,764
Apr	1,197	1,157	40	1	18	1,199	24	1,175
May p	1,001	968	33	1	17	995	16	979
Total	3,999	3,875	124	3	66	3,998	80	3,918
Per cent change	+6.4	+5.1	+69.9	-21.6	-69.6	+5.0	-69.7	+10.5

1. Figures differ from production and imports respectively because of stock changes and small quantities not entering the public supply system.

2. Mainly naphtha (LDF), liquid petroleum gases and refinery gases.

TABLE 8. Sales of gas by the public supply system

Million therms

	Total	Power ¹ stations	Iron and steel industry	Other industries	Domestic	Other ²
1970	5,780	60	244	1,172	3,542	762
1971	7,520	263	343	2,118	3,930	866
1972	9,787	630	437	3,215	4,509	996
1973	10,729	285	396	4,150	4,815	1,083
1974	12,668	985	395	4,635	5,384	1,269
1975 p	13,112	858	371	4,645	5,891	1,347
Per cent change	+3.5	-12.9	-6.1	+0.2	+9.4	+6.1
1973 4th quarter	3,322	131	107	1,181	1,561	342
1974 1st quarter	4,092	355	110	1,215	1,979	433
2nd quarter	2,742	221	102	1,132	1,011	276
3rd quarter	2,181	198	86	1,028	696	173
4th quarter	3,653	211	97	1,260	1,698	387
1975 1st quarter p	4,390	207	101	1,281	2,329	472
2nd quarter p	2,798	200	91	1,078	1,119	310
3rd quarter p	2,067	208	79	994	615	171
4th quarter p	3,857	243	100	1,292	1,828	394
Per cent change	+5.6	+15.2	+3.1	+2.5	+7.7	+1.8

1. Public supply power stations only. 2. Public administration & commerce.

Electricity

TABLE 9. Fuel used and electricity generated by the public supply system

	Primary fuel used						Electricity generated			Own ⁵ use	Electricity supplied	Total ⁶ electricity available
	Total ¹	Coal ²	Oil ^{2 3}	Natural gas	Nuclear electricity	Hydro electricity	Total ⁴	By steam plant				
								Nuclear	Other			
Million tons of coal or coal equivalent							TWh					
United Kingdom												
1973	114.68	75.57	28.04	1.13	8.22	1.66	258.80	23.66	229.91	18.43	240.37	244.76
1974	110.49	65.97	28.51	3.86	10.28	1.81	250.47	29.40	215.73	18.07	232.40	236.68
1975 p	108.97	73.39	21.14	3.37	9.29	1.64	251.28	26.51	219.74	18.10	233.18	237.01
Per cent change	-1.4	+11.3	-25.9	-12.7	-9.6	-9.4	+0.3	-9.8	+1.9	+0.2	+0.3	+0.1
1975 Jan-Apr	41.93	27.38	9.06	1.03	3.62	0.80	96.98	10.31	84.46	6.72	90.26	91.72
1976 Jan-Apr p	40.85	28.20	6.85	1.21	3.74	0.83	95.69	10.73	82.66	6.87	88.82	90.21
Per cent change	-2.6	+3.0	-24.4	+17.6	+3.2	+3.7	-1.3	+4.0	-2.1	+2.2	-1.6	-1.6
1975 Feb	10.44	7.08	2.04	0.22	0.86	0.23	24.22	2.44	21.17	1.68	22.54	22.90
Mar*	12.61	8.79	2.30	0.23	1.10	0.17	29.26	3.13	25.64	2.01	27.25	27.67
Apr	8.73	5.91	1.72	0.21	0.81	0.08	20.21	2.30	17.62	1.42	18.79	19.06
Total	31.78	21.78	6.06	0.66	2.77	0.48	73.69	7.87	64.43	5.11	68.58	69.63
1976 Feb	10.86	7.74	1.75	0.29	0.87	0.21	25.26	2.46	22.23	1.76	23.50	23.84
Mar*	12.10	8.32	2.12	0.32	1.12	0.21	28.44	3.23	24.60	2.04	26.40	26.80
Apr p	8.30	5.48	1.47	0.27	0.91	0.17	19.63	2.65	16.51	1.44	18.19	18.50
Total	31.26	21.54	5.34	0.88	2.90	0.59	73.33	8.34	63.34	5.24	68.09	69.14
Per cent change	-1.6	-1.1	-11.9	+33.3	+4.7	+22.9	-0.5	+6.0	-1.7	+2.5	-0.7	-0.7
England and Wales												
1973	99.43	67.14	23.56	1.13	7.45	0.09	225.24	21.42	202.18	16.24	209.00	212.72
1974	96.09	58.63	24.00	3.86	9.43	0.12	218.85	26.93	190.43	15.90	202.95	205.55
1975 p	94.62	64.67	17.95	3.37	8.40	0.09	219.24	23.94	194.35	15.31	203.93	205.30
Per cent change	-1.5	+10.3	-25.2	-12.7	-10.9	-25.0	+0.2	-11.1	+2.1	-3.6	+0.5	-0.1
1975 Jan-Apr	36.36	24.13	7.79	1.03	3.32	0.05	84.59	9.44	74.73	5.80	78.79	79.27
1976 Jan-Apr p	35.25	24.83	5.73	1.21	3.42	0.04	83.00	9.72	72.99	5.74	77.26	77.85
Per cent change	-3.1	+2.9	-26.5	+17.6	+3.0	-12.8	-1.9	+3.1	-2.3	-1.0	-1.9	-1.8
1975 Feb	9.04	6.26	1.75	0.22	0.79	0.01	21.06	2.25	18.71	1.45	19.61	19.72
Mar*	11.04	7.80	1.97	0.23	1.01	0.01	25.78	2.87	22.80	1.76	24.02	24.01
Apr	7.57	5.14	1.48	0.21	0.73	0.01	17.61	2.09	15.44	1.22	16.39	16.49
Total	27.65	19.20	5.20	0.66	2.53	0.03	64.45	7.21	56.95	4.43	60.02	60.22
1976 Feb	9.37	6.81	1.47	0.29	0.79	0.01	21.91	2.24	19.60	1.49	20.42	20.65
Mar*	10.47	7.32	1.78	0.32	1.03	0.01	24.75	2.95	21.72	1.71	23.04	23.13
Apr p	7.17	4.83	1.22	0.27	0.84	0.01	17.04	2.38	14.60	1.22	15.82	15.92
Total	27.01	18.96	4.47	0.88	2.66	0.03	63.70	7.57	55.92	4.42	59.28	59.70
Per cent change	-2.3	-1.2	-14.0	+33.3	+5.1	-13.8	-1.2	+5.0	-1.8	-0.2	-1.2	-0.9

1. Including coke. 2. Including quantities used in the production of steam for sale. 3. Including oil used in gas turbine and diesel plant and for lighting up coal fired boilers. 4. Including generation by gas turbine, diesel and hydro-electric plant. 5. Used on works and for pumping at pumped storage stations. 6. Includes net imports and purchases from outside sources mainly UKAEA and British Nuclear Fuels Ltd. The England and Wales figures include net exchanges with Scotland.

TABLE 10. Sales of electricity by the public supply system

GWh

	Total	Iron and steel industry	Other industries	Domestic	Other ¹
1970	197,751	12,004	67,573	77,038	41,136
1971	203,433	10,837	69,337	80,674	42,585
1972	210,417	10,774	68,967	86,889	43,787
1973	225,267	11,646	75,327	91,299	46,995
1974	218,335	11,292	70,927	92,499	43,617
1975 p	218,431	11,172	70,968	89,273	47,018
Per cent change	+0.0	-1.1	+0.1	-3.5	+7.8
1973 4th quarter	61,608	2,980	19,216	26,224	13,188
1974 1st quarter	59,544	2,668	15,747	30,264	10,865
2nd quarter	50,384	2,871	18,124	19,637	9,752
3rd quarter	45,261	2,727	17,495	15,726	9,313
4th quarter	63,146	3,026	19,561	26,872	13,687
1975 1st quarter p	66,100	3,105	18,644	30,427	13,924
2nd quarter p	50,413	2,734	17,238	19,880	10,561
3rd quarter p	42,121	2,409	16,213	14,263	9,236
4th quarter p	59,797	2,924	18,873	24,703	13,297
Per cent change	-5.3	-3.4	-3.5	-8.1	-2.8

1. Mainly commerce, public administration & agriculture.

Petroleum

TABLE 11. Production, arrivals and shipments¹

Thousand tonnes

	Crude Petroleum						Petroleum products				
	Gross ² Indigenous Production	Refinery Receipts				Arrivals ^{4,5}	Shipments ^{4,5}	Arrivals ⁴	Shipments ⁴	Net Arrivals	Bunkers ⁶
		Total	Indigenous ²	Net arrivals	Other ³						
1973	373	114,032	235	+112,237	1,560	115,472	3,235	17,808	16,681	+1,127	5,499
1974	410	113,478	250	+111,418	1,810	112,822	1,404	14,256	14,396	-140	4,759
1975 p	1,564	92,273	1,156	+ 89,842	1,275	91,366	1,524	12,449	13,664	-1,215	3,447
Per cent change	(+)	-18.7	(+)	-19.3	-29.5	-19.0	+8.6	-15.7	-5.1	(-)	-27.6
1975 Jan-Apr	173	30,957	102	30,500	355	30,870	370	4,693	3,864	+829	1,209
1976 Jan-Apr p	1,967	31,943	1,856	29,585	502	30,288	703	4,252	4,557	-305	1,096
Per cent change	(+)	+3.2	(+)	-3.0	+41.4	-1.9	+90.0	-9.4	+17.9	(-)	-9.3
1975 Feb	42	7,680	24	+ 7,554	102	7,752	198	1,093	948	+145	318
Mar	44	6,581	25	+ 6,520	36	6,559	39	970	1,036	-66	284
Apr	41	7,763	25	+ 7,662	76	7,685	23	1,137	873	+264	298
Total	127	22,024	74	+ 21,736	214	21,996	260	3,200	2,857	+343	900
1976 Feb	434	8,089	385	+ 7,576	128	7,738	162	1,112	1,127	-15	280
Mar	535	7,656	480	+ 7,030	146	7,134	104	1,423	1,091	+332	285
Apr p	644	8,495	619	+ 7,760	116	7,947	187	935	1,353	-418	234
Total	1,613	24,240	1,484	+ 22,366	390	22,819	453	3,470	3,571	-101	799
Per cent change	(+)	+10.1	(+)	+2.9	+82.2	+3.7	+74.2	+8.4	+25.0	(-)	-11.2

1. Calendar months. 2. Including natural gas liquids (condensates). 3. Mainly recycled products. 4. Foreign trade as recorded by the Petroleum Industry and may differ from figures published in *Overseas Trade Statistics*. 5. Including process (partly refined) oils. 6. International bunkers.

TABLE 12. Refinery throughput and output of petroleum products¹

Thousand tonnes

	Through- put of crude and process oils	Refinery use		Total output of petrol- eum pro- ducts ²	Gases		Naphtha (LDF)	Motor spirit	Kerosene		Gas/ diesel oil	Fuel oil	Lubri- cating oils	Bitumen
		Fuel	Losses		Butane and propane	Other petro- leum			Aviation turbine fuel	Burning oil ³				
1973	114,338	7,053	1,331	105,954	1,655	394	6,607	14,842	4,550	2,717	27,853	42,026	1,477	2,225
1974	111,217	6,946	1,211	103,060	1,602	272	6,448	14,520	4,475	2,564	27,641	40,022	1,455	2,129
1975	93,579	6,031	901	86,647	1,447	151	3,968	13,940	3,959	2,299	23,324	32,711	1,141	2,099
Per cent change	-15.9	-13.2	-25.6	-15.9	-9.7	-44.4	-38.5	-4.0	-11.5	-10.4	-15.6	-18.3	-21.6	-1.4
1975 Jan-Apr	31,721	2,003	365	29,353	500	59	1,463	4,385	1,268	921	7,505	11,696	426	632
1976 Jan-Apr p	32,569	2,164	326	30,079	574	57	1,594	4,745	1,273	1,027	8,382	10,670	429	617
Per cent change	+2.7	+8.1	-10.6	+2.5	+14.8	-4.6	+9.0	+8.2	+0.4	+11.5	+11.7	-8.8	+0.7	-2.4
1975 Feb	7,348	470	85	6,793	109	13	342	931	276	212	1,736	2,725	102	176
Mar	7,631	489	115	7,027	120	18	292	1,080	335	243	1,674	2,826	105	190
Apr	7,527	495	56	6,976	137	13	327	1,168	291	187	1,786	2,671	101	163
Total	22,506	1,454	256	20,796	366	44	961	3,179	902	642	5,196	8,222	308	529
1976 Feb	7,637	522	110	7,005	141	15	435	1,128	268	283	1,961	2,336	107	162
Mar	8,241	548	82	7,611	139	16	384	1,207	362	262	2,142	2,607	124	176
Apr p	8,291	535	74	7,682	137	11	373	1,232	333	220	2,132	2,784	104	158
Total	24,169	1,605	266	22,298	417	42	1,192	3,567	963	765	6,235	7,727	335	496
Per cent change	+7.4	+10.4	+3.9	+7.2	+13.9	-4.5	+24.0	+12.2	+6.8	+19.2	+20.0	-6.0	+8.8	-6.2

1. Calendar months. 2. Including output of products not shown separately, namely, aviation spirit, wide cut gasoline, industrial and white spirits, paraffin wax and miscellaneous products. 3. Including vaporising oil.

TABLE 13. Deliveries of petroleum products for inland consumption¹

Thousand tonnes

	Total ^{2 3}	Butane ⁴ and propane	Naphtha (LDF) ⁵	Motor spirit	Kerosene				Gas/diesel oil		Fuel oil	Lubri- cating oils	Bitumen
					Aviation turbine fuel	Burning oil							
						Premier	Standard						
							Domestic	Other ⁶					
1973	99,344	1,600	8,373	16,927	4,202	778	1,931	501	5,658	15,100	39,447	1,185	2,458
1974	92,342	1,414	7,700	16,484	3,690	603	1,770	436	5,518	13,581	36,810	1,045	2,241
1975	81,667	1,275	5,116	16,125	3,834	538	1,707	400	5,414	13,050	30,470	992	2,089
Per cent change	−11.6	−9.9	−33.6	−2.2	+3.9	−10.8	−3.5	8.2	−1.9	−3.9	−17.4	−5.1	−6.7
1975 Jan-Apr	30,582	478	1,902	4,972	1,116	266	742	153	1,788	5,338	12,621	326	657
1976 Jan-Apr p	29,570	479	1,886	5,270	1,192	291	735	164	1,847	5,450	11,048	314	619
Per cent change	−3.3	+0.2	−8.4	+6.0	+6.8	+9.4	−0.9	+7.2	+3.3	+2.1	−12.5	−3.7	−5.8
1975 Feb	7,313	115	488	1,146	239	69	180	38	432	1,308	3,012	78	160
Mar	7,351	117	461	1,265	287	69	187	38	433	1,325	2,856	75	170
Apr	7,505	125	379	1,364	300	60	196	40	480	1,332	2,905	87	183
Total	22,169	357	1,328	3,775	826	198	563	116	1,345	3,965	8,773	240	513
1976 Feb	7,413	121	473	1,203	279	94	204	44	443	1,438	2,823	72	145
Mar	7,970	129	466	1,384	308	77	210	46	501	1,507	2,993	84	189
Apr p	7,052	110	489	1,462	306	43	153	36	474	1,178	2,503	82	155
Total	22,435	360	1,428	4,049	893	214	567	126	1,418	4,123	8,319	238	489
Per cent change	+1.2	+0.8	+7.5	+7.3	+8.1	+8.0	+0.7	+8.6	+5.4	+4.0	−5.2	−0.8	−4.7

1. Calendar months. 2. Including other petroleum gases, aviation spirit, wide-cut gasoline, industrial & white spirits, and paraffin wax.

3. Excluding refinery fuel and miscellaneous products. 4. Including very small amounts for petro-chemicals. 5. Now mainly for petrochemical feedstock. 6. Including vaporising oil.

TABLE 14. Inland deliveries of petroleum products used for energy^{1 2}

Thousand tonnes

	Total	Power ³ Stations	Gas Works	Iron and steel industry	Other Industries	Transport ⁴	Domestic	Other ⁵
1970	81,017	12,878	4,709	5,673	21,090	25,023	3,048	8,596
1971	81,863	15,058	2,706	5,292	21,068	26,043	3,015	8,681
1972	87,788	19,039	2,249	5,044	21,899	27,152	3,485	8,920
1973	88,196	16,993	2,355	4,995	22,045	28,971	3,812	9,025
1974	81,547	17,240	1,339	4,019	19,695	27,930	3,378	7,946
1975 p	73,385	13,326	693	3,309	17,251	27,582	3,270	7,954
Per cent change	-10.0	-22.7	-48.2	-17.7	-12.4	-1.2	-3.2	+0.5
1975 Jan	7,652	1,989	110	390	1,798	2,119	359	887
Feb	6,633	1,291	111	374	1,674	2,000	356	827
Mar	6,653	1,185	86	333	1,656	2,179	366	848
Total	20,938	4,465	307	1,097	5,128	6,298	1,081	2,562
1976 Jan	6,441	1,053	54	262	1,736	2,090	354	892
Feb	6,677	1,045	45	284	1,812	2,100	415	976
Mar p	7,180	1,151	42	317	1,859	2,379	411	1,021
Total	20,298	3,249	141	863	5,407	6,569	1,180	2,889
Per cent change	-3.1	-27.2	-54.1	-21.3	+5.4	+4.3	+9.2	+12.8

1. Calendar months. 2. Excludes non-energy products and non-energy use of naphtha (LDF).

3. Public supply, railway and transport power stations. 4. Including fishing, coastal and inland shipping.

5. Mainly public administration, commerce and agriculture.

TABLE 15. Stocks of petroleum at end of month

	Held by oil companies ¹		Power stations ²
	Million tonnes	Estimated days' supply ³	Million tonnes
1975 Mar	22.5	103	0.85
Apr	22.0	113	0.86
May	21.8	115	0.76
1976 Mar	18.8	85	0.89
Apr	19.0	93	0.81
May p	19.9	100	0.82

1. Stocks of petroleum products plus the product equivalent of crude and process oils held at refineries, and products in the wholesale distribution system. 2. Fuel oil held at main oil burning stations in Great Britain.

3. Latest three months calculated on forecast deliveries for the ensuing months. Figures for earlier period calculated on actual deliveries.

APPROXIMATE CONVERSION FACTORS

(last digit rounded to nought or five)

To convert from one fuel to another, multiply by the factor shown

From To	Million tons coal equiv.	Million tonnes oil equiv.	Million therms	TWh Electrical energy	TWh Electricity generated
Million tons coal equivalent	1	1.65	0.00390	0.135 ¹	0.500 ²
Million tonnes oil equivalent	0.600	1	0.00235	0.0800 ¹	0.280 ²
Million therms	255	425	1	34.0	115
TWh Electrical energy	7.45	12.5	0.0295	1	..
TWh Electricity generated	2.00 ³	3.60 ³	0.00880 ³	..	1

1. The amount of fuel (average grade) equivalent to 1 TWh of energy.

2. The amount of primary fuel (power station grade) to generate 1 TWh.

3. The amount of electricity generated by one million units of the fuel shown.

The Digest of UK Energy Statistics 1975 gives more detailed factors.

SUPPLEMENTARY DATA

Electricity generated outside the public electricity supply system in Great Britain⁽¹⁾

GWh

	Total	Industry										Transport under- takings
		Total Industry	Iron and steel	Engin- eering and other metal trades	Food drink and tobacco	Coal mining	Chemical and allied trades		Textiles, leather and clothing	Paper, printing and stationery	Other industries (including gas and water works)	
							Nuclear ² power stations	Other ³				
1970	20,879	20,215	2,700	1,508	375	478	4,142	6,846	564	2,965	637	664
1971	20,769	20,092	2,728	1,344	410	465	4,339	6,987	535	2,671	613	677
1972	20,916	20,223	2,587	1,320	409	512	4,098	7,408	458	2,786	645	693
1973	23,170	22,467	2,707	2,716	458	484	4,339	7,859	498	2,763	648	703
1974	22,775	22,126	2,180	3,139	521	438	4,222	7,904	450	2,598	674	649
1975	20,878	20,189	1,660	3,319	435	433	3,820	7,305	406	2,138	673	689
Per cent change	-8.3	-8.8	-23.9	+5.7	-16.5	-1.1	-9.5	-7.6	-9.8	-17.7	-0.1	+6.3
1974 1st quarter	6,467	6,293	675	771	160	79	1,223	2,314	139	728	204	174
2nd quarter	5,552	5,392	505	785	70	122	1,075	1,903	128	649	155	160
3rd quarter	5,121	4,971	464	777	70	104	1,030	1,711	99	575	141	150
4th quarter	5,635	5,470	536	806	221	133	894	1,976	84	646	174	165
1975 1st quarter p	5,823	5,645	586	873	110	129	1,087	1,998	106	570	185	178
2nd quarter p	4,900	4,731	369	825	61	119	828	1,738	104	525	162	169
3rd quarter p	4,628	4,465	294	802	67	106	829	1,670	98	453	146	163
4th quarter p	5,527	5,348	411	819	197	79	1,075	1,899	98	590	180	179
1976 1st quarter p	5,957	5,770	480	852	100	74	1,098	2,263	115	599	189	187
Per cent change	+2.3	+2.2	-18.1	-2.4	-9.1	-42.6	+1.0	+13.3	+8.5	+5.1	+2.2	+5.1

1. Excludes electricity generated by commerce, public administration etc. 2. Generated by UKAEA and British Nuclear Fuels Ltd. for the public electricity supply system. 3. Including production by the oil refining industry.