

Total oil deliveries lower in April

Total energy

Coal consumption well up

During the three month period February to April, total inland energy consumption measured on a primary fuel input basis was 7.4 per cent higher than in the comparable period last year. Coal and petroleum consumption were higher by 8.9 and 3.6 per cent respectively while the use of natural gas rose by 14.5 per cent. By far the greater part of the increase in total consumption took place in the first two months of the period, but although April was warmer than a year ago consumption during the month continued to run marginally ahead of last year with higher consumption of coal, mainly for electricity generation, offsetting lower oil consumption. Deliveries of petroleum in April for energy use were about five per cent lower than a year ago although the seasonally adjusted and temperature corrected series indicates a rather smaller reduction of about 3½ per cent on the level of April 1978.

Coal

Power station use up 15 per cent

Total coal production in the three month period March to May was 32.4 million tonnes compared with 33.1 million tonnes in the comparable period last year, a decline of 2.3 per cent. Deep-mined production was down by 1.9 per cent and opencast output down by 5.9 per cent.

Total coal consumption during the March to May period was 11.5 per cent higher than a year previously. Although the 15.4 per cent increase in power station consumption accounted for the bulk of the increase, colliery disposals to industry rose by 12.3 per cent, while for the domestic heating market there was a small rise in housecoal. Disposals of anthracite and dry steam coal were also high, rising by nearly one fifth.

Coal stocks at the end of May totalled 28 million tonnes, 3.2 million tonnes less than a year ago. The seasonal increase of power station stocks commenced during the month, rising by ½ million tonnes to 12.4 million tonnes, 5.8 million tonnes less than was held at the end of May 1978.

Gas

Larger share for imported gas

Total natural gas supplied into the public supply system in the three month period March to May was 4,962 million therms, an increase of 13.4 per cent on the corresponding period of last year. Approximately 17 per cent of the total supply was imported gas, mainly from the Norwegian sector of the Frigg gasfield, although supplies from the United Kingdom Continental Shelf were also higher by 2.7 per cent.

Electricity

Reduced oil use in April

Total electricity supplied in the UK during the three months February to April was 75.4 TWh, 6.9 per cent higher than in the corresponding months last year. However, the increases were confined to February and March, and in April, total electricity supplied was slightly lower than a year ago. Total fuel used for generation rose slightly faster than electricity supplied with coal use maintained at a high level, 12.2 per cent up during February to April. In contrast the use of oil was only 1.9 per cent up and was well below last year's level in April.

Petroleum

Recent drop in fuel oil deliveries

Gross indigenous production of crude oil in the three month period February to April was 17.1 million tonnes, more than half as much again as in the comparable months of 1978.

Total inland deliveries of petroleum products in the February to April period were 23.2 million tonnes, an increase of 3.5 per cent on the previous year. In April however, total deliveries were below last year's level by 4.4 per cent, due mainly to a sharp reduction in demand for fuel oil for electricity generation. April deliveries of gas/diesel oil other than derv fell by 5.5 per cent but there were increases of 2.9 and 8.7 per cent in derv fuel and aviation turbine fuel. Motor spirit deliveries in April were 4.8 per cent higher than in April last year, much the same rate of increase as has been evident in the year to date.

Supplementary data

Industrial fuel prices

Whereas in 1978 prices of oil products were falling, during the 1st quarter of 1979 the average prices of all fuels delivered to industrial consumers showed increases. These ranged from a rise of 2.8 per cent for heavy fuel oil to six per cent for electricity and 7.9 per cent for gas oil. Prices realised in new and renewed contracts also moved higher, particularly those for gas oil, which increased by over 12 per cent.

Enclosed with this edition of Energy Trends is a copy of the 1979 pocket-sized card containing a selection from the statistics covering the last ten years that will be found in the Digest of United Kingdom Energy Statistics 1979 (due to be published at the end of July).

This Bulletin is prepared by the Economics and Statistics Division of the Department of Energy. Further copies of the Bulletin are available from Circulation Section (H), Central Office of Information (COI) Hercules Road, London SE1 7DU. Telephone: 01-928 2345.

Recipients should notify the COI of any change of address or of requirement.

Figures for the latest periods and the corresponding averages or totals are provisional and are liable to subsequent revision.

The figures have not been adjusted for temperature or seasonal factors except where noted in Table 1. Monthly figures relate to four week periods except where otherwise indicated.

Percentage changes relate to the corresponding period a year ago. These comparisons can be affected by calendar difference, especially during periods of rapid change.

They are calculated from unrounded figures but are shown only as (+) or (−) when the percentage change is very large. All figures relate to the United Kingdom unless otherwise indicated.

Total energy

TABLE 1. Inland energy consumption: primary fuel input basis

	Total	Coal ¹	Petroleum ²	Natural ³ gas	Nuclear electricity	Hydro-electricity
<i>Million tonnes of coal or coal equivalent</i>						
1975	324.8	120.0	136.5	55.4	10.9	2.0
1976	329.8	122.0	134.2	58.8	12.9	1.9
1977	338.4	122.7	136.6	62.8	14.3	2.0
1978	339.8	119.9	139.3	65.1	13.4	2.1
Per cent change	+0.1	-2.5	+1.9	+2.5	-6.2	+1.2
1978 Jan–Apr	127.1	43.9	49.5	27.6	5.3	0.8
1979 Jan–Apr p	136.2	46.9	51.5	31.8	5.3	0.7
Per cent change	+7.2	+6.9	+4.1	+15.3	-0.4	-13.3
1978 Feb	32.1	11.2	12.2	7.1	1.4	0.2
Mar*	35.6	12.1	14.1	7.5	1.6	0.3
Apr	28.3	9.7	11.4	5.9	1.1	0.2
Total	96.0	33.0	37.7	20.5	4.1	0.7
1979 Feb	34.5	11.6	13.3	8.1	1.4	0.1
Mar*	40.0	14.0	15.0	9.2	1.5	0.3
Apr p	28.4	10.3	10.8	6.1	1.0	0.2
Total	102.9	35.9	39.1	23.4	3.9	0.6
Per cent change	+7.4	+8.9	+3.6	+14.5	-1.8	-12.2

Seasonally adjusted and temperature corrected⁴ (annual rates)

1978 Jan–Apr	334.4	117.7	135.1	65.4	14.3	1.9
1979 Jan–Apr p	350.9	124.2	138.4	72.3	14.3	1.7
Per cent change	+4.9	+5.5	+2.5	+10.6	+0.5	-14.9
1978 Feb	329.7	117.3	133.3	62.5	15.1	1.5
Mar*	335.7	118.4	133.9	67.2	13.9	2.3
Apr	342.3	119.5	140.3	67.1	13.0	2.4
Average	336.0	118.4	135.7	65.8	14.0	2.1
1979 Feb	348.8	117.0	143.9	71.4	15.2	1.3
Mar*	354.1	126.8	128.3	73.9	13.1	2.0
Apr p	357.3	132.7	135.4	73.8	13.6	1.8
Average	353.5	125.7	139.1	73.1	13.9	1.7
Per cent change	+5.2	+6.1	+2.5	+11.2	-0.7	-17.7

So that short-term data can be more accurately compared, monthly coal figures for 1978 in the top half of Table 1 and in Tables 3-6 inclusive have been adjusted to account for certain calendar differences between 1978 and 1979.

Symbols used in the tables

- .. not available.
- nil or less than half the final digit shown.
- * five-week period.
- p provisional.

	Total	Coal ¹	Petroleum ²	Natural ³ gas	Nuclear electricity	Hydro-electricity
<i>Million tonnes of oil or oil equivalent</i>						
1975	191.1	70.6	80.3	32.6	6.4	1.2
1976	194.0	71.8	78.9	34.6	7.6	1.1
1977	199.0	72.2	80.3	36.9	8.4	1.2
1978	199.9	70.5	82.0	38.3	7.9	1.2
Per cent change	+0.1	-2.5	+1.9	+2.5	-6.2	+1.2
1978 Jan–Apr	74.7	25.8	29.1	16.2	3.1	0.5
1979 Jan–Apr p	82.1	27.6	30.3	18.7	3.1	0.4
Per cent change	+7.2	+6.9	+4.1	+15.3	-0.4	-13.3
1978 Feb	18.9	6.6	7.2	4.2	0.8	0.1
Mar*	20.9	7.1	8.3	4.4	0.9	0.2
Apr	16.6	5.7	6.7	3.4	0.7	0.1
Total	56.4	19.4	22.2	12.0	2.4	0.4
1979 Feb	20.3	6.8	7.8	4.8	0.8	0.1
Mar*	23.6	8.3	8.8	5.4	0.9	0.2
Apr p	16.7	6.0	6.4	3.6	0.6	0.1
Total	60.6	21.1	23.0	13.8	2.3	0.4
Per cent change	+7.4	+8.9	+3.6	+14.5	-1.8	-12.2

1978 Jan–Apr	196.7	69.2	79.5	38.5	8.4	1.1
1979 Jan–Apr p	206.4	73.1	81.4	42.5	8.4	1.0
Per cent change	+4.9	+5.5	+2.5	+10.6	+0.5	-14.9
1978 Feb	193.9	69.0	78.4	36.7	8.9	0.9
Mar*	197.5	69.7	78.8	39.5	8.2	1.3
Apr	201.3	70.3	82.5	39.4	7.7	1.4
Average	197.6	69.7	79.8	38.7	8.2	1.2
1979 Feb	205.2	68.8	84.7	42.0	8.9	0.8
Mar*	208.3	74.6	81.4	43.4	7.7	1.2
Apr p	210.2	78.1	79.6	43.4	8.0	1.1
Average	207.9	73.9	81.8	43.0	8.2	1.0
Per cent change	+5.2	+6.1	+2.5	+11.2	-0.7	-17.7

1. Consumption by fuel producers plus colliery disposals to final users, plus (for annual figures only) net foreign trade and stock change in other solid fuels.
2. Refinery throughput of crude oil, plus net foreign trade and stock change in petroleum products, less deliveries of non-energy products.
3. Excluding gas flared or reinjected.
4. Coal, petroleum and natural gas are temperature corrected.

Energy: Total inland consumption (primary fuel input basis)¹

MILLION TONNES
COAL EQUIVALENT

MILLION TONNES
OIL EQUIVALENT

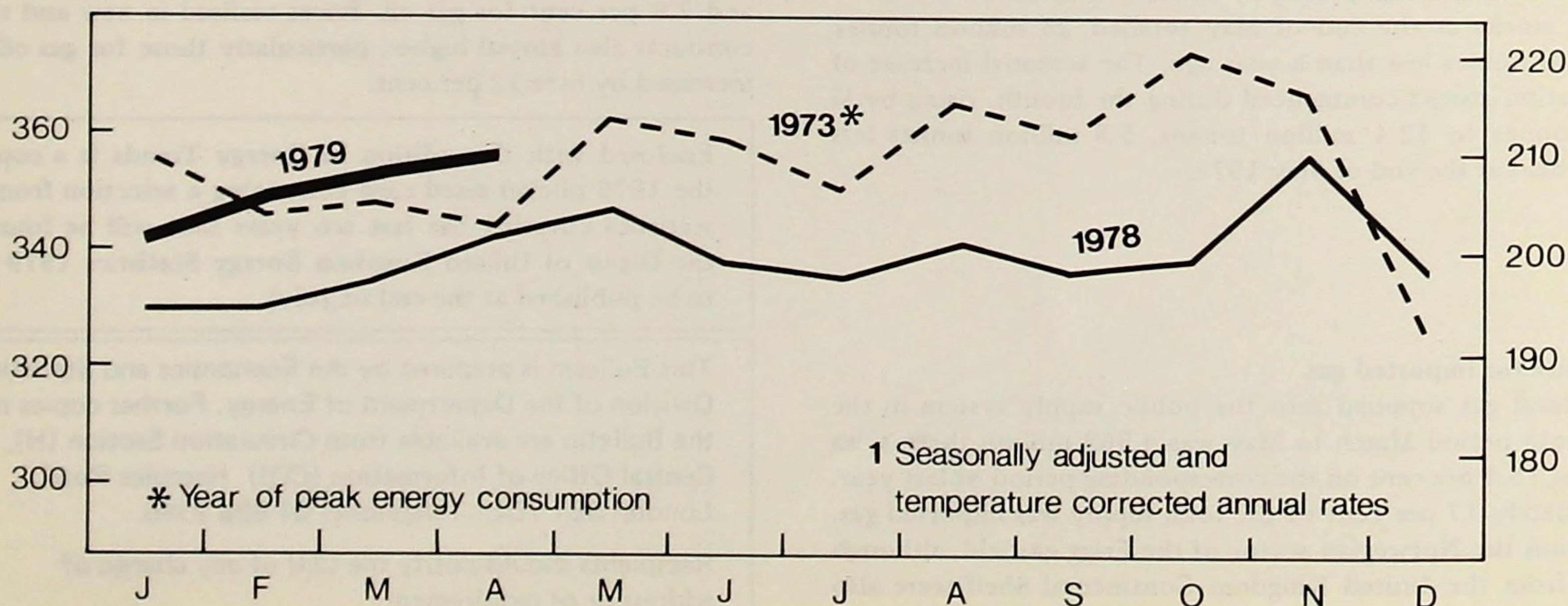


TABLE 2. Supply and use of fuels

Million therms

	1977	1978p	Per cent change	1976	1977				1978p				Per ¹ cent change
				4th quarter	1st quarter	2nd quarter	3rd quarter	4th quarter	1st quarter	2nd quarter	3rd quarter	4th quarter	
PRIMARY FUELS AND EQUIVALENTS:													
Production of primary fuels													
Coal	29,682	29,964	+1.0	8,147	7,604	7,514	6,405	8,159	7,643	7,427	6,502	8,392	+2.9
Petroleum ²	16,350	23,098	+41.3	2,277	3,305	4,214	4,337	4,494	4,839	5,701	5,846	6,712	+49.4
Natural gas ³	15,024	14,387	-4.2	4,517	4,916	3,459	2,497	4,152	4,998	3,265	2,294	3,830	-7.8
Primary electricity	3,761	3,567	-5.2	929	1,070	877	852	962	1,127	794	720	926	-3.7
Total	64,817	71,016	+9.6	15,870	16,895	16,064	14,091	17,767	18,607	17,187	15,362	19,860	+11.8
Arrivals, Petroleum ⁴	35,730	4,035	-4.7	11,073	9,615	9,116	8,253	8,746	8,900	8,248	7,853	9,034	+3.3
Other	1,366	2,578	(+)	226	195	199	371	601	629	458	509	982	(+)
Shipments	13,841	17,253	+24.7	2,856	2,973	3,651	3,886	3,331	3,498	4,031	4,834	4,890	+46.8
Bunkers	1,168	1,190	+1.9	370	316	309	292	251	240	280	321	349	+39.0
Stock change ⁵													
Solid fuels	+238	-543		+262	+1,252	-385	-194	-435	+459	-483	-369	-150	
Crude Petroleum	+555	-492		-511	+375	-352	+253	+279	+92	-427	+326	-483	
Petroleum products	+424	+169		+390	+564	-225	-309	+394	+185	+215	-480	+249	
Non-energy use	4,175	4,067	-2.6	1,040	1,073	1,059	1,060	983	1,021	1,027	1,047	972	-1.0
Statistical difference ⁶	-266	-250		+21	-387	+268	-59	-88	+123	-142	+81	-312	
Total primary ¹ energy input	83,680	84,003	+0.4	23,065	24,147	19,666	17,168	22,699	24,236	19,718	17,080	22,969	+1.2
Conversion losses etc. ³	25,148	24,812	-1.3	6,967	7,274	5,854	5,263	6,757	7,099	5,796	5,246	6,671	-1.3
Final energy consumption	58,532	59,191	+1.1	16,098	16,873	13,812	11,905	15,942	17,137	13,922	11,834	16,298	+2.2
FINAL CONSUMPTION BY USER													
Iron and steel industry													
Coal	66	50	-24.2	20	23	15	10	18	16	11	9	14	-22.2
Other solid fuel ⁹	2,394	2,239	-6.5	703	663	593	600	538	563	579	491	606	+12.6
Other coal-derived fuels ¹⁰	362	318	-12.2	97	94	89	95	84	78	89	69	82	-2.4
Gas ¹¹	485	446	-8.0	119	128	125	113	119	118	113	110	105	-11.8
Electricity	389	411	+5.7	109	104	96	92	97	106	106	93	106	+9.3
Petroleum	1,205	1,161	-3.6	346	352	286	256	311	336	285	233	307	-1.3
Total	4,901	4,625	-5.6	1,394	1,364	1,204	1,166	1,167	1,217	1,183	1,005	1,220	+4.5
Other industries													
Coal	2,295	2,184	-4.8	696	618	530	483	664	623	507	402	652	-1.8
Other solid fuel ⁹	156	143	-8.3	37	38	38	35	45	41	26	33	43	-4.4
Other coal-derived fuels ¹⁰	74	70	-5.4	15	19	23	19	13	20	17	18	15	+15.4
Gas ¹¹	5,458	5,574	+2.1	1,466	1,431	1,373	1,171	1,483	1,536	1,425	1,169	1,444	-2.6
Electricity	2,411	2,455	+1.8	638	645	599	559	608	648	607	568	632	+3.9
Petroleum	7,520	7,396	-1.6	2,090	2,245	1,774	1,428	2,073	2,146	1,698	1,349	2,203	+6.3
Total	17,914	17,822	-0.5	4,942	4,996	4,337	3,695	4,886	5,014	4,280	3,539	4,989	+2.1
Transport sector													
Coal and other solid fuel	20	21	+5.0	8	6	4	3	7	6	4	4	7	-
Electricity	100	102	+2.0	26	26	26	23	25	27	25	24	26	+4.0
Petroleum	12,931	13,602	+5.2	3,177	2,988	3,218	3,420	3,305	3,046	3,456	3,635	3,465	+4.8
Total	13,051	13,725	+5.2	3,211	3,020	3,248	3,446	3,337	3,079	3,485	3,663	3,498	+4.8
Domestic sector													
Coal	3,230	2,968	-8.1	811	850	773	703	904	761	724	647	836	-7.5
Other solid fuel ⁹	843	768	-8.9	188	227	204	223	189	189	194	193	192	+1.6
Gas ¹¹	6,590	7,261	+10.2	2,050	2,413	1,371	771	2,035	2,808	1,393	866	2,194	+7.8
Electricity	2,932	2,928	-0.1	863	972	638	511	811	965	636	517	810	-0.1
Petroleum	1,450	1,422	-1.9	472	518	295	205	432	520	277	201	424	-1.8
Total	15,045	15,347	+2.0	4,384	4,980	3,281	2,413	4,371	5,243	3,224	2,424	4,456	+1.9
Other final users ¹²													
Coal	544	516	-5.1	158	166	118	83	177	168	118	85	145	-18.1
Other solid fuel ⁹	166	153	-7.8	34	50	36	45	35	40	37	38	38	+8.6
Gas ¹¹	1,587	1,744	+9.9	464	561	380	180	466	643	404	208	489	+4.9
Electricity	1,689	1,780	+5.4	465	495	386	346	462	519	403	363	495	+7.1
Petroleum	3,635	3,479	-4.3	1,046	1,241	822	531	1,041	1,214	788	509	968	-7.0
Total	7,621	7,672	+0.7	2,167	2,513	1,742	1,185	2,181	2,584	1,750	1,203	2,135	-2.1
Total final users	58,532	59,191	+1.1	16,098	16,873	13,812	11,905	15,942	17,137	13,922	11,834	16,298	+2.2
FINAL CONSUMPTION BY FUEL													
Coal	6,154	5,739	-6.7	1,692	1,663	1,440	1,282	1,769	1,574	1,364	1,147	1,654	-6.5
Other solid fuel ⁹	3,560	3,303	-7.2	963	978	871	903	808	833	836	755	879	+8.8
Other coal-derived fuels ¹⁰	436	388	-11.0	112	113	112	114	97	98	106	87	97	-
Gas ¹¹	14,120	15,025	+6.4	4,099	4,533	3,249	2,235	4,103	5,105	3,335	2,353	4,232	+3.1
Electricity	7,521	7,676	+2.1	2,101	2,242	1,745	1,531	2,003	2,265	1,777	1,565	2,069	+3.3
Petroleum	26,741	27,060	+1.2	7,131	7,344	6,395	5,840	7,102	7,262	6,504	5,927	7,367	+3.7
Total all fuels	58,532	59,191	+1.1	16,098	16,873	13,812	11,905	15,942	17,137	13,922	11,834	16,298	+2.2

1. Per cent change on the corresponding period of the previous year. 2. Crude petroleum and natural gas liquids. 3. Excluding gas flared or reinjected. 4. Crude petroleum, process oils and petroleum products. 5. Stock fall (+) stock rise (-). 6. Supply greater than recorded demand (-). 7. Thermal equivalent of total inland energy consumption in Table 1. A more detailed analysis of the annual figures is shown in the Digest of United Kingdom Energy Statistics 1978 Tables 9 and 13. 8. Losses in conversion and distribution and used by fuel industries. 9. Coke and other manufactured solid fuels. 10. Coke oven gas, creosote/pitch mixtures and other liquid fuels derived from coal. 11. Natural gas supplied direct, and town gas. 12. Mainly public administration, commerce and agriculture.

Coal

TABLE 3. Supply

Thousand tonnes

	Net inland supply	Production			Net imports	Imports ²	Exports ²	Tonnage lost (deep-mined) ³	
		Total ¹	Deep-mined	Opencast				Recognised holidays and rest days	Disputes
1975	131,583	128,682	117,411	10,414	+2,901	5,083	2,182	12,300	352
1976	125,201	123,800	110,264	11,944	+1,401	2,837	1,436	12,345	1,157
1977	122,648	122,150	107,123	13,551	+498	2,439	1,941	12,457	814
1978	123,663	123,577	107,528	14,167	+86	2,352	2,266	12,606	1,497
Per cent change	+0.8	+1.2	+0.4	+4.5	-82.7	-3.6	+16.7	+1.2	+83.9
1978 Jan-May	54,032	53,783	47,597	5,536	+249	1,064	815	2,039	848
1979 Jan-May p	..	51,393	45,780	5,015	2,045	427
Per cent change	..	-4.4	-3.8	-9.4	+0.3	-49.6
1978 Mar*	12,485	12,480	11,000	1,305	+5	210	205	1,038	162
Apr	10,998	10,977	9,638	1,214	+21	153	132	—	150
May	9,746	9,682	8,487	1,095	+64	223	159	560	367
Total	33,229	33,139	29,125	3,614	+90	586	496	1,598	679
1979 Mar*	..	13,226	11,752	1,372	—	52
Apr	..	9,341	8,166	974	933	115
May p	..	9,801	8,646	1,053	455	80
Total	..	32,368	28,564	3,899	1,388	247
Per cent change	..	-2.3	-1.9	-5.9	-13.1	-63.6

1. Includes an estimate for slurry, etc., recovered and disposed of otherwise than by the National Coal Board. 2. As recorded in the "Overseas Trade Statistics of the United Kingdom". 3. NCB only.

TABLE 4. Inland consumption of coal

Thousand tonnes

	Total inland consumption	Fuel producers					Final users ¹			
		Primary	Secondary				Colliery disposals			
		Collieries	Power stations ²	Coke ovens	Gas works	Other ³ conversion industries	Industry	Domestic	Other ⁶	
								House coal ⁴	Other ⁵	
1975	122,216	1,238	74,569	19,085	10	4,063	9,685	9,915	1,703	1,948
1976	123,603	1,132	77,818	19,401	8	3,405	8,970	9,450	1,374	2,045
1977	123,978	1,124	79,956	17,406	7	3,166	9,033	9,635	1,503	2,148
1978	120,477	1,010	80,643	14,946	6	3,064	8,550	8,699	1,518	2,041
Per cent change	-2.8	-10.1	+0.9	-14.1	-14.3	-3.2	-5.3	-9.7	+1.0	-5.0
1978 Jan-May	52,718	497	35,532	6,119	3	1,227	3,904	3,802	612	1,022
1979 Jan-May p	56,705	445	39,774	5,900	4	1,218	3,941	3,800	608	1,015
Per cent change	+7.6	-10.5	+11.9	-3.6	+33.3	-0.7	+0.9	-0.1	-0.7	-0.7
1978 Mar*	12,111	117	8,058	1,473	1	276	871	895	156	264
Apr	9,697	99	6,432	1,184	—	227	702	767	111	175
May	8,862	84	5,776	1,155	—	238	655	698	109	147
Total	30,670	300	20,266	3,812	1	741	2,228	2,360	376	586
1979 Mar* p	14,089	115	9,720	1,414	1	298	1,086	1,019	167	269
Apr p	10,282	78	7,063	1,206	—	232	719	682	142	160
May p	9,830	71	6,594	1,206	1	248	698	724	140	148
Total	34,201	264	23,377	3,826	2	778	2,503	2,425	449	577
Per cent change	+11.5	-12.0	+15.4	+0.4	(+)	+5.0	+12.3	+2.8	+19.4	-1.5

1. Disposals by collieries and opencast sites. 2. Public supply and railway and transport power stations. 3. Low temperature carbonisation and patent fuel plants. 4. Including miners' coal. 5. Anthracite, dry steam coal and imported naturally smokeless fuels. 6. Mainly public administration and commerce.

TABLE 5. Stocks of coal¹ at end of period: Great Britain

Thousand tonnes

	Total	Distributed					Undistributed		
		Total distributed stocks	Power stations	Coke ovens	Gas works	Other	Total undistributed stocks	Collieries	Opencast sites and central stocking grounds
1973	27,885	17,035	14,770	1,968	27	270	10,850	7,650	3,200
1974	21,806	15,827	13,629	1,851	3	344	5,979	4,009	1,970
1975	31,157	20,540	17,951	2,333	2	254	10,617	8,908	1,709
1976	33,115	22,457	19,598	2,684	2	173	10,658	9,295	1,363
1977	31,534	21,704	19,128	2,368	2	206	9,830	8,290	1,540
1978	34,527	22,038	20,200	1,658	2	178	12,489	9,888	2,601
1978 Mar	29,256	19,079	17,047	1,859	2	171	10,177	8,628	1,549
Apr	30,246	19,365	17,432	1,757	2	174	10,881	9,178	1,703
May	31,201	20,268	18,193	1,884	1	190	10,933	9,197	1,736
1979 Mar p	28,822	14,591	12,322	2,075	2	192	14,231	11,535	2,696
Apr p	28,076	14,124	11,889	2,046	2	187	13,952	11,306	2,646
May p	27,952	14,648	12,424	2,043	1	180	13,304	10,821	2,483
Absolute change: in latest month	-124	+542	+535	-3	-1	-7	-648	-485	-163
On a year ago	-3,249	-5,620	-5,769	+159	—	-10	+2,371	+1,624	+747

1. Excluding distributed stocks held in merchants' yards, etc., mainly for the domestic market, and stocks held by the industrial sector.

TABLE 6. Colliery manpower and productivity at NCB mines

	Wage earners on colliery books ¹		Recruitment	Wastage	Absence percentage ²			Average output per manshift ³		
	Total	Underground			Total	Voluntary	Involuntary	Overall	Underground ⁴	
									Total	Production
Thousands		Number		Per cent			Tonnes			
1973	245	193	17,402	37,961	18.0	4.1	13.9	2.29	2.95	..
1974	246	194	26,436	25,133	16.3	4.1	12.2	2.18	2.80	..
1975	245	194	21,347	22,451	16.2	4.0	12.2	2.28	2.92	..
1976	241	192	17,061	21,239	17.4	3.7	13.7	2.23	2.84	..
1977	239	189	29,361	31,647	17.6	3.9	13.7	2.18	2.78	..
1978	232	184	20,595	27,653	17.3	4.3	13.0	2.25	2.88	..
Per cent change	-2.9	-2.6	-29.9	-12.6				+3.2	+3.6	..
1978 Jan-May	239 ⁵	190 ⁵	10,275	9,558	18.3	4.6	13.7	2.32	2.95	..
1979 Jan-May p	232 ⁵	185 ⁵	9,463	8,556	17.4	4.9	12.5	2.26	2.87	..
Per cent change	-2.9	-2.6	-7.9	-10.5				-2.6	-2.7	..
1978 Mar*	239	190	2,276	2,151	18.9	4.7	14.2	2.33	2.96	..
Apr	240	190	2,652	1,849	17.5	4.9	12.6	2.36	2.98	..
May	240	190	1,265	1,799	15.6	3.6	12.0	2.27	2.92	..
1979 Mar*	232	185	2,357	2,044	18.2	5.1	13.1	2.31	2.93	..
Apr	233	185	1,790	1,653	16.5	5.1	11.4	2.22	2.81	8.46
May p	232	185	1,588	1,750	14.1	3.8	10.3	2.28	2.91	8.82

1. At end of period. 2. The definition was changed from 1973. 3. Excluding capital working and tip coal. 4. For information on this new series, see commentary in May issue. 5. Average number during the period.

Gas

TABLE 7. Sources of supply and send-out by the public gas supply system

	Natural gas supply			Other fuel used		Gas sent out		
	Total into system	Source ¹		Coal	Oil ³	Total	Town gas	Natural ⁴ gas for direct supply
		Indigenous	Imported ²					
	Million therms			Thousand tonnes		Million therms		
1975	13,692	13,367	325	9	588	13,822	752	13,070
1976	14,420	14,030	390	8	245	14,445	226	14,219
1977	15,373	14,734	639	7	166	15,323	75	15,248
1978 p	15,854	13,997	1,857	6	283	15,853	39	15,814
Per cent change	+3.1	-5.0	(+)	-14.3	+71.1	+3.5	-48.0	+3.7
1978 Jan-May	7,902	7,256	646	3	144	7,923	18	7,905
1979 Jan-May p	8,837	7,397	1,440	4	109	8,876	20	8,856
Per cent change	+11.8	+1.9	(+)	+29.3	-24.3	+12.0	+11.1	+12.0
1978 Mar*	1,871	1,733	138	1	21	1,871	4	1,867
Apr	1,443	1,313	130	1	13	1,443	3	1,440
May	1,063	975	88	—	21	1,065	4	1,061
Total	4,377	4,021	356	2	55	4,379	11	4,368
1979 Mar*	2,280	1,910	370	1	20	2,283	4	2,279
Apr	1,453	1,217	236	1	16	1,455	4	1,451
May p	1,229	1,001	228	—	19	1,228	3	1,225
Total	4,962	4,128	834	2	55	4,966	11	4,955
Per cent change	+13.4	+2.7	(+)	+35.8	+0.7	+13.4	+8.1	+13.4

1. Figures differ from production and imports respectively because of stock changes and small quantities not entering the public supply system.

2. Includes imports from the Norwegian sector of the Frigg gasfield. 3. Mainly naphtha (LDF), liquefied petroleum gases (LPG) and refinery gases.

4. Includes Substitute Natural Gas (SNG).

TABLE 8. Sales of gas by the public supply system

million therms

	Total	Power stations ¹	Iron and steel industry	Other industries	Domestic	Other ²
1973	10,729	285	396	4,150	4,815	1,083
1974	12,668	985	395	4,635	5,384	1,269
1975	13,112	858	371	4,645	5,891	1,347
1976	13,997	662	438	5,182	6,194	1,521
1977	14,579	519	485	5,398	6,590	1,587
1978	15,308	338	446	5,519	7,261	1,744
Per cent change	+5.0	-34.9	-8.0	+2.2	+10.2	+9.9
1976 4th quarter	4,218	133	119	1,452	2,050	464
1977 1st quarter	4,634	118	128	1,414	2,413	561
2nd quarter	3,317	82	125	1,359	1,371	380
3rd quarter	2,372	153	113	1,155	771	180
4th quarter	4,256	166	119	1,470	2,035	466
1978 1st quarter	5,257	165	118	1,523	2,808	643
2nd quarter	3,344	25	113	1,409	1,393	404
3rd quarter	2,416	69	110	1,163	866	208
4th quarter	4,291	79	105	1,424	2,194	489
Per cent change	+0.8	-52.4	-4.5	-3.1	+7.8	+4.9

1. Public supply and transport power stations. 2. Public administration and commerce.

Electricity

TABLE 9. Fuel used and electricity generated by the public supply system

	Fuel used						Electricity generated			Own ⁵ use	Electricity supplied	Total ⁶ electricity available
	Total ¹	Coal ²	Oil ^{2 3}	Natural gas	Nuclear electricity	Hydro electricity	Total ⁴	By steam plant				
								Nuclear	Other			
Million tonnes coal or coal equivalent						TWh						
United Kingdom												
1975	110.72	74.57	21.48	3.42	9.44	1.67	251.26	26.52	219.69	18.02	233.24	237.30
1976	110.51	77.82	17.05	2.55	11.40	1.64	254.92	32.42	217.50	19.16	235.76	239.47
1977	113.98	79.56	17.98	1.76	12.88	1.73	262.04	36.42	220.19	19.56	242.48	246.31
1978 p	115.14	80.87	19.49	1.01	11.89	1.76	266.79	33.34	228.19	18.79	248.00	251.92
Per cent change	+1.0	+1.6	+8.4	-42.6	-7.7	+1.7	+1.8	-8.5	+3.7	-4.0	+2.3	+2.3
1978 Jan-Apr	43.57	29.76	7.71	0.57	4.79	0.72	101.09	13.39	85.63	7.10	93.99	95.43
1979 Jan-Apr p	46.96	33.11	8.30	0.13	4.75	0.62	108.32	13.29	93.13	7.32	101.00	102.43
Per cent change	+7.8	+11.3	+7.7	-77.2	-0.8	-13.9	+7.2	-0.7	+8.8	+3.1	+7.5	+7.3
1978 Feb	11.24	7.74	1.98	0.16	1.21	0.14	26.09	3.39	22.28	1.82	24.27	24.64
Mar*	11.99	8.06	2.06	0.18	1.44	0.24	28.01	4.01	23.35	1.97	26.04	26.46
Apr	9.42	6.43	1.84	—	0.98	0.16	21.77	2.74	18.55	1.54	20.23	20.55
Total	32.65	22.23	5.88	0.34	3.63	0.54	75.87	10.14	64.18	5.33	70.54	71.65
1979 Feb	11.89	8.24	2.29	—	1.24	0.11	27.59	3.46	23.76	1.85	25.74	26.09
Mar*	13.70	9.73	2.36	0.06	1.31	0.23	31.60	3.68	27.26	2.11	29.49	29.91
Apr p	9.51	6.97	1.34	0.06	0.98	0.14	21.70	2.77	18.52	1.52	20.18	20.51
Total	35.10	24.94	5.99	0.12	3.53	0.48	80.89	9.91	69.54	5.48	75.41	76.51
Per cent change	+7.5	+12.2	+1.9	-64.7	-2.8	-11.1	+6.6	-2.3	+8.4	+2.8	+6.9	+6.8
England and Wales												
1975	94.16	65.71	18.24	3.42	8.53	0.09	219.25	23.94	194.33	15.32	203.93	205.44
1976	95.80	69.06	14.06	2.55	10.00	0.08	222.12	28.30	193.11	15.94	206.18	207.57
1977	98.34	70.59	14.93	1.76	10.88	0.11	226.99	30.70	195.09	16.25	210.74	213.33
1978 p	99.50	72.18	15.94	1.01	10.14	0.11	231.41	28.46	202.08	15.81	215.60	218.51
Per cent change	+1.2	+2.3	+6.8	-42.6	-6.8	-2.6	+1.9	-7.3	+3.6	-2.7	+2.3	+2.4
1978 Jan-Apr	37.50	26.25	6.41	0.57	4.20	0.05	87.46	11.74	75.39	5.98	81.48	82.61
1979 Jan-Apr p	40.42	29.80	6.33	0.13	4.05	0.05	93.37	11.38	81.63	6.16	87.21	88.42
Per cent change	+7.8	+13.5	-1.2	-77.2	-3.6	-2.2	+6.8	-3.1	+8.3	+3.0	+7.0	+7.0
1978 Feb	9.68	6.84	1.60	0.16	1.07	0.01	22.53	2.99	19.46	1.52	21.01	21.30
Mar*	10.31	7.13	1.71	0.18	1.26	0.02	24.27	3.53	20.65	1.69	22.58	22.87
Apr	8.12	5.62	1.60	—	0.88	—	18.89	2.46	16.34	1.29	17.60	17.83
Total	28.11	19.59	4.91	0.34	3.21	0.03	65.69	8.98	56.45	4.50	61.19	62.00
1979 Feb	10.26	7.43	1.77	—	1.04	0.01	23.81	2.89	20.84	1.54	22.27	22.49
Mar*	11.77	8.67	1.82	0.06	1.19	0.02	27.22	3.34	23.75	1.80	25.42	25.86
Apr p	8.12	6.25	0.97	0.06	0.81	0.01	18.63	2.29	16.28	1.27	17.36	17.68
Total	30.15	22.35	4.56	0.12	3.04	0.04	69.66	8.52	60.87	4.61	65.05	66.03
Per cent change	+7.3	+14.1	-7.1	-64.7	-5.3	+2.9	+6.0	-5.1	+7.8	+2.4	+6.3	+6.5

1. Including coke. 2. Including quantities used in the production of steam for sale. 3. Including oil used in gas turbine and diesel plant and for lighting up coal fired boilers. 4. Including generation by gas turbine, diesel and hydro-electric plant. 5. Used in works and for pumping at pumped storage stations. 6. Includes net imports and purchases from outside sources mainly UKAEA and British Nuclear Fuels Ltd. The England and Wales figures include net exchanges with Scotland.

TABLE 10. Sales of electricity by the public supply system

GWh

	Total	Iron and steel industry	Other industries	Domestic	Other ¹
1973	225,267	11,646	75,327	91,299	46,995
1974	218,552	11,292	70,967	92,626	43,667
1975	217,924	11,164	70,854	89,214	46,692
1976	220,841	12,607	74,986	85,117	48,131
1977	225,655	12,310 ²	76,561 ²	85,902	50,882
1978	230,210	13,063 ²	77,839 ²	85,802	53,506
Per cent change	+2.0	+6.1	+1.7	-0.1	+5.2
1976 4th quarter	62,957	3,453	20,203	25,296	14,005
1977 1st quarter	67,181	3,273	20,458	28,564	14,886
2nd quarter	52,535	3,054 ²	18,993 ²	18,803	11,685
3rd quarter	46,077	2,911 ²	17,793 ²	14,938	10,435
4th quarter	59,862	3,072 ²	19,317 ²	23,597	13,876
1978 1st quarter	67,732	3,360 ²	20,507 ²	28,266	15,599
2nd quarter	53,374	3,368 ²	19,227 ²	18,627	12,152
3rd quarter	47,163	2,975 ²	18,051 ²	15,166	10,971
4th quarter	61,941	3,360 ²	20,054 ²	23,743	14,784
Per cent change	+3.5	+9.4	+3.8	+0.6	+6.5

1. Mainly commerce, public administration and agriculture. 2. Contains a small degree of estimation.

Petroleum

TABLE 11. Production, arrivals and shipments¹

Thousand tonnes

	Crude Petroleum						Petroleum Products				
	Gross ² Indigenous Production	Supply				Arrivals ^{4 5}	Shipments ^{4 5}	Arrivals ⁴	Shipments ⁴	Net Arrivals	Bunkers ⁶
		Total	Indigenous ²	Net arrivals	Other ³						
1975	1,564	92,273	1,156	+89,942	1,275	91,366	1,524	12,786	13,924	-1,138	3,444
1976	12,036	98,384	11,511	+86,181	692	90,466	4,285	10,709	15,988	-5,279	3,569
1977	37,879	92,260	37,540	+54,038	682	70,697	16,659	13,049	14,294	-1,245	2,829
1978 p	53,378	96,758	52,557	+43,285	916	68,144	24,859	11,511	13,536	-2,025	2,872
Per cent change	+40.9	+4.9	+40.0	-19.9	+34.2	-3.6	+49.2	-11.8	-5.3		-7.5
1978 Jan-Apr	15,045	32,280	15,239	+16,739	302	23,496	6,757	4,386	3,642	+744	785
1979 Jan-Apr p	23,222	31,842	23,562	+8,101	179	19,863	11,762	4,494	4,075	+419	839
Per cent change	+54.4	-1.4	+54.6	(-)	-40.1	-15.5	+74.1	+2.5	+11.9		+6.8
1978 Feb	3,610	8,278	3,703	+4,481	94	6,121	1,640	1,113	696	+417	191
Mar	3,683	7,342	3,919	+3,361	62	5,347	1,986	1,073	1,056	+17	185
Apr	3,985	8,416	3,940	+4,392	84	5,976	1,584	1,063	1,039	+24	204
Total	11,278	24,036	11,562	+12,234	240	17,444	5,210	3,249	2,791	+458	580
1979 Feb	5,670	7,868	5,956	+1,885	27	5,109	3,224	894	1,093	-199	240
Mar	5,566	7,073	5,446	+1,580	47	4,224	2,644	1,487	937	+550	207
Apr p	5,881	7,756	5,933	+1,767	56	4,596	2,829	944	851	+93	185
Total	17,117	22,697	17,335	+5,232	130	13,929	8,697	3,325	2,881	+444	632
Per cent change	+51.8	-5.6	+49.9	(-)	-45.8	-20.2	+66.9	+2.4	+3.2		+8.9

1. Calendar months. 2. Including natural gas liquids (condensates). 3. Mainly recycled products. 4. Foreign Trade as recorded by the Petroleum Industry and may differ from figures published in Overseas Trade Statistics. 5. Including process (partly refined) oils. 6. International bunkers.

TABLE 12. Refinery throughput and output of petroleum products¹

Thousand tonnes

	Through- put of crude and process oil	Refinery use		Total output of petrol- eum pro- ducts ²	Gases		Naphtha (LDF)	Motor spirit	Kerosene		Gas/ diesel oil	Fuel oil	Lubri- cating oil	Bitumen
		Fuel	Losses		Butane and propane	Other petro- eum			Aviation turbine fuel	Burning oil ³				
1975	93,579	6,031	901	86,647	1,447	151	3,968	13,940	3,959	2,299	23,324	32,711	1,141	2,090
1976	97,784	6,342	1,158	90,284	1,575	158	4,583	15,232	4,163	2,458	24,198	32,695	1,310	1,897
1977	93,615	6,238	1,039	86,338	1,539	142	4,488	14,805	4,004	2,462	23,476	30,481	1,380	1,882
1978 p	96,390	6,423	811	89,156	1,613	147	4,626	15,958	4,783	2,614	24,024	30,518	1,203	1,866
Per cent change	+3.0	+3.0	-21.9	+3.3	+4.8	+3.6	+3.1	+7.8	+19.5	+6.2	+2.3	+0.1	-12.8	+0.2
1978 Jan-Apr	32,432	2,166	355	29,911	550	48	1,645	4,939	1,421	1,114	8,207	10,591	349	541
1979 Jan-Apr p	32,439	2,171	236	30,032	598	62	1,791	5,130	1,581	1,146	8,369	9,829	363	491
Per cent change	-	+0.2	-33.5	+0.4	+8.9	+27.5	+8.8	+3.9	+11.3	+2.9	+2.0	-7.2	+3.8	-9.4
1978 Feb	7,527	515	137	6,875	127	12	370	1,149	341	266	1,897	2,432	67	102
Mar	8,558	567	57	7,934	145	12	462	1,268	369	293	2,232	2,745	106	183
Apr	7,955	510	105	7,340	131	14	393	1,236	356	219	1,998	2,598	91	144
Total	24,040	1,592	299	22,149	403	38	1,225	3,653	1,066	778	6,127	7,775	264	429
1979 Feb	8,290	542	85	7,663	158	13	413	1,309	365	353	2,059	2,682	77	88
Mar	8,049	530	(18)	7,537	156	18	523	1,187	443	273	2,193	2,304	97	174
Apr p	7,464	500	65	6,899	136	17	407	1,257	422	214	1,916	2,080	99	161
Total	23,803	1,572	132	22,099	450	48	1,343	3,753	1,230	840	6,168	7,066	273	423
Per cent change	-1.0	-1.3	(-)	-0.2	+11.6	+28.4	+9.7	+2.7	+15.2	+8.0	+0.7	-9.1	+3.4	-1.5

1. Calendar months. 2. Including output of products not shown separately, namely, aviation spirit, wide-cut gasoline, industrial and white spirits, paraffin wax and miscellaneous products. 3. Including vaporising oil.

TABLE 13 Deliveries of petroleum products for inland consumption¹

Thousand tonnes

	Total ^{2 3}	Butane ⁴ and propane	Naphtha (LDF) ⁵	Motor spirit	Kerosene				Gas/diesel oil		Fuel oil	Lubri- cating oils	Bitumen
					Aviation turbine fuel	Burning oil							
						Premier	Standard						
							Domestic	Other ⁶	Derv fuel	Other			
1975	82,824	1,275	5,116	16,125	3,834	538	1,707	400	5,414	13,050	30,470	992	2,089
1976	81,579	1,330	5,404	16,879	3,989	576	1,686	372	5,594	12,984	27,825	1,011	1,867
1977	82,759	1,320	5,179	17,336	4,165	559	1,677	391	5,711	13,914	27,772	1,029	1,847
1978 p	84,141	1,318	4,916	18,348	4,506	536	1,696	428	5,875	13,600	28,233	1,027	1,887
Per cent change	+1.7	-0.2	-5.1	+5.8	+8.2	-4.1	+1.1	+9.4	+2.9	-2.3	+1.7	-0.7	+2.2
1978 Jan-Apr	30,217	501	1,833	5,577	1,238	301	736	178	1,872	5,768	10,850	326	524
1979 Jan-Apr p	31,246	568	1,552	5,819	1,334	351	813	189	1,870	6,062	11,278	336	468
Per cent change	+3.4	+13.3	-15.3	+4.3	+7.7	+16.7	+10.6	+6.0	-0.1	+5.1	+4.0	+3.2	-10.7
1978 Feb	7,288	124	465	1,191	243	99	196	49	437	1,493	2,698	77	105
Mar	7,821	132	489	1,531	356	60	184	46	483	1,430	2,715	84	170
Apr	7,364	110	436	1,487	333	51	156	39	486	1,305	2,596	80	148
Total	22,473	366	1,390	4,209	932	210	536	134	1,406	4,228	8,009	241	423
1979 Feb	7,930	149	346	1,332	312	109	227	57	453	1,659	2,963	86	92
Mar	8,276	146	406	1,582	357	71	194	47	540	1,510	2,987	101	165
Apr p	7,043	127	415	1,558	362	46	159	32	500	1,233	2,214	88	156
Total	23,249	422	1,167	4,472	1,031	226	580	136	1,493	4,402	8,164	275	413
Per cent change	+3.5	+15.2	-16.0	+6.3	+10.7	+8.1	+8.0	+1.5	+6.2	+4.1	+2.0	+14.3	-2.2

1. Calendar months. 2. Including other petroleum gases, aviation spirit, wide-cut gasoline, industrial and white spirits, paraffin wax and miscellaneous products. 3. Excluding refinery fuel. 4. Including very small amounts for petro-chemicals. 5. Now mainly for petro-chemical feed stock. 6. Including vaporising oil.

TABLE 14. Inland deliveries of petroleum products used for energy^{1 2}

Thousand tonnes

	Total	Power stations ³	Gas works	Iron and steel industry	Other industries	Transport ⁴	Domestic	Other ⁵
1973	88,196	16,993	2,355	4 995	22,045	28,971	3,812	9,025
1974	81,547	17,240	1,339	4,019	19,695	27,930	3,378	7,946
1975	73,385	13,345	693	3,309	17,251	27,583	3,270	7,935
1976	71,473	10,441	366	3,128	17,487	28,592	3,269	8,183
1977	73 043	10,873	292	2,938	17,701	29,359	3,263	8,617
1978 p	74,702	11,638	342	2,836	17,544	30,877	3,225	8,240
Per cent change	+2.3	+7.0	+17.1	-3.5	-0.9	+5.2	-1.2	-4.4
1978 Jan	6,970	1,095	34	264	1,854	2,319	412	992
Feb	6,550	1,116	35	265	1,730	2,048	413	943
Mar	6,944	1,038	29	292	1,742	2,551	357	935
Total	20,464	3,249	98	821	5,326	6,918	1,182	2,870
1979 Jan	7,379	1,344	43	272	1,963	2,186	485	1,086
Feb	7,281	1,145	39	277	1,995	2,294	452	1,079
Mar p	7,446	1,222	34	291	1,856	2,666	368	1,009
Total	22,106	3,711	116	840	5,814	7,146	1,305	3,174
Per cent change	+8.0	+14.2	+19.2	+2.5	+9.2	+3.3	+10.3	+10.6

1. Calendar months. 2. Excludes non-energy products and non-energy use of naphtha (LDF). 3. Public supply, railway and transport power stations.
4. Including fishing, coastal and inland shipping. 5. Mainly public administration, commerce and agriculture.

TABLE 15. Stocks of petroleum at end of month

	Held by oil companies ¹		Power stations ²
	Million tonnes	Estimated days supply ³	Million tonnes
1978 Mar	18.4	78	1.03
Apr	18.5	85	0.99
May	18.5	89	1.01
1969 Mar	16.4	69	0.76
Apr p	16.9	80	0.73
May p	17.6	87	0.65

1. Stocks of petroleum products plus the product equivalent of crude and process oils held at refineries, and products in the wholesale distribution system. 2. Fuel oil held at main oil burning stations in Great Britain. 3. Latest three months calculated on forecast deliveries for the ensuing months. Figures for earlier period calculated on actual deliveries.

APPROXIMATE CONVERSION FACTORS

(last digit rounded to nought or five)

To convert from one fuel to another, multiply by the factor shown

From \ To	Million tonnes coal equiv.	Million tonnes oil equiv.	Million therms	TWh electrical energy	TWh electricity generated
Million tonnes coal equivalent	1	1.7	0.004	0.135 ¹	0.500 ²
Million tonnes oil equivalent	0.60	1	0.00235	0.0800 ¹	0.280 ²
Million therms	250	425	1	34.0	115
TWh electrical energy	7.35	12.5	0.0295	1	..
TWh electricity generated	2.00 ³	3.60 ³	0.00880 ³	..	1

1. The amount of fuel (average grade) equivalent to a TWh of energy.
2. The amount of primary fuel (power station grade) to generate 1 TWh.
3. The amount of electricity generated by one million units of fuel shown.
The *Digest of UK Energy Statistics 1978* gives more detailed factors.

SUPPLEMENTARY DATA

Prices of fuels used by Industry in Great Britain¹

	Delivered to large industrial consumers ²					Realised in new and renewed contracts ³		
	Coal	Heavy Fuel Oil	Gas Oil	Gas	Electricity	Heavy Fuel Oil ³	Gas Oil ³	Gas ⁴
	£ per tonne			Pence per therm	Pence per KWh	£ per tonne		Pence per therm
1975 4th quarter	15.3	38.1	53.0	4.84	1.354	45.6	69.2	..
1976 1st quarter	17.1	41.5	63.0	5.73	1.453	44.6	69.7	..
2nd quarter	17.5	40.8	61.0	5.72	1.447	43.5	68.4	11.3
3rd quarter	17.7	42.4	60.7	6.74	1.461	44.5	69.5	11.3
4th quarter	19.1	47.1	67.1	7.58	1.592	54.3	80.8	11.6
1977 1st quarter	20.0	53.3	76.1	8.58	1.714	55.2	81.9	12.7
2nd quarter	21.2	56.1	79.8	9.12	1.656	59.1	87.2	13.0
3rd quarter	22.1	54.8	79.6	9.30	1.676	57.0	84.8	14.4
4th quarter	22.3	54.7	80.1	10.13	1.826	55.6	84.2	15.0
1978 1st quarter	22.6	52.8	80.6	11.13	1.952	55.0	83.3	15.3
2nd quarter	23.7	51.8	79.1	11.74	1.812	54.4	81.5	15.2
3rd quarter	23.2	50.7	77.7	11.96	1.825	53.4	81.1	15.3
4th quarter p	23.5	49.9	77.3	12.08	2.000	52.4	80.0	15.3
1979 1st quarter p	24.5	51.5	83.4	12.75	2.119	54.9	89.9	15.4

1. Prices for oil products include hydrocarbon oil duty. 2. Average prices paid by respondents to a Department of Energy survey covering some 800 establishments. The data relates to purchases received and can include business under contracts made in earlier times. Prices vary widely around the average values shown. 3. Derived from prices reported by the ten main oil marketing companies and relate to average net prices realised on medium sized new contracts of contracts which are renewed at a changed price. The coverage may extend beyond manufacturing industry and may include for example larger commercial users. 4. British Gas Corporation estimates of the average price of new and renewed contracts (including commercial) in the quarter, both firm and interruptible supplies.