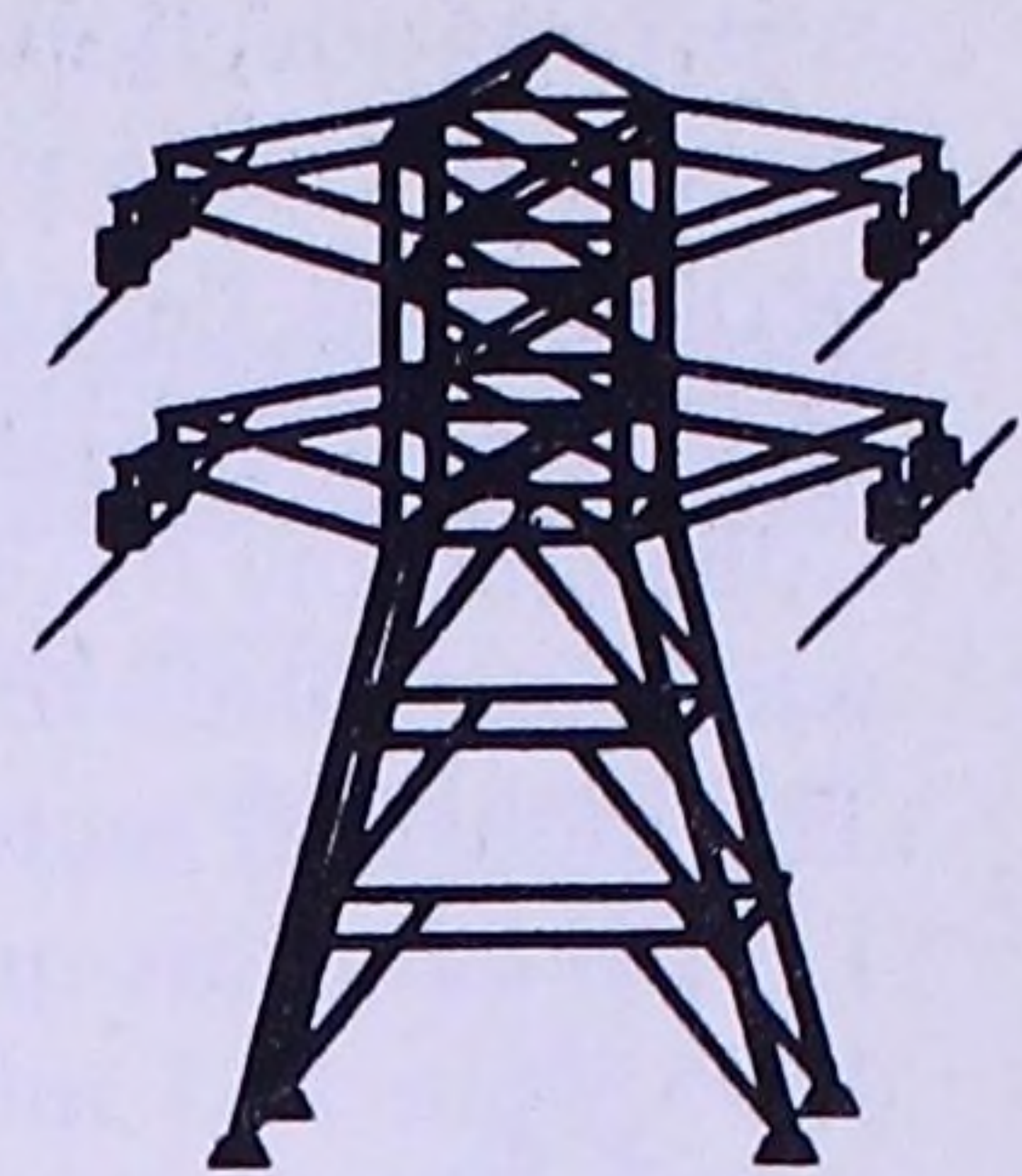


ENERGY Trends



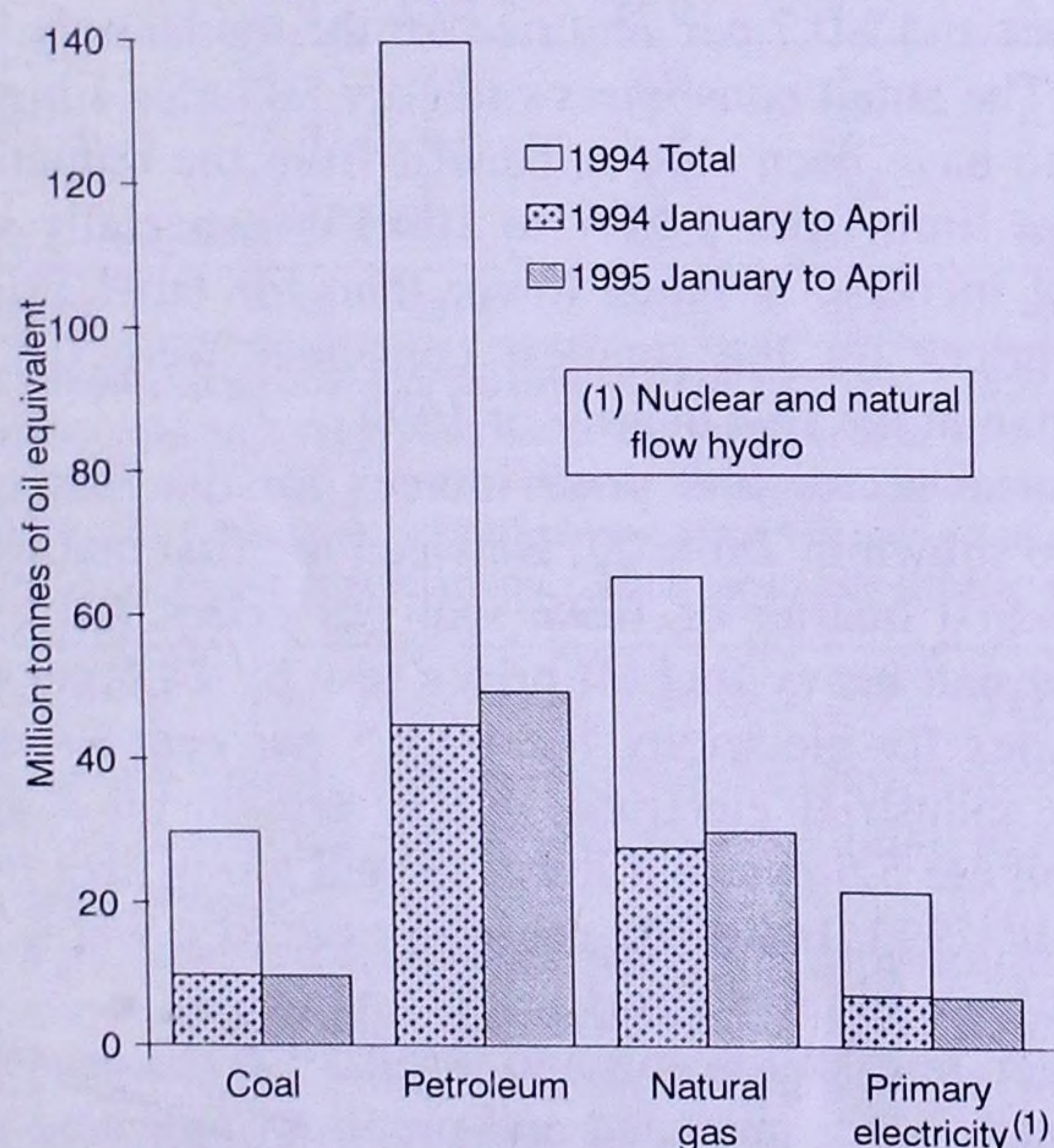
A Statistical Bulletin from the
Department of Trade & Industry

JUNE 1995

MAIN POINTS

- ★ Energy production was 8 per cent higher in the three months to April 1995 compared with a year ago, with oil production 11 per cent higher. Coal production rose by 3 per cent. The first rise, over a three month period, for three years.
- ★ Total primary energy consumption in the three months to April 1995, after temperature correction and seasonal adjustment, remained the same as in the corresponding months a year earlier.
- ★ In the three months to April production at nuclear stations was 5.0 per cent higher than during the same period in 1994. Production of nuclear electricity in April was boosted by the first significant supplies from Sizewell B.
- ★ Overall, industrial energy prices in the first quarter of 1995 were, in real terms, 1 per cent higher than in the first quarter of 1994. Industrial gas prices fell by 9 per cent and industrial electricity prices were 1 per cent lower, but heavy fuel oil prices were 29 per cent higher.
- ★ The UK remained a net exporter of fuels in the first quarter of 1995, with a net surplus of more than £1 billion. The back page of this issue carries an article on foreign trade in fuels in 1994.

Chart 1 : Production of indigenous
primary fuels in 1994 and 1995



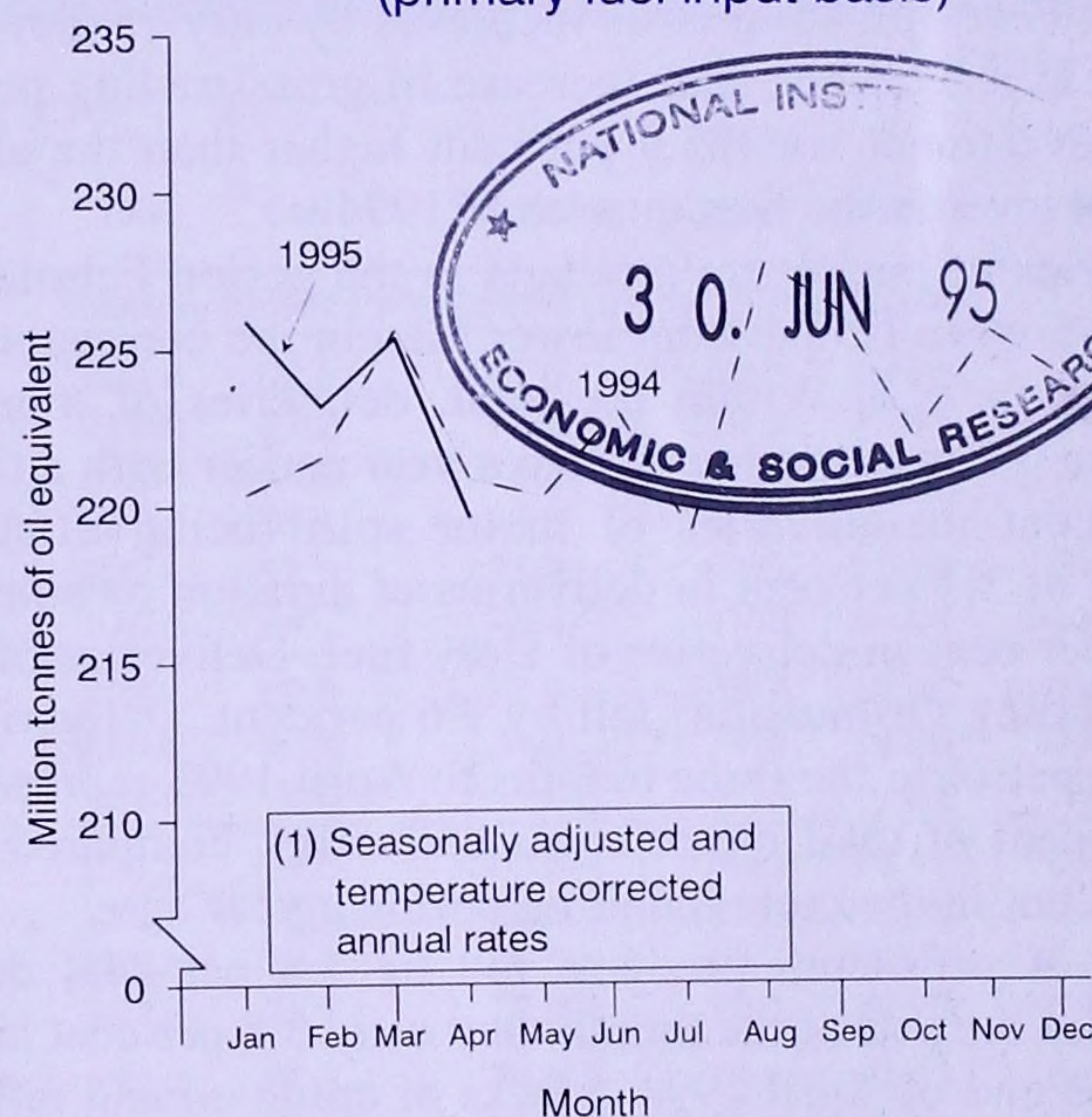
TOTAL ENERGY PRODUCTION (Table 1)

Indigenous production of primary fuels during the three months February to April 1995 at 71.9 million tonnes of oil equivalent, was 7.7 per cent more than in the corresponding

period a year ago. Production of coal and nuclear electricity rose by 2.7 per cent and 2.0 per cent respectively, whilst production of petroleum (including NGLs) and natural gas increased by 10.7 per cent and 6.1 per cent respectively, compared with the same period a year earlier. Coal production showed the first rise over a three month period for three years.

TOTAL ENERGY CONSUMPTION (Table 2)

Chart 2 : Total inland consumption
(primary fuel input basis) ⁽¹⁾



Total inland energy consumption, on a primary fuel input basis, in the three month period February to April 1995 was 60.7 million tonnes of oil equivalent, 1.4 per cent less than in the corresponding months a year ago. Consumption of petroleum and coal fell by 4.9 per cent and 3.3 per cent, whilst natural gas consumption rose by 2.2 per cent.

The average temperature during the period was nearly one centigrade degree higher than a year ago, so that total energy consumption, on a seasonally adjusted and temperature corrected basis, in the three months period February to April 1995 remained the same as in the corresponding period a year earlier. On this basis, consumption of natural gas rose by 5.3 per cent, whilst coal and petroleum consumption fell by 2.3 per cent and 4.0 per cent respectively.

COAL & OTHER SOLID FUELS (Tables 4 to 7)

Provisional figures for the three months February to April 1995 show that production was 13.3 million tonnes, 2.7 per cent higher than in the same period a year ago. This is the first

Continued on next page



rise in production over a three month period for more than three years. Use of home produced and imported coal in the period from February to April was 22.2 million tonnes, 3.8 per cent lower than in the same months a year earlier. Consumption by electricity generators fell by 2.6 per cent whilst disposals to the domestic sector fell by 24.5 per cent. The industrial sector also decreased its consumption, down by 1.8 per cent this quarter. Total coal stocks at the end of April 1995 were 19.1 million tonnes, 1.1 million tonnes lower than at the end of the previous month and 18.2 million tonnes lower than at the end of April 1994.

GAS (Tables 8 and 9)

Provisional data for the three month period to April 1995 show that gross production was 3.8 per cent higher than in the corresponding period a year earlier. Exports to Europe from the Markham field were 2,493 gigawatt hours in the period February to April 1995, reducing the UK's net imports of natural gas by 55.8 per cent. Imported supplies were 63.3 per cent lower than in the same period in 1994, accounting for 2.0 per cent of the total gas available compared to 5.3 per cent a year earlier. Gas supplied through the inland transmission system was 1.1 per cent lower than in the corresponding period a year ago.

PETROLEUM (Tables 10 to 16)

In the first quarter of 1995 income was 25.5 per cent higher than in the same period of 1994 due to increased production and oil prices. Operating costs increased by only 1.4 per cent, resulting in a 32.8 per cent increase in gross trading profits. Capital investment was 23.9 per cent higher than the abnormally low level in the first quarter of 1994.

Deliveries of petroleum products in the period February to April 1995 were 1.3 per cent lower than in the corresponding period a year ago. Within the total, deliveries of transport fuels were 0.2 per cent lower than a year earlier with a fall of 4.9 per cent in deliveries of motor spirit being offset by increases of 3.1 per cent in deliveries of aviation turbine fuel and 6.7 per cent in deliveries of Derv fuel. Deliveries of fuel oils (including Orimulsion) fell by 9.6 per cent. Deliveries of unleaded petrol in the three months to April 1995 represented 61.3 per cent of total motor spirit deliveries, compared with 56.1 per cent in the corresponding period a year ago.

Stocks of petroleum products fell by 1.8 per cent during April but at the end of the month they were 3.8 per cent higher than at the end of April 1994. Stocks of crude oil and refinery process oils increased by 5.6 per cent during April, and at the end of the month were 4.6 per cent lower than a year earlier.

ELECTRICITY (Tables 17 to 22)

Electricity supplied by the major power producers in the latest three months (February to April 1995) was 1.3 per cent more than a year earlier. The supply from nuclear stations rose by 4.6 per cent assisted by the first significant contribution from Sizewell B. CCGT stations supplied 11.5 per cent more electricity than in the February to April period of 1994. The supply from coal-fired conventional steam stations during the period fell by 2.7 per cent, while the supply from oil-fired steam stations showed a much larger 30.3 per cent drop in the face of competition from other fuels and high fuel prices. When electricity available from other UK sources (which was 18.4 per cent less than a year ago) and imports (up 1.9 per cent) are included, total electricity available through the public distribution system was 0.9 per cent higher than a year earlier.

Fuel used by the major power producers in the three months to April 1995 rose by 0.2 per cent compared to the three months

to April 1994. Coal use was down 3.0 per cent on a year earlier while the amount of oil used was 17.6 per cent lower. Gas use was 13.9 per cent higher than that of a year earlier while nuclear and hydro sources contributed 4.6 per cent more.

In the first quarter of 1995 preliminary figures of sales of electricity through the public distribution system were 5.2 per cent higher than a year earlier. Sales to domestic, commercial and industrial customers rose by 6.6 per cent, 4.2 per cent and 3.4 per cent respectively. When electricity available from other generators is included, total consumption of electricity during the first quarter of 1995 was also 5.2 per cent higher than a year earlier. It should, however, be noted that data on sales are subject to revision because of metering problems arising from increased competition in the market above 100 kW.

FOREIGN TRADE (Table 24)

Provisional figures for the first quarter of 1995 show that, in value terms, total imports of fuels were 4 per cent higher than in the same quarter of 1994, whilst exports were 22 per cent higher. Overall, the United Kingdom was a net exporter of fuels, with a surplus on a Balance of Payments basis of £1,027 million. This compares with a surplus of £641 million in the first quarter of 1994. The increase is due to the improvement in the trade balance of crude oil and petroleum products.

In volume terms imports of fuel in the first quarter of 1994 were 12 per cent lower than a year ago, but exports were 6 per cent higher. Overall, the United Kingdom had a trade surplus in fuels equal to 11.9 million tonnes of oil equivalent.

The back page of this issue carries an article on foreign trade in fuels in 1994.

PRICES (Tables 25 to 29)

This month's issue contains first quarter 1995 data for the prices of fuels purchased by manufacturing industry in Great Britain. Of the main oil products, the price of heavy fuel oil was on average 30.6 per cent higher than in the same quarter a year earlier following the price trend of crude oil. The price of gas oil was 0.6 per cent higher. Coal prices were on average 6.0 per cent lower than a year earlier.

Electricity prices for large consumers in manufacturing industry fell by 0.8 per cent from their first quarter 1994 level but this rise combines a 1.4 per cent fall for the extra large consumer and a 0.7 per cent rise for the moderately large consumer. The small consumers category includes a high proportion who have been able to benefit from the reduction in the franchise limit from 1 MW to 100 kW especially where the seasonal increase is much lower than for tariff prices. As a result, prices for the smallest consumer were 0.8 per cent lower than in the first quarter of 1994.

Industrial sector fuel price indices for the first quarter of 1995 are shown in Table 27. Between the first quarter of 1994 and the first quarter of 1995, real gas prices fell by 8.8 per cent, but real heavy fuel oil prices rose by 28.6 per cent. The price index for electricity fell by 0.8 per cent in real terms. Overall, industrial electricity prices remain on a downward trend and are 5.5 per cent lower in real terms than in the first quarter of 1993. Industrial energy prices as a whole were 1.0 per cent higher in real terms.

Between mid-March and mid-April 1995 the prices of Derv fuel, 4 star, super unleaded and premium unleaded petrol all rose by about 1 penny per litre (Table 28). The crude oil price index (which is calculated in sterling terms) showed that the average cost of crude oil acquired by refineries in April rose by a provisional 5.6 per cent from March's level: it is now over 30 per cent higher than the low point of March 1994.

TOTAL ENERGY

TABLE 1. Indigenous production of primary fuels¹

Million tonnes of oil equivalent

	Total	Coal ²	Petroleum ^{3,4}	Natural gas ⁵	Primary electricity	
					Nuclear	Natural flow hydro ⁶
1990	219.3	56.6	100.3	45.6	16.26	0.45
1991	226.6	58.0	100.1	50.7	17.43	0.40
1992	225.8	51.8	103.4	51.6	18.45	0.48
1993	234.7	42.1	110.1	60.7	21.49	0.39
1994	256.4	29.8	139.5	65.4	21.18	0.44
Per cent change	+9.2	-29.2	+26.7	+7.7	-1.4	+12.8
1994 Jan-Apr	89.2	9.8	44.6	27.6	7.00	0.19
1995 Jan-Apr	95.7	9.7	49.2	29.8	6.82	0.20
Per cent change	+7.4	-1.4	+10.4	+8.2	-2.6	+3.7
1994 Feb	22.1	2.7	10.3	7.5	1.57	0.04
Mar	24.3	3.1	11.5	7.5	2.04	0.06
Apr	20.5	2.1	11.3	5.4	1.58	0.05
Total	66.8	7.9	33.2	20.4	5.20	0.15
1995 Feb	23.3	2.5	11.6	7.4	1.60	0.05
Mar	26.7	3.3	12.7	8.7	1.91	0.05
Apr	22.0	2.3	12.4	5.5	1.78	0.04
Total	71.9	8.1	36.7	21.6	5.30	0.14
Per cent change	+7.7	+2.7	+10.7	+6.1	+2.0	-2.9

1. Annual data include renewable sources (wood, waste, land fill gas, sewage gas, photovoltaics, solar and geothermal etc). 2. Includes an estimate for slurry, etc recovered and disposed of otherwise than by the British Coal Corporation (BCC). 3. Calendar months. 4. Crude oil, offshore and land, plus condensates and petroleum gases derived at onshore treatment plants. 5. Including colliery methane. Excluding gas flared or re-injected gas. 6. Including generation at wind stations.

TABLE 2. Inland energy consumption: primary fuel input basis¹

Million tonnes of oil equivalent

	Primary electricity							Primary electricity						
	Total	Coal ^{2,3}	Petroleum ⁴	Natural	Natural flow		Net	Total	Coal	Petroleum	natural	Natural flow		Net
				gas ⁵	Nuclear	hydro ⁶	imports				gas	Nuclear	hydro	imports
	Unadjusted ⁷							Seasonally adjusted and temperature corrected ⁸ (annualised rates)						
1990	213.8	67.7	78.0	50.4	16.26	0.45	1.03	220.8	69.5	77.8	55.8	16.26	0.45	1.03
1991	218.5	67.1	78.1	54.0	17.43	0.40	1.41	217.8	67.2	75.1	56.3	17.43	0.40	1.41
1992	216.4	63.4	77.8	54.8	18.45	0.48	1.44	218.3	63.5	78.3	56.2	18.45	0.48	1.44
1993	220.4	55.1	79.7	62.3	21.49	0.39	1.44	221.4	55.1	79.8	63.2	21.49	0.39	1.44
1994	217.4	51.8	76.9	65.7	21.18	0.44	1.45	222.4	52.5	77.9	68.9	21.18	0.44	1.45
Per cent change	-1.4	-6.0	-3.5	+5.5	-1.4	+12.8	+0.7	+0.5	-4.7	-2.4	+9.0	-1.4	+12.8	+0.7
1994 Jan-Apr	81.4	18.9	25.8	29.0	7.00	0.19	0.48	222.1	52.8	77.9	69.7	19.92	0.43	1.45
1995 Jan-Apr	81.2	18.6	24.6	30.5	6.82	0.20	0.49	223.6	52.8	74.8	74.5	19.59	0.44	1.47
Per cent change	-0.2	-1.5	-4.7	+5.0	-2.6	+3.7	+1.0	+0.6	0.0	-4.0	+7.0	-1.7	+3.4	+1.0
1994 Feb	21.0	4.9	6.4	7.9	1.57	0.04	0.11	221.6	54.1	77.8	69.5	18.47	0.40	1.35
Mar*	23.3	5.5	7.7	7.9	2.04	0.06	0.14	225.7	52.9	79.5	71.0	20.02	0.49	1.71
Apr	17.3	4.0	5.9	5.7	1.58	0.05	0.12	220.9	52.2	76.5	69.7	20.70	0.44	1.38
Total	61.5	14.3	20.0	21.6	5.20	0.15	0.37	222.7	53.1	77.9	70.1	19.73	0.44	1.48
1995 Feb	19.7	4.5	6.0	7.5	1.60	0.05	0.11	223.2	51.5	76.9	73.8	19.03	0.52	1.37
Mar	24.3	5.6	7.6	9.0	1.91	0.05	0.15	225.4	53.5	75.6	75.4	18.78	0.39	1.76
Apr	16.6	3.7	5.4	5.6	1.78	0.04	0.11	219.7	50.6	72.0	72.2	23.23	0.37	1.37
Total	60.7	13.8	19.0	22.0	5.30	0.14	0.37	222.8	51.9	74.8	73.8	20.34	0.43	1.50
Per cent change	-1.4	-3.3	-4.9	+2.2	+2.0	-2.9	+1.4	+0.0	-2.3	-4.0	+5.3	+3.1	-3.6	+1.4

1. Annual data include renewable sources (see footnote 1 to Table 1 above). 2. Consumption by fuel producers plus disposals (including imports) to final users, plus (for annual unadjusted figures only) net foreign trade and stock change in other solid fuels. 3. See Technical Note on Statistical Calendar in June 1990 issue. 4. Inland deliveries for energy use plus refinery fuel and losses minus the differences between deliveries and actual consumption at power stations and gas works. 5. Including gas used during production and small amounts of colliery methane, but excluding gas flared or re-injected. Annual data exclude gas used for non-energy purposes. 6. Excludes generation from pumped storage stations. Including generation at wind stations. 7. Not seasonally adjusted or temperature corrected. 8. Coal, petroleum and natural gas are temperature corrected.

NOTES TO TABLES

Figures for the latest periods and the corresponding averages or totals are provisional and are liable to subsequent revision. The figures have not been adjusted for temperature or seasonal factors except where noted in Tables 2 and 27. Due to rounding the sum of the constituent items may not equal the totals. Percentage changes relate to the corresponding period a year ago. They are calculated from unrounded figures but are shown only as (+) or (-) when the percentage change is very large. These comparisons can be affected by calendar differences. Monthly figures relate to four week periods except where otherwise indicated. Figures in the Gas and Petroleum sections relate to calendar months.

All figures relate to the United Kingdom unless otherwise indicated.

Definitions and abbreviations are shown below Table 23. Approximate conversion factors are shown after Table 29.

Symbols used in the tables

- ... not available
- Nil or less than half the final digit shown
- * five-week period
- p provisional
- r revised; where a column or row shows 'r' at the beginning, most, but not necessarily all, of the data have been revised.
- e estimated; totals of which the figures form a constituent part are therefore partly estimated.

TABLE 3. Supply and use of fuels

Thousand tonnes of oil equivalent

			Per cent change	1993				1994p				Per cent change
	1993	1994 p		1st quarter	2nd quarter	3rd quarter	4th quarter	1st quarter	2nd quarter	3rd quarter	4th quarter	
PRIMARY FUELS AND EQUIVALENTS												
Production of primary fuels ¹												
Coal	42,056	29,821	-29.1	12,392	9,888	9,693	10,082	7,723 r	7,279 r	6,986	7,333	-27.3
Petroleum ²	110,105	139,431	+26.6	25,584	24,003	28,059	32,458	33,268 r	33,988	34,543	37,631	+15.9
Natural gas ³	60,682	65,399	+7.8	19,324	11,287	9,440	20,628	22,176 r	13,282 r	10,336 r	19,105	-7.4
Primary electricity ⁴	21,885	21,629	-1.2	5,984	5,133	4,996	5,772	5,552	5,429	5,189	5,459	-5.4
Total ⁵	234,736	256,280	+9.2	63,284	50,311	52,188	68,940	68,717 r	59,978 r	57,054 r	69,528	+0.9
Arrivals, Petroleum ⁶	77,809	69,506	-10.7	18,550	19,511	19,383	20,365	17,872	17,154 r	17,867	16,613	-18.4
Other	18,691	16,107	-13.8	4,968	4,328	4,644	4,751	5,267	3,965	3,466 r	3,679	-22.6
Shipments	96,485	116,914	+21.2	20,645	21,255	26,049	28,535	28,529	28,127 r	29,904	30,354	+6.4
Marine Bunkers	2,612	2,448	+6.3	546	715	722	629	602	640	637	569	-9.5
Stock changes ⁷												
Solid fuels	+1,155	+10,991		+291	-127	-1,285	+2,276	+4,078	+2,758	+1,063	+3,092	
Crude Petroleum	-342	+105		-675	+90	+713	-470	+191	+267	-660	+307	
Petroleum products	-325	-78		-223	+18	-108	-12	+637	-506	+242	-451	
Natural gas	+130	+264		+284	-244	-379	+469	+218	+114	+5	-73	
Non-energy use ⁸	13,723	14,568	+6.2	3,531	3,110	3,587	3,495	3,494 r	3,665 r	3,418 r	3,991	+14.2
Statistical difference ⁹	+1,496	-2,340		+538 r	-135 r	+1,456 r	-362 r	-860 r	-1,420 r	+297 r	-357	
Total primary energy input ¹⁰	220,527	216,905	-1.6	62,298 r	48,674 r	46,256 r	63,300 r	63,495 r	49,608 r	45,375 r	57,424	-9.3
Conversion losses etc. ¹¹	68,222	64,272	-5.8	18,559 r	15,245 r	14,973 r	19,440 r	18,678 r	14,997 r	14,264 r	16,330	-16.0
Final energy consumption ¹²	152,305	151,630	-0.4	43,739 r	33,429 r	31,283	43,856 r	44,817 r	34,611 r	31,111 r	41,094	-6.3
FINAL CONSUMPTION BY USER ¹²												
Iron and steel industry												
Coal	2	2	—	—	—	—	—	—	—	—	—	—
Other solid fuel ¹³	3,817 r	3,967	+3.9	1,043	1,001	849	924	985 r	1,035	942	1,005	+11.0
Coke oven gas	475	508	+6.9	121	123	113	118	126	128	126	128	+8.5
Gas ¹⁴	1,215	1,424	+17.2	350	282	262	322	373	335	373	343	+6.5
Electricity	754	633	-16.0	197	192	177	189	164	161	149	159	-15.9
Petroleum	895	849	-5.1	238	226	210	221	207 r	249	186	207	-6.3
Total	7,158	7,382	+3.0	1,949	1,824	1,611	1,774	1,855 r	1,909	1,776	1,842	+3.8
Other industries												
Coal	3,556	3,414	-4.0	820 r	842 r	868	1,029 r	985	814	814 r	801	-22.2
Other solid fuel ¹³	371	239	-35.6	87	79	71	134	63	48	35 r	93	-30.6
Coke oven gas	23	23	—	9	9	3	3	8	5	5	5	+66.7
Gas ¹⁴	9,541	10,670	+11.8	2,813	2,071	1,890	2,768	3,088 r	2,517 r	2,010 r	3,055	+10.4
Electricity	7,519	7,735	+2.9	1,899	1,819	1,831	1,970	1,995 r	1,914	1,791	2,035	+3.3
Petroleum	8,020	7,409	-7.6	2,208	1,793	1,843	2,175	2,310 r	1,564 r	1,605 r	1,930	-11.3
Total	29,030	29,490	+1.6	7,836 r	6,613 r	6,505	8,079 r	8,449 r	6,862 r	6,260 r	7,919	-2.0
Transport sector												
Electricity ¹⁵	537	572	+6.5	142	132	132	132	151	141	139	141	+6.8
Petroleum	49,770	49,841	+0.1	11,807	12,455	12,919	12,589	11,676	12,477	13,028	12,660	+0.6
Total	50,307	50,413	+0.2	11,949	12,587	13,051	12,720	11,827	12,618	13,167	12,801	+0.6
Domestic sector												
Coal	3,415	3,078	-9.9	934 r	750 r	843	889 r	985	743	761 r	589	-33.7
Other solid fuel ¹³	1,078	694	-35.6	263	292	249	275	207	199 r	149 r	139	-49.5
Gas ¹⁴	29,238	28,324	-3.1	10,742	4,666	3,194	10,636	11,273	5,408	2,794	8,849	-16.8
Electricity	8,630	8,709	+0.9	2,582	1,851	1,640	2,557	2,678	1,799	1,693	2,539	-0.7
Petroleum	3,038	3,192	+5.1	995	529	567	947	1,212	529	572 r	879	-7.2
Total	45,405	43,995	-3.1	15,516 r	8,088 r	6,493	15,304 r	16,355 r	8,678 r	5,969 r	12,995	-15.1
Other final users ¹⁶												
Coal	588	443	-24.7	215	116	79	179	169 r	88 r	65 r	121	-32.4
Other solid fuel ¹³	191	84	-56.0	45	51	32	64	18	23	20	23	-64.1
Gas ¹⁴	8,056	8,199	+1.8	2,942	1,611	1,009	2,494	2,932	1,743 r	1,209	2,315	-7.2
Electricity	7,121	7,320	+2.8	1,932	1,602	1,594	1,992	1,902	1,708	1,700	2,010	+0.9
Petroleum	4,449	4,305	-3.2	1,355	937	909	1,249	1,310	982	945 r	1,068	-14.5
Total	20,405	20,350	-0.3	6,489	4,317	3,623	5,978	6,331 r	4,544 r	3,939 r	5,537	-7.4
Total final users ⁵	152,305	151,630	-0.4	43,739 r	33,429 r	31,283	43,856 r	44,817 r	34,611 r	31,111 r	41,094	-6.3
FINAL CONSUMPTION BY FUEL ¹²												
Coal	7,561	6,935	-8.3	1,969 r	1,708 r	1,790	2,097 r	2,139 r	1,645 r	1,640 r	1,511	-28.0
Other solid fuel ¹³	5,457	4,984	-8.7	1,438	1,423	1,201	1,397	1,273 r	1,305 r	1,146 r	1,260	-9.8
Coke oven gas	498	531	+6.6	129	131	116	121	134	133 r	131	133	+6.6
Gas ¹⁴	48,050	48,617	+1.2	16,847	8,630	6,355	16,220	17,666 r	10,003 r	6,386 r	14,562	-10.2
Electricity	24,560	24,969	+1.7	6,751	5,597	5,373	6,839	6,890 r	5,723	5,472 r	6,884	+0.7
Petroleum	66,173	65,596	-0.9	16,604	15,940	16,448	17,182	16,715 r	15,801 r	16,336 r	16,744	-2.6
Total all fuels ⁵	152,305	151,630	-0.4	43,739 r	33,429 r	31,283	43,856 r	44,817 r	34,611 r	31,111 r	41,094	-6.3

1. Annual data include estimated production from renewable sources of energy (e.g. solid waste, landfill gas, etc). 2. Crude petroleum and natural gas liquids. Annual data include extended well-test production. 3. Excluding gas flared or re-injected. 4. Nuclear, natural flow hydro and generation at wind stations. 5. Includes small amounts of solar and geothermal heat. 6. Crude petroleum, process oils and petroleum products. 7. Stock fall (+) or stock rise (-). 8. Petroleum and natural gas. 9. Supply greater than recorded demand (—). 10. A more detailed analysis of the 1993 figures is shown in the Digest of United Kingdom Energy Statistics 1994 Tables 1 and 3. 11. Losses in conversion and distribution and used by fuel industries. 12. Deliveries, except for natural gas, electricity and iron and steel industry use of solid fuels. 13. Coke and other manufactured solid fuels. 14. Includes colliery methane. 15. Includes use in transport-related premises, eg. airports, warehouses, etc. 16. Mainly public administration, commerce and agriculture.

COAL & OTHER SOLID FUELS

TABLE 4. Coal production and foreign trade

Thousand tonnes

	Production			Net imports	Imports ²	Exports ³
	Total ¹	Deep-mined	Opencast			
1990	92,762	72,899	18,134	+12,476	14,783	2,307
1991	94,202	73,357	18,636	+17,787	19,611	1,824
1992	84,493	65,800	18,187	+19,366	20,339	973
1993	68,199	50,457	17,006	+17,286	18,400	1,114
1994 p	48,030	31,102	16,614	+13,817	15,041	1,225
Per cent change	-29.6	-38.4	-2.3		-18.3	9.9
1994 Jan-Apr	16,118	11,167	4,837	+5,429	5,869	440
1995 Jan-Apr p	15,888	10,952	4,778	+4,959	5,151	192
Per cent change	-1.4	-1.9	-1.2		-12.2	-56.3
1994 Feb	4,399	3,101	1,274	+1,354	1,509	155
Mar*	5,068	3,365	1,664	+1,375	1,498	123
Apr	3,467	2,297	1,144	+1,175	1,245	70
Total	12,934	8,763	4,082	+3,904	4,252	348
1995 Feb	4,173	2,908	1,240	+1,061	1,085	24
Mar*	5,360	3,661	1,674	+1,453	1,500	47
Apr p	3,747	2,552	1,136	+1,053	1,100	47
Total	13,280	9,121	4,050	+3,566	3,685	119
Per cent change	+2.7	+4.1	-0.8		-13.3	-65.9

1. Includes an estimate for slurry. 2. To December 1992, as recorded in the Overseas Trade Statistics of the United Kingdom (OTS). From January 1993 import figures include an additional estimate for unrecorded trade. Import figures for recent months are estimated using information available for extra-EC trade until monthly statistics for intra-EC trade become available from the Central Statistical Office. 3. To give a more complete picture, HM Custom and Excise export data has been used in place of British Coal's shipments

TABLE 5. Inland coal use

Thousand tonnes

	Fuel producers consumption					Final users (disposals by collieries and opencast sites)		
	Primary		Secondary			Industry ²	Domestic ²	Other ³
	Total	Collieries	Electricity generators	Coke ovens	Other conversion industries ¹			
1990	108,256	117	84,014	10,852	1,544	6,283	4,239	1,208
1991	107,513	112	83,542	10,011	1,501	6,426	4,778	1,144
1992	100,620	79	78,509	9,031	1,319	6,581	4,156	945
1993	86,783	48	66,163	8,479	1,329	5,300	4,638	826
1994 p	81,717	22	62,387	8,595	1,190	4,926	3,876	721
Per cent change	-5.8	-52.9	-5.7	+1.4	-10.5	-7.1	-16.4	-12.8
1993 Jan-Apr	30,298	13	23,449	2,803	444	1,739	1,542	307
1994 Jan-Apr p	29,857	2	23,347	2,848	303	1,739	1,283	335
Per cent change	-1.5	-82.9	-0.4	1.6	-31.7	(-)	-16.8	9.0
1994 Feb	7,847	3	6,189 r	659	119	378 r	417	83 r
Mar*	8,793 r	5	6,722 r	817	111	605 r	436 r	98 r
Apr	6,453	3	4,868	670	86	360	409	57
Total	23,093	11	17,778	2,146	316	1,343	1,262	237
1995 Feb	7,213 r	—	5,861	657	50	311 r	260 r	73
Mar*	9,036	—	7,064	842	90	530	362	148
Apr p	5,973	1	4,396	669	83	477	330	16
Total	22,222	1	17,322	2,168	223	1,319	952	237
Per cent change	-3.8	-88.8	-2.6	+1.0	-29.4	-1.8	-24.5	-0.1

1. Low temperature carbonisation and patent fuel plants. 2. Includes estimates of imports. 3. Public administration, commerce and agriculture.

TABLE 6. Stocks of coal at end of period

Thousand tonnes

	Distributed					Total undistributed stocks
	Total ¹	Total distributed stocks	Electricity generators ²	Coke ovens	Other	
1990	37,760	28,747	27,112	1,564	70	9,013
1991	43,321	32,344	30,648	1,631	65	10,977
1992	47,207	33,493	32,173	1,271	49	13,714
1993	45,860	29,872	28,579	1,218	75	15,989
1994 p	26,572	15,301	14,102	1,098	101	11,271
1994 Feb	41,438	27,041	25,834	1,153	55	14,397
Mar*	39,157	26,097	24,981	1,054	62	13,060
Apr	37,315	24,390	23,246	1,029	116	12,925
1995 Feb	22,008	12,071	10,926	1,058	86	9,937
Mar*	20,224	11,193	9,921	1,199	73	9,031
Apr p	19,140	10,514	9,422	1,024	69	8,625
Absolute change: in latest month on a year ago	-1,084 -18,176	-678 -13,876	-499 -13,824	-175 -5	-4 -47	-406 -4,300

1. Excluding distributed stocks held in merchants' yards, etc., mainly for the domestic market, and stocks held by the industrial sector. 2. Coal fired power stations belonging to major power producers only (see box below Table 23).

TABLE 7. Other solid fuel production, foreign trade and use

Thousand tonnes

	Coke and breeze						Other manufactured solid fuels ¹				
	Consumption						Consumption				
	Production	Net imports ²	Iron and steel industry ³	Other industry ^{4,5}	Domestic ⁵	Total use	Production	Net Imports ²	Domestic	Industry ⁴	Total use
1990	7,707	14	6,668	542	569	7,779	1,139	-21	1,149	64	1,213
1991	7,163	55	6,344	450	469	7,263	1,198	43	1,179	21	1,200
1992	6,528	305	6,115	515	395	7,025	1,056	55	1,068	21	1,089
1993	6,093	514	5,928	546	285	6,760	1,111	9	1,127 r	22	1,149 r
1994 p	6,202	231	6,168	413	158	6,739	1,034	-27	904	69	973
Per cent change	+1.8		+4.0	-24.5	-44.4	-0.3	-6.9		-19.9	(+)	-15.4
1993 2nd quarter	1,515	181	1,578	128	81	1,787	259	7	303 r	5	309 r
3rd quarter	1,539	92	1,338	118	44	1,500	285	-3	269 r	5	274 r
4th quarter	1,524	172	1,458	169	92	1,719	276	-1	269 r	8	277 r
1994 1st quarter p	1,522	36	1,481	136	57	1,675	310	1	267	15	282
2nd quarter p	1,561	75	1,628	96	50	1,775	252	-1	260	19	279
3rd quarter p	1,565	99	1,464	75	31	1,571	250	-13	191	18	209
4th quarter p	1,554	21	1,595	104	20	1,719	221	-13	162	17	180
1995 1st quarter p	1,550	1	1,536	83	22	1,642	183	-22	189	23	212
Per cent change	+1.9		+3.7	-38.8	-62.1	-2.0	-41.0		-29.2	+54.7	-24.8

1. These include Homefire, Ancit, Phurnacite and fuel produced by low temperature carbonisation. 2. The latest quarter's import figures are estimated. They will be revised when the intra-EC trade data becomes available from the Central Statistical Office. 3. Includes an estimate of iron foundries' consumption. 4. Includes own use by fuel producers. 5. Includes an estimate of imports.

GAS

TABLE 8. Natural gas production and supply

	Gross gas production ¹	Exports	Imports	Gas available ²	Indigenous	Imported	Gas transmitted ³
	GWh			Percentage of gas available for consumption in UK			GWh
1990	527,583	—	79,833	569,235	86.0	14.0	568,037
1991	587,825	—	72,007	623,437	88.4	11.6	616,194
1992	597,854	620	61,255	619,286	90.1	9.9	619,921
1993	703,976	6,824	48,528	704,388	93.1	6.9	701,991
1994 p	755,383	9,557	33,053	728,631	95.5	4.5	729,374
Per cent change	+7.3	+40.0	-31.9	+3.4			+3.9
1994 Jan-Apr	322,639	3,373	16,732	319,068	94.8	5.2	322,992
1995 Jan-Apr p	341,976	3,430	6,745	326,210	97.9	2.1	327,027
Per cent change	+6.0	+1.7	-59.7	+2.2			+1.2
1994 Feb	86,665	848	3,813	85,750	95.6	4.4	87,120
Mar	78,128	793	4,276	77,308	94.5	5.5	78,228
Apr	67,124	809	4,072	65,854	93.8	6.2	66,854
Total	231,917	2,450	12,161	228,912	94.7	5.3	232,202
1995 Feb	84,119	807	1,216	79,907	98.5	1.5	79,946
Mar	90,231	936	2,137	86,689	97.5	2.5	86,428
Apr p	66,448	750	1,113	62,365	98.2	1.8	63,322
Total	240,798	2,493	4,466	228,961	98.0	2.0	229,696
Per cent change	+3.8	+1.8	-63.3	+0.0			-1.1

1. Includes waste and own use for drilling, production and pumping operations but excludes gas flared. 2. Gas available for consumption in the UK. It excludes waste, own use, gas flared and stock change. Includes net imports. 3. Gas input into inland transmission systems. It includes public gas supply, direct supply by North Sea producers, third party supplies, and stock changes. Figures differ from gas available for consumption in the UK mainly because of stock changes. The figures also differ from total consumption (expressed in oil equivalent in table 2) because they exclude producers' and operators' own use and losses.

TABLE 9. Natural gas consumption^{1,2}

GWh

	Total	Electricity generators ³	Iron and steel industry	Other industries	Domestic	Other ⁴
1990	559,118	6,410	13,530	151,865	300,410	86,903
1991	600,318	7,296	11,854	140,728	333,963	100,176
1992	600,444	20,210	13,006	138,310	330,101	98,817
1993	673,522	88,598	14,134	137,270	340,167	93,353
1994	711,129	116,016	16,570	153,595	329,541	95,407
Per cent change	+5.6	+30.9	+17.2	+11.9	-3.1	+2.2
1992 1st quarter	207,330	3,026	3,436	40,057	123,333	37,478
2nd quarter	109,181	1,946	1,025	33,034	54,705	18,471
3rd quarter	79,292	5,615	3,385	25,448	34,873	9,971
4th quarter	204,641	9,623	5,160	39,771	117,190	32,897
1993 1st quarter	218,698	15,102	4,071	40,465	124,977	34,083
2nd quarter	126,643	20,646	3,268	29,788	54,277	18,664
3rd quarter	101,927	22,824	3,048	27,179	37,173	11,703
4th quarter	226,254	30,026	3,747	39,838	123,740	28,903
1994 1st quarter	245,019	30,964	4,336	44,453	131,158	34,108
2nd quarter	149,517	26,161	3,906	36,235	62,931	20,284
3rd quarter	108,483	28,641	4,340	28,928	32,501	14,073
4th quarter	208,110	30,250	3,988	43,979	102,951	26,942
Per cent change	-8.0	+0.7	+6.4	+10.4	-16.8	-6.8

1. Gas consumption is generally less than gas transmitted (Table 8) on an annual basis because of own use and losses in transmission. 2. Includes natural gas sales to the non-tariff sector by independent gas suppliers. 3. For coverage of electricity generators see definitions below Table 23 (see also Technical note on page 2 in the July 1992 issue). 4. Public administration, commerce and agriculture.

PETROLEUM

TABLE 10. Drilling activity¹

Number of wells started

	Offshore				Onshore	
	Exploration	Appraisal	Exploration & appraisal	Development ²	Exploration & appraisal	Development
1990	159	65	224	124	13	23
1991	107	79	186	144	11	3
1992	74	57	131	167	6	8
1993	51	59	110	162	2	9
1994	62	37	99	202	3	13
Per cent change	+21.6	-37.3	-10.0	+24.7	+50.0	+44.4
1993 1st quarter	13	18	31	38	1	2
2nd quarter	6	14	20	44	—	1
3rd quarter	10	16	26	35	1	4
4th quarter	22	11	33	45	—	2
1994 1st quarter	12	6	18	44	1	1
2nd quarter	13	10	23	50	1	3
3rd quarter	19	7	26	59	1	4
4th quarter	18	14	32	49	—	5
1995 1st quarter p	10	6	16	71	—	4
Per cent change	-16.7	—	-11.1	+61.4	-100.0	+300.0

1. Including sidetracked wells. 2. Development wells are production and appraisal wells drilled after development approval has been granted.

TABLE 11. Value of, and investment in, UKCS oil and gas production

£ million

	Total income ¹	Operating costs	Exploration expenditure	Gross trading profits ¹ (net of stock appreciation)	Percentage contribution to GDP ²	Capital investment	Percentage contribution to industrial investment ³
1990	12,024	2,892	1,637	7,040	1.7	3,560	15
1991	12,128	3,301	1,955	6,433	1.5	5,126	21
1992	12,153	3,316	1,508	6,716	1.5	5,418	22
1993	13,850	3,661	1,213	8,112	1.7	4,664	20
1994	15,938	3,866	939	9,720	2.0	3,546	16
Per cent change	+15.1	+5.6	-22.6	+19.8		-30.0	
1993 1st quarter	3,620	840	298	2,272	2.0	1,230	21
2nd quarter	2,843	899	267	1,440	1.3	1,333	23
3rd quarter	3,173	921	306	1,713	1.5	1,119	19
4th quarter	4,206	998	342	2,688	2.2	982	16
1994 1st quarter	3,987	905	211	2,588	2.1	730	14
2nd quarter	3,786	941	225	2,261	1.9	938	18
3rd quarter	3,568	988	234	1,990	1.6	956	17
4th quarter	4,604	1,031	269	2,882	2.2	922	15
1995 1st quarter p	5,002	918	220	3,436		905	
Per cent change	+25.5	+1.4	+4.3	+32.8		+23.9	

1. Includes sales of crude oil, NGLs and natural gas plus other income associated with oil and gas production. 2. Contribution of sector to GDP at factor cost. 3. Investment by energy, water supply and the manufacturing sectors.

TABLE 12. Indigenous production, refinery receipts, arrivals and shipments

	Indigenous production ¹			Refinery receipts			Foreign trade ^{6,7}						
							Crude oil and NGLs		Process oils		Petroleum products		
	Total	Crude oil	NGLs ²	Indigenous ³	Other ⁴	Net foreign arrivals ⁵	Arrivals	Shipments	Arrivals	Shipments	Arrivals	Shipments	Bunkers ⁸
	Million tonnes						Thousand tonnes						
1990	91.6	88.0	3.6	37,754	916	51,065	42,074	54,131	10,636	1,769	11,005	18,002	2,538
1991	91.3	86.8	4.4	35,932	772	55,819	45,800	52,565	11,284	1,237	10,140	20,677	2,486
1992	94.3	89.2	5.1	35,472	832	56,485	46,753	54,779	10,930	1,198	10,567	21,899	2,546
1993	100.1	94.0	6.1	36,680	852	59,868	50,601	60,556	11,100	1,834	10,064	24,890	2,478
1994 p	126.7	119.0	7.7	42,174	427	51,170	42,898	77,899	10,198	1,926	10,441	24,644	2,313
Per cent change	+26.6	+26.6	+26.2	+15.0	-49.8	-14.5	-15.2	+28.6	-8.1	+5.0	+3.7	-1.0	-6.7
1994 Jan-Apr	40.5	37.8	2.7	12,789	69	17,423	14,419	25,970	3,498	494	3,404	7,822	772
1995 Jan-Apr p	44.7	41.7	3.0	14,031	187	14,198	12,634	27,298	2,247	683	3,465	7,168	770
Per cent change	+10.4	+10.3	+11.1	+9.7	+169.2	-18.5	-12.4	+5.1	-35.8	+38.2	+1.8	-8.4	-0.2
1994 Feb	9.4	8.7	0.7	2,851	-79	3,789	3,108	6,514	861	180	951	1,760	168
Mar	10.5	9.8	0.7	3,026	12	4,712	3,952	6,827	857	97	1,030	1,736	189
Apr	10.3	9.7	0.6	3,274	97	4,096	3,296	6,640	903	104	767	1,969	204
Total	30.2	28.2	2.0	9,151	31	12,597	10,356	19,980	2,621	380	2,748	5,465	561
1995 Feb	10.6	9.8	0.7	3,354	96	3,468	3,189	6,428	437	158	942	1,577	178
Mar	11.6	10.8	0.8	3,670	120	3,271	3,008	7,310	491	227	915	1,874	192
Apr p	11.2	10.5	0.7	3,691	-8	3,491	2,821	6,696	791	122	910	1,759	224
Total	33.4	31.2	2.2	10,715	208	10,230	9,018	20,434	1,179	507	2,767	5,209	594
Per cent change	+10.7	+10.6	+12.6	+17.1	(+)	-18.8	-12.9	+2.3	-34.4	+33.3	+0.7	-4.7	5.9

1. Includes for convenience offshore and land production. 2. Condensates and petroleum gases derived at onshore treatment plants. 3. Crude oil plus NGLs. 4. Mainly recycled products (backflows to refineries). 5. Total arrivals less refinery shipments of crude oil, NGL's and process oils (ie partly refined oils). 6. Foreign trade recorded by the Petroleum Industry and may differ from figures published in the Overseas Trade Statistics. 7. 1994 data are subject to further revision as additional information on arrivals of petroleum products becomes available. 8. International marine bunkers.

TABLE 13. Refinery throughput and output of petroleum products

Thousand tonnes

	Refinery use			Gases		Kerosene								
	Throughput of crude and process oil	Fuel	Losses/ (gains)	Total ¹ output of petroleum products	Butane and propane	Other petroleum	Naphtha (LDF)	Motor spirit	Aviation turbine fuel	Burning oil	Gas/ diesel oil	Fuel oil	Lubricating oils	Bitumen
1990	88,692	5,838	568	82,286	1,514	106	2,139	26,724	7,541	2,309	23,402	13,805	974	2,454
1991	92,001	6,058	467	85,476	1,664	134	2,515	27,793	7,037	2,446	26,057	13,205	973	2,302
1992	92,334	6,080	471	85,783	1,583	172	3,040	27,980	7,681	2,450	25,650	12,388	1,163	2,336
1993	96,274	6,383	308	89,584	1,575	162	2,696	28,394	8,341	2,707	27,361	13,183	1,264	2,450
1994 p	93,162	6,256	261	86,644	1,605	132	2,794	27,562	7,697	2,967	27,137	11,378	1,296	2,569
Per cent change	-3.2	-2.0	-15.3	-3.3	+1.9	-18.5	+3.6	-2.9	-7.7	+9.6	-0.8	-13.7	+2.5	+4.9
1994 Jan-Apr	30,137	2,085	180	27,872	512	34	967	9,022	2,351	1,284	8,408	3,688	423	724
1995 Jan-Apr p	29,014	2,095	13	26,906	595	49	977	8,356	2,304	1,147	8,605	3,199	452	729
Per cent change	-3.7	+0.5	-92.8	-3.5	+16.0	+44.1	+1.0	-7.4	-2.0	-10.7	+2.3	-13.3	+6.9	+0.7
1994 Feb	6,620	466	62	6,093	103	5	222	2,003	480	322	1,814	805	85	157
Mar	7,342	517	6	6,819	131	7	224	2,188	517	382	2,088	839	96	226
Apr	7,753	523	69	7,161	138	12	246	2,292	671	262	2,139	966	113	206
Total	21,715	1,506	137	20,072	372	24	692	6,483	1,668	965	6,040	2,610	295	589
1995 Feb	6,591	479	—	6,112	124	12	234	1,897	486	248	2,006	724	104	169
Mar	7,852	551	31	7,270	155	12	238	2,274	597	338	2,296	867	119	240
Apr p	6,842	492	-23	6,374	158	13	228	1,984	615	214	1,956	753	120	201
Total	21,285	1,523	6	19,756	438	37	700	6,154	1,698	800	6,258	2,344	344	610
Per cent change	-2.0	+1.1	-95.6	-1.6	+17.7	+54.2	+1.2	-5.1	+1.8	-17.1	+3.6	-10.2	+16.6	+3.6

1. Including aviation spirit, wide cut gasoline industrial and white spirit, petroleum wax and miscellaneous products.

TABLE 14. Deliveries of petroleum products for inland consumption^{1,2}

Thousand tonnes

	Total ^{1,2,3}	Butane ⁴ and propane	Naphtha ⁵ (LDF) and Middle distillate feedstock	Motor Spirit		Aviation turbine fuel	Kerosene		Gas/diesel oil		Fuel oil ⁶	Ori-mulsion	Bitumen	Lubri-cating oils
				Total	of which Unleaded		Premier	Standard domestic	Derv fuel	Other				
1990	73,943	1,969	3,477	24,312	8,255	6,589	41	1,526	10,652	8,046	11,842	155	2,491	822
1991	74,506	2,273	3,898	24,021	9,868	6,176	45	1,779	10,694	8,031	11,530	418	2,514	759
1992	75,470	1,890	3,965	24,044	11,268	6,666	39	1,875	11,132	7,871	10,195	1,286	2,555	786
1993	75,790	1,992	3,777	23,766	12,503	7,106	35	2,002	11,806	7,782	9,354	1,416	2,523	806
1994 p	74,957	2,486	3,525	22,843	13,162	7,284	29	2,029	12,914	7,491	8,048	1,227	2,595	795
Per cent change	-1.1	+24.8	-6.7	-3.9	+5.3	+2.5	-17.1	+1.3	+9.4	-3.7	-14.0	-13.3	+2.9	-1.4
1994 Jan-Apr	24,915	766	1,190	7,354	4,115	2,101	16	962	4,052	2,781	2,994	399	783	257
1995 Jan-Apr p	24,654	846	1,382	7,003	4,280	2,141	12	882	4,303	2,665	2,691	393	710	289
Per cent change	-1.0	+10.4	+16.1	-4.8	+4.0	+1.9	-25.0	-8.3	+6.2	-4.2	-10.1	-1.5	-9.3	+12.5
1994 Feb	6,054 r	203 r	280	1,743 r	966	462 r	4	277	969	726	717	147	167	61
Mar	6,866 r	169 r	296	2,010	1,128	549 r	4	360	1,153 r	769	749	115	276	69
Apr	6,014	195	292	1,891	1,070	554	3	109	1,013	609	718	85	198	64
Total	18,963	567	868	5,644	3,164	1,565	11	746	3,135	2,104	2,184	347	641	194
1995 Feb	6,090	176	408	1,653	1,008	492	3	229	1,045	647	798	78	186	70
Mar	6,787	237	346	1,929	1,185	549	3	262	1,239	758	659	112	229	82
Apr p	5,845	226	279	1,788	1,100	573	2	160	1,060	564	495	146	165	70
Total	18,722	639	1,033	5,370	3,293	1,614	8	651	3,344	1,969	1,952	336	580	222
Per cent change	-1.3	12.7	19.0	-4.9	4.1	3.1	-27.3	-12.7	6.7	-6.4	-10.6	-3.2	-9.5	14.4

1. Including other petroleum gases, aviation spirit, industrial and white spirits, petroleum wax, non-domestic standard burning oil and miscellaneous products. 2. 1994 data are subject to further revision as additional information on arrivals of petroleum products contributes to deliveries. 3. Excluding refinery fuel. 4. Including amounts for petro-chemicals. 5. Mainly for petro-chemical feedstock. 6. Excludes Orimulsion.

TABLE 15. Deliveries of petroleum products for inland consumption: energy uses¹

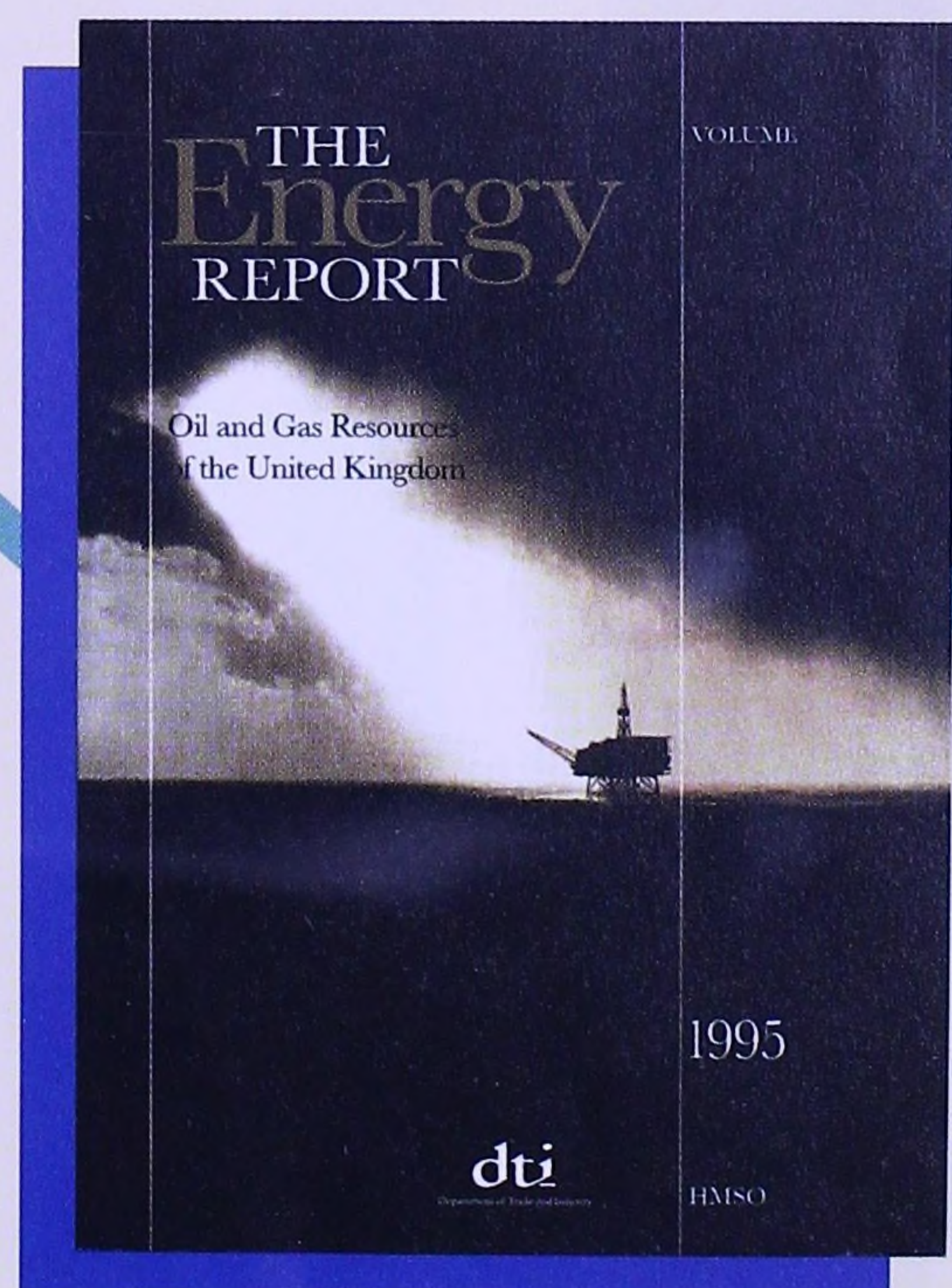
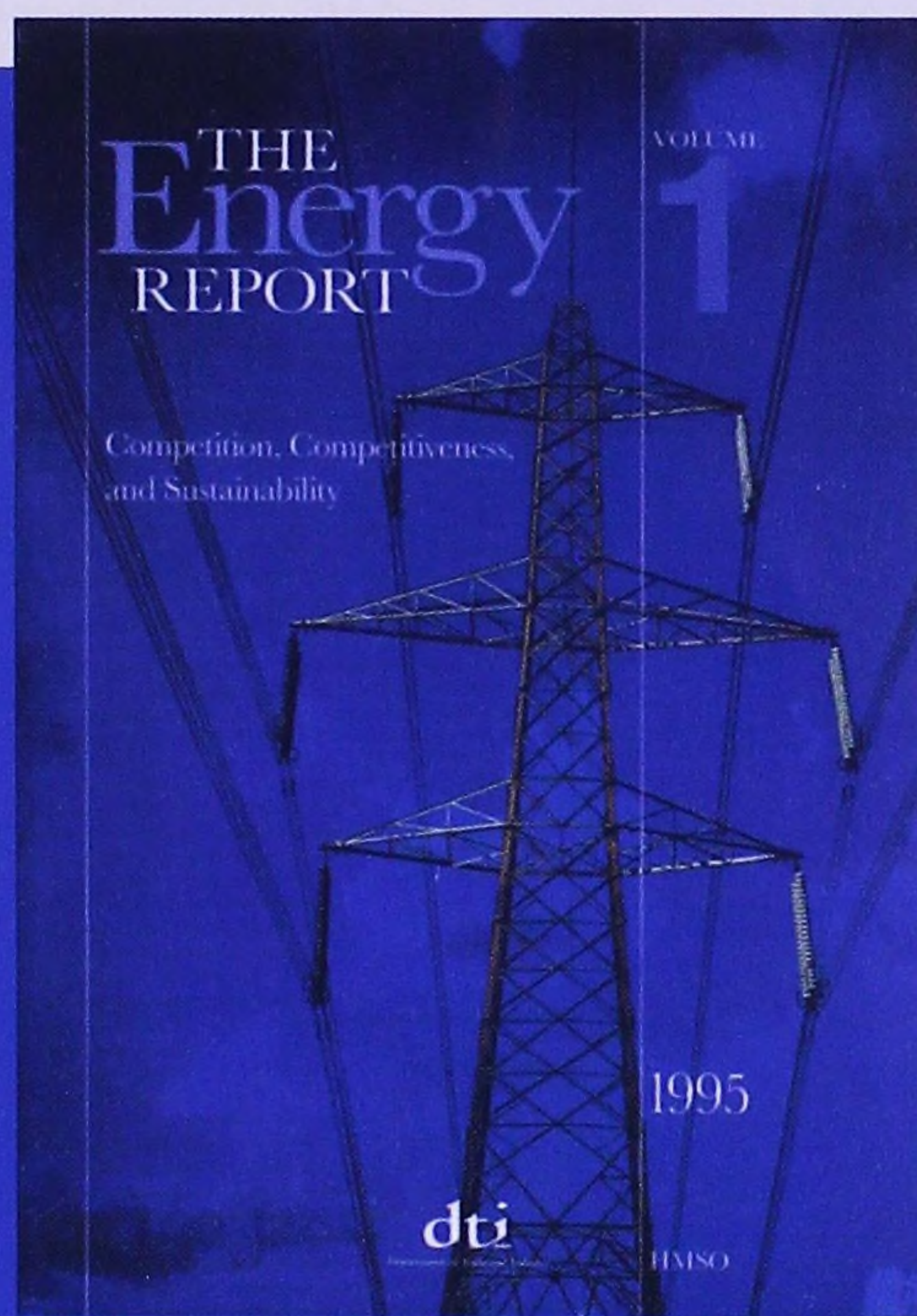
Thousand tonnes

	Total	Electricity ²	Gas works	Iron and Steel ²	Other ²	Transport ³	Domestic	Other ⁴
		generators		industry	industries			
1990	64,774	7,272	52	701	6,959	43,454	2,219	4,117
1991	64,553	6,728	50	703	7,520	42,864	2,522	4,166
1992	64,839	6,424	42	676	7,117	43,789	2,579	4,212
1993	65,065	5,223	44	854	7,518	44,569	2,714	4,145
1994 p	63,780	4,252	50	832	7,094	44,830	2,701	4,021
Per cent change	-2.0	-18.6	+14.6	-2.6	-5.6	+0.6	-0.5	-3.0
1994 Jan	5,134 r	350	11	69	727 r	3,303 r	279 r	395
Feb	5,263 r	397	6	70	728 r	3,323 r	339	400
Apr	5,934 r	412	5	58	733	3,874	427	425
Total	16,331	1,158	22	197	2,188	10,500	1,044	1,221
1995 Jan	5,053 r	352	6	99	638 r	3,265	293 r	400
Feb	5,135	460	5	57	638 r	3,334	284 r	357
Mar p	5,733	371	5	57	683	3,884	326	407
Total	15,921	1,184	16	213	1,958	10,483	903	1,164
Per cent change	-2.5	+2.2	-26.1	+8.1	-10.5	-0.2	-13.5	-4.7

1. 1994 data are subject to further revision as additional information on arrivals of petroleum products contributes to deliveries for energy uses. 2. For coverage of electricity generators see definitions below Table 23 (see also Technical notes on page 2 of July 1992 issue). 3. Includes coastal shipping and fishing. 4. Mainly public administration, commerce and agriculture.

*'A wealth of information and comment
which comprehensively illuminates
the UK energy scene.'*

**Tim Eggar,
Minister for Industry and Energy**



The Energy Report

1995

Volume **1** Competition and Sustainability

A comprehensive summary of developments in the energy sector. The main themes of the report are the contribution the Government's market reforms are making to the improvement of the UK's relative competitive position, sustainable development, and the growing environmental potential scale of the environmental impact of energy use. It covers:

- The transition from a sector dominated by state-owned companies in most areas towards fully competitive markets
- The role of energy in improving the productivity and competitiveness of UK companies
- The internationalisation of UK energy companies
- The impact of environmental issues on energy production and consumption
- The uncertain future of trends in energy demand

Contents:

Ministerial Foreword

Part One: The Main Themes

Introduction

Competition in energy markets

Energy costs, energy efficiency, and industrial competitiveness

Future uncertainties

Energy and the environment

International energy and environment issues

Part Two: The Energy Industries

The energy industries

Coal

Electricity

Gas supply

Oil and gas production

Downstream oil

Annex

Summary of main events in 1995/96

Appendices

April 1995 297x210mm 222 pages with charts and tables

0 11 515362 4 Paperback **£25**

on,
iveness
anability

s in the UK Energy
competitiveness, and the
l energy policies make to
mic position; and
ecognition of the
s associated with energy

y state-owned monopolies
arkets for all fuels
national competitiveness

panies
e energy industry
se

competitiveness

y s

s and graphs

Oil and Gas Resources of the Volume 2 United Kingdom

Also known as the *Brown Book*, Volume 2 of the *Energy Report 1995* provides a considerable amount of detail on oil and gas production. It sets out:

- The historical context for events that occurred in 1994
- The importance of the oil and gas sector in the UK economy
- Details of exploration, appraisal and development activity
- The levels of oil and gas reserves
- Information about the UK licensing regime
- Detailed information on individual oil and gas fields

Contents

Ministerial foreword
Historical overview
Economic impact
Regulatory regime
Exploration, appraisal and licensing
Reserves
Development
Production and disposal activities
Review of fields
Appendices
Colour maps showing UK oil and gas activity

April 1995 297x210mm 212 pages with charts, tables, graphs and colour maps
0 11 515363 2 Paperback £40

The *Energy Report 1995* is
published by HMSO Books
for the Department of Trade
and Industry

Standing Order Form

Both volumes of the **Energy Report** are **available on standing order**, enabling you to receive future editions as soon as they are published, thus **saving you the time, trouble and expense** of placing an individual order every year. If you would like to take advantage of this service to receive the **1995 Report** and all subsequent editions please complete this order form. No payment is required at this stage. As a Standing Order customer an account will be opened in your name and a monthly statement issued detailing your orders.

Complete and return to: HMSO Publications Centre, Standing Orders, PO Box 276, London SW8 5DT

- ☐ Please open an HMSO Account on my behalf to supply *The Energy Report Volume 1* on a Standing Order basis. Standing Order classification 12 01 033
- ☐ Please open an HMSO Account on my behalf to supply *The Energy Report Volume 2* on a Standing Order basis. Standing Order classification 12 01 018

PLEASE COMPLETE IN BLOCK CAPITALS

Name.....

Address

Postcode

Do not include any payment with this form. When your account has been opened you will receive a monthly statement detailing your orders and will automatically receive the volume(s) you have indicated above and all subsequent editions.

Standing Orders Terms and Conditions

Standing order requests can only be accepted in writing. Once placed they will continue until formally cancelled in writing. No returns will be accepted unless HMSO has supplied incorrectly or the goods have arrived in a damaged condition. Claims for non-receipt will be accepted only if made within the period of three months of invoice date (six months for overseas customers).



HMSO Books are available from:

• **HMSO Bookshops** • **HMSO Agents** (see *Yellow Pages: Booksellers*) • **All good booksellers**

Alternatively, they can be ordered in the following ways:

By mail order: Please complete this form and return it to the HMSO Bookshop address nearest to you (see list below) or to HMSO Publications Centre, PO Box 276, London SW8 5DT

By telephone: Please ring **0171 873 9090** and quote your Access/Visa/Amex/Connect **credit card** number, or your **HMSO account** number

By fax: Please complete the **credit card** or the **HMSO account** section of the order form below and fax to **0171 873 8200**, or any of the numbers listed below

Note: Account holders should note that credit card transactions will not be shown on their statements

HMSO Bookshops

London:	49 High Holborn, London WC1V 6HB		Fax: 0171 831 1326
Edinburgh:	71 Lothian Road, Edinburgh EH3 9A2	Tel: 0131 228 4181	Fax: 0131 229 2734
Belfast:	16 Arthur Street, Belfast BT1 4GD	Tel: 01232 238451	Fax: 01232 235401
Cardiff:	HMSO Oriel Bkshop, The Friary, Cardiff CF1 4AA	Tel: 01222 395548	Fax: 01222 384347
Birmingham:	68-69 Bull Street, Birmingham B4 6AD	Tel: 0121 236 9696	Fax: 0121 236 9699
Manchester:	9-21 Princess Street, Manchester M60 8AS	Tel: 0161 834 7201	Fax: 0161 833 0634
Bristol:	33 Wine Street, Bristol BS1 2BQ	Tel: 0117 926 4306	Fax: 0117 929 4515

Please send me

.....copy (ies) of *The Energy Report 1995, Volume 1, Competition, Competitiveness and Sustainability* @ **£25** ISBN 0 11 515362 4

.....copy (ies) of *The Energy Report 1995, Volume 2, Oil and Gas Resources of the United Kingdom* @ **£40** ISBN 0 11 515363 2

FREE – post and packing

☐ Debit my Access/Visa/Amex/Connect Acc No.

<input type="text"/>	<input type="text"/>	<input type="text"/>	<input type="text"/>	<input type="text"/>	<input type="text"/>	<input type="text"/>	<input type="text"/>	<input type="text"/>	<input type="text"/>	<input type="text"/>	<input type="text"/>	<input type="text"/>	<input type="text"/>	<input type="text"/>	<input type="text"/>	<input type="text"/>	<input type="text"/>	<input type="text"/>	<input type="text"/>
----------------------	----------------------	----------------------	----------------------	----------------------	----------------------	----------------------	----------------------	----------------------	----------------------	----------------------	----------------------	----------------------	----------------------	----------------------	----------------------	----------------------	----------------------	----------------------	----------------------

Signature.....Expiry date.....

☐ I enclose a cheque for £.....made payable to 'HMSO Books'

☐ Please charge to my HMSO Account No.....

PLEASE COMPLETE IN BLOCK CAPITALS:

Name.....

Address.....

.....

Postcode.....353/1234

☐ Please tick if you do **not** wish to receive further details on HMSO Books



TABLE 16. Stocks of petroleum¹ at end of period

Thousand tonnes

	Crude oil and refinery process oil				Petroleum products					Total Stocks		
	Refineries ²	Terminals ³	Offshore ⁴	Total	Light ⁵ distillates	Kerosene & gas/diesel ⁶	Fuel oils ⁷	Other products ⁸	Total pet prod	Net bilaterals ⁹	Stocks in UK ¹⁰	Total stock
1990	5,484	982	494	6,960	2,424	3,039	3,206	1,224	9,892	1,539	15,313	16,852
1991	5,379	1,383	369	7,131	2,663	3,092	3,578	1,394	10,727	1,727	16,131	17,858
1992	5,699	1,178	482	7,358	2,502	2,716	3,488	1,394	10,100	1,964	15,494	17,458
1993	5,573	1,642	457	7,671	2,734	2,906	3,346	1,419	10,406	2,024	16,053	18,077
1994 p	5,402	1,720	428	7,651	2,515	2,650	2,884	1,464	9,513	1,543	15,620	17,163
Per cent change	-3.1	+4.8	-6.3	-0.3	-8.0	-8.8	-13.8	+3.2	-8.6	-23.8	-2.7	-5.1
1994 Feb	5,465	1,160	469	7,095	2,913	2,712	2,970	1,304	9,898	1,808	15,185	16,993
Mar	5,522	1,513	476	7,510	2,601	2,398	2,996	1,233	9,228	1,765	14,973	16,738
Apr	5,458	1,290	594	7,443	2,181	2,532	2,856	1,181	8,750	1,284	14,909	16,193
1995 Feb	5,523	1,461	427	7,511	2,609	2,619	2,932	1,479	9,639	1,733	15,417	17,150
Mar	4,845	1,347	429	6,721	2,564	2,499	2,748	1,437	9,249	1,703	14,267	15,970
Apr p	5,494	1,031	475	7,100	2,423	2,361	2,857	1,441	9,082	1,540	14,642	16,182
Per cent change	+0.7	-20.1	-20.0	-4.6	+11.1	-6.8	-	+22.0	+3.8	+19.9	-1.8	-0.1

1. Stocks held at refineries, terminals and power stations. Stocks in the wholesale distribution system and certain stocks at offshore fields (UK Continental Shelf [UKCS]), and others held under approved bilateral agreements are also included. 2. Stocks of crude oil, NGLs and process oil at UK refineries. 3. Stocks of crude oil and NGLs at UKCS pipeline terminals. 4. Stocks of crude oil in tanks and partially loaded tankers at offshore fields (UKCS). 5. Motor spirit and aviation spirit. 6. Aviation turbine fuel, burning oil, gas oil, DERV fuel, middle distillate feedstock (mdf) and marine diesel oil. 7. Including Orimulsion. 8. Ethane, propane, butane, other petroleum gases, naphtha (ldf), industrial and white spirits, bitumen, petroleum wax, lubricating oil, petroleum coke and miscellaneous products. 9. The difference between stocks held abroad for UK use under approved bilateral agreements and the equivalent stocks held in the UK for foreign use. 10. Stocks held in the national territory or elsewhere on the UKCS. 11. Includes 100 thousand tonnes held under approved bilateral agreements.

ELECTRICITY

TABLE 17. Electricity generation, supply and availability

TWh

	Major power producers ¹			Other generators ¹			All generating companies				
	Electricity generation	Own use ²	Electricity supplied (net)	Electricity generation	Own use ²	Electricity supplied (net)	Electricity generation	Own use ²	Electricity supplied (net)	Net imports	Electricity available
1990	298.50	20.52	277.98	21.20	1.72	19.48	319.70	22.24	297.46	11.94	309.40
1991	301.49	20.53	280.96 r	21.32	1.69	19.63	322.80	22.22	300.59	16.41	316.99
1992	300.18	20.74	279.44	20.78	1.75	19.03	320.96	22.49	298.47	16.69	315.16
1993	300.51	19.34	281.17	22.52	1.90	20.62	323.03	21.24	301.79	16.72	318.51
1994 p	303.35	18.53	284.82	21.26	1.71	19.54	324.61	20.25	304.37	16.89	321.25
Per cent change	+0.9	-4.2	+1.3	-5.6	-9.7	-5.2	+0.5	-4.7	+0.9	+1.0	+0.9
1992 3rd quarter	64.41	4.62	59.79	4.73	0.37	4.37	69.14	4.99	64.15	4.09	68.24
4th quarter	81.73	5.58	76.15	5.70	0.40	5.30	87.42	5.98	81.44	4.30	85.75
1993 1st quarter	84.98	5.68	79.30	5.95	0.64	5.31	90.93	6.32	84.61	4.28	88.89
2nd quarter	67.31	4.42	62.88	5.46	0.34	5.11	72.76	4.76	68.00	4.02	71.02
3rd quarter	65.04	4.14	60.90	5.23	0.57	4.66	70.28	4.71	65.57	4.11	69.67
4th quarter	83.18	5.10	78.08	5.87	0.34	5.53	89.05	5.44	83.62	4.30	87.92
1994 1st quarter	85.76	5.00	80.77	5.97	0.51	5.46	91.73	5.50	86.22	4.29	90.52
2nd quarter	70.15	4.45	65.70	4.94	0.40	4.54	75.09	4.85	70.24	4.02	74.26
3rd quarter	66.28	4.24	62.04	4.75	0.41	4.34	71.02	4.65	66.38	4.22	70.60
4th quarter	81.16	4.85	76.31	5.61	0.40	5.21	86.77	5.25	81.53	4.35	85.87
1995 1st quarter p	87.85	5.12	82.73	5.57	0.43	5.14	93.43	5.55	87.87	4.36	92.24
Per cent change	+2.4	+2.5	+2.4	-6.7	-15.3	-5.9	+1.8	+0.9	+1.9	+1.6	+1.9

1. See definitions below Table 23. 2. Used in works and for pumping at pumped storage stations.

TABLE 18. Electricity supplied by other generating companies

GWh

	Industry									
	Electricity supplied (net) Total	Total industry	Nuclear power stations ¹	Petroleum refineries	Iron and steel	Chemicals	Engineering and other metal trades	Food, drink and tobacco	Paper, printing and stationery	Other ^{2,3}
1990	19,487	18,832	3,700	2,468	1,643	4,218	3,929	597	866	1,412
1991	19,633	18,985	3,496	2,534	1,780	4,228	3,949	610	951	1,438
1992	19,034	18,387	2,866	2,726	1,790	3,812	3,670	675	997	1,851
1993	20,618	19,859	4,141	2,754	1,752	4,145	3,451	718	1,243	1,655
1994 p	19,544	18,837	3,543	2,793	1,693	3,839	3,370	704	1,326	1,570
Per cent change	-5.2	-5.1	-14.4	+1.4	-3.4	-7.4	-2.3	-2.0	+6.7	-5.1
1992 4th quarter	5,296	5,120	730	770	456	1,022	1,057	293	233	559
1993 1st quarter	5,308	5,109	970	656	461	1,138	953	192	311	428
2nd quarter	5,115	4,928	1,155	671	418	989	857	103	274	461
3rd quarter	4,664	4,478	838	732	416	955	757	107	314	360
4th quarter	5,531	5,345	1,178	695	457	1,063	884	316	345	406
1994 1st quarter	5,459	5,269	1,286	738	439	961	906	223	299	417
2nd quarter	4,538	4,356	701	673	451	925	845	105	275	381
3rd quarter	4,335	4,177	753	619	401	917	722	98	301	366
4th quarter	5,213	5,035	803	763	402	1,036	897	278	451	406
1995 1st quarter p	5,139	4,942	776	674	445	1,014	925	296	384	428
Per cent change	-5.9	-6.2	-39.7	-8.7	+1.4	+5.5	+2.1	+32.7	+28.4	+2.6

1. Generated by UKAEA and British Nuclear Fuels (BNF) for the public electricity supply system. The UKAEA has ceased to contribute with the closure of its power station in 1994. 2. Including water-works and companies within the service sector. 3. Includes electricity supplied from renewable sources that cannot be attributed to any of the other industrial groups.

TABLE 19. Electricity production and availability from the public supply system¹

TWh

Electricity supplied (net) by type of plant														
Conventional steam plant														
	Electricity generated	Own use ²	Total	Total conventional steam	Coal ³	Oil	Other conventional steam ⁴	CCGT ⁵	Nuclear	Hydro ⁶	Other ⁷	Net imports	Purchases from other sources (net) ^{8,9}	Total electricity available ⁹
1990	298.50	20.52	277.98	218.96	196.62	14.53	7.81	—	54.96	3.65	0.41	11.94	5.36	295.28
1991	301.49	20.53	280.96	217.95	184.04	18.51	17.42	0.31	59.26	3.12	0.31	16.41	5.05	302.41
1992	300.18	20.74	279.44	205.90	169.56	10.46	25.87	2.96	66.27	3.96	0.35	16.69	5.27	301.40
1993	300.51	19.34	281.17	178.31	144.03	8.30	25.97	22.61	76.84	2.95	0.46	16.72	7.31	305.20
1994 p	303.35	18.53	284.82	167.36	138.47	6.03	22.87	36.80	76.39	3.63	0.61	16.89	6.94	308.65
Per cent change	+0.4	-4.2	+1.3	-6.1	-3.9	-27.4	-11.9	+62.8	-0.6	+22.9	+31.7	+1.0	-5.0	+1.1
1994 Jan-Apr	109.23	6.41	102.81	63.68	52.17	2.63	8.87	12.35	24.85	1.72	0.22	5.63	2.70	111.15
1995 Jan-Apr	111.16	6.57	104.60	63.66	51.56	2.05	10.05	14.02	24.74	1.96	0.21	5.69	2.22	112.51
Per cent change	+1.8	+2.4	+1.7	0.0	-1.2	-22.2	+13.3	+13.6	-0.5	+14.1	-4.3	+1.0	-18.0	+1.2
1994 Feb	27.47	1.59	25.88	17.12	13.75	0.98	2.39	2.93	5.47	0.32	0.05	1.31	0.72	27.90
Mar	31.12	1.80	29.31	17.92	14.85	0.55	2.53	3.54	7.21	0.59	0.06	1.66	0.85	31.83
Apr	23.46	1.42	22.05	13.00	10.84	0.43	1.74	2.77	5.76	0.45	0.06	1.34	0.47	23.86
Total	82.06	4.81	77.25	48.04	39.43	1.96	6.66	9.25	18.43	1.36	0.17	4.30	2.05	83.60
1995 Feb	27.33	1.60	25.73	15.85	12.82	0.53	2.49	3.52	5.80	0.51	0.06	1.33	0.55r	27.61r
Mar	32.61	1.94	30.67	19.37	15.64	0.60	3.13	3.77	6.95	0.53	0.05	1.70r	0.65r	33.01
Apr p	23.31	1.44	21.86	11.88	9.89	0.23	1.76	3.01	6.53	0.40	0.05	1.33	0.47	23.66
Total	83.25	4.99	78.26	47.09	38.36	1.36	7.37	10.31	19.28	1.43	0.15	4.36	1.67	84.28
Per cent change	+1.4	+3.6	+1.3	-2.0	-2.7	-30.5	+10.8	+11.5	+4.6	+5.6	-12.6	+1.4	-18.6	+0.8

1. Electricity generated by major power producers (see definitions below Table 23) and available through the grid in England and Wales and from distribution companies in Scotland and Northern Ireland. 2. Used in works and for pumping at pumped storage stations. 3. Including Slurry. 4. Mixed and dual fired including sour gas and Orimulsion. 5. Combined Cycle Gas Turbine Stations. 6. Natural flow and net supply by pumped storage stations. 7. Including diesel and oil engines, gas turbines and wind power. 8. Purchases from the UKAEA, BNF and other generators. 9. Net of supplies direct from generators to final consumers.

TABLE 20. Fuel used in electricity generation

Million tonnes of oil equivalent

	Major power producers ¹				Other generators ¹				All generating companies						
	Coal	Nuclear	Other ²	Total	Coal ³	Nuclear	Other ^{2,3}	Total	Coal	Oil	Gas	Nuclear	Hydro	Other	Total ⁴
1990	52.0	15.1	7.1	74.2	0.9	1.2	3.8	5.9	52.9	8.3	0.6	16.3	0.4	1.7	80.2
1991	51.7	16.3	6.2	74.2	1.0	1.1	4.1	6.2	52.6	7.5	0.6	17.4	0.4	1.8	80.4
1992	46.0	17.5	6.9	70.4	0.9	1.0	4.8	6.7	46.9	8.4	1.7	18.5	0.5	1.1	77.1
1993	38.3	20.2	11.0	69.5	1.3	1.3	4.3	6.9	39.5	6.1	7.6	21.5	0.4	1.2	76.3
1994 p	36.2	20.0	13.1	69.4	1.2	1.1	3.3	5.7	37.4	4.8	10.1	21.2	0.4	1.2	75.1
Per cent change	-5.4	-0.6	+19.3	-0.1	-3.6	-13.4	-22.4	-17.2	-5.3	-22.0	+32.7	-1.4	+17.8	-4.2	-1.6
1992 4th quarter	12.1	4.6	2.3	19.0	0.3	0.2	1.2	1.7	12.4	2.3	0.8	4.8	0.1	0.3	20.8
1993 1st quarter	11.7	5.5	2.3	19.6	0.3	0.3	1.2	1.8	12.1	1.7	1.3	5.8	0.1	0.3	21.4
2nd quarter	8.5	4.7	2.5	15.6	0.3	0.4	1.1	1.7	8.8	1.3	1.8	5.0	0.1	0.3	17.3
3rd quarter	7.9	4.7	2.6	15.2	0.3	0.3	1.1	1.7	8.2	1.4	2.0	4.9	0.1	0.3	16.9
4th quarter	10.1	5.3	3.6	19.1	0.3	0.4	0.9	1.7	10.5	1.6	2.6	5.7	0.1	0.3	20.7
1994 1st quarter	10.8	5.0	3.7	19.6	0.3	0.4	0.9	1.6	11.1	1.5	2.7	5.4	0.1	0.3	21.2
2nd quarter	8.1	5.1	3.0	16.1	0.3	0.2	0.9	1.5	8.4	1.3	2.2	5.3	0.1	0.3	17.5
3rd quarter	7.5	4.9	2.9	15.3	0.3	0.3	0.8	1.3	7.8	0.9	2.4	5.1	0.1	0.3	16.6
4th quarter	9.8	5.1	3.5	18.4	0.3	0.3	0.7	1.3	10.1	1.1	2.7	5.3	0.1	0.3	19.7
1995 1st quarter	11.0	4.8	3.9	19.7	0.3	0.3	0.8	1.4	11.3	1.3	3.0	5.0	0.2	0.3	21.1
Per cent change	+1.3	-4.6	+5.5	+0.6	+13.2	-36.6	-13.8	-14.4	+1.7	-14.4	+11.5	-7.0	+22.6	-13.3	-0.6

1. See definitions below Table 23. 2. Oil, including oil used in gas turbine and diesel plant or for lighting up coal fired boilers, and Orimulsion, hydro, gas, wind and refuse derived fuel. 3. The 1989 figures are largely estimated. 4. Does not include imports of electricity from France.

TABLE 21. Fuel used in electricity generation by major power producers¹

Million tonnes of oil equivalent

	Total ²	Coal ³	Oil ^{3,4}	Gas ⁵	Nuclear	Hydro
1990	74.25	51.99	6.81	0.01	15.06	0.38
1991	74.19	51.65	5.84	0.08	16.30	0.32
1992	70.43	45.97	5.36	1.19	17.50	0.39
1993	69.45	38.26	4.41	6.27	20.17	0.30
1994 p	69.38	36.21	3.58	9.07	20.04	0.37
Per cent change	-0.1	-5.4	-18.7	+44.8	-0.6	+21.4
1994 Jan-Apr	24.89	13.66	1.53	2.99	6.52	0.16
1995 Jan-Apr	24.93	13.50	1.26	3.45	6.49	0.19
Per cent change	+0.1	-1.1	-17.4	+15.3	-0.5	+15.4
1994 Feb	6.29	3.61	0.48	0.72	1.43	0.03
Mar	7.01	3.91	0.33	0.81	1.89	0.05
Apr	5.34	2.83	0.28	0.66	1.51	0.04
Total	18.63	10.35	1.10	2.20	4.84	0.13
1995 Feb	6.15	3.40	0.34	0.82	1.52	0.05
Mar	7.27	4.12	0.38	0.89	1.82	0.05
Apr p	5.26	2.53	0.18	0.79	1.71	0.04
Total	18.67	10.04	0.90	2.50	5.06	0.14
Per cent change	+0.2	-3.0	-17.6	+13.9	+4.6	+7.8

1. See definitions below Table 23. 2. Including wind power and refuse derived fuel. 3. Including quantities used in the production of steam for sale. 4. Including oil used in gas turbine and diesel plant or for lighting up coal fired boilers, and Orimulsion. 5. Including sour gas, refinery gas, etc.

TABLE 22. Availability and consumption of electricity

TWh

	Public distribution system							Other generators			All electricity suppliers		
	Electricity available	Transmission distribution and other losses ¹	Sales of electricity to consumers					Electricity available ⁵	Losses and statistical differences	Consumption of electricity ⁶	Electricity available	Losses and statistical differences	Consumption of electricity
			Total	Industrial ²	Commercial ³	Domestic	Other ⁴						
1990	295.28	23.96	271.32	98.17	70.96	93.79	8.40	14.13	1.03	13.10	309.40	24.98	284.42
1991	302.41	24.67	277.75	96.87	74.58	98.10	8.20	14.58	1.49	13.09	317.00	26.16	290.84
1992	301.40	22.97	278.43	92.84	77.89	99.48	8.22	13.76	0.74	13.02	315.16	23.71	291.45
1993	305.20	22.44	282.76	93.77	80.50	100.41	8.09	13.31	0.93	12.38	318.51	23.37	295.14
1994 p	308.65	24.14	284.51	94.44	81.55	101.07	8.45	12.60	0.57	12.03	321.25	24.71	296.54
Per cent change	+1.1	+7.6	+0.6	+0.7	+1.3	-0.3	+4.4	-5.3	-38.4	-2.8	+0.9	+5.8	+0.5
1992 4th quarter	81.99	6.36	75.63	23.09	20.81	29.35	2.38	3.75	0.23	3.52	85.74	6.60	79.15
1993 1st quarter	85.40	7.76	77.64	23.61	21.97	30.03	2.02	3.50	0.23	3.27	88.89	7.98	80.91
2nd quarter	68.79	4.34	64.45	22.85	18.35	21.55	1.70	3.23	0.27	2.97	72.02	4.60	67.42
3rd quarter	66.51	4.56	61.95	22.91	18.07	19.08	1.89	3.16	0.26	2.90	69.67	4.82	64.85
4th quarter	84.51	5.79	78.72	24.39	22.11	29.74	2.48	3.41	0.17	3.24	87.92	5.96	81.96
1994 1st quarter	87.29	7.68	79.62	24.76	21.50	31.16	2.20	3.23	0.18	3.05	90.52	7.85	82.67
2nd quarter	71.25	5.23	66.02	23.78	19.46	20.92	1.86	3.02	0.11	2.91	74.26	5.34	68.92
3rd quarter	67.70	4.70	63.00	22.09	19.30	19.69	1.93	2.90	0.08	2.82	70.60	4.78	65.82
4th quarter p	82.42	6.54	75.88	23.82	21.29	28.30	2.46	3.46	0.20	3.25	85.87	6.74	79.13
1995 1st quarter	88.85	5.07	83.78	25.59	22.40	33.22	2.57	3.39	0.24	3.15	92.24	5.31	86.93
Per cent change	+1.8	-33.9	+5.2	+3.4	+4.2	+6.6	+17.0	+5.0	+32.4	+3.3	+1.9	-32.4	+5.2

1. Losses on the grid system and local networks and other differences between data collected on sales and data collected on availability.

2. Manufacturing industry, construction, energy and water supply industries. 3. Commercial premises, transport and other service sector consumers.

4. Agriculture, public lighting and combined domestic/commercial premises. 5. Net electricity supplied less transfers to the public distribution system.

6. The majority of this consumption is by the industrial and fuel sectors (94% in 1994).

TEMPERATURES

TABLE 23. Average temperatures and deviations from the long term mean¹

Degrees Celsius

	Long term mean	Average daily temperature			Deviation from the long term mean		
	1961 to 1990	1993	1994	1995	1993	1994	1995
Statistical month²							
January	3.8	5.1	4.4	5.4	+1.3	+0.6	+1.6
February	4.0	6.0	4.5	6.3	+2.0	+0.5	+2.3
March*	5.4	5.8	6.4	5.6	+0.4	+1.0	+0.2
April	7.6	8.7	7.0	8.2	+1.1	-0.6	+0.6
May	10.2	10.6	11.1		+0.4	+0.9	
June*	13.4	13.8	12.8		+0.4	-0.6	
July	15.7	15.2	17.1		-0.5	+1.4	
August	15.9	15.1	16.8		-0.8	+0.9	
September*	14.0	13.0	13.5		-1.0	-0.5	
October	11.1	8.9	10.9		-2.2	-0.2	
November	7.6	6.9	10.2		-0.7	+2.6	
December*	4.9	4.7	7.3		-0.2	+2.4	
Year ³	9.5	9.5	10.2		—	+0.7	
Calendar month							
January	3.9	6.0	5.2	4.9	+2.1	+1.3	+1.0
February	3.9	5.4	3.5	6.7	+1.5	-0.4	+2.8
March	5.7	6.6	7.6	5.6	+0.9	+1.9	-0.1
April	7.8	9.3	8.1	8.9	+1.5	+0.3	+1.1
May	10.9	11.2	10.4		+0.3	-0.5	
June	13.9	14.4	14.3		+0.5	+0.4	
July	15.8	15.1	17.6		-0.7	+1.8	
August	15.6	14.4	16.3		-1.2	+0.7	
September	13.5	12.5	12.7		-1.0	-0.8	
October	10.6	8.5	10.2		-2.1	-0.4	
November	6.6	5.0	10.1		-1.6	+3.5	
December	4.7	5.3	6.4		+0.6	+1.7	
Year	9.5	9.5	10.2		—	+0.8	

1. Based on data provided by the Meteorological Office. Information on the methodology used is given in footnotes to Table 11 of the Digest of UK Energy Statistics 1994. 2. Months with 4 or 5 weeks. Months marked * contain 5 weeks. 3. Weighted average (based on 52 weeks).

DEFINITIONS AND ABBREVIATIONS

Electricity generators

Major power producers

— National Power, PowerGen, Nuclear Electric, National Grid Company, ScottishPower, Hydro-Electric, Scottish Nuclear, NIGEN, Coolkeeragh Power Ltd., Premier Power Ltd., Central Power, South Western Electricity, Teesside Power Ltd., Lakeland Power Ltd., Corby Power Ltd., Peterborough Power Ltd., Regional Power Ltd., Fibropower Ltd., Fibrogen Ltd., Fellside Heat and Power Ltd., Keadby Generation Ltd., Barking Power Ltd., Elm Energy & Recycling (UK) Ltd, South East London Combined Heat & power Ltd.

BCC — British Coal Corporation
 CHP — Combined heat and power
 LDF — Light distillate feedstock
 OTS — Overseas Trade Statistics of the United Kingdom
 UKAEA — United Kingdom Atomic Energy Authority

BNF — British Nuclear Fuels plc
 GDP — Gross domestic product
 NGL — Natural gas liquids
 UKCS — United Kingdom Continental Shelf
 VAT — Value added tax

FOREIGN TRADE

TABLE 24. Imports and exports of fuels and related materials¹

		Petroleum					Petroleum							Total fob ³
		Coal and other solid fuel	Crude	Products ²	Natural gas	Electricity	Total	Coal and other solid fuel	Crude	Products ²	Natural gas	Electricity	Total	
Quantity – Million tonnes of oil equivalent							Value – £ million							
IMPORTS: (cif)														
1990		10.2	47.8	25.2	7.3	1.1	91.6	630	4,033	2,427	519	225	7,834	7,418
1991		13.5	50.1	24.0	6.5	1.4	95.5	734	3,887	2,063	472	343	7,500	7,165
1992		14.2	51.3	22.3	5.5	1.4	94.7	744	3,745	1,711	397	369	6,965	6,620
1993		13.0	53.6	21.8	4.3	1.4	94.2 r	731 r	4,078 r	1,766 r	327	426	7,328 r	6,997 r
1994 p		10.8	43.6	20.2	3.0	1.5	79.1	598	3,026	1,689	231	388	5,933	5,696
Per cent change		-16.8	-18.7	-7.4	-28.4	+0.8	-16.0	-18.1	-25.8	-4.3	-29.5	-8.9	-19.0	-18.6
1993	2nd quarter	3.0	13.9	4.8	1.2	0.3	23.3	170 r	1,116 r	402 r	97	105	1,891 r	1,815 r
	3rd quarter	3.4	13.1	5.5	0.6	0.4	23.1	186	963	438 r	50	107	1,743 r	1,659 r
	4th quarter	3.4	13.6	6.2 r	1.0	0.4	24.5	194 r	926	457 r	81	118	1,776 r	1,680 r
1994	1st quarter p	3.3	11.5	5.0	1.1	0.4	21.4	186	733	382	88	86	1,475	1,379
	2nd quarter p	2.5	10.9	4.9	1.0	0.3	19.6	141	753	399	78	87	1,458	1,371
	3rd quarter p	2.7	10.0	5.3	0.4	0.4	18.9	146	744	486	32	80	1,489	1,512
	4th quarter p	2.3	11.1	5.0	0.4	0.4	19.3	126	796	422	33	135	1,512	1,435
1995	1st quarter p	2.9	10.8	4.4	0.4	0.4	18.8	148	789	347	33	169	1,485	1,435
Per cent change		-13.2	-6.8	-13.3	-61.8	-4.0	-12.2	-20.6	+7.6	-9.2	-62.0	+96.1	+0.7	+4.1
EXPORTS: (fob)														
1990		1.9	59.2	22.5	—	0.1	83.6	119	5,172	2,455	—	25	7,771	7,771
1991		1.5	56.6	25.0	—	—	83.1	97	4,370	2,640	—	—	7,107	7,107
1992		0.8	58.6	26.1	—	—	85.5	63	4,413	2,401	2	—	6,879	6,879
1993		1.0	67.0 r	30.9 r	0.6	—	99.5 r	73 r	5,147 r	3,149 r	28	—	8,397 r	8,397 r
1994 p		1.2	85.9	30.1	1.0	—	118.1	75	6,062	2,776	45	—	8,959	8,959
Per cent change		+16.4	+28.2	-2.5	+67.3	—	+18.8	+2.8	+17.8	-11.8	+61.3	—	+6.7	+6.7
1993	2nd quarter	0.2	13.9 r	7.5	0.2	—	21.8 r	16 r	1,163 r	805 r	8	—	1,992 r	1,992 r
	3rd quarter	0.2	18.1 r	8.2 r	0.2	—	26.7	14	1,392 r	804 r	7	—	2,218 r	2,218 r
	4th quarter	0.4 r	20.5 r	7.6	0.2	—	28.6 r	22 r	1,399 r	737 r	11	—	2,168 r	2,168 r
1994	1st quarter p	0.4	21.3	7.1	0.2	—	29.0	22	1,362	625	11	—	2,020	2,020
	2nd quarter p	0.2	20.4	8.2	0.3	—	29.1	17	1,485	780	10	—	2,292	2,292
	3rd quarter p	0.2	21.4	7.5	0.2	—	29.4	14	1,591	682	11	—	2,298	2,298
	4th quarter p	0.4	22.7	7.3	0.3	—	30.6	22	1,625	689	13	—	2,349	2,349
1995	1st quarter p	0.2	23.1	7.1	0.3	—	30.7	18	1,701	730	14	—	2,463	2,463
Per cent change		-42.0	+8.3	+0.1	+6.4	—	+5.6	-16.9	+24.8	+16.8	+26.1	—	+21.9	+21.9
NET EXPORTS:														
1990		-8.3	11.4	-2.7	-7.3	-1.0	-7.9	-511	1,139	28	-519	-200	-63	353
1991		-12.0	6.5	1.0	-6.5	-1.4	-12.4	-637	483	577	-472	-343	-393	-58
1992		-13.4	7.3	3.8	-5.5	-1.4	-9.2	-681	668	690	-395	-369	-87	258
1993		-12.0	13.4 r	9.1 r	-3.7	-1.4	5.3 r	-658 r	1,069 r	1,383 r	-299	-426	1,069 r	1,400 r
1994 p		-9.7	42.3	9.9	-2.1	-1.5	39.0	-523	3,036	1,087	-185	-388	3,026	3,263
1993	2nd quarter	-2.8	0.0 r	2.8	-1.1	-0.3	-1.4	-154 r	47 r	403 r	-89	-105	101 r	177 r
	3rd quarter	-3.2	5.0 r	2.6	-0.5	-0.4	3.6 r	-172 r	430 r	367 r	-43	-107	475 r	559 r
	4th quarter	-3.0	7.0 r	1.4	-0.9	-0.4	4.1 r	-173 r	473 r	280 r	-70	-118	393 r	489 r
1994	1st quarter p	-2.9	9.8	2.1	-0.9	-0.4	7.6	-164	629	243	-77	-86	545	641
	2nd quarter p	-2.2	9.5	3.3	-0.8	-0.3	9.5	-124	732	381	-68	-87	834	921
	3rd quarter p	-2.5	11.4	2.2	-0.2	-0.4	10.5	-132	846	196	-21	-80	809	786
	4th quarter p	-2.0	11.6	2.3	-0.1	-0.4	11.4	-104	829	267	-20	-135	837	914
1995	1st quarter p	-2.7	12.3	2.7	-0.2	-0.4	11.9	-129	912	383	-20	-169	977	1,027

1. The figures generally correspond to those published under SITC section 3 of the OTS. They do however include some unpublished revisions and additional amendments. The quantity figures differ from those in Table 3, which are partly based on other sources of information. 2. SITC divisions 334, 335, 342, 344, plus Orimulsion from division 278. 3. 'Free on board' – imports adjusted to exclude estimated costs of insurance, freight etc.

PRICES

TABLE 25 Prices of fuels purchased by manufacturing industry in Great Britain¹

Fuel	Size of consumer	1992		1993				1994			1995
		4th quarter	1st quarter	2nd quarter	3rd quarter	4th quarter	1st quarter	2nd quarter	3rd quarter	4th quarter	1st quarter p
COAL (£ per GJ)	Small	2.55	2.53	2.53	2.55	2.42	2.38	2.34	2.29	2.31 r	2.14
	Medium	2.05	2.06	2.15	2.10	2.08	2.02	2.07	2.09	2.05	1.93
	Large	1.51	1.42	1.37	1.38	1.40	1.42	1.35	1.40	1.36 r	1.33
	All consumers — average	1.60	1.52	1.49	1.49	1.51	1.51	1.46	1.50	1.46 r	1.42
	— 10% decile ²	1.54	1.59	1.57	1.47	1.53	1.45	1.49	1.44	1.56 r	1.34
	— median ²	2.45	2.38	2.44	2.41	2.28	2.13	2.28	2.21	2.09 r	2.12
	— 90% decile ²	2.81	2.77	2.76	2.77	2.74	2.66	2.69	2.69	2.75 r	2.76
HEAVY FUEL OIL (£ per tonne) ³	Small	85.3	83.3	82.3	71.6	72.0	75.4	77.4	79.3	87.1 r	96.3
	Medium	75.3	72.4	71.2	65.4	66.6	70.8	75.3	78.3	81.1	94.1
	Large	72.3	68.2	69.1	64.1	63.2	68.0	70.3	73.8	78.2 r	88.2
	Of which:										
	Extra large	72.2	67.7	68.7	64.1	62.7	67.9	67.8	71.5	77.1 r	86.7
	Moderately large	72.5	69.2	69.8	64.2	64.2	68.2	74.9	78.1	80.1 r	90.8
	All consumers — average	75.0	71.7	71.6	65.5	65.6	69.9	73.0	76.1	80.3 r	91.3
	— 10% decile ²	69.3	66.5	65.5	60.7	61.3	64.3	68.4	70.4	74.3 r	85.0
	— median ²	80.2	73.4	73.1	66.5	66.8	72.6	76.0	79.2	84.9	96.3
	— 90% decile ²	96.6	88.9	88.3	80.0	82.8	90.1	85.8	88.0	95.0	105.6
GAS OIL (£ per tonne) ³	Small	158.3	160.4	160.7	154.3	158.5	154.3	154.2	159.4	154.1 r	154.2
	Medium	148.5	156.5	152.1	144.9	150.6	143.5	143.3	142.3	144.7 r	142.8
	Large	141.5	140.5	142.7	136.8	137.1	128.1	128.1	127.7	127.1 r	129.2
	All consumers — average	143.0	143.4	144.5	138.5	139.7	131.1	131.0	130.7	130.4 r	131.9
	— 10% decile ²	134.0	136.3	132.0	130.5	133.4	125.4	126.8	125.4	124.0	127.7
	— median ²	149.8	152.1	150.9	143.5	148.9	140.7	140.5	137.7	140.4	140.6
	— 90% decile ²	173.5	176.1	178.0	166.8	171.8	166.7	163.4	164.0	165.4 r	161.3
ELECTRICITY (Pence per kWh)	Small	7.54	7.41	6.24	6.18	7.36	7.16	6.26	6.26	6.51 r	6.53
	Medium	5.08	5.24	4.68	4.72	4.96	4.82	4.55	4.52	4.95	5.03
	Large	3.86	3.92	3.67	3.73	3.90	3.94	3.65	3.56	3.87 r	3.93
	Of which:										
	Extra large	3.55	3.60	3.27	3.41	3.54	3.61	3.31	3.16	3.59 r	3.56
	Moderately large	4.11	4.18	3.98	3.98	4.19	4.19	3.90	3.87	4.08 r	4.22
	All consumers — average	4.38	4.46	4.07	4.13	4.37	4.35	4.03	3.96	4.29 r	4.36
	— 10% decile ²	4.40	4.39	4.26	4.24	4.35	4.21	4.20	4.18	4.39 r	4.40
	— median ²	7.08	7.05	5.80	5.79	6.61	6.42	5.74	5.80	6.13	6.15
	— 90% decile ²	8.83	8.72	7.54	7.75	8.65	8.68	7.68	7.47	8.10 r	8.52
GAS (Pence per kWh) ⁴	Small	1.359	1.281	1.242	1.329	1.293	1.221	1.288	1.264	1.167 r	1.183
	Medium	0.962	0.961	0.980	0.983	0.967	0.952	0.931	0.960	0.918 r	0.944
	Large	0.701	0.724	0.706	0.708	0.711	0.752	0.722	0.736	0.741 r	0.758
	All consumers — average	0.759	0.789	0.760	0.746	0.771	0.805	0.768	0.759	0.777 r	0.804
	— Firm ⁵	0.947	0.959	0.927	0.882	0.935	0.941	0.897	0.853	0.862 r	0.894
	— Interruptible ⁵	0.627	0.642	0.637	0.650	0.635	0.647	0.657	0.684	0.681 r	0.687
	— Tariff ⁵	1.420	1.403	1.394	1.380	1.368	1.360	1.414	1.397	1.344 r	1.338
	— 10% decile ²	0.851	0.891	0.894	0.864	0.882	0.866	0.866	0.860	0.850	0.853
	— median ²	1.379	1.357	1.321	1.363	1.298	1.281	1.196	1.138	1.144 r	1.105
	— 90% decile ²	1.542	1.514	1.515	1.600	1.513	1.499	1.507	1.513	1.486 r	1.477
MEDIUM FUEL OIL (£ per tonne) ³	All consumers — average ⁶	81.0	78.7	79.7	77.6	79.2	81.6	83.1	85.7	87.7 r	101.4
LIQUEFIED PETROLEUM GASES (£ per tonne)	All consumers — average ⁶	155.5	161.7	158.3	153.5	141.2	143.5	133.8	139.4	141.0	147.4
HARD COKE (£ per tonne) ⁷	All consumers — average ⁶	113.0	117.6	117.0	117.6	116.5	114.9	106.9	93.8	89.0 r	105.2

Realised in new and renewed contracts

HEAVY FUEL OIL (£ per tonne) ^{3,8}	76.8	70.2	70.9	64.5	65.6	67.3	79.4	76.3	87.2	93.0
GAS OIL (£ per tonne) ^{3,8}	147.0	147.9	145.4	141.8	141.7	129.4	131.5	129.8	129.1	130.8

1. Average prices paid (exclusive of VAT) by respondents to a Department of Trade and Industry survey of some 1,200 manufacturing sites. The average price for each size of consumer is obtained by dividing the total quantity of purchases, for each fuel, into their total value. Prices vary widely around the average values shown (see footnote 2). Purchases of fuels used as raw materials in manufacturing are excluded. For further details, see the annual "Digest of United Kingdom Energy Statistics" (HMSO). 2. The 10% decile is the point within the complete range of prices below which the bottom 10% of those prices fall. Similarly the 90% decile is the point above which the top 10% of the prices occur. The median is the midway point. Thus, these values show the spread of prices paid. The deciles and the median are calculated by giving equal 'weight' to each purchaser, whereas the average prices, for each size-band and all consumers are given 'weight' according to the quantity purchased. 3. Oil product prices include hydrocarbon oil duty. From the first quarter of 1995 the rates per tonne are £16.70 for Heavy Fuel Oil, £17.15 for Medium Fuel Oil and £25.08 for Gas Oil. 4. Covers all supplies of natural gas including, for example, those purchased direct from onshore/offshore gas fields. Respondents purchasing more than one type of supply (tariff, firm contract and interruptible contract) are treated as separate entities in respect of each type of supply. 5. Prices by type of supply cover consumers of all sizes. 6. No further details of prices can be given owing to the small number of respondents purchasing this fuel. 7. Excludes breeze and blast furnace supplies. 8. Derived from prices reported by nine main oil marketing companies and relate to average prices (excluding VAT) realised on medium sized new contracts or contracts renewed at a changed price.

Note on sizebands used in Table 25

For coal, heavy fuel oil, gas oil, electricity and gas prices are shown in table 25 for various sizes of consumers. These sizebands are defined in terms of the approximate annual purchases by the consumers within them. These are shown below.

Fuel	Range of annual purchases				Medium	Small
	Large	of which:		Moderately large		
	Greater than	Extra large	Greater than			Less than
Coal (tonnes)	7,600		n/a	n/a	760 to 7,600	760
Heavy fuel oil (tonnes)	4,900		15,000	4,900 to 15,000	490 to 4,900	490
Gas oil (tonnes)	175		n/a	n/a	35 to 175	35
Electricity (thousand kWh)	8,800		150,000	8,800 to 150,000	880 to 8,800	880
Gas* (thousand kWh)	8,800		n/a	n/a	1,500 to 8,800	1,500

* Respondents purchasing more than one type of supply (tariff, firm contract and interruptible contract) are treated as separate entities in respect of each type of supply.

TABLE 26. Average prices of fuels purchased by the major UK power producers¹ and by British Gas

	Major power producers ¹			British Gas	
	Coal ²	Oil ^{3,4}	Natural Gas ⁵	Natural gas ⁶	
	£ per tonne	£ per tonne	pence per kWh	pence per kWh	
1990	43.77	53.49	..	0.575	1990/91
1991	43.47	56.62	..	0.595	1991
1992	45.52	57.76	..	0.590	1992
1993	42.44	55.90	0.703	0.600	1993
1994 p	36.35	67.87	0.667	0.618	1994 p
1992 2nd quarter	45.14	55.92	..	0.579	
3rd quarter	46.32	54.35	..	0.579	
4th quarter	46.05	64.96	..	0.619	
1993 1st quarter	45.97	62.33	0.764	0.600	
2nd quarter	40.94	57.15	0.632	0.600	
3rd quarter	40.46	52.90	0.631	0.600	
4th quarter	39.53	52.08	0.883	0.600	
1994 1st quarter	33.98	62.60	0.679	0.600	
2nd quarter	38.92	65.04	0.642	0.624	
3rd quarter	38.10	72.14	0.678	0.624	
4th quarter	34.29	71.32	0.666	0.624	
1994 1st quarter p	32.94	86.76	0.670	0.624	

1. See definitions below Table 23. 2. Includes slurry. 3. Includes oil for burning, for gas turbines and for internal combustion engines (other than for use in road vehicles). Excludes any natural gas liquids burnt at Peterhead power station. 4. Includes hydrocarbon oil duty. 5. Prior to 1993 gas prices are not available for reasons of confidentiality. 6. Quarterly figures and the 1994 annual figure are estimates. Prior to 1991 annual figures are for financial years to 31 March. The prices exclude the Government's levy on indigenous supplies. Including the levy, the average prices, converted to pence per kWh, were as follows:

	pence per kWh
1989/90	0.589
1990/91	0.621
1991	0.641
1992	0.639
1993	0.641
1994 p	0.663

TABLE 27. Fuel price indices for the industrial sector¹

1990=100

	Unadjusted					Seasonally adjusted			
	Coal ²	Heavy fuel oil ²	Gas ³	Electricity ³	Total fuel	Gas ³	Electricity ³	Total fuel	
Current fuel price index numbers									
1990	100.0	100.0	100.0	100.0	100.0				
1991	98.5	87.8	101.0	103.3	100.4				
1992	99.7	84.5	104.5	109.1	104.2				
1993	93.6	90.0	99.2	114.2 r	106.9 r				
1994	92.5 r	97.7 r	95.0	111.6 r	105.5 r				
Per cent change	-1.2 r	+8.5 r	-4.2	-2.3 r	-1.3 r				
1993 3rd quarter	93.0	86.1	93.9	107.6	101.2	100.5 r	114.2 r	106.6 r	
4th quarter	94.0	86.1	100.1	119.6 r	109.9 r	99.0 r	113.0 r	105.6 r	
1994 1st quarter	94.2	92.1	102.3	117.3 r	109.7 r	96.3 r	112.5 r	105.6 r	
2nd quarter	90.7	96.0	95.2	106.6 r	102.1 r	96.1 r	111.3 r	105.3 r	
3rd quarter	93.5	100.2	90.0	105.0 r	100.9 r	96.1 r	111.4 r	106.0 r	
4th quarter	91.1 r	105.7 r	92.6	116.0 r	108.9 r	91.4 r	109.8 r	104.8 r	
1995 1st quarter p	88.6	120.2	94.8	118.2	112.6	89.4	113.3	108.5	
Per cent change	-6.0	+30.6	-7.4	+0.8	+2.6	-7.2	+0.7	+2.7	
Fuel price index numbers relative to the GDP deflator									
	GDP deflator ⁴								
1990	100.0	100.0	100.0	100.0	100.0			100.0	
1991	92.5	82.5	94.8	97.0	94.3			106.5	
1992	89.8	76.0	94.0	98.2	93.8			111.1	
1993	81.6	78.4	86.4	99.5 r	93.2 r			114.8	
1994	79.0 r	83.4 r	81.2	95.3 r	90.1 r			117.1	
Per cent change	-3.1 r	+6.3 r	-6.1 r	-4.3 r	-3.3 r			+2.0	
1993 3rd quarter	80.8	74.8	81.6	93.5	87.9	87.3 r	99.2 r	92.6 r	115.1
4th quarter	81.0	74.2	86.3	103.1 r	94.7 r	85.4 r	97.4 r	91.0 r	116.0
1994 1st quarter	80.7	78.9	87.7	100.5 r	94.0 r	82.5 r	96.4 r	90.5 r	116.7
2nd quarter	77.8	82.4	81.7	91.4 r	87.6 r	82.5	95.5 r	90.3 r	116.6
3rd quarter	79.8	85.5	76.8	89.7 r	86.1 r	82.1 r	95.1 r	90.5 r	117.1
4th quarter	77.1 r	89.5 r	78.3	98.2 r	92.1 r	77.4 r	92.9 r	88.7 r	118.2
1995 1st quarter p	74.8	101.4	80.0	99.7	95.0	75.4	95.6	91.6	118.5
Per cent change	-7.4	+28.6	-8.8	-0.8	+1.0	-8.6	-0.8	+1.2	+1.5

1. Index numbers shown represent the average for the period specified. VAT is excluded. 2. Indices based on a survey of the prices of fuels delivered to industrial consumers in Great Britain only as shown in Table 25. 3. Indices based on the average unit value of sales to industrial consumers. 4. GDP deflator at market prices and seasonally adjusted.

TABLE 28. Fuel price indices for the domestic sector^{1 2}

1990=100

	Coal and coke	Gas	Electricity	Heating oils ³	Fuel and light	Petrol and oil	Fuel, light, petrol and oil	
Current fuel price index numbers								
1990	100.0	100.0	100.0	100.0	100.0	100.0	100.0	
1991	106.4	106.9	110.1	96.2	107.9	107.5	107.7	
1992	110.5	106.7	115.8	84.6	110.2	110.5	110.3	
1993	111.0	102.6	115.4	89.9	108.9	119.3	113.4	
1994	118.2	108.8	119.2	90.0	113.7	124.8	118.7	
Per cent change	+6.4	+6.0	+3.3	+0.1	+4.5	+4.6	+4.7	
1993 3rd quarter	108.8	102.7	114.6	87.2	108.3	120.6	113.6	
4th quarter	113.3	102.6	114.5	89.6	108.5	120.8	113.8	
1994 1st quarter	113.8	102.6	113.3	86.1	107.8	122.8	114.6	
2nd quarter	119.2	110.8	121.0	92.5	115.6	124.1	119.4	
3rd quarter	118.1	110.8	121.6	91.1	115.7	126.4	120.5	
4th quarter	121.8	110.8	121.0	90.3	115.5	125.7	120.1	
1995 1st quarter	122.1	111.8	121.0	89.3	115.9	129.8	122.2	
Per cent change	+7.3	+9.0	+6.8	+3.7	+7.5	+5.7	+6.6	
Fuel price index numbers relative to the GDP deflator								GDP deflator⁴
1990	100.0	100.0	100.0	100.0	100.0	100.0	100.0	100.0
1991	99.9	100.4	103.3	90.3	101.3	100.9	101.2	106.5
1992	99.5	96.1	104.2	76.2	99.2	99.4	99.3	111.1
1993	96.7	89.4	100.5	78.3	94.8	103.9	98.8	114.8
1994	100.9	92.9	101.8	76.9	97.1	106.6	101.4	117.1
Per cent change	+4.4	+4.0	+1.3	-1.8	+2.4	+2.5	+2.7	+2.0
1993 3rd quarter	94.5	89.2	99.6	75.8	94.1	104.8	98.7	115.1
4th quarter	97.7	88.5	98.7	77.2	93.5	104.1	98.1	116.0
1994 1st quarter	97.5	87.9	97.1	73.8	92.4	105.2	98.2	116.7
2nd quarter	102.2	95.0	103.8	79.3	99.1	106.4	102.4	116.6
3rd quarter	100.9	94.6	103.8 r	77.8	98.8	107.9	102.9	117.1
4th quarter	103.1	93.7	102.4	76.4	97.7	106.4	101.6	118.2
1995 1st quarter	103.0 r	94.4 r	102.1 r	75.4 r	97.8 r	109.5 r	103.1 r	118.5 r
Per cent change	+5.7 r	+7.3 r	+5.2 r	+2.1 r	+5.9 r	+4.1 r	+5.0 r	+1.5 r

1. Index numbers shown represent the average for the period specified. 2. Figures from the 2nd quarter of 1994 for Coal and Coke, Gas, Electricity and Heating Oils include VAT at 8 per cent. 3. Bottled gas and oil fuel. 4. GDP deflator (market prices, seasonally adjusted).

TABLE 29. Typical retail prices of petroleum products and a crude oil price index

		Motor spirit ¹			Derv ¹	Standard grade burning oil ^{1 2}	Gas oil ^{1 3}	Crude oil acquired by refineries ⁴
		4 star	Super unleaded	Premium unleaded				
Pence per litre								1990 = 100
1989	January	37.14	..	36.02	34.17	11.41	11.15	72.6
1990	January	40.92	..	38.37	39.21	15.45	15.46	95.6
1991	January	45.13	44.38	42.14	43.31	17.52	17.13	109.5
1992	January	46.93	45.57	43.43	43.19	12.47	12.02	79.7
1993	January	51.27	49.76	47.13	47.05	14.10	13.52	98.7
1993	Dec	55.78	54.76	50.79	51.61	13.35	13.14	77.0
1994	Jan	55.50	54.48	50.83	51.72	12.94	12.72	72.0
	Feb	55.91	54.60	50.52	51.03	12.87	12.65	70.0
	Mar	55.73	54.33	50.35	50.62	12.63	12.37	69.5
	Apr	56.40	55.18	51.21	51.38	13.64	13.63	77.3
	May	56.72	55.69	51.32	51.51	13.62	13.72	82.0
	June	57.18	56.26	51.84	51.54	13.19	13.30	84.5
	July	56.94	56.20	51.42	51.38	13.41	13.25	88.5
	Aug	58.35	57.65	52.95	52.10	13.51	13.32	85.6
	Sep	57.68	57.31	52.67	51.88	13.53	13.14	81.6
	Oct	57.35	56.70	51.92	51.33	13.63	13.27	83.8
	Nov	56.41	55.78	51.11	50.84	13.73	13.71	88.4
	Dec	58.32	57.57	52.79	53.04	13.68	14.10	82.5
1995	Jan	59.48	58.58	53.91	54.25	13.32	13.93	83.7
	Feb	58.92	57.99	53.25	53.65	13.60	13.80	86.3
	Mar	59.30	58.31	53.61	53.97	13.70	13.77	85.5
	Apr p	60.48	59.38	54.53	54.85	13.89	14.14	90.3

1. These approximate estimates are generally representative of prices paid on or about the 15th of the month. Estimates are based on information provided by oil marketing companies. The January 1989 price for unleaded motor spirit is based on information from fewer companies and is therefore less reliable than the other estimates given. 2. These estimates are for deliveries of up to 1,000 litres; such deliveries attract 8% VAT from 1 April 1994. 3. These estimates are for deliveries of 2,000 to 5,000 litres; such deliveries attract 8% VAT from 1 April 1994. 4. Price index for supplies received by refineries in the UK from both indigenous and imported sources. It represents the average for the month calculated in sterling on a cif basis.

STANDARD CONVERSION FACTORS AND APPROXIMATE EQUIVALENTS¹

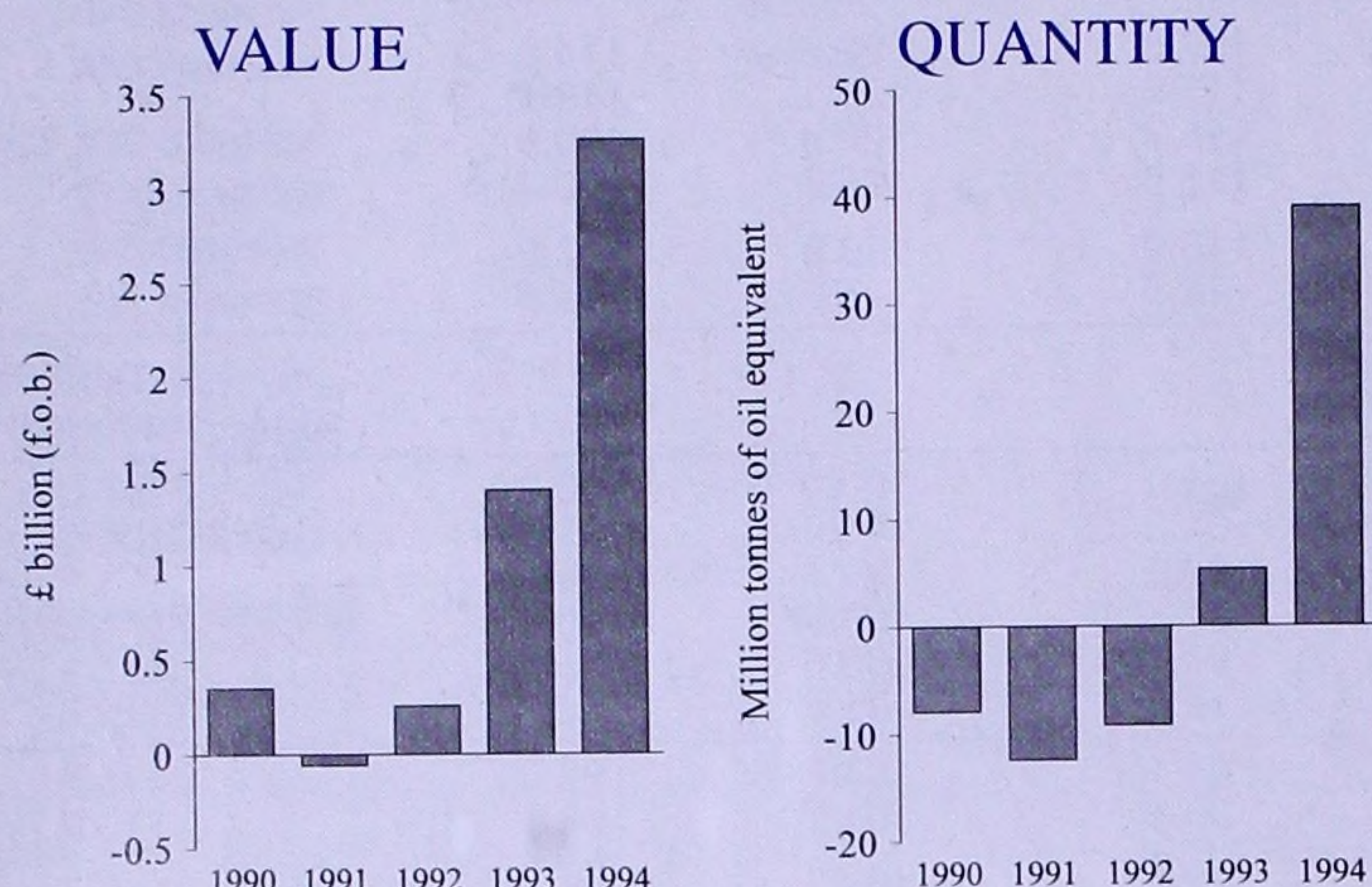
1 tonne of oil equivalent	= 397 therms	1 kilowatt (kW)	= 1,000 watts
	= 11,630 kWh	1 megawatt (MW)	= 1,000 kilowatts
1 therm	= 29.3071 kilowatt hours (kWh)	1 gigawatt (GW)	= 1,000 megawatts
1 gigajoule (GJ)	= 9.4781 therms	1 terawatt (TW)	= 1,000 gigawatts
1 tonne of UK crude oil	= 7.55 barrels	1 petawatt (PW)	= 1,000 terawatts
1 gallon (UK)	= 4.54609 litres		

1. More detailed information on conversion factors, approximate equivalents and calorific values of fuels is given on pages 137 to 140 of the Digest of UK Energy Statistics 1994.

Foreign trade in fuels in 1994

This supplement presents provisional data for the UK's imports and exports of fuels during 1994. The detailed figures are given in Table 24 of *Energy Trends* and are largely based on data collected by HM Customs and Excise and published in the *Overseas Trade Statistics*. Further details will be published in the 1995 issue of the *Digest of UK Energy Statistics* on 27 July 1995.

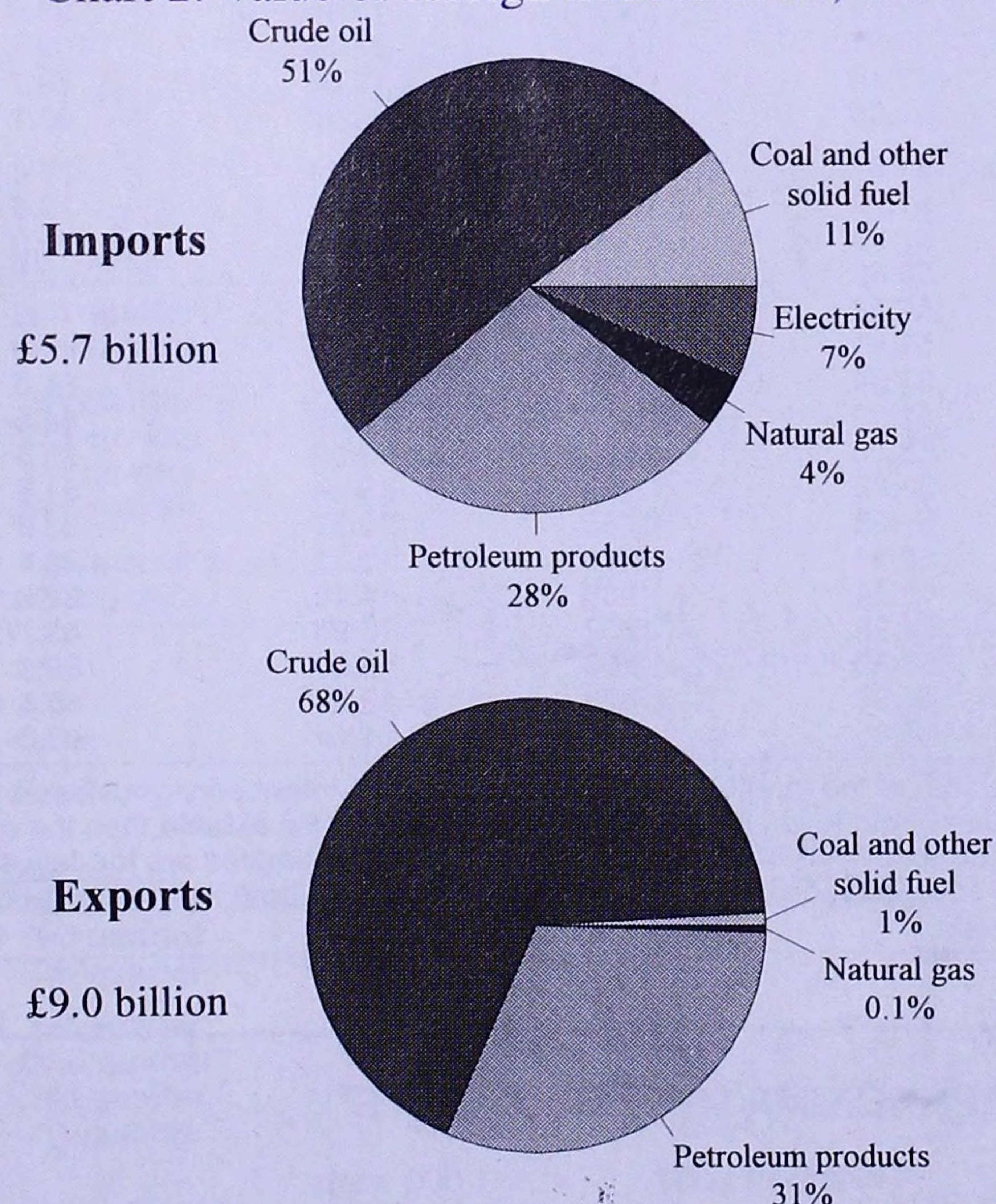
Chart 1: Net exports of fuels, 1990 to 1994



Trends in the trade balance in fuels

Chart 1 illustrates the recent trends in the balance of trade in fuels. In 1994 the UK was a net exporter of fuels, in financial terms, with a surplus on a balance of payments basis (f.o.b.) worth £3¼ billion, nearly £2 billion higher than in 1993. This is the third rise since 1991, when safety work in the North Sea reduced oil production and led to the only deficit in value terms since 1980. In volume terms, when expressed in terms of the energy content of the fuels, the UK was also a net exporter in 1994, with net exports amounting to 39 million tonnes of oil equivalent.

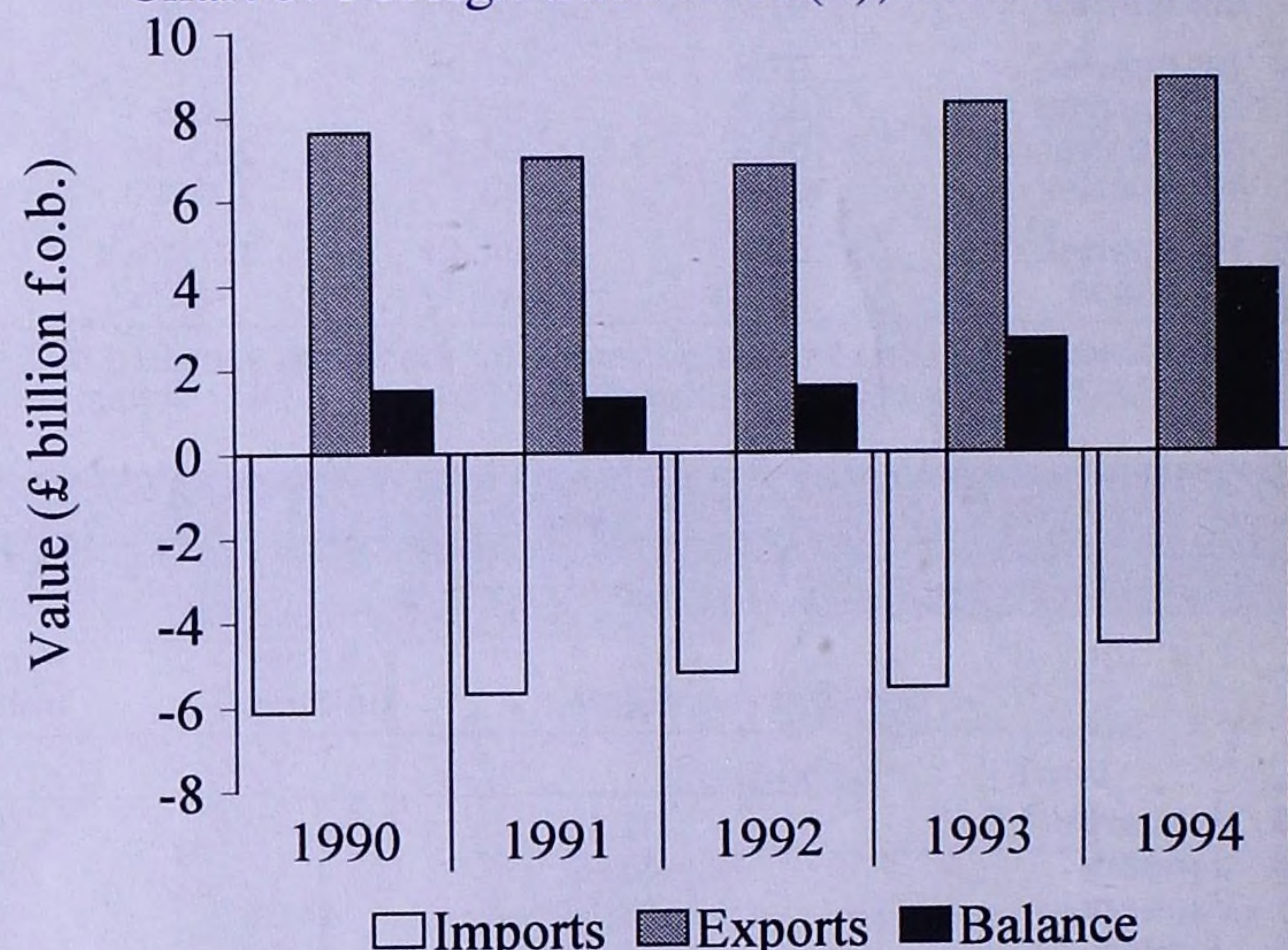
Chart 2: Value of foreign trade in fuels, 1994



Foreign trade in crude oil and petroleum products

As can be seen in Chart 2 the UK's foreign trade in fuels is dominated by trade in crude oil and petroleum products. Together these accounted for 80 per cent of imports and 99 per cent of exports in value terms in 1994. The gradual improvement in the overall balance of trade in oil since 1991 is illustrated in Chart 3. The rise in exports and the fall in imports in 1994 compared with 1993 reflects a sharp increase in North Sea production, as the industry continues to recover from the Piper Alpha accident in 1988 and the subsequent safety work. Net exports of crude oil in 1994 were worth about £3.1 billion on a balance of payments basis, compared with £1.2 billion in 1993. In contrast, net exports of petroleum products, at £1.2 billion, were £0.3 billion lower than in 1993. This was largely due to a fall in export unit values, with an increased proportion of exports in 1994 consisting of lower valued products such as partly processed oils. The fire at Texaco's Pembroke refinery in July 1994 contributed to these developments, reducing net exports of petroleum products and increasing net exports of crude oil.

Chart 3: Foreign trade in oil(1), 1990 to 1994



(1) Crude oil and petroleum products

Foreign trade in other fuels

The value of coal imported into the UK fell by 17 per cent in 1994 compared with 1993. This was largely the result of a reduction in imports of steam coal by electricity generators, who chose to run down their coal stocks. In value terms in 1994 52 per cent of the UK's coal imports were of coking coal, which is in short supply in the UK, and in this case imports were only a little lower than in 1993.

Electricity is imported into the UK from France via an interconnector beneath the English Channel. The quantity of imports has been relatively stable over the last 4 years, although the value fell by 9 per cent between 1993 and 1994 as unit costs fell back.

The UK imports natural gas from Norway via a pipeline from the Frigg Field. Amounts have fallen steadily since their peak in 1985 with the decline of the Frigg Field. Since 1992 the UK has exported relatively small amounts of natural gas from the Markham field to the Netherlands. Overall the UK is currently close to being self-sufficient in natural gas.

Contact: Mike Cornish, Statistician
tel 0171 238 3590

Enquiries about the data in, or subscriptions to, this bulletin should be addressed to: EPA4, (attention: Jane Rees-Davies) Room 3.3.18, Department of Trade & Industry, 1 Palace Street, London SW1E 5HE (tel: 0171-238 3606). Suggestions about changes to the content or scope of the bulletin should be sent to the same address, (attention: Mike Ward).

© Crown Copyright. Reproduction of information contained herein is prohibited without prior written permission. The Department of Trade & Industry reserves the right to alter or discontinue the text of or any table in this bulletin without further notice.