

ENERGY Trends



A Statistical Bulletin from the
Department of Trade & Industry

JULY 1995

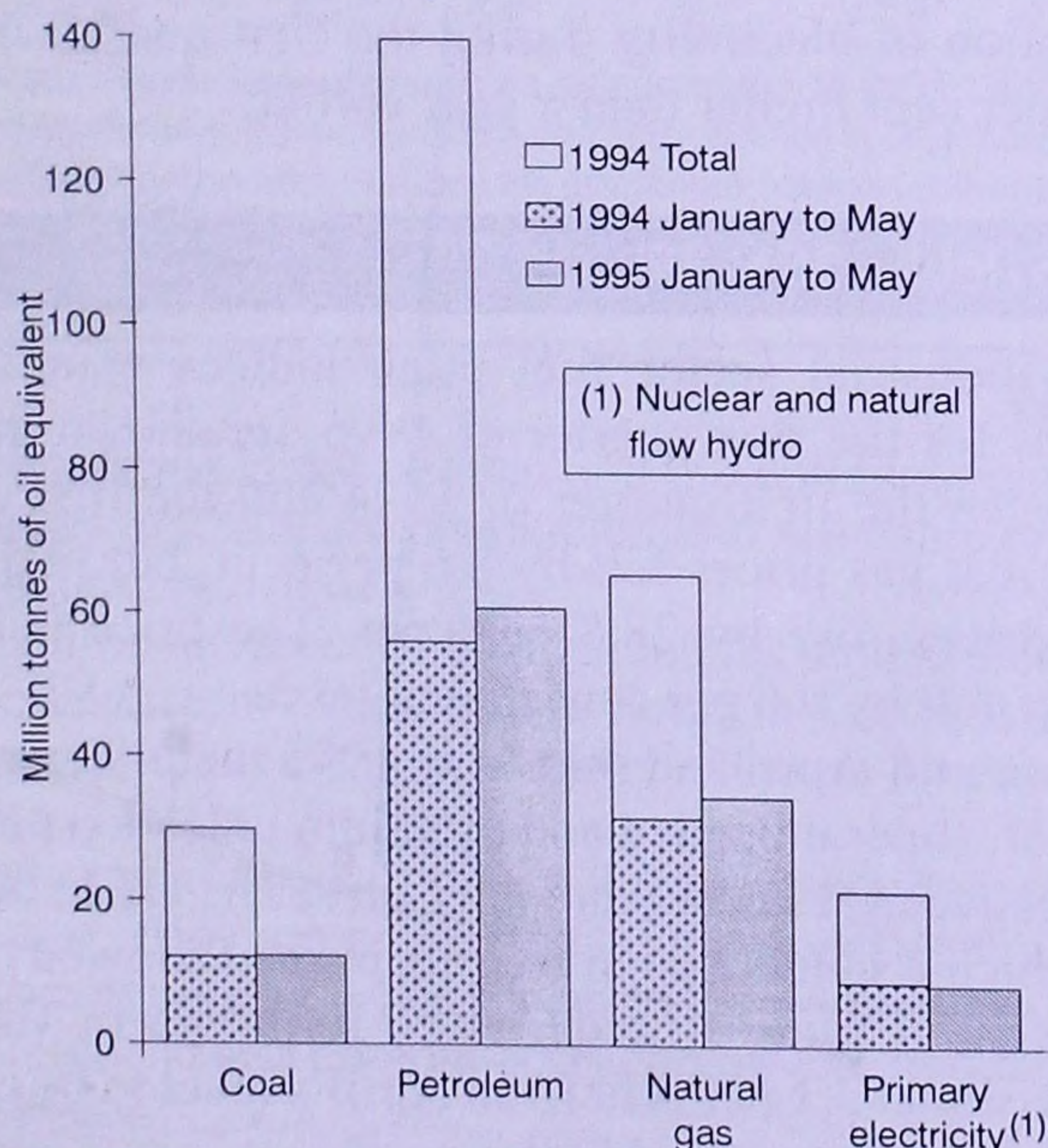
MAIN POINTS

- ★ Energy production was 7 per cent higher in the three months to May 1995 compared with a year ago, with natural gas, oil and coal production 11, 7 and 7 per cent higher respectively.
- ★ Total primary energy consumption in the three months to May 1995, after temperature correction and seasonal adjustment, was one per cent higher than a year earlier.
- ★ The number of offshore development wells drilled was 29 per cent higher in the first half of 1995, following the record number of development wells in 1994. The number of exploration and appraisal wells drilled also increased and was 17 per cent higher than a year ago.
- ★ The back page of this issue carries an article on renewable energy statistics for the United Kingdom.

TOTAL ENERGY PRODUCTION (Table 1)

Indigenous production of the primary fuels during the three months March to May 1995 at 69.0 million tonnes of oil equivalent, was 7.4 per cent more than in the correspond-

Chart 1 : Production of indigenous primary fuels in 1994 and 1995

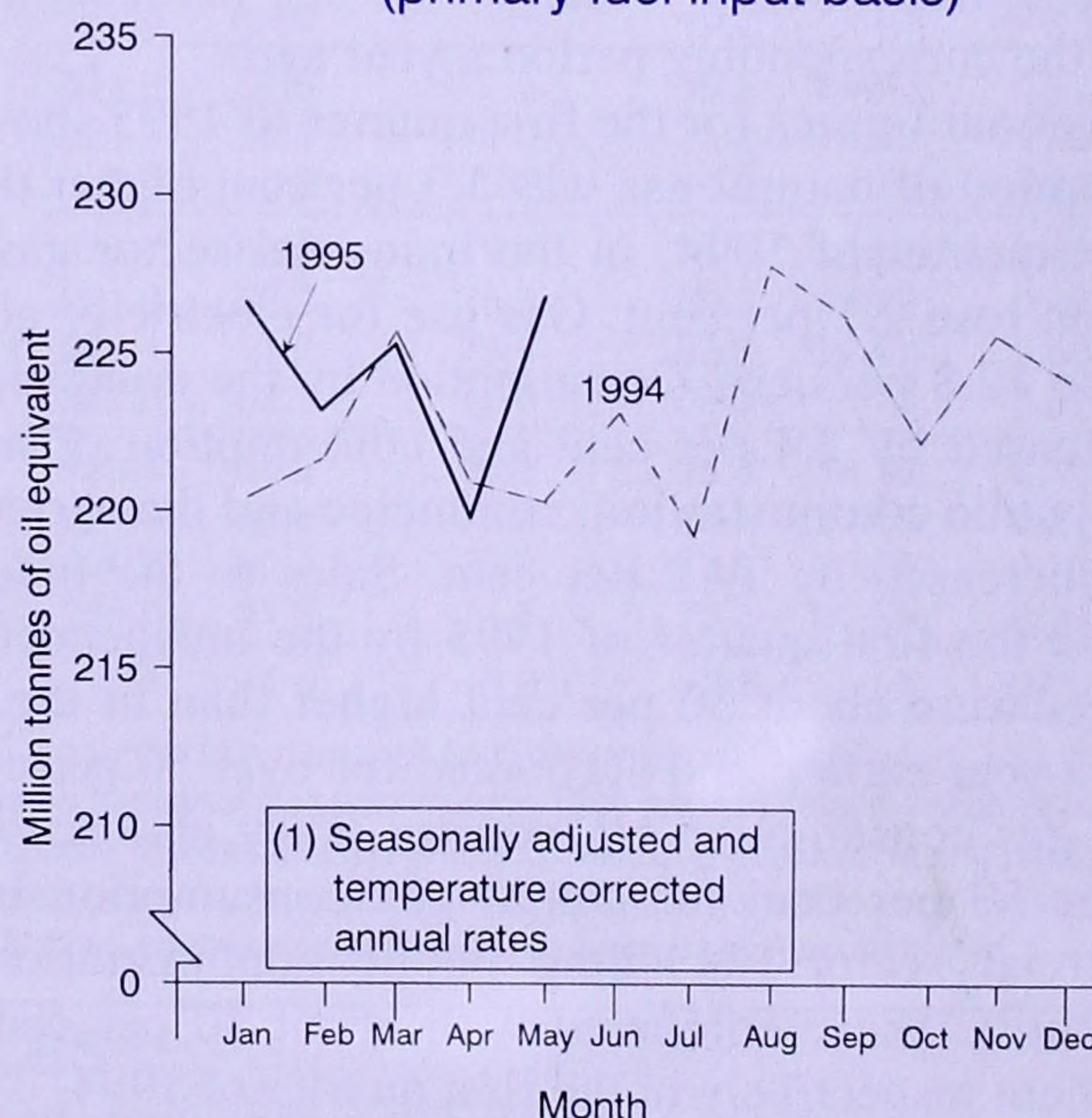


ing period a year ago. Production of coal, natural gas and petroleum (including NGLs) rose by 7.4 per cent, 11.5 per cent and 16.9 per cent respectively, compared with the same period a year earlier. Nuclear electricity fell by 1.6 per cent.

TOTAL ENERGY CONSUMPTION (Table 2)

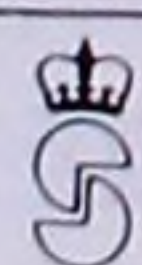
Total inland energy consumption, on a primary fuel input basis, in the three month period March to May 1995 was 56.4 million tonnes of oil, 0.7 per cent more than in the corresponding months a year ago. Consumption of petroleum and nuclear electricity fell by 4.1 per cent and 1.6 per cent respectively, whilst natural gas consumption rose by 7.4 per cent. Coal consumption remained broadly unchanged.

Chart 2 : Total inland consumption (primary fuel input basis) ⁽¹⁾



The average temperature during the period was the same as a year ago, and total energy consumption, on a seasonally adjusted and temperature corrected basis, in the three months period March to May 1995 was also 0.7 per cent higher than in the same period a year earlier. On this basis, consumption of natural gas rose by 7.8 per cent, whilst coal and petroleum consumption fell by 1.0 per cent and 3.6 per cent respectively. Nuclear electricity consumption fell by 1.3 per cent.

Continued on next page



ENERGY CONSUMPTION BY FINAL USERS (Tables 3)

Due to a problem with the computer systems it has not been possible to add the data for the first quarter of 1995. It is hoped to present the data in the August issue. There have, however, been a significant number of revisions made to the annual and quarterly data for 1993 and 1994, following the publication of the 1995 Digest of United Kingdom Energy Statistics.

COAL & OTHER SOLID FUELS (Tables 4 to 7)

Provisional figures for the three months March to May 1995 show that production was 13.2 million tonnes, 7.4 per cent higher than in the same period a year ago. Use of home produced and imported coal in the period from March to May was 20.8 million tonnes, 1.3 per cent lower than in the same months a year earlier. Consumption by electricity generators fell by 0.5 per cent whilst disposals to the domestic sector fell by 13.7 per cent. Total coal stocks at the end of May 1995 remained at 19.1 million tonnes, 17.2 million tonnes lower than at the end of May 1994.

GAS (Tables 8 and 9)

Provisional data for the three month period to May 1995 show that gross production was 8.7 per cent higher than in the corresponding period a year earlier. Exports to Europe from the Markham field were 2,544 gigawatt hours in the period March to May 1995, reducing the UK's net imports of natural gas by 63.7 per cent. Imported supplies were 66.8 per cent lower than in the same period in 1994, accounting for 2.0 per cent of the total gas available compared to 6.2 per cent a year earlier. Gas supplied through the inland transmission system was 3.1 per cent higher than in the corresponding period a year ago.

Provisional figures for the first quarter of 1995 show that consumption of natural gas was 5.3 per cent higher than in the first quarter of 1994. In the industrial sector gas consumption rose 2.1 per cent. Gas use for electricity generation rose 12.8 per cent. Consumption by the domestic sector increased by 2.4 per cent and consumption of natural gas by public administration, commerce and the agriculture sector increased by 14.2 per cent. Sales to the industrial sector in the first quarter of 1995 by the independent gas suppliers were about 30 per cent higher than in the same period a year earlier, and accounted for over 50 per cent of natural gas consumption by industry. They also accounted for over 50 per cent of natural gas consumption by the commercial sector (including public administration and agriculture). These compared with about 40 per cent and 30 per cent respectively in the first quarter of 1994.

PETROLEUM (Tables 10 to 16)

In the first half of 1995 the number of offshore development wells was 29 per cent higher than in the same period of 1994 and the number of offshore exploration and appraisal wells was 17 per cent higher. Onshore there were 7 development wells (compared with 4 development wells in the first half of 1994).

Deliveries of petroleum products in the period March to May 1995 were 2.0 per cent lower than in the corresponding period a year ago. Within the total, deliveries of transport fuels were 0.1 per cent higher than a year earlier with

a fall of 4.2 per cent in deliveries of motor spirit being offset by increases of 2.5 per cent in deliveries of aviation turbine fuel and 6.7 per cent in deliveries of Derv fuel. Deliveries of fuel oils (including Orimulsion) fell by 21.6 per cent. Deliveries of unleaded petrol in the three months to May 1995 represented 61.6 per cent of total motor spirit deliveries, compared with 56.4 per cent in the corresponding period a year ago.

Stocks of petroleum products fell by 0.4 per cent during May and at the end of the month they were 3.0 per cent lower than at the end of May 1994. Stocks of crude oil and refinery process oils increased by 4.9 per cent during May, but at the end of the month they were 6.5 per cent lower than a year earlier.

ELECTRICITY (Tables 17 to 22)

Electricity supplied by the major power producers in the latest three months (March to May 1995) was 2.4 per cent more than a year earlier. The supply from CCGT stations rose by 18.7 per cent. Coal fired conventional steam stations supplied 0.1 per cent less electricity than in the March to May period of 1994, while the supply from oil-fired steam stations showed a much larger 18.9 per cent drop in the face of competition from other fuels. The supply from nuclear stations fell by 0.3 per cent, despite a significant contribution from Sizewell B, because of maintenance on reactors at Dungeness and Heysham. When electricity available from other UK sources (which was 17.7 per cent less than a year ago) and imports (down 1.1 per cent) are included, total electricity available through the public distribution system was 1.7 per cent higher than a year earlier.

Fuel used by the major power producers in the three months to May 1995 rose by 1.2 per cent compared to the three months to May 1994. Coal use was down 1.1 per cent on a year earlier while the amount of oil used was 10.4 per cent lower. Gas use was 19.5 per cent higher than that of a year earlier while nuclear and hydro sources contributed 0.7 per cent less.

Revised figures for the first quarter of 1995 show that sales of electricity through the public distribution system were 2.9 per cent higher than a year earlier. Sales to domestic, commercial, and industrial customers rose by 1.7 per cent, 3.5 per cent and 3.1 per cent respectively. When electricity available from other generators is included, total consumption of electricity during the first quarter of 1995 was 3.0 per cent higher than a year earlier.

PRICES (Tables 25 to 29)

Revised industrial sector fuel price indices expressed in real terms for the first quarter of 1995 are shown in Table 27. Between the first quarter of 1994 and the first quarter of 1995, real gas prices fell by 8.6 per cent, but real heavy fuel oil prices rose by 28.8 per cent. The price index for electricity fell by 0.6 per cent in real terms.

Between mid-April and mid-May 1995 the prices of Derv fuel, 4 star, super unleaded and premium unleaded petrol all rose by between $\frac{1}{2}$ and 1 penny per litre. The crude oil price index (which is calculated in sterling terms) showed that the average cost of crude oil acquired by refineries in May rose by a provisional 3.1 per cent from April's level to be over 17 per cent higher than a year earlier.

The back page of this issue carries an article on renewable energy statistics for the United Kingdom.

TOTAL ENERGY

TABLE 1. Indigenous production of primary fuels¹

Million tonnes of oil equivalent

	Total	Coal ²	Petroleum ^{3,4}	Natural gas ⁵	Primary electricity	
					Nuclear	Natural flow hydro ⁶
1990r	219.4	56.9	100.1	45.7	16.26	0.45
1991r	226.7	58.0	99.9	50.9	17.43	0.40
1992r	226.5	52.1	103.7	51.8	18.45	0.47
1993r	235.2	42.2	110.1	60.9	21.49	0.39
1994r	256.5	29.9	139.5	65.4	21.22	0.47
Per cent change	+9.1	-29.1	+26.6	+7.3	-1.3	+20.4
1994 Jan-May	108.7	12.1	56.0	31.6	8.71	0.24
1995 Jan-May p	116.0	12.2	60.7	34.5	8.38	0.22
Per cent change	+6.7	+0.5	+8.4	+9.1	-3.8	-7.7
1994 Mar	24.3	3.1	11.5	7.5	2.04	0.06
Apr	20.5	2.1	11.3	5.4	1.58	0.06
May	19.5	2.3	11.4	4.1	1.71	0.04
Total	64.2	7.5	34.3	17.0	5.34	0.16
1995 Mar	26.7	3.3	12.8	8.7	1.91	0.05
Apr	22.0	2.3	12.4	5.5	1.79	0.04
Mar p	20.3	2.5	11.5	4.7	1.56	0.02
Total	69.0	8.0	36.6	18.9	5.26	0.11
Per cent change	+7.4	+7.4	+6.9	+11.5	-1.6	-27.8

1. Annual data include renewable sources (wood, waste, land fill gas, sewage gas, photovoltaics, solar and geothermal etc). 2. Includes an estimate for slurry, etc recovered and disposed of otherwise than by the British Coal Corporation (BCC). 3. Calendar months. 4. Crude oil, offshore and land, plus condensates and petroleum gases derived at onshore treatment plants. 5. Including colliery methane. Excluding gas flared or re-injected gas. 6. Including generation at wind stations.

TABLE 2. Inland energy consumption: primary fuel input basis¹

Million tonnes of oil equivalent

	Primary electricity							Primary electricity						
	Total	Coal ^{2,3}	Petroleum ⁴	Natural	Natural flow		Net	Total	Coal	Petroleum	natural	Natural flow		Net
				gas ⁵	Nuclear	hydro ⁶	imports				gas	Nuclear	hydro	imports
Unadjusted ⁷								Seasonally adjusted and temperature corrected ⁸ (annualised rates)						
1990r	214.1	67.4	78.3	50.6	16.26	0.45	1.03	221.0	69.2	78.1	56.0	16.26	0.45	1.03
1991r	218.7	67.6	77.8	54.1	17.43	0.40	1.41	218.1	67.7	74.8	56.4	17.43	0.40	1.41
1992r	217.2	63.6	78.3	55.0	18.45	0.47	1.44	219.2	63.7	78.8	56.4	18.45	0.47	1.44
1993r	220.4	55.6	78.9	62.6	21.49	0.39	1.44	221.4	55.6	78.9	63.6	21.49	0.39	1.44
1994r	218.5	52.2	77.9	65.2	21.22	0.47	1.45	222.8	53.0	78.9	67.7	21.22	0.47	1.45
Per cent change	-0.9	-6.1	-1.2	+4.1	-1.3	+20.4	+1.0	+0.6	-4.6	—	+6.5	-1.3	+20.4	+1.0
1994 Jan-May	96.9	22.5	31.5	33.3	8.71	0.24	0.60	221.8	52.5	77.5	69.5	20.47	0.47	1.43
1995 Jan-May p	96.7	22.3	30.0	35.2	8.38	0.22	0.59	224.2	52.4	75.0	75.2	19.79	0.41	1.43
Per cent change	-0.2	-1.0	-4.7	+5.6	-3.8	-7.7	-0.3	+1.1	-0.2	-3.2	+8.3	-3.3	-12.2	-0.3
1994 Mar	23.4	5.5	7.7	7.9	2.04	0.06	0.14	225.7	52.9	79.5	71.0	20.02	0.49	1.71
Apr	17.3	4.0	5.9	5.7	1.58	0.06	0.12	221.0	52.2	76.5	69.7	20.72	0.48	1.38
May	15.3	3.6	5.6	4.3	1.71	0.04	0.11	220.4	51.2	75.8	68.7	22.67	0.58	1.34
Total	56.0	13.0	19.2	17.9	5.34	0.16	0.37	222.3	52.1	77.3	69.8	21.13	0.52	1.48
1995 Mar	24.3	5.7	7.6	9.0	1.91	0.05	0.15	225.4	53.5	75.6	75.3	18.78	0.39	1.76
Apr	16.7	3.7	5.4	5.6	1.79	0.04	0.11	219.8	50.6	71.6	72.7	23.23	0.37	1.37
May p	15.4	3.6	5.4	4.7	1.56	0.02	0.10	226.8	50.7	76.2	77.8	20.56	0.26	1.25
Total	56.4	13.0	18.4	19.3	5.26	0.11	0.36	224.0	51.6	74.5	75.3	20.86	0.34	1.46
Per cent change	+0.7	-0.3	-4.1	+7.4	-1.6	-27.8	-1.1	+0.7	-1.0	-3.6	+7.8	-1.3	-34.3	-1.1

1. Annual data include renewable sources (see footnote 1 to Table 1 above). 2. Consumption by fuel producers plus disposals (including imports) to final users, plus (for annual unadjusted figures only) net foreign trade and stock change in other solid fuels. 3. See Technical Note on Statistical Calendar in June 1990 issue. 4. Inland deliveries for energy use plus refinery fuel and losses minus the differences between deliveries and actual consumption at power stations and gas works. 5. Including gas used during production and small amounts of colliery methane, but excluding gas flared or re-injected. Annual data exclude gas used for non-energy purposes. 6. Excludes generation from pumped storage stations. Including generation at wind stations. 7. Not seasonally adjusted or temperature corrected. 8. Coal, petroleum and natural gas are temperature corrected.

NOTES TO TABLES

Figures for the latest periods and the corresponding averages or totals are provisional and are liable to subsequent revision. The figures have not been adjusted for temperature or seasonal factors except where noted in Tables 2 and 27. Due to rounding the sum of the constituent items may not equal the totals. Percentage changes relate to the corresponding period a year ago. They are calculated from unrounded figures but are shown only as (+) or (-) when the percentage change is very large. These comparisons can be affected by calendar differences. Monthly figures relate to four week periods except where otherwise indicated. Figures in the Gas and Petroleum sections relate to calendar months.

All figures relate to the United Kingdom unless otherwise indicated. Definitions and abbreviations are shown below Table 23. Approximate conversion factors are shown after Table 29.

Symbols used in the tables

- .. not available
- Nil or less than half the final digit shown
- * five-week period
- p provisional
- r revised; where a column or row shows 'r' at the beginning, most, but not necessarily all, of the data have been revised.
- e estimated; totals of which the figures form a constituent part are therefore partly estimated.

TABLE 3. Supply and use of fuels

Thousand tonnes of oil equivalent

			Per cent change	1993r				1994r				Per cent change
	1993r	1994r		1st quarter	2nd quarter	3rd quarter	4th quarter	1st quarter	2nd quarter	3rd quarter	4th quarter	
PRIMARY FUELS AND EQUIVALENTS												
Production of primary fuels ¹												
Coal	42,234	29,939	-29.1	12,445	9,930	9,734	10,125	7,886	7,432	7,133	7,488	-26.0
Petroleum ²	110,136	139,472	+26.6	25,591	24,010	28,067	32,467	33,278	33,998	34,553	37,642	+15.9
Natural gas ³	60,915	65,384	+7.3	19,399	11,331	9,477	20,708	22,342	13,381	10,413	19,248	-7.1
Primary electricity ⁴	21,879	21,685	-0.9	5,982	5,132	4,995	5,770	5,566	5,443	5,202	5,473	-5.2
Total ⁵	235,173	256,490	+9.1	63,405	50,408	52,288	69,073	69,045	60,262	57,324	69,858	+1.1
Arrivals, Petroleum ⁶												
Other	18,682	15,091	-19.2	4,966	4,326	4,642	4,749	4,853	3,654	3,194	3,390	-28.6
Shipments												
Marine Bunkers	97,011	116,378	+20.0	20,758	21,371	26,191	28,691	28,398	27,998	29,767	30,215	+5.3
	2,612	2,448	+6.3	546	715	722	629	602	640	637	569	-9.5
Stock changes ⁷												
Solid fuels	+631	+11,345		+159	-69	-702	+1,243	+4,209	+2,847	+1,097	+3,192	
Crude Petroleum	-342	+131		-675	+90	+713	-470	+238	+333	-823	+383	
Petroleum products	-292	+316		-200	+16	-97	-11	+774	-397	+294	-354	
Natural gas	+130	+264		+284	-244	-379	+469	+233	+122	+5	-96	
Non-energy use ⁸	13,720	14,742	+7.4	3,531	3,110	3,587	3,494	3,536	3,709	3,459	4,039	+15.6
Statistical difference ⁹	+1,919	-534		+601	-205	+873	+651	-291	-1,290	+966	+81	
Total primary energy input ¹⁰												
	220,413	218,476	-0.9	62,266	48,649	46,232	63,267	64,252	50,199	45,916	58,109	-8.2
Conversion losses etc. ¹¹												
	68,331	66,391	-2.8	18,592	15,269	14,995	19,476	19,301	15,485	14,712	16,893	-13.3
Final energy consumption ¹²												
	152,082	152,085	—	43,674	33,380	31,237	43,791	44,951	34,714	31,204	41,216	-5.9
FINAL CONSUMPTION BY USER ¹²												
Iron and steel industry												
Coal	2	2	—	—	—	—	—	—	—	—	—	—
Other solid fuel ¹³	3,364	3,597	+6.9	919	882	748	814	893	938	854	911	+11.9
Coke oven gas	537	568	+5.8	137	139	128	133	141	143	141	143	+7.3
Gas ¹⁴	1,340	1,748	+30.4	386	311	289	355	458	411	458	421	+18.7
Electricity	783	846	+8.0	204	199	184	196	219	215	199	213	+8.4
Petroleum	928	927	-0.1	247	234	218	229	226	272	203	226	-1.4
Total	6,954	7,687	+10.5	1,893	1,772	1,565	1,723	1,932	1,987	1,850	1,918	+11.3
Other industries												
Coal	3,551	3,388	-4.6	818	840	866	1,027	977	808	808	795	-22.6
Other solid fuel ¹³	380	324	-14.7	89	81	73	137	85	65	47	126	-8.1
Coke oven gas	23	22	-4.3	9	9	3	3	8	5	5	5	+66.4
Gas ¹⁴	9,437	10,512	+11.4	2,782	2,048	1,869	2,738	3,042	2,480	1,980	3,010	+9.9
Electricity	7,545	7,570	+0.3	1,906	1,825	1,837	1,977	1,952	1,873	1,753	1,992	+0.7
Petroleum	7,670	7,997	+4.3	2,112	1,715	1,763	2,080	2,493	1,688	1,732	2,083	+0.1
Total	28,606	29,812	+4.2	7,720	6,516	6,410	7,960	8,541	6,937	6,328	8,005	+0.6
Transport sector												
Electricity ¹⁵	641	613	-4.4	169	157	157	157	162	151	149	151	-3.9
Petroleum	49,736	49,987	+0.5	11,799	12,446	12,910	12,580	11,710	12,514	13,066	12,697	+0.9
Total	50,307	50,600	+0.4	11,965	12,604	13,069	12,738	11,871	12,665	13,216	12,848	+0.9
Domestic sector												
Coal	3,498	2,942	-15.9	956	768	863	910	941	710	727	563	-38.2
Other solid fuel ¹³	1,080	874	-19.1	263	292	249	275	261	251	188	175	-36.4
Gas ¹⁴	29,254	28,355	-3.1	10,748	4,669	3,196	10,642	11,285	5,414	2,797	8,859	-16.8
Electricity	8,639	8,655	+0.2	2,585	1,853	1,642	2,560	2,661	1,788	1,683	2,523	-1.4
Petroleum	3,038	3,022	-0.5	995	529	567	947	1,147	501	542	832	-12.1
Total	45,519	43,859	-3.6	15,556	8,109	6,510	15,344	16,304	8,651	5,950	12,954	-15.6
Other final users ¹⁶												
Coal	566	496	-12.4	207	111	76	172	189	99	73	135	-21.2
Other solid fuel ¹³	176	158	-10.2	41	47	29	59	34	43	38	43	-26.3
Gas ¹⁴	8,433	8,048	-4.6	3,080	1,686	1,056	2,611	2,878	1,711	1,187	2,272	-13.0
Electricity	6,999	7,129	+1.9	1,899	1,575	1,567	1,958	1,852	1,663	1,656	1,958	—
Petroleum	4,454	4,297	-3.5	1,356	938	910	1,250	1,308	980	943	1,066	-14.7
Total	20,626	20,126	-2.4	6,559	4,363	3,662	6,042	6,261	4,494	3,895	5,476	-9.4
Total final users ⁵	152,082	152,085	—	43,674	33,380	31,237	43,791	44,951	34,714	31,204	41,216	-5.9
FINAL CONSUMPTION BY FUEL ¹²												
Coal	7,616	6,827	-10.4	1,983	1,720	1,803	2,112	2,106	1,620	1,615	1,488	-29.6
Other solid fuel ¹³	4,999	4,953	-0.9	1,317	1,303	1,100	1,280	1,265	1,297	1,139	1,252	-2.1
Coke oven gas	560	591	+5.4	146	148	130	136	149	148	146	148	+8.8
Gas ¹⁴	48,464	48,663	+0.4	16,991	8,704	6,409	16,359	17,683	10,012	6,392	14,576	-10.9
Electricity	24,607	24,813	+0.8	6,764	5,606	5,384	6,853	6,847	5,687	5,438	6,841	-0.2
Petroleum	65,826	66,229	+0.6	16,516	15,857	16,362	17,091	16,877	15,954	16,494	16,906	-1.1
Total all fuels ⁵	152,082	152,085	—	43,674	33,380	31,237	43,791	44,951	34,714	31,204	41,216	-5.9

1. Annual data include estimated production from renewable sources of energy (e.g. solid waste, landfill gas, etc). 2. Crude petroleum and natural gas liquids. Annual data include extended well-test production. 3. Excluding gas flared or re-injected. 4. Nuclear, natural flow hydro and generation at wind stations. 5. Includes small amounts of solar and geothermal heat. 6. Crude petroleum, process oils and petroleum products. 7. Stock fall (+) or stock rise (-). 8. Petroleum and natural gas. 9. Supply greater than recorded demand (—). 10. More detailed analyses of the 1993 and 1994 figures are shown in the Digest of United Kingdom Energy Statistics 1995 Tables 1, 2 and 3. 11. Losses in conversion and distribution and used by fuel industries. 12. Deliveries, except for natural gas, electricity and iron and steel industry use of solid fuels. 13. Coke and other manufactured solid fuels. 14. Includes colliery methane. 15. Includes use in transport-related premises, eg. airports, warehouses, etc. 16. Mainly public administration, commerce and agriculture.

COAL & OTHER SOLID FUELS

TABLE 4. Coal production and foreign trade

Thousand tonnes

	Production			Net imports	Imports ²	Exports
	Total ¹	Deep-mined	Opencast			
1990	92,762	72,899	18,134	+12,476	14,783	2,307
1991	94,202	73,357	18,636	+17,787	19,611	1,824
1992	84,493	65,800	18,187	+19,366	20,339	973
1993	68,199	50,457	17,006	+17,286	18,400	1,114
1994 p	48,030	31,102	16,614	+13,817	15,041	1,225
Per cent change	-29.6	-38.4	-2.3		-18.3	+9.9
1994 Jan-May	19,851	13,572	6,141	6,544	7,062	519
1995 Jan-May p	19,959	13,669	6,056	6,484	6,736	252
Per cent change	+0.5	+0.7	-1.4		-4.6	-51.5
1994 Mar*	5,068	3,365	1,664	+1,375	1,498	123
Apr	3,467	2,297	1,144	+1,175	1,245	70
May	3,734	2,405	1,304	+1,115	1,194	79
Total	12,268	8,068	4,112	+3,665	3,936	272
1995 Mar*	5,360	3,661	1,674	+1,439	1,485 r	46 r
Apr	3,747	2,552	1,136	+1,053	1,100	47
May p	4,071	2,717	1,278	+1,546	1,600	54
Total	13,177	8,929	4,088	+4,037	4,185	148
Per cent change	+7.4	+10.7	-0.6		+6.3	-45.7

1. Includes an estimate for slurry. 2. To December 1992, as recorded in the Overseas Trade Statistics of the United Kingdom (OTS). From January 1993 import figures include an additional estimate for unrecorded trade. Import figures for recent months are estimated using information available for extra-EC trade until monthly statistics for intra-EC trade become available from the Central Statistical Office.

TABLE 5. Inland coal use

Thousand tonnes

	Fuel producers consumption					Final users (disposals by collieries and opencast sites)		
	Primary		Secondary			Industry ²	Domestic ²	Other ³
	Total	Collieries	Electricity generators	Coke ovens	Other conversion industries ¹			
1990	108,256	117	84,014	10,852	1,544	6,280	4,239	1,211
1991	107,513	112	83,542	10,011	1,501	6,426	4,778	1,144
1992	100,620	79	78,509	9,031	1,319	6,581	4,156	945
1993	86,783	48	66,163	8,479	1,329	5,300	4,638	826
1994 p	81,717	22	62,387	8,595	1,190	4,926	3,876	721
Per cent change	-5.8	-52.9	-5.7	+1.4	-10.5	-7.1	-16.4	-12.8
1994 Jan-May	36,008	15	27,640	3,472	544	2,154	1,834	349
1995 Jan-May p	35,618	3	27,649	3,517	383	2,058	1,648	360
Per cent change	-1.1	-77.7	(-)	+1.3	-29.6	(-)	-10.1	+3.3
1994 Mar*	8,793	5	6,722	817	111	605	436	98
Apr	6,343	3	4,868	670	86	360	299	57
May	5,907	2	4,191	669	100	415	490	41
Total	21,043	9	15,780	2,156	297	1,380	1,225	196
1995 Mar*	9,024 r	—	7,091 r	842	90	505 r	348 r	148
Apr	5,974	1	4,400	670	83	474	330	16
May p	5,773	1	4,218	668	80	402	379	25
Total	20,770	2	15,709	2,180	252	1,381	1,057	189
Per cent change	-1.3	-76.8	-0.5	+1.2	-15.1	(-)	-13.7	-3.5

1. Low temperature carbonisation and patent fuel plants. 2. Includes estimates of imports. 3. Public administration, commerce and agriculture.

TABLE 6. Stocks of coal at end of period

Thousand tonnes

	Distributed				Total undistributed stocks
	Total ¹	Total distributed stocks	Electricity generators ²	Coke ovens	
1990	37,760	28,747	27,112	1,564	9,013
1991	43,321	32,344	30,648	1,631	10,977
1992	47,207	33,493	32,173	1,271	13,714
1993	45,860	29,872	28,579	1,218	15,989
1994 p	26,572	15,301	14,102	1,098	11,271
1993 Mar*	39,157	26,097	24,981	1,054	13,060
Apr	37,315	24,390	23,246	1,029	12,925
1994 May	36,277	23,472	22,242	1,121	12,805
1994 Mar*	20,224	11,193	9,921	1,199	9,031
Apr	19,140	10,514	9,422	1,024	8,625
1995 May p	19,088	10,406	9,182	1,146	8,682
Absolute change: in latest month	-52	-108	-241	+122	+56
on a year ago	-17,189	-13,066	-13,060	+25	-4,124

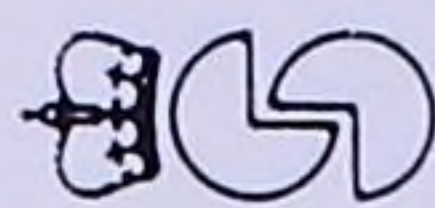
1. Excluding distributed stocks held in merchants' yards, etc., mainly for the domestic market, and stocks held by the industrial sector. 2. Coal fired power stations belonging to major power producers only (see box below Table 23).

Production of primary fuels	1973 ⁽¹⁾	1993	1994
<i>(million tonnes of oil equivalent)</i>			
Total ⁽²⁾	118.1	235.2 r	256.5
Coal ⁽³⁾	82.6	42.2 r	29.9
Petroleum ⁽⁴⁾	0.4	110.1	139.5
Natural gas ⁽⁵⁾	27.2	60.9 r	65.4
Nuclear electricity	7.5	21.5	21.2
Natural flow hydro ⁽⁶⁾	0.3	0.4	0.5
Consumption of primary fuels			
<i>(million tonnes of oil equivalent)</i>			
Gross inland consumption of primary fuels	235.8	234.1 r	233.2
Non-energy consumption ⁽⁷⁾	12.6	13.7	14.7
Inland energy consumption of primary fuels	223.3	220.4 r	218.5
Conversion losses, etc.	62.6	68.3 r	66.4
Energy supplied to final users	160.7	152.1	152.1
Inland energy consumption			
Primary fuels and equivalents			
<i>(million tonnes of oil equivalent)</i>			
Total ⁽²⁾	223.2	220.4 r	218.5
Coal ⁽³⁾⁽⁸⁾	83.2	55.6 r	52.2
Petroleum ⁽⁸⁾	104.2	78.9 r	77.9
Natural gas ⁽⁵⁾	28.0	62.6 r	65.2
Nuclear electricity	7.5	21.5	21.2
Natural flow hydro electricity ⁽⁶⁾	0.3	0.4	0.5
Net imports of electricity	—	1.4	1.5
Total (temperature corrected)	223.1	221.4 r	222.8
Total energy supplied to final users⁽⁹⁾			
<i>(millions tonnes of oil equivalent)</i>			
Total	160.7	151.6 r	152.1
By fuel:			
Coal ⁽³⁾	20.3	7.6	6.8
Other solid fuel ⁽¹⁰⁾	19.6	5.6 r	5.5
Petroleum products	74.6	65.8 r	66.2
Gas ⁽⁵⁾	27.2	48.5 r	48.7
Electricity	18.9	24.6	24.8
By sector:			
Iron and steel industry	16.6	7.0 r	7.7
Other industry	48.3	28.6 r	29.8
Transport	32.4	50.4 r	50.6
Domestic consumers	37.6	45.5 r	43.9
Other consumers	18.8	20.6 r	20.1
Approximate equivalents			
Oil and coal equivalent – conventions used			
1 tonne oil equivalent (defined as a unit of energy) = 397 therms			
1 tonne of oil = 1.7 tonnes of coal = 425 therms of gas			
Crude oil:			
1 tonne = 7.55 barrels of North Sea crude			
48 million tonnes a year = 1 million barrels a day			
Natural gas: 100 million cu ft a day = 375 million therms a year			
1 million cu metres a day = 130 million therms a year			
1 million therms = 29,3071 Gigawatt hours (GWh)			

Coal	1973 ⁽¹⁾	1993	1994
<i>(million tonnes)</i>			
Total coal production	132.0 r	68.2	48.0
Of which :			
Deep-mined	120.0	50.5	31.1
Opencast	10.1	17.0	16.6
Other sources ⁽¹¹⁾	1.8	0.7	0.3
Imports	1.7	18.4	15.0
Exports ⁽¹²⁾	2.7	1.1	1.2
Stock changes ⁽¹³⁾	-2.6	-1.4 r	-19.3
Total inland consumption	133.4	86.8	81.7
Fuel producers			
Electricity generators	76.8 ⁽¹⁴⁾	66.2	62.4
Coke ovens	21.9	8.5	8.6
Other (including collieries)	5.5	1.4	1.2
Final users			
Domestic consumers	14.5	4.6	3.9
Industry (including iron and steel industry)	12.1 ⁽¹⁴⁾	5.3	4.9
Public administration	2.0	0.6	0.5
Other consumers	0.6	0.2	0.2
Electricity			
Total electricity generated (TWh) ⁽¹⁵⁾	281.8	323.1 r	325.4
Total electricity supplied (gross) (TWh) ⁽¹⁵⁾	262.6	303.8 r	307.9
Of which:			
Conventional steam stations	233.8	192.1	181.5
Combined cycle gas turbine stations	-	23.2	37.7
Nuclear stations	24.3	81.0	80.0
Natural flow hydro stations ⁽⁶⁾	3.9	4.3 r	5.0
Pumped storage hydro stations	0.7	1.4	1.4
Renewables other than hydro	..	1.5	2.1
Total consumption (TWh) ⁽¹⁵⁾	243.5	295.7 r	296.2
Fuel producers ⁽¹⁶⁾	6.9	9.6 r	7.7
Final users:			
Domestic consumers	91.3	100.5 r	100.6
Iron and steel industry	12.9	9.1 r	9.8
Other industry ⁽¹⁶⁾	84.5	87.7 r	88.0
Public administration	13.1	21.7 r	22.9
Other consumers	35.1	67.2 r	67.1
Total fuel input ⁽¹⁷⁾	74.9	75.3 r	73.7
<i>(million tonnes of oil equivalent)</i>			
Of which:			
Coal and coke	48.5	39.6 r	37.1
Oil	18.1	5.8 r	4.1
Natural gas	0.6	7.0 r	9.9
Nuclear electricity	7.5	21.5	21.2
Natural flow hydro electricity	0.3	0.4	0.4
Other fuels (including renewables other than hydro)	..	1.0 r	1.1
Net imports (TWh) ⁽¹⁵⁾	0.1	16.7	16.9
Total output capacity (MW) ⁽¹⁸⁾	67,615	69,050 r	68,937
(at end-March of following year)			
Maximum load met by public distribution system(MW) ⁽¹⁹⁾	45,976	54,848	52,362

Petroleum	1973 ⁽¹⁾	1993	1994
<i>(million tonnes)</i>			
Refinery distillation capacity at end of year	142.0	91.8	92.9
Refinery output <i>(million tonnes)</i>	106.0	89.6	86.6
Total deliveries of petroleum products (million tonnes)	99.8	75.8	75.0
Of which:			
Motor spirit	16.9	23.8 r	22.8
Derv	5.7	11.8	12.9
Fuel oil	39.4	10.8	9.3
Other products for used for energy	26.2	18.7	18.7
Non-energy products	11.6	10.7	11.2
Total deliveries of products used for energy <i>(million tonnes)</i>	88.2	65.1	63.8
Electricity generators	17.0 ⁽¹⁴⁾	6.0 r	4.1
Final users			
Domestic consumers	3.8	2.7	2.9
Road transport	22.6	35.6	35.8
Iron and steel industry	5.0 ⁽¹⁴⁾	0.9	0.9
Other industry	22.1 ⁽¹⁴⁾	7.2 r	7.3
Other consumers	17.7	12.8 r	12.9
Foreign trade in petroleum			
Crude oil			
Imports : Quantity <i>(million tonnes)</i>	113.26	48.99	39.84
Average value per tonne (£) c.i.f. ⁽²⁰⁾	11.44	83.25	75.95
Exports: Quantity <i>(million tonnes)</i>	2.80	59.78 r	77.61
Average value per tonne (£) f.o.b. ⁽²¹⁾	8.32	83.87	77.24
Refined petroleum products and process oils			
Imports : Quantity <i>(million tonnes)</i>	22.60	20.97 r	20.45
Average value per tonne (£) c.i.f. ⁽²⁰⁾	17.19	82.53 r	81.66
Exports: Quantity <i>(million tonnes)</i>	17.09	27.02 r	27.05
Average value per tonne (£) f.o.b. ⁽²¹⁾	18.59	111.01 r	100.57
Gas ⁽²²⁾			
<i>(Terawatt hours) (TWh) ⁽¹⁵⁾</i>			
Total gas available	349.0	703.9	728.7
Total sales of gas	317.5	666.5 r	706.2
of which:			
Town gas	68.1	-	-
Natural gas direct sales ⁽²³⁾	249.4	666.5 r	706.2
Fuel producers	11.4 ⁽¹⁴⁾	85.6 r	117.4
Final users			
Domestic consumers	141.1	340.2	329.7
Iron and steel industry ⁽²⁴⁾	11.6 ⁽¹⁴⁾	15.6 r	20.3
Other industry	121.6 ⁽¹⁴⁾	127.5 r	145.7
Public administration	15.0	38.7 r	40.1
Other consumers	16.7	58.9 r	52.9

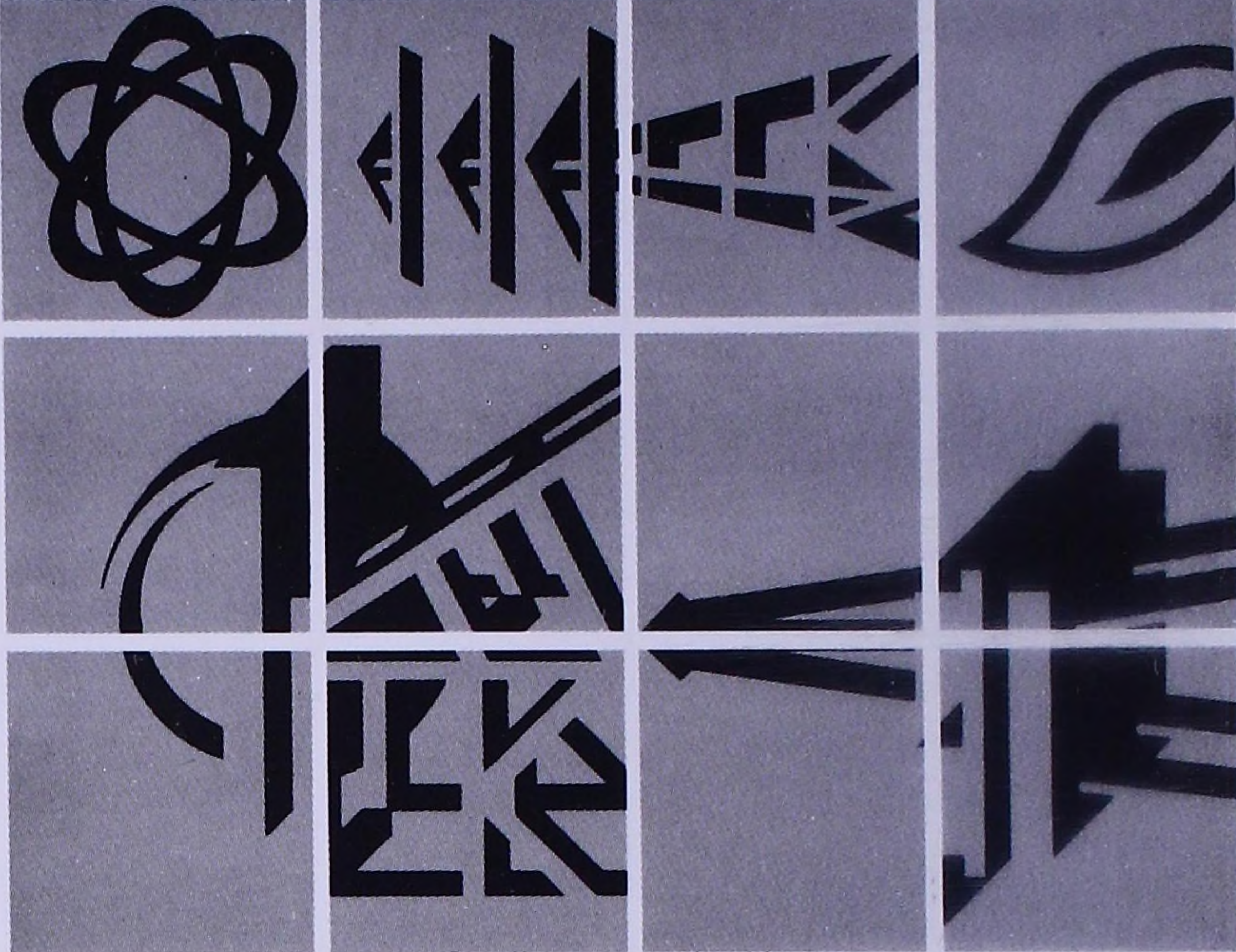
United Kingdom Energy Statistics 1995



Government Statistical
Service

dti

Department of Trade and Industry



NOTES

Due to rounding the sum of constituent items may not equal the total.

- Nil or negligible
- .. Not available
- r Revised

Footnotes

- (1) 1973 is used as a reference year to mark the end of a period during the 1960s and early 1970s of continuous growth in energy consumption.
- (2) Includes solar and geothermal heat.
- (3) Includes solid renewable sources (wood, straw, waste, etc.).
- (4) Crude oil plus NGLs and primary feedstocks.
- (5) Includes colliery methane, landfill gas and sewage gas.
- (6) Includes generation at wind stations.
- (7) Petroleum and natural gas.
- (8) Adjusted for stock change and net trade in derived products.
- (9) For 1973, includes fuel used by industry and commerce to generate electricity. For 1993 and 1994 includes electricity generated by industry and commerce.
- (10) Includes coke oven gas and creosote/pitch mixtures.
- (11) Estimates of slurry etc. from sources other than British Coal.
- (12) For 1973 based on British Coal's shipments; for 1993 and 1994 based on HM

Custom and Excise data;

- (13) Stock fall (-), stock rise (+).

(14) Electricity generators cover public supply and transport power stations only. Fuel used at power stations owned by the industrial sector is included in final use by industry.

- (15) TWh = Terawatt hours (1 TWh = 1,000 GWh = 1,000 million kWh).

(16) In 1973 nuclear electricity generation was included in 'Other industry'.

(17) For 1973 data relate to the major UK power producers, transport undertakings and industrial hydro and nuclear stations only.

(18) For 1973 data relate to end-December and cover major UK power producers only. Capacity of other generators is recorded at end-December; for 1993 and 1994 the figures were 4,743 MW and 4,560 MW respectively.

(19) Maximum load met between 1 April of year shown and 31 March of the following year.

- (20) c.i.f. = cost, insurance and freight.

(21) f.o.b. = free on board.

(22) Including sales of substitute natural gas.

(23) For 1973, as reported by the Iron and Steel Statistics Bureau; for 1993 and 1994 as reported by British Gas plc (BG), independent gas marketing companies and UK Continental Shelf producers other than BG.

(24) For 1993 and 1994 comprises methane-UKCS natural gas.

(25) Includes VAT on domestic fuels at 8% from 1 April 1994.

(26) Figures for 1973 are on a different basis from other years shown.

(27) Years ended March of following year.

(28) For 1973 the Wholesale Price Index.

(29) For 1973, includes petroleum products.

(30) VAT has been chargeable at a positive rate since 1 April 1974. At the end of 1993 and 1994 the rate was 17.5%. Rates of duty from 1 January 1995, in pence per litre, are 36.14 for leaded motor spirit and 31.32 for unleaded motor spirit and derv fuel.

(31) For industrial and commercial consumers these fuels became liable to the standard rate of VAT on 1 July 1990, recoverable by the majority of such consumers. For domestic consumers these fuels were zero-rated before 1 April 1994, when they became liable to a rate of 8%.

(32) Based on imports and exports on an 'f.o.b.' basis. For 1973 'Oil' relates to crude oil only, petroleum products being include in 'Other fuels'. From 1991 'Oil' includes crude oil and petroleum products.

(33) Including non-energy use and marine bunkers.

Data in this card are extracted from the DIGEST OF UNITED KINGDOM ENERGY STATISTICS 1995, published in July 1995 and available from HMSO, price £24.95 net.

Shorter term data from some of the series shown may also be found in ENERGY TRENDS, the Department of Trade and Industry's monthly bulletin of energy statistics. Details of subscriptions can be obtained from Jane Rees-Davies, DTI, EPA4, Room 3.3.18, 1 Palace Street, London SW1E 5HE

Continental Shelf oil and gas	1973 ⁽¹⁾	1993	1994
Production			
Crude oil (<i>million tonnes</i>)	0.1	94.0	119.0
Natural gas liquids (including condensates)			
(<i>million tonnes</i>)	0.3	6.1	7.7
Natural gas (<i>million cubic metres</i>)	28,903	65,497	69,969

Prices

General index of retail prices ⁽²⁵⁾
(*monthly average: 13 January 1987 = 100*)

All items	23.7	140.7	144.1
Fuel and light	18.7	126.2	131.7
Coal and solid fuels	17.4	116.8	124.3
Gas	23.9	113.3	120.1
Electricity	18.0	141.0	145.7
Petrol and oil	-	142.6	149.1

Representative prices of fuels used by industry

Coal (£ per tonne)	8.9	40.6	40.2
Fuel oil (£ per tonne)	12.8	68.6	74.2
Gas (<i>pence per kWh</i>)	0.105 ⁽²⁷⁾	0.769	0.767
Electricity (<i>pence per kWh</i>)	0.740	4.263	4.150
Coal (<i>pence per kWh</i>)	0.116	0.541	0.535
Fuel oil (<i>pence per kWh</i>)	0.106	0.576	0.624
Gas (<i>pence per kWh</i>)	0.105 ⁽²⁷⁾	0.769	0.767
Electricity (<i>pence per kWh</i>)	0.740	4.263	4.150

Producer price index for materials

(1990 = 100)

Fuels used by manufacturing industry ⁽²⁹⁾

Coal	16.4	109.0 r	107.4
Crude oil	13.4	92.1	82.2
	11.9	91.1	80.5

Effective rates of duty at end of years

(*pence per litre*)

Motor spirit excluding VAT ⁽³⁰⁾	- leaded - unleaded	
	27.79	33.14
Derv fuel excluding VAT ⁽³⁰⁾	23.42	28.32
Fuel oil ⁽³¹⁾	4.95	27.70
Gas oil ⁽³¹⁾	0.22	1.16
	0.22	1.64

Foreign trade in fuels

(£ million)

Total net exports of fuels ⁽³²⁾	-947	1,400 r	3,263
Of which:			
Oil (crude oil and petroleum products)	-940	2,686 r	4,264
Other fuels	-7	-1,286 r	-1,001

Import dependency

Primary fuels and equivalents

(*million tonnes of oil equivalent*)

Total gross inland consumption of primary fuels ⁽³³⁾	241.6	236.7 r	235.7
Total net imports of primary fuels	121.9	-	-
Import dependency (per cent)	50.5	-	-

TABLE 7. Other solid fuel production, foreign trade and use

Thousand tonnes

		Coke and breeze					Other manufactured solid fuels ¹					
		Consumption					Consumption					
		Production	Net imports ²	Iron and steel industry ³	Other industry ^{4,5}	Domestic ⁵	Total use	Production	Net Imports ²	Domestic	Industry ⁴	Total use
1990		7,707	14	6,668	542	569	7,779	1,139	-21	1,149	64	1,213
1991		7,163	55	6,344	450	469	7,263	1,198	43	1,179	21	1,200
1992		6,528	305	6,115	515	395	7,025	1,056	55	1,068	21	1,089
1993		6,093	514	5,928	546	285	6,760	1,111	9	1,127	22	1,149
1994 p		6,202	231	6,168	413	158	6,739	1,034	-27	904	69	973
Per cent change		+1.8		+4.0	-24.5	-44.4	-0.3	-6.9		-19.9	(+)	-15.4
1993	2nd quarter	1,515	181	1,578	128	81	1,787	259	7	303	5	309
	3rd quarter	1,539	92	1,338	118	44	1,500	285	-3	269	5	274
	4th quarter	1,524	172	1,458	169	92	1,719	276	-1	269	8	277
1994	1st quarter p	1,522	36	1,481	136	57	1,675	310	1	267	15	282
	2nd quarter p	1,561	75	1,628	96	50	1,775	252	-1	260	19	279
	3rd quarter p	1,565	99	1,464	75	31	1,571	250	-13	191	18	209
	4th quarter p	1,554	21	1,595	104	20	1,719	221	-13	162	17	180
1995	1st quarter p	1,550	3	1,536	84	23	1,644 r	183	-21 r	189	18 r	207 r
Per cent change		+1.9		+3.7	-38.2	-59.0	-1.8	-41.0		-29.2	+21.1	-26.5

1. These include Homefire, Ancit, Phurnacite and fuel produced by low temperature carbonisation. 2. The latest quarter's import figures are estimated. They will be revised when the intra-EC trade data becomes available from the Central Statistical Office. 3. Includes an estimate of iron foundries' consumption. 4. Includes own use by fuel producers. 5. Includes an estimate of imports.

GAS

TABLE 8. Natural gas production and supply

		Gross gas production ¹	Exports	Imports	Gas available ²	Indigenous	Imported	Gas transmitted ³
		GWh				Percentage of gas available for consumption in UK		GWh
1990		527,583	—	79,833	569,235	86.0	14.0	568,037
1991		587,825	—	72,007	623,437	88.4	11.6	616,194
1992		597,854	620	61,255	619,286	90.1	9.9	619,921
1993		703,976	6,824	48,528	703,885 r	93.1	6.9	701,991
1994		755,383	9,557	33,053	728,738	95.5	4.5	729,374
Per cent change		+7.3	+40.0	-31.9	+3.5			+3.9
1994	Jan-May	373,461	4,097	20,391	368,808	94.5	5.5	373,578
1995	Jan-May p	398,509	4,288	7,487	378,244	98.0	2.0	379,059
Per cent change		+6.7	+4.7	-63.3	+2.6			+1.5
1994	Mar	78,128	793	4,276	77,308	94.5	5.5	78,228
	Apr	67,124	809	4,072	65,854	93.8	6.2	66,854
	May	50,822	724	3,659	49,740	92.6	7.4	50,587
Total		196,074	2,326	12,007	192,902	93.8	6.2	195,669
1995	Mar	90,234 r	936	2,137	86,689	97.5	2.5	86,428
	Apr	66,457	750	1,113	62,365	98.2	1.8	63,322
	May p	56,521	858	742	52,034	98.6	1.4	52,032
Total		213,212	2,544	3,992	201,088	98.0	2.0	201,782
Per cent change		+8.7	+9.4	-66.8	+4.2			+3.1

1. Includes waste and own use for drilling, production and pumping operations but excludes gas flared. 2. Gas available for consumption in the UK. It excludes waste, own use, gas flared and stock change. Includes net imports. 3. Gas input into inland transmission systems. It includes public gas supply, direct supply by North Sea producers, third party supplies, and stock changes. Figures differ from gas available for consumption in the UK mainly because of stock changes. The figures also differ from total consumption (expressed in oil equivalent in table 2) because they exclude producers' and operators' own use and losses.

TABLE 9. Natural gas consumption^{1,2}

GWh

		Total	Electricity generators ³	Iron and steel industry	Other industries	Domestic	Other ⁴
1990r		557,427	6,404	13,594	151,799	300,410	85,220
1991r		600,323	6,561	12,565	146,723	333,963	100,511
1992r		597,516	17,894	13,908	136,981	330,101	98,632
1993r		671,705	81,778	15,577	136,527	340,162	97,661
1994r		711,432	114,574	20,327	153,844	329,710	92,977
Per cent change		+5.9	+40.1	+30.5	+12.7	-3.1	-4.8
1993r	1st quarter	219,303	13,939	4,487	40,246	124,975	35,656
	2nd quarter	126,087	19,057	3,602	29,627	54,276	19,525
	3rd quarter	100,874	21,067	3,359	27,032	37,173	12,243
	4th quarter	225,441	27,715	4,129	39,622	123,738	30,237
1994r	1st quarter	244,887	30,579	5,319	44,525	131,225	33,239
	2nd quarter	149,652	25,836	4,792	36,294	62,963	19,767
	3rd quarter	108,817	28,285	5,324	28,975	32,518	13,715
	4th quarter	208,076	29,874	4,892	44,050	103,004	26,256
1995	1st quarter p	257,818	34,507	3,594	47,319	134,431	37,967
Per cent change		+5.3	+12.8	-32.4	+6.3	+2.4	+14.2

1. Gas consumption is generally less than gas transmitted (Table 8) on an annual basis because of own use and losses in transmission. 2. Includes natural gas sales to the non-tariff sector by independent gas suppliers. 3. For coverage of electricity generators see definitions below Table 23 (see also Technical note on page 2 in the July 1992 issue). 4. Public administration, commerce and agriculture.

PETROLEUM

TABLE 10. Drilling activity¹

Number of wells started

	Offshore				Onshore	
	Exploration	Appraisal	Exploration & appraisal	Development ²	Exploration & appraisal	Development
1990	159	65	224	124	13	23
1991	107	79	186	144	11	3
1992	74	57	131	167	6	8
1993	51	59	110	162	2	9
1994	62	37	99	202	3	13
Per cent change	+21.6	-37.3	-10.0	+24.7	+50.0	+44.4
1993 1st quarter	13	18	31	38	1	2
2nd quarter	6	14	20	44	—	1
3rd quarter	10	16	26	35	1	4
4th quarter	22	11	33	45	—	2
1994 1st quarter	12	6	18	44	1	1
2nd quarter	13	10	23	50	1	3
3rd quarter	19	7	26	59	1	4
4th quarter	18	14	32	49	—	5
1995 1st quarter	10	6	16	71	—	5
2nd quarter p	19	13	32	50	—	2
Per cent change	+46	+30	+39	—	-100	-34

1. Including sidetracked wells. 2. Development wells are production and appraisal wells drilled after development approval has been granted.

TABLE 11. Value of, and investment in, UKCS oil and gas production

£ million

	Total income ¹	Operating costs	Exploration expenditure	Gross trading profits (net of stock appreciation)	Percentage contribution to GDP ²	Capital investment	Percentage contribution to industrial investment ³
1990	12,024	2,892	1,637	7,040	1.7	3,560	15
1991	12,128	3,301	1,955	6,433	1.5	5,126	21
1992	12,153	3,316	1,508	6,716	1.5	5,418	22
1993	13,850	3,661	1,213	8,112	1.7	4,664	20
1994	15,938	3,866	939	9,720	2.0	3,546	16
Per cent change	+15.1	+5.6	-22.6	+19.8	—	-30.0	—
1993 1st quarter	3,620	840	298	2,272	2.0	1,230	21
2nd quarter	2,843	899	267	1,440	1.3	1,333	23
3rd quarter	3,173	921	306	1,713	1.5	1,119	19
4th quarter	4,206	998	342	2,688	2.2	982	16
1994 1st quarter	3,987	905	211	2,588	2.1	730	14
2nd quarter	3,786	941	225	2,261	1.9	938	18
3rd quarter	3,568	988	234	1,990	1.6	956	17
4th quarter	4,604	1,031	269	2,882	2.2	922	15
1995 1st quarter p	5,002	918	220	3,439	—	905	—
Per cent change	+25.5	+1.4	+4.3	+32.9	—	+23.9	—

1. Includes sales of crude oil, NGLs and natural gas plus other income associated with oil and gas production. 2. Contribution of sector to GDP at factor cost. 3. Investment by energy, water supply and the manufacturing sectors.

TABLE 12. Indigenous production, refinery receipts, arrivals and shipments

	Indigenous production ¹			Refinery receipts			Foreign trade ^{6,7}						
							Crude oil and NGLs		Process oils		Petroleum products		
	Total	Crude oil	NGLs ²	Indigenous ³	Other ⁴	Net foreign arrivals ⁵	Arrivals	Shipments	Arrivals	Shipments	Arrivals	Shipments	Bunkers ⁸
	Million tonnes						Thousand tonnes						
1990	91.6	88.0	3.6	37,754	916	51,065	42,074	54,131	10,636	1,769	11,005	18,002	2,538
1991	91.3	86.8	4.4	35,932	772	55,819	45,800	52,565	11,284	1,237	10,140	20,677	2,486
1992	94.3	89.2	5.1	35,472	832	56,485	46,753	54,779	10,930	1,198	10,567	21,899	2,546
1993	100.1	94.0	6.1	36,680	852	59,868	50,601	60,556	11,100	1,834	10,064	24,890	2,478
1994	126.7	119.0	7.7	42,174	427	51,170	42,898	77,899	10,198	1,926	10,441	24,644	2,313
Per cent change	+26.6	+26.6	+26.2	+15.0	-49.8	-14.5	-15.2	+28.6	-8.1	+5.0	+3.7	-1.0	-6.7
1994 Jan-May	50.9	47.7	3.2	16,976	77	22,261	18,294	31,541	4,537	569	4,171	10,167	963
1995 Jan-May p	55.2	51.5	3.7	17,196	203	18,703	16,314	33,519	3,133	742	4,257	8,744	977
Per cent change	+8.4	+8.0	+15.6	+1.3	+163.2	-16.0	-10.8	+6.3	-30.9	+30.3	+2.1	-14.0	+1.5
1994 Mar	10.5	9.8	0.7	3,026	12	4,712	3,952	6,827	857	97	1,030	1,736	189
Apr	10.3	9.7	0.6	3,274	97	4,096	3,296	6,640	903	104	767	1,969	204
May	10.4	9.8	0.6	4,187	8	4,838	3,875	5,572	1,039	75	767	2,345	191
Total	31.2	29.3	1.9	10,487	117	13,646	11,123	19,038	2,799	276	2,564	6,050	584
1995 Mar	11.6	10.8	0.8	3,670	120	3,271	3,008	7,310	491	227	915	1,874	192
Apr	11.2	10.5	0.7	3,691	-8	3,491	2,821	6,696	791	122	911	1,759	224
May p	10.5	9.8	0.7	3,165	16	4,505	3,680	6,221	886	59	792	1,575	207
Total	33.3	31.1	2.2	10,526	128	11,267	9,509	20,228	2,168	408	2,617	5,208	623
Per cent change	+6.9	+6.3	+14.9	+0.4	+9.5	-17.4	-14.5	+6.2	-22.5	+47.9	+2.1	-13.9	+6.7

1. Includes for convenience offshore and land production. 2. Condensates and petroleum gases derived at onshore treatment plants. 3. Crude oil plus NGLs. 4. Mainly recycled products (backflows to refineries). 5. Total arrivals less refinery shipments of crude oil, NGL's and process oils (ie partly refined oils). 6. Foreign trade recorded by the Petroleum Industry and may differ from figures published in the Overseas Trade Statistics. 7. 1994 data are subject to further revision as additional information on arrivals of petroleum products becomes available. 8. International marine bunkers.

TABLE 13. Refinery throughput and output of petroleum products

Thousand tonnes

	Refinery use			Gases			Kerosene							
	Throughput of crude and process oil	Fuel	Losses/ (gains)	Total ¹ output of petroleum products	Butane and propane	Other petroleum	Naphtha (LDF)	Motor spirit	Aviation turbine fuel	Burning oil	Gas/ diesel oil	Fuel oil	Lubricating oils	Bitumen
1990	88,692	5,838	568	82,286	1,514	106	2,139	26,724	7,541	2,309	23,402	13,805	974	2,454
1991	92,001	6,058	467	85,476	1,664	134	2,515	27,793	7,037	2,446	26,057	13,205	973	2,302
1992	92,334	6,080	471	85,783	1,583	172	3,040	27,980	7,681	2,450	25,650	12,388	1,163	2,336
1993	96,274	6,383	308	89,584	1,575	162	2,696	28,394	8,341	2,707	27,361	13,183	1,264	2,450
1994	93,162	6,256	261	86,644	1,605	132	2,794	27,562	7,697	2,967	27,137	11,378	1,296	2,569
Per cent change	-3.2	-2.0	-15.3	-3.3	+1.9	-18.5	+3.6	-2.9	-7.7	+9.6	-0.8	-13.7	+2.5	+4.9
1994 Jan-May	38,641	2,635	177	35,829	689	46	1,213	11,513	3,161	1,432	10,938	4,715	540	997
1995 Jan-May p	36,357	2,591	11	33,755	761	57	1,187	10,469	2,941	1,336	10,714	4,168	545	948
Per cent change	-5.9	-1.7	-93.8	-5.8	+10.4	+23.9	-2.1	-9.1	-7.0	-6.7	-2.0	-11.6	+0.9	-4.9
1994 Mar	7,342	517	6	6,819	131	7	224	2,188	517	382	2,088	839	96	226
Apr	7,753	523	69	7,161	138	12	246	2,292	671	262	2,139	966	113	206
May	8,504	550	-2	7,957	177	12	246	2,491	811	148	2,530	1,027	118	273
Total	23,598	1,590	72	21,937	446	30	716	6,971	1,999	792	6,757	2,832	327	705
1995 Mar	7,852	551	31	7,270	155	12	238	2,274	597	338	2,296	867	119	240
Apr	6,842	492	-23	6,374	158	13	228	1,984	615	214	1,956	753	120	201
May p	7,343	497	-1	6,848	167	9	210	2,113	636	188	2,109	970	93	219
Total	22,037	1,540	5	20,492	480	33	675	6,370	1,849	741	6,361	2,590	333	659
Per cent change	-6.6	-3.1	-93.1	-6.6	+7.6	+10.0	-5.7	-8.6	-7.5	-6.4	-5.9	-8.5	+1.8	-6.5

1. Including aviation spirit, wide cut gasoline industrial and white spirit, petroleum wax and miscellaneous products.

TABLE 14. Deliveries of petroleum products for inland consumption^{1,2}

Thousand tonnes

		Total ^{1,2,3}	Butane ⁴ and propane	Naphtha ⁵ (LDF) and Middle distillate feedstock	Motor Spirit		Kerosene			Gas/diesel oil		Fuel oil ⁶	Ori- mulsion	Bitumen	Lubri- cating oils
					Total	of which Unleaded	Aviation turbine fuel	Burning oil		Derv fuel	Other				
								Premier	Standard domestic						
1990		73,943	1,969	3,477	24,312	8,255	6,589	41	1,526	10,652	8,046	11,842	155	2,491	822
1991		74,506	2,273	3,898	24,021	9,868	6,176	45	1,779	10,694	8,031	11,530	418	2,514	759
1992		75,470	1,890	3,965	24,044	11,268	6,666	39	1,875	11,132	7,871	10,195	1,286	2,555	786
1993		75,790	1,992	3,777	23,766	12,503	7,106	35	2,002	11,806	7,782	9,354	1,416	2,523	806
1994		74,957	2,486	3,525	22,843	13,162	7,284	29	2,029	12,914	7,491	8,048	1,227	2,595	795
Per cent change		-1.1	+24.8	-6.7	-3.9	+5.3	+2.5	-17.1	+1.3	+9.4	-3.7	-14.0	-13.3	+2.9	-1.4
1994	Jan-May	31,020	968	1,452	9,264	5,198	2,746	17	1,048	5,090	3,343	3,680	550	1,023	324
1995	Jan-May p	30,662	1,051	1,655	8,853	5,426	2,810	13	1,001	5,425	3,216	3,157	480	951	370
Per cent change		-1.2	+8.6	+14.0	-4.4	+4.4	+2.3	-23.5	-4.5	+6.6	-3.8	-14.2	-12.8	-7.0	+14.2
1994	Mar	6,895	169	296	2,010	1,128	549	4	360	1,153	769	749	115	276	69
	Apr	6,014	195	292	1,891	1,070	554	3	109	1,013	609	718	85	198	64
	May	6,105	202	262	1,910	1,083	645	1	85	1,037	562	686	152	241	68
Total		19,014	566	850	5,811	3,281	1,748	8	554	3,203	1,940	2,153	352	715	201
1995	Mar	6,787	237	346	1,929	1,185	549	3	262	1,239	758	659	112	229	82
	Apr	5,835	229	281	1,778	1,093	573	2	156	1,047	556	476	146	171	71
	May p	6,019	201	272	1,860	1,152	669	1	123	1,133	560	484	87	235	79
Total		18,641	667	899	5,567	3,430	1,791	6	541	3,419	1,874	1,619	345	635	232
Per cent change		-2.0	17.8	+5.8	-4.2	+4.5	+2.5	-25.0	-2.3	+6.7	-3.4	-24.8	-1.9	-11.2	+15.4

1. Including other petroleum gases, aviation spirit, industrial and white spirits, petroleum wax, non-domestic standard burning oil and miscellaneous products. 2. 1994 data are subject to further revision as additional information on arrivals of petroleum products contributes to deliveries. 3. Excluding refinery fuel. 4. Including amounts for petro-chemicals. 5. Mainly for petro-chemical feedstock. 6. Excludes Orimulsion.

TABLE 15. Deliveries of petroleum products for inland consumption: energy uses¹

Thousand tonnes

	Total	Electricity ²	Gas works	Iron and Steel ²	Other ²	Transport ³	Domestic	Other ⁴
		generators		industry	industries			
1990	64,774	7,201 r	52	701	7,032 r	43,454	2,219	4,117
1991	64,553	6,762 r	50	703	7,486 r	42,864	2,522	4,166
1992	64,839	6,405 r	42	676	7,134 r	43,789	2,579	4,212
1993	65,065	5,522 r	44	887 r	7,173 r	44,569	2,714	4,157 r
1994	63,780	3,831	50	887	7,470	44,830	2,701	4,010
Per cent change	-2.0	-30.6	+14.6	—	+4.1	+0.6	-0.5	-3.5
1994 Jan-Apr	21,465	1,560	26	258	2,734	14,101	1,208	1,578
1995 Jan-Apr p	20,812	1,438	20	264	2,496	14,016	1,112	1,467
Per cent change	-3.0	-7.8	-23.2	+2.4	-8.7	-0.6	-8.0	-7.1
1994 Feb	5,263	397	6	70	728	3,323	339	400
Mar	5,934	412	5	58	733	3,874	427	425
Apr	5,135	402	4	61	546	3,601	165	357
Total	16,332	1,210	15	189	2,007	10,798	930	1,183
1995 Feb	5,135	460	5	57	638	3,334	284	357
Mar	5,733	371	5	57	683	3,884	326	407
Apr p	4,892	325	4	50	468	3,532	209	303
Total	15,759	1,110	13	164	1,834	10,751	820	1,066
Per cent change	-3.5	-8.3	-10.1	-13.2	-8.6	-0.4	-11.8	-9.9

1. 1994 data are subject to further revision as additional information on arrivals of petroleum products contributes to deliveries for energy uses. 2. For coverage of electricity generators see definitions below Table 23 (see also Technical notes on page 2 of July 1992 issue). 3. Includes coastal shipping and fishing. 4. Mainly public administration, commerce and agriculture.

TABLE 16. Stocks of petroleum¹ at end of period

Thousand tonnes

	Crude oil and refinery process oil				Petroleum products					Total Stocks		
	Refineries ²	Terminals ³	Offshore ⁴	Total	Light ⁵ distillates	Kerosene & gas/diesel ⁶	Fuel oils ⁷	Other products ⁸	Total pet prod	Net bilaterals ⁹	Stocks in UK ¹⁰	Total stock
1990	5,484	982	494	6,960	2,424	3,039	3,206	1,224	9,892	1,539	15,313	16,852
1991	5,379	1,383	369	7,131	2,663	3,092	3,578	1,394	10,727	1,727	16,131	17,858
1992	5,699	1,178	482	7,358	2,502	2,716	3,488	1,394	10,100	1,964	15,494	17,458
1993	5,573	1,642	457	7,671	2,734	2,906	3,346	1,419	10,406	2,024	16,053	18,077
1994	5,402	1,720	428	7,651	2,515	2,650	2,884	1,464	9,513	1,543 ⁽¹¹⁾	15,620	17,163
Per cent change	-3.1	+4.8	-6.3	-0.3	-8.0	-8.8	-13.8	+3.2	-8.6	-23.8	-2.7	-5.1
1994 Mar	5,522	1,513	476	7,510	2,601	2,398	2,996	1,233	9,228	1,765	14,973	16,738
Apr	5,458	1,290	594	7,443	2,181	2,532	2,856	1,181	8,750	1,284	14,909	16,193
May	5,935	1,342	584	7,961	2,307	2,804	3,002	1,275	9,389	1,387	15,962	17,349
1995 Mar	4,845	1,347	429	6,721	2,564	2,499	2,748	1,437	9,249	1,703 ⁽¹¹⁾	14,267	15,970
Apr	5,494	1,031	470	7,095	2,390	2,384	2,849	1,522	9,145	1,540 ⁽¹¹⁾	14,700	16,240
May p	5,595	1,273	475	7,443	2,260	2,372	2,944	1,534	9,111	1,361 ⁽¹¹⁾	15,193	16,554
Per cent change	-5.7	-5.1	-18.7	-6.5	-2.0	-15.4	-1.9	+20.3	-3.0	-1.9	-4.8	-4.6

1. Stocks held at refineries, terminals and power stations. Stocks in the wholesale distribution system and certain stocks at offshore fields (UK Continental Shelf [UKCS]), and others held under approved bilateral agreements are also included. 2. Stocks of crude oil, NGLs and process oil at UK refineries. 3. Stocks of crude oil and NGLs at UKCS pipeline terminals. 4. Stocks of crude oil in tanks and partially loaded tankers at offshore fields (UKCS). 5. Motor spirit and aviation spirit. 6. Aviation turbine fuel, burning oil, gas oil, DERV fuel, middle distillate feedstock (mdf) and marine diesel oil. 7. Including Orimulsion. 8. Ethane, propane, butane, other petroleum gases, naphtha (ldf), industrial and white spirits, bitumen, petroleum wax, lubricating oil, petroleum coke and miscellaneous products. 9. The difference between stocks held abroad for UK use under approved bilateral agreements and the equivalent stocks held in the UK for foreign use. 10. Stocks held in the national territory or elsewhere on the UKCS. 11. From April 1994 includes 100 thousand tonnes held under approved bilateral agreements.

ELECTRICITY

TABLE 17. Electricity generation, supply and availability

TWh

	Major power producers ¹			Other generators ¹			All generating companies				
	Electricity generation	Own use ²	Electricity supplied (net)	Electricity generation	Own use ²	Electricity supplied (net)	Electricity generation	Own use ²	Electricity supplied (net)	Net imports	Electricity available
1990	298.50	20.52	277.98	21.24 r	1.72	19.52 r	319.74 r	22.24	297.50 r	11.94	309.44 r
1991	301.49	20.53	280.96	21.37 r	1.69	19.69 r	322.86 r	22.22	300.64 r	16.41	317.05 r
1992	300.18	20.74	279.44	20.85 r	1.75	19.10 r	321.02 r	22.49	298.53 r	16.69	315.22 r
1993	300.51	19.34	281.17	22.57 r	1.90	20.67 r	323.08 r	21.24	301.85 r	16.72	318.56 r
1994	302.81 r	17.97 r	284.84 r	22.58 r	1.58 r	20.99 r	325.38 r	19.55 r	305.83 r	16.89	322.72 r
Per cent change	+0.8 r	-7.1 r	+1.3	-r	-16.5 r	+1.6 r	+0.7 r	-7.9 r	+1.3 r	+1.0	+1.3 r
1992 4th quarter	81.73	5.58	76.15	5.71 r	0.40	5.31 r	87.43 r	5.98	81.45 r	4.30	85.76 r
1993 1st quarter	84.98	5.68	79.30	5.97 r	0.64	5.33 r	90.95 r	6.32	84.63 r	4.28	88.91 r
2nd quarter	67.31	4.42	62.88	5.47 r	0.35 r	5.12 r	72.77 r	4.77 r	68.01 r	4.02	72.03 r
3rd quarter	65.04	4.14	60.90	5.25 r	0.57	4.67 r	70.29 r	4.71	65.58 r	4.11	69.68 r
4th quarter	83.18	5.10	78.08	5.88 r	0.34	5.55 r	89.07 r	5.44	83.63 r	4.30	87.93 r
1994 1st quarter	85.69 r	5.00	80.69 r	6.29 r	0.45 r	5.84 r	91.98 r	5.45 r	86.53 r	4.29	90.82 r
2nd quarter	70.01 r	4.28 r	65.73 r	5.27 r	0.38 r	4.89 r	75.28 r	4.66 r	70.61 r	4.02	74.64 r
3rd quarter	66.10 r	4.06 r	62.04	5.07 r	0.41	4.66 r	71.18 r	4.48 r	66.70 r	4.22	70.93 r
4th quarter	81.01 r	4.63 r	76.38 r	5.94 r	0.34 r	5.60 r	86.95 r	4.97 r	81.98 r	4.35	86.33 r
1995 1st quarter	87.61 r	4.88 r	82.73	5.57	0.43	5.14	93.18 r	5.31 r	87.87	4.36	92.24
Per cent change	+2.2 r	-2.4 r	+2.5 r	-11.5 r	-5.0 r	-12.0 r	+1.3 r	-2.6 r	+1.6 r	+1.6	1.6 r

1. See definitions below Table 23. 2. Used in works and for pumping at pumped storage stations.

TABLE 18. Electricity supplied by other generating companies

GWh

	Industry									
	Electricity supplied (net) Total	Total industry	Nuclear power stations ¹	Petroleum refineries	Iron and steel	Chemicals	Engineering and other metal trades	Food, drink and tobacco	Paper, printing and stationery	Other ^{2,3}
1990	19,524 r	18,869 r	3,700	2,469 r	1,643	4,228 r	3,947 r	598 r	867 r	1,415 r
1991	19,686 r	19,038 r	3,496	2,536 r	1,780	4,242 r	3,974 r	611 r	952 r	1,448 r
1992	19,095 r	18,448 r	2,866	2,728 r	1,790	3,828 r	3,699 r	676 r	998 r	1,862 r
1993	20,670 r	19,911 r	4,141	2,754	1,752	4,156 r	3,461 r	725 r	1,253 r	1,669 r
1994	20,993 r	20,287 r	3,530 r	2,932 r	1,693	4,258 r	3,620 r	771 r	1,300 r	2,163
Per cent change	+1.6 r	+1.9 r	-14.3 r	+6.5 r	-3.4	+2.5 r	+4.6 r	+6.3 r	+3.7 r	+29.6 r
1992 4th quarter	5,313 r	5,137 r	730	771 r	456	1,026 r	1,065 r	293	233	562 r
1993 1st quarter	5,327 r	5,128 r	970	656	461	1,143 r	956 r	195 r	314 r	433 r
2nd quarter	5,123 r	4,936 r	1,155	671	419	990 r	859 r	104 r	276 r	463 r
3rd quarter	4,674 r	4,488 r	838	732	416	957 r	759 r	108 r	316 r	363 r
4th quarter	5,546 r	5,360 r	1,178	695	457	1,066 r	887 r	318 r	348 r	410 r
1994 1st quarter	5,843 r	5,653 r	1,288 r	775 r	439	1,066 r	973 r	244 r	293 r	575 r
2nd quarter	4,885 r	4,704 r	703 r	706 r	451	1,026 r	908 r	115 r	270 r	525 r
3rd quarter	4,663 r	4,505 r	754 r	650 r	401	1,017 r	776 r	108 r	295 r	504 r
4th quarter	5,602 r	5,425 r	805 r	801 r	402	1,149 r	963 r	304 r	442 r	559 r
1995 1st quarter p	5,139	4,942	776	674	445	1,014	925	296	384	428
Per cent change	-12.0 r	-12.6 r	-39.8 r	-13.0 r	+1.4	-4.9 r	-4.9 r	+21.3 r	+31.1 r	-25.6 r

1. Generated by UKAEA and British Nuclear Fuels (BNF) for the public electricity supply system. The UKAEA has ceased to contribute with the closure of its power station in 1994. 2. Including water-works and companies within the service sector. 3. Includes electricity supplied from renewable sources that cannot be attributed to any of the other industrial groups.

TABLE 19. Electricity production and availability from the public supply system¹

TWh

Electricity supplied (net) by type of plant														
Conventional steam plant													Purchases from other sources (net) ^{8,9}	Total electricity available ⁹
Electricity generated	Own use ²	Total	Total conventional steam	Coal ³	Oil	Other conventional steam ⁴	CCGT ⁵	Nuclear	Hydro ⁶	Other ⁷	Net imports			
1990	298.50	20.52	277.98	218.96	196.62	14.53	7.81	—	54.96	3.65	0.41	11.94	5.36	295.28
1991	301.49	20.53	280.96	217.95	184.04	18.51	17.42	0.31	59.26	3.12	0.31	16.41	5.05	302.41
1992	300.18	20.74	279.44	205.90	169.56	10.46	25.87	2.96	66.27	3.96	0.35	16.69	5.27	301.40
1993	300.51	19.34	281.17	178.31	144.03	8.30	25.97	22.61	76.84	2.95	0.46	16.72	7.31	305.20
1994	302.81 r	17.97 r	284.84 r	167.29 r	137.80 r	6.21 r	23.28 r	36.82 r	76.41 r	3.63	0.69 r	16.89	7.40 r	309.12 r
Per cent change	+0.8 r	-7.0 r	+1.3	-6.2 r	-4.3 r	-25.3 r	-10.4 r	+71.7 r	-0.6	+22.9	+49.9 r	+1.0	+1.2 r	+1.3 r
1994 Jan-May	130.59	7.71	122.88	74.77	60.79	3.15	10.83	14.71	31.10	2.02	0.28	6.93	3.37	133.18
1995 Jan-May	132.87	7.55	125.32	74.99	60.96	2.29	11.75	17.54	30.41	2.12	0.25	6.90	2.68	134.90
Per cent change	+1.7	-2.0	+2.0	+0.3	+0.3	-27.5	+8.5	+19.2	-2.2	+4.5	-8.2	-0.3	-20.4	+1.3
1994 Mar	31.12	1.80	29.32 r	17.92	14.85	0.55	2.53	3.54	7.21	0.59	0.06	1.66	0.89 r	31.87 r
Apr	23.40 r	1.36 r	22.05	13.00	10.84	0.43	1.74	2.77	5.76	0.45	0.06	1.34	0.51 r	23.90 r
May	21.50	1.35	20.15	11.17	9.29	0.34	1.55	2.36	6.25	0.30	0.06	1.30	0.51	21.95
Total	76.02	4.51	71.51	42.10	34.97	1.31	5.81	8.68	19.21	1.34	0.18	4.29	1.92	77.72
1995 Mar	32.52 r	1.85 r	30.67	19.37	15.64	0.60	3.13	3.77	6.95	0.53	0.05	1.70	0.65	33.01
Apr	23.25 r	1.38 r	21.86	11.88	9.89	0.23	1.76	3.01	6.53	0.40	0.05	1.33	0.47	23.66
May p	22.01	1.29	20.72	11.33	9.39	0.24	1.70	3.52	5.67	0.15	0.05	1.21	0.46	22.40
Total	77.77	4.52	73.25	42.57	34.93	1.07	6.88	10.30	19.15	1.08	0.14	4.24	1.58	79.07
Per cent change	+2.3	+0.3	+2.4	+1.1	-0.1	-18.9	+13.2	+18.7	-0.3	-19.8	-21.2	-1.1	-17.7	+1.7

1. Electricity generated by major power producers (see definitions below Table 23) and available through the grid in England and Wales and from distribution companies in Scotland and Northern Ireland. 2. Used in works and for pumping at pumped storage stations. 3. Including Slurry. 4. Mixed and dual fired including sour gas and Orimulsion. 5. Combined Cycle Gas Turbine Stations. 6. Natural flow and net supply by pumped storage stations. 7. Including diesel and oil engines, gas turbines and wind power. 8. Purchases from the UKAEA, BNF and other generators. 9. Net of supplies direct from generators to final consumers.

TABLE 20. Fuel used in electricity generation

Million tonnes of oil equivalent

	Major power producers ¹				Other generators ¹				All generating companies						
	Coal	Nuclear	Other ²	Total	Coal	Nuclear	Other ²	Total	Coal	Oil	Gas	Nuclear	Hydro	Other	Total ³
1990	48.9r	15.1	7.2r	71.2r	1.0r	1.2	3.0r	5.2r	49.8r	8.4r	0.6	16.3	0.4	0.8r	76.3r
1991	49.0r	16.3	6.2	71.5r	1.0	1.1	3.3r	5.4r	50.0r	7.6r	0.6	17.4	0.4	0.9r	76.9r
1992	46.0	17.5	6.3r	69.8r	1.0r	1.0	4.8	6.7	46.9	8.1r	1.5r	18.5	0.5	1.1	76.6r
1993	38.3	20.2	11.0	69.5	1.3	1.3	3.1r	5.8r	39.6r	5.8r	7.0r	21.5	0.4	1.0r	75.3r
1994	35.9r	20.1r	13.2r	69.2r	1.2	1.2r	2.2r	4.5r	37.1r	4.1r	9.9r	21.2	0.4	1.1r	73.7r
Per cent change	-6.1	-0.6	+19.8r	-0.4r	-9.9	-12.3	-31.3	-22.0r	-6.2r	-28.7r	+40.0r	-1.3r	+17.8	+5.5	-2.1
1992 4th quarter	12.1	4.6	2.2r	18.9r	0.3	0.2	1.2	1.7	12.4	2.2r	0.8	4.8	0.1	0.3	20.6r
1993 1st quarter	11.7	5.5	2.3	19.6	0.3	0.3	1.0r	1.7r	12.1	1.7	1.2r	5.8	0.1	0.3	21.3r
2nd quarter	8.5	4.7	2.5	15.6	0.3	0.4	0.8r	1.5r	8.8	1.3	1.6r	5.0	0.1	0.3	17.1r
3rd quarter	7.9	4.7	2.6	15.2	0.3	0.3	0.7r	1.3r	8.2	1.3r	1.8r	4.9	0.1	0.2r	16.5r
4th quarter	10.1	5.3	3.6	19.1	0.4r	0.4	0.6r	1.3r	10.5	1.5r	2.4r	5.7	0.1	0.2r	20.4r
1994 1st quarter	10.7r	5.0	3.7	19.5r	0.3	0.4	0.6r	1.3r	11.0r	1.4r	2.6r	5.4	0.1	0.3	20.8r
2nd quarter	8.0r	5.1	3.0	16.1	0.3	0.2	0.6r	1.2r	8.3r	1.1r	2.2	5.3	0.1	0.3	17.3r
3rd quarter	7.4r	4.9	3.0r	15.3	0.3	0.3	0.5r	1.0r	7.7r	0.7r	2.4	5.1	0.1	0.3	16.3r
4th quarter	9.8	5.1	3.5	18.3r	0.3	0.3	0.4r	1.0r	10.1	1.0r	2.6r	5.3	0.1	0.2r	19.4r
1995 1st quarter	10.9	4.8	3.9	19.6r	0.3	0.3	0.8	1.4	11.2r	1.3	3.0	5.0	0.2	0.3	21.0r
Per cent change	+1.3	-4.8r	+5.5	+0.5r	+20.3	-37.2r	-28.1	-6.1r	+1.8r	-6.7r	+13.7r	-7.3r	+22.6	+36.4r	+0.9r

1. See definitions below Table 23. 2. Oil, including oil used in gas turbine and diesel plant or for lighting up coal fired boilers, and Orimulsion, hydro, gas, wind and refuse derived fuel. 3. Does not include imports of electricity from France.

TABLE 21. Fuel used in electricity generation by major power producers¹

Million tonnes of oil equivalent

	Total ²	Coal ³	Oil ^{3,4}	Gas ⁵	Nuclear	Hydro
1990	71.16r	48.87r	6.84r	0.01	15.06	0.38
1991	71.46r	48.96r	5.85r	0.02r	16.30	0.32
1992	69.83r	45.96r	4.96r	1.00r	17.50	0.39
1993	69.47r	38.26	4.41	6.27	20.17	0.30
1994	69.18	35.90r	3.58	9.08r	20.05r	0.37
Per cent change	-0.4r	-6.2r	-18.7	+45.0r	-0.6	+21.4
1994 Jan-May	29.75	15.94	1.76	3.65	8.17	0.19
1995 Jan-May	29.81	15.78	1.46	4.33	7.98	0.21
Per cent change	+0.2	-1.0	-17.0	+18.5	-2.3	+6.8
1994 Mar	6.98r	3.88r	0.33	0.81	1.89	0.05
Apr	5.31r	2.80r	0.28	0.66	1.51	0.04
May	4.97r	2.40	0.23	0.66	1.64	0.03
Total	17.26r	9.08	0.85	2.14	5.04	0.13
1995 Mar	7.23r	4.08r	0.38	0.89	1.82	0.05
Apr	5.24r	2.50r	0.18	0.79	1.71	0.04
May p	4.99	2.40	0.20	0.88	1.49	0.02
Total	17.46	8.98	0.76	2.56	5.03	0.11
Per cent change	+1.2	-1.1	-10.4	+19.5	-0.3	-15.2

1. See definitions below Table 23. 2. Including wind power, refuse derived fuel and other renewables. 3. Including quantities used in the production of steam for sale. 4. Including oil used in gas turbine and diesel plant or for lighting up coal fired boilers, and Orimulsion. 5. Including sour gas, refinery gas, etc.

TABLE 22. Availability and consumption of electricity

TWh

	Public distribution system							Other generators			All electricity suppliers		
	Electricity available	Transmission distribution and other losses ¹	Sales of electricity to consumers					Electricity available ⁵	Losses and statistical differences	Consumption of electricity ⁶	Electricity available	Losses and statistical differences	Consumption of electricity
			Total	Industrial ²	Commercial ³	Domestic	Other ⁴						
1990	295.28	23.96	271.32	98.17	70.96	93.79	8.40	14.16r	1.06r	13.10	309.40	24.98	284.42
1991	302.41	24.67	277.75	96.87	74.58	98.10	8.20	14.64r	1.55r	13.09	317.00	26.16	290.84
1992	301.40	22.97	278.43	92.84	77.89	99.48	8.22	13.83r	0.81r	13.02	315.16	23.71	291.45
1993	305.20	22.20r	283.00r	94.59r	79.89r	100.46r	8.07r	13.36r	0.61r	12.75r	318.56r	22.81r	295.75r
1994 p	309.12r	24.68r	284.44r	94.73r	80.86r	100.64r	8.21r	13.59r	1.83r	11.76r	322.72r	26.52r	296.20r
Per cent change	+1.3r	+11.2r	+0.5r	+0.1r	+1.2r	-0.2r	+1.8r	+1.8r	(+)	-7.7	+1.3	+16.2	+0.2r
1992 4th quarter	81.99	6.36	75.63	23.09	20.81	29.35	2.38	3.77r	0.25r	3.52	85.76r	6.62r	79.14r
1993 1st quarter	85.40	7.98r	77.42r	23.82r	21.53r	30.05r	2.02	3.52r	0.16r	3.36r	88.91r	8.13r	80.77r
2nd quarter	68.79	4.26r	64.53r	23.06r	18.22r	21.56r	1.69r	3.24r	0.19r	3.06r	72.03r	4.44r	67.59r
3rd quarter	66.51	4.37r	62.14r	23.12r	18.05r	19.09r	1.88r	3.17r	0.18r	2.99r	69.68r	4.56r	65.13r
4th quarter	84.51	5.58r	78.93r	24.60r	22.09r	29.76r	2.48	3.42r	0.08r	3.34r	87.93r	5.66r	82.27r
1994 1st quarter	87.33r	7.72r	79.61r	24.84r	21.33r	31.31r	2.14r	3.48r	0.49r	2.99r	90.81r	8.20r	82.60r
2nd quarter	71.39r	5.40r	65.99r	23.84r	19.29r	21.06r	1.79r	3.27r	0.43r	2.84r	74.65r	5.82r	68.82r
3rd quarter	67.81r	4.81r	63.00r	22.16r	19.13r	19.83r	1.88r	3.14r	0.39r	2.75r	70.95r	5.20r	65.75r
4th quarter	82.60r	6.75r	75.84r	23.89r	21.11r	28.45r	2.40r	3.71r	0.52r	3.18r	86.30r	7.28r	79.03r
1995 1st quarter	87.03r	5.07	81.90r	25.59	22.07r	31.85r	2.45r	3.39	0.24	3.15	90.41r	5.31	85.11r
Per cent change	-0.3r	-34.3r	+2.9r	+3.1r	+3.5r	+1.7r	+14.2r	-2.6	-51.6	+5.4	-0.4r	-35.3r	+3.0r

1. Losses on the grid system and local networks and other differences between data collected on sales and data collected on availability. The increases in losses and statistical differences in 1994 reflect the temporary reduction in data quality accompanying the metering and billing procedures that followed the reduction of the franchise limit from 1MW to 100kW in April 1994. 2. Manufacturing industry, construction, energy and water supply industries. 3. Commercial premises, transport and other service sector consumers. 4. Agriculture, public lighting and combined domestic/commercial premises. 5. Net electricity supplied less transfers to the public distribution system. 6. The majority of this consumption is by the industrial and fuel sectors (92% in 1994).

TEMPERATURES

TABLE 23. Average temperatures and deviations from the long term mean¹

Degrees Celsius

	Long term mean	Average daily temperature			Deviation from the long term mean		
	1961 to 1990	1993	1994	1995	1993	1994	1995
Statistical month²							
January	3.8	5.1	4.4	5.4	+1.3	+0.6	+1.6
February	4.0	6.0	4.5	6.3	+2.0	+0.5	+2.3
March*	5.4	5.8	6.4	5.6	+0.4	+1.0	+0.2
April	7.6	8.7	7.0	8.2	+1.1	-0.6	+0.6
May	10.2	10.6	11.1	10.1	+0.4	+0.9	-0.1
June*	13.4	13.8	12.8		+0.4	-0.6	
July	15.7	15.2	17.1		-0.5	+1.4	
August	15.9	15.1	16.8		-0.8	+0.9	
September*	14.0	13.0	13.5		-1.0	-0.5	
October	11.1	8.9	10.9		-2.2	-0.2	
November	7.6	6.9	10.2		-0.7	+2.6	
December*	4.9	4.7	7.3		-0.2	+2.4	
Year ³	9.5	9.5	10.2		—	+0.7	
Calendar month							
January	3.9	6.0	5.2	4.9	+2.1	+1.3	+1.0
February	3.9	5.4	3.5	6.7	+1.5	-0.4	+2.8
March	5.7	6.6	7.6	5.6	+0.9	+1.9	-0.1
April	7.8	9.3	8.1	8.9	+1.5	+0.3	+1.1
May	10.9	11.2	10.4	11.6	+0.3	-0.5	+0.7
June	13.9	14.4	14.3		+0.5	+0.4	
July	15.8	15.1	17.6		-0.7	+1.8	
August	15.6	14.4	16.3		-1.2	+0.3	
September	13.5	12.5	12.7		-1.0	-0.8	
October	10.6	8.5	10.2		-2.1	-0.4	
November	6.6	5.0	10.1		-1.6	+3.5	
December	4.7	5.3	6.4		+0.6	+1.7	
Year	9.5	9.5	10.2		—	+0.8	

1. Based on data provided by the Meteorological Office. Information on the methodology used is given in footnotes to Table 11 of the Digest of UK Energy Statistics 1994. 2. Months with 4 or 5 weeks. Months marked * contain 5 weeks. 3. Weighted average (based on 52 weeks).

DEFINITIONS AND ABBREVIATIONS

Electricity generators

Major power producers

— National Power, PowerGen, Nuclear Electric, National Grid Company, ScottishPower, Hydro-Electric, Scottish Nuclear, NIGEN, Coolkeeragh Power Ltd., Premier Power Ltd., Central Power, South Western Electricity, Teesside Power Ltd., Lakeland Power Ltd., Corby Power Ltd., Peterborough Power Ltd., Regional Power Ltd., Fibropower Ltd., Fibrogen Ltd., Fellside Heat and Power Ltd., Keadby Generation Ltd., Barking Power Ltd., Elm Energy & Recycling (UK) Ltd, South East London Combined Heat & Power Ltd.

BCC — British Coal Corporation

CHP — Combined heat and power

LDF — Light distillate feedstock

OTS — Overseas Trade Statistics of the United Kingdom

UKAEA — United Kingdom Atomic Energy Authority

BNF — British Nuclear Fuels plc

GDP — Gross domestic product

NGL — Natural gas liquids

UKCS — United Kingdom Continental Shelf

VAT — Value added tax

FOREIGN TRADE

TABLE 24. Imports and exports of fuels and related materials¹

		Coal and other solid fuel	Petroleum		Natural gas	Electricity	Total	Coal and other solid fuel	Petroleum		Natural gas	Electricity	Total	Total fob ³
			Crude	Products ²					Crude	Products ²				
Quantity – Million tonnes of oil equivalent							Value – £ million							
IMPORTS: (cif)														
1990		10.2	47.8	25.2	7.3	1.1	91.6	630	4,033	2,427	519	225	7,834	7,418
1991		13.5	50.1	24.0	6.5	1.4	95.5	734	3,887	2,063	472	343	7,500	7,165
1992		14.2	51.3	22.3	5.5	1.4	94.7	744	3,745	1,711	397	369	6,965	6,620
1993		13.0	53.6	21.8	4.3	1.4	94.2	731	4,078	1,766	327	426	7,328	6,997
1994 p		10.8	43.6	20.2	3.0	1.5	79.1	598	3,026	1,689	231	388	5,933	5,696
Per cent change		-16.8	-18.7	-7.4	-28.4	+0.8	-16.0	-18.1	-25.8	-4.3	-29.5	-8.9	-19.0	-18.6
1993	2nd quarter	3.0	13.9	4.8	1.2	0.3	23.3	170	1,116	402	97	105	1,891	1,815
	3rd quarter	3.4	13.1	5.5	0.6	0.4	23.1	186	963	438	50	107	1,743	1,659
	4th quarter	3.4	13.6	6.2	1.0	0.4	24.5	194	926	457	81	118	1,776	1,680
1994	1st quarter p	3.3	11.5	5.0	1.1	0.4	21.4	186	733	382	88	86	1,475	1,379
	2nd quarter p	2.5	10.9	4.9	1.0	0.3	19.6	141	753	399	78	87	1,458	1,371
	3rd quarter p	2.7	10.0	5.3	0.4	0.4	18.9	146	744	486	32	80	1,489	1,512
	4th quarter p	2.3	11.1	5.0	0.4	0.4	19.3	126	796	422	33	135	1,512	1,435
1995	1st quarter p	2.9	10.8	4.4	0.4	0.4	18.8	148	789	347	33	169	1,485	1,435
Per cent change		-13.2	-6.8	-13.3	-61.8	-4.0	-12.2	-20.6	+7.6	-9.2	-62.0	+96.1	+0.7	+4.1
EXPORTS: (fob)														
1990		1.9	59.2	22.5	—	0.1	83.6	119	5,172	2,455	—	25	7,771	7,771
1991		1.5	56.6	25.0	—	—	83.1	97	4,370	2,640	—	—	7,107	7,107
1992		0.8	58.6	26.1	—	—	85.5	63	4,413	2,401	2	—	6,879	6,879
1993		1.0	67.0	30.9	0.6	—	99.5	73	5,147	3,149	28	—	8,397	8,397
1994 p		1.2	85.9	30.1	1.0	—	118.1	75	6,062	2,776	45	—	8,959	8,959
Per cent change		+16.4	+28.2	-2.5	+67.3	—	+18.8	+2.8	+17.8	-11.8	+61.3	—	+6.7	+6.7
1993	2nd quarter	0.2	13.9	7.5	0.2	—	21.8	16	1,163	805	8	—	1,992	1,992
	3rd quarter	0.2	18.1	8.2	0.2	—	26.7	14	1,392	804	7	—	2,218	2,218
	4th quarter	0.4	20.5	7.6	0.2	—	28.6	22	1,399	737	11	—	2,168	2,168
1994	1st quarter p	0.4	21.3	7.1	0.2	—	29.0	22	1,362	625	11	—	2,020	2,020
	2nd quarter p	0.2	20.4	8.2	0.3	—	29.1	17	1,485	780	10	—	2,292	2,292
	3rd quarter p	0.2	21.4	7.5	0.2	—	29.4	14	1,591	682	11	—	2,298	2,298
	4th quarter p	0.4	22.7	7.3	0.3	—	30.6	22	1,625	689	13	—	2,349	2,349
1995	1st quarter p	0.2	23.1	7.1	0.3	—	30.7	18	1,701	730	14	—	2,463	2,463
Per cent change		-42.0	+8.3	+0.1	+6.4	—	+5.6	-16.9	+24.8	+16.8	+26.1	—	+21.9	+21.9
NET EXPORTS:														
1990		-8.3	11.4	-2.7	-7.3	-1.0	-7.9	-511	1,139	28	-519	-200	-63	353
1991		-12.0	6.5	1.0	-6.5	-1.4	-12.4	-637	483	577	-472	-343	-393	-58
1992		-13.4	7.3	3.8	-5.5	-1.4	-9.2	-681	668	690	-395	-369	-87	258
1993		-12.0	13.4	9.1	-3.7	-1.4	5.3	-658	1,069	1,383	-299	-426	1,069	1,400
1994 p		-9.7	42.3	9.9	-2.1	-1.5	39.0	-523	3,036	1,087	-185	-388	3,026	3,263
1993	2nd quarter	-2.8	0.0	2.8	-1.1	-0.3	-1.4	-154	47	403	-89	-105	101	177
	3rd quarter	-3.2	5.0	2.6	-0.5	-0.4	3.6	-172	430	367	-43	-107	475	559
	4th quarter	-3.0	7.0	1.4	-0.9	-0.4	4.1	-173	473	280	-70	-118	393	489
1994	1st quarter p	-2.9	9.8	2.1	-0.9	-0.4	7.6	-164	629	243	-77	-86	545	641
	2nd quarter p	-2.2	9.5	3.3	-0.8	-0.3	9.5	-124	732	381	-68	-87	834	921
	3rd quarter p	-2.5	11.4	2.2	-0.2	-0.4	10.5	-132	846	196	-21	-80	809	786
	4th quarter p	-2.0	11.6	2.3	-0.1	-0.4	11.4	-104	829	267	-20	-135	837	914
1995	1st quarter p	-2.7	12.3	2.7	-0.2	-0.4	11.9	-129	912	383	-20	-169	977	1,027

1. The figures generally correspond to those published under SITC section 3 of the OTS. They do however include some unpublished revisions and additional amendments. The quantity figures differ from those in Table 3, which are partly based on other sources of information. 2. SITC divisions 334, 335, 342, 344, plus Orimulsion from division 278. 3. 'Free on board' – imports adjusted to exclude estimated costs of insurance, freight etc.

PRICES

TABLE 25. Prices of fuels purchased by manufacturing industry in Great Britain¹

		1992	1993				1994				1995
Fuel	Size of consumer	4th quarter	1st quarter	2nd quarter	3rd quarter	4th quarter	1st quarter	2nd quarter	3rd quarter	4th quarter	1st quarter p
COAL (£ per GJ)	Small	2.55	2.53	2.53	2.55	2.42	2.38	2.34	2.29	2.31	2.14
	Medium	2.05	2.06	2.15	2.10	2.08	2.02	2.07	2.09	2.05	1.93
	Large	1.51	1.42	1.37	1.38	1.40	1.42	1.35	1.40	1.36	1.33
	All consumers — average	1.60	1.52	1.49	1.49	1.51	1.51	1.46	1.50	1.46	1.42
	— 10% decile ²	1.54	1.59	1.57	1.47	1.53	1.45	1.49	1.44	1.56	1.34
	— median ²	2.45	2.38	2.44	2.41	2.28	2.13	2.28	2.21	2.09	2.12
	— 90% decile ²	2.81	2.77	2.76	2.77	2.74	2.66	2.69	2.69	2.75	2.76
HEAVY FUEL OIL (£ per tonne) ³	Small	85.3	83.3	82.3	71.6	72.0	75.4	77.4	79.3	87.1	96.3
	Medium	75.3	72.4	71.2	65.4	66.6	70.8	75.3	78.3	81.1	94.1
	Large	72.3	68.2	69.1	64.1	63.2	68.0	70.3	73.8	78.2	88.2
	Of which:										
	Extra large	72.2	67.7	68.7	64.1	62.7	67.9	67.8	71.5	77.1	86.7
	Moderately large	72.5	69.2	69.8	64.2	64.2	68.2	74.9	78.1	80.1	90.8
	All consumers — average	75.0	71.7	71.6	65.5	65.6	69.9	73.0	76.1	80.3	91.3
	— 10% decile ²	69.3	66.5	65.5	60.7	61.3	64.3	68.4	70.4	74.3	85.0
	— median ²	80.2	73.4	73.1	66.5	66.8	72.6	76.0	79.2	84.9	96.3
	— 90% decile ²	96.6	88.9	88.3	80.0	82.8	90.1	85.8	88.0	95.0	105.6
GAS OIL (£ per tonne) ³	Small	158.3	160.4	160.7	154.3	158.5	154.3	154.2	159.4	154.1	154.2
	Medium	148.5	156.5	152.1	144.9	150.6	143.5	143.3	142.3	144.7	142.8
	Large	141.5	140.5	142.7	136.8	137.1	128.1	128.1	127.7	127.1	129.2
	All consumers — average	143.0	143.4	144.5	138.5	139.7	131.1	131.0	130.7	130.4	131.9
	— 10% decile ²	134.0	136.3	132.0	130.5	133.4	125.4	126.8	125.4	124.0	127.7
	— median ²	149.8	152.1	150.9	143.5	148.9	140.7	140.5	137.7	140.4	140.6
	— 90% decile ²	173.5	176.1	178.0	166.8	171.8	166.7	163.4	164.0	165.4	161.3
ELECTRICITY (Pence per kWh)	Small	7.54	7.41	6.24	6.18	7.36	7.16	6.26	6.26	6.51	6.53
	Medium	5.08	5.24	4.68	4.72	4.96	4.82	4.55	4.52	4.95	5.03
	Large	3.86	3.92	3.67	3.73	3.90	3.94	3.65	3.56	3.87	3.93
	Of which:										
	Extra large	3.55	3.60	3.27	3.41	3.54	3.61	3.31	3.16	3.59	3.56
	Moderately large	4.11	4.18	3.98	3.98	4.19	4.19	3.90	3.87	4.08	4.22
	All consumers — average	4.38	4.46	4.07	4.13	4.37	4.35	4.03	3.96	4.29	4.36
	— 10% decile ²	4.40	4.39	4.26	4.24	4.35	4.21	4.20	4.18	4.39	4.40
	— median ²	7.08	7.05	5.80	5.79	6.61	6.42	5.74	5.80	6.13	6.15
	— 90% decile ²	8.83	8.72	7.54	7.75	8.65	8.68	7.68	7.47	8.10	8.52
GAS (Pence per kWh) ⁴	Small	1.359	1.281	1.242	1.329	1.293	1.221	1.288	1.264	1.167	1.183
	Medium	0.962	0.961	0.980	0.983	0.967	0.952	0.931	0.960	0.918	0.944
	Large	0.701	0.724	0.706	0.708	0.711	0.752	0.722	0.736	0.741	0.758
	All consumers — average	0.759	0.789	0.760	0.746	0.771	0.805	0.768	0.759	0.777	0.804
	— Firm ⁵	0.947	0.959	0.927	0.882	0.935	0.941	0.897	0.853	0.862	0.894
	— Interruptible ⁵	0.627	0.642	0.637	0.650	0.635	0.647	0.657	0.684	0.681	0.687
	— Tariff ⁵	1.420	1.403	1.394	1.380	1.368	1.360	1.414	1.397	1.344	1.338
	— 10% decile ²	0.851	0.891	0.894	0.864	0.882	0.866	0.866	0.860	0.850	0.853
	— median ²	1.379	1.357	1.321	1.363	1.298	1.281	1.196	1.138	1.144	1.105
	— 90% decile ²	1.542	1.514	1.515	1.600	1.513	1.499	1.507	1.513	1.486	1.477
MEDIUM FUEL OIL (£ per tonne) ³	All consumers — average ⁶	81.0	78.7	79.7	77.6	79.2	81.6	83.1	85.7	87.7	101.4
LIQUEFIED PETROLEUM GASES (£ per tonne)	All consumers — average ⁶	155.5	161.7	158.3	153.5	141.2	143.5	133.8	139.4	141.0	147.4
HARD COKE (£ per tonne) ⁷	All consumers — average ⁶	113.0	117.6	117.0	117.6	116.5	114.9	106.9	93.8	89.0	105.2
Realised in new and renewed contracts											
HEAVY FUEL OIL (£ per tonne) ^{3,8}		76.8	70.2	70.9	64.5	65.6	67.3	79.4	76.3	87.2	93.0
GAS OIL (£ per tonne) ^{3,8}		147.0	147.9	145.4	141.8	141.7	129.4	131.5	129.8	129.1	130.8

1. Average prices paid (exclusive of VAT) by respondents to a Department of Trade and Industry survey of some 1,200 manufacturing sites. The average price for each size of consumer is obtained by dividing the total quantity of purchases, for each fuel, into their total value. Prices vary widely around the average values shown (see footnote 2). Purchases of fuels used as raw materials in manufacturing are excluded. For further details, see the annual "Digest of United Kingdom Energy Statistics" (HMSO). 2. The 10% decile is the point within the complete range of prices below which the bottom 10% of those prices fall. Similarly the 90% decile is the point above which the top 10% of the prices occur. The median is the midway point. Thus, these values show the spread of prices paid. The deciles and the median are calculated by giving equal 'weight' to each purchaser, whereas the average prices, for each size-band and all consumers are given 'weight' according to the quantity purchased. 3. Oil product prices include hydrocarbon oil duty. From the first quarter of 1995 the rates per tonne are £16.70 for Heavy Fuel Oil, £17.15 for Medium Fuel Oil and £25.08 for Gas Oil. 4. Covers all supplies of natural gas including, for example, those purchased direct from onshore/offshore gas fields. Respondents purchasing more than one type of supply (tariff, firm contract and interruptible contract) are treated as separate entities in respect of each type of supply. 5. Prices by type of supply cover consumers of all sizes. 6. No further details of prices can be given owing to the small number of respondents purchasing this fuel. 7. Excludes breeze and blast furnace supplies. 8. Derived from prices reported by nine main oil marketing companies and relate to average prices (excluding VAT) realised on medium sized new contracts or contracts renewed at a changed price.

Note on sizebands used in Table 25

For coal, heavy fuel oil, gas oil, electricity and gas prices are shown in table 25 for various sizes of consumers. These sizebands are defined in terms of the approximate annual purchases by the consumers within them. These are shown below.

Fuel	Range of annual purchases				
	Large	of which:		Medium	Small
		Extra large	Moderately large		
	Greater than	Greater than			Less than
Coal (tonnes)	7,600	n/a	n/a	760 to 7,600	760
Heavy fuel oil (tonnes)	4,900	15,000	4,900 to 15,000	490 to 4,900	490
Gas oil (tonnes)	175	n/a	n/a	35 to 175	35
Electricity (thousand kWh)	8,800	150,000	8,800 to 150,000	880 to 8,800	880
Gas* (thousand kWh)	8,800	n/a	n/a	1,500 to 8,800	1,500

* Respondents purchasing more than one type of supply (tariff, firm contract and interruptible contract) are treated as separate entities in respect of each type of supply.

TABLE 26. Average prices of fuels purchased by the major UK power producers¹ and by British Gas

	Major power producers ¹			British Gas	
	Coal ²	Oil ^{3,4}	Natural Gas ⁵	Natural gas ⁶	
	£ per tonne	£ per tonne	pence per kWh	pence per kWh	
1990	43.77	53.49	..	0.575	1990/91
1991	43.47	56.62	..	0.595	1991
1992	45.52	57.76	..	0.590	1992
1993	42.44	55.90	0.703	0.600	1993
1994	36.35	67.90 r	0.667	0.618	1994
1992 2nd quarter	45.14	55.92	..	0.579	
3rd quarter	46.32	54.35	..	0.579	
4th quarter	46.05	64.96	..	0.619	
1993 1st quarter	45.97	62.33	0.764	0.600	
2nd quarter	40.94	57.15	0.632	0.600	
3rd quarter	40.46	52.90	0.631	0.600	
4th quarter	39.53	52.08	0.883	0.600	
1994 1st quarter	33.98	62.62 r	0.679	0.600	
2nd quarter	38.92	66.13 r	0.642	0.624	
3rd quarter	38.10	72.16 r	0.678	0.624	
4th quarter	34.29	71.34 r	0.666	0.624	
1995 1st quarter p	32.94	86.70 r	0.670	0.624	

1. See definitions below Table 23. 2. Includes slurry. 3. Includes oil for burning, for gas turbines and for internal combustion engines (other than for use in road vehicles). Excludes any natural gas liquids burnt at Peterhead power station. 4. Includes hydrocarbon oil duty. 5. Prior to 1993 gas prices are not available for reasons of confidentiality. 6. Quarterly figures and the 1994 annual figure are estimates. Prior to 1991 annual figures are for financial years to 31 March. The prices exclude the Government's levy on indigenous supplies. Including the levy, the average prices, converted to pence per kWh, were as follows:

	pence per kWh
1989/90	0.589
1990/91	0.621
1991	0.641
1992	0.639
1993	0.641
1994	0.663

TABLE 27. Fuel price indices for the industrial sector¹

1990=100

	Unadjusted					Seasonally adjusted			
	Coal ²	Heavy fuel oil ²	Gas ³	Electricity ³	Total fuel	Gas ³	Electricity ³	Total fuel	
Current fuel price index numbers									
1990	100.0	100.0	100.0	100.0	100.0				
1991	98.5	87.8	101.0	103.3	100.4				
1992	99.7	84.5	104.5	109.1	104.2				
1993	93.6	90.0	99.2	114.2	106.9				
1994	92.5	97.7	95.0	111.6	105.5				
Per cent change	-1.2	+8.5	-4.2	-2.3	-1.3				
1993 3rd quarter	93.0	86.1	93.9	107.6	101.2	100.5	114.2	106.6	
4th quarter	94.0	86.1	100.1	119.6	109.9	99.0	113.0	105.6	
1994 1st quarter	94.2	92.1	102.3	117.3	109.7	96.3	112.5	105.6	
2nd quarter	90.7	96.0	95.2	106.6	102.1	96.1	111.3	105.3	
3rd quarter	93.5	100.2	90.0	105.0	100.9	96.1	111.4	106.0	
4th quarter	91.1	105.7	92.6	116.0	108.9	91.4	109.8	104.8	
1995 1st quarter p	88.6	120.2	94.8	118.2	112.6	89.4	113.3	108.5	
Per cent change	-6.0	+30.6	-7.4	+0.8	+2.6	-7.2	+0.7	+2.7	
Fuel price index numbers relative to the GDP deflator									GDP deflator ⁴
1990	100.0	100.0	100.0	100.0	100.0				100.0
1991	92.5	82.5	94.8	97.0	94.3				106.5
1992	89.8	76.0	94.0	98.2	93.8				111.1
1993	81.6	78.4	86.4	99.5	93.2				114.8
1994	78.9r	83.3r	81.1r	95.2r	90.0r				117.2r
Per cent change	-3.2r	+6.3	-6.2r	-4.3	-3.4r				+2.1r
1993 3rd quarter	80.6r	74.6r	81.3r	93.3r	87.7r	87.1r	99.0r	92.3r	115.4r
4th quarter	81.0	74.2	86.3	103.1	94.7	85.4	97.4	91.0	116.0
1994 1st quarter	80.7	78.9	87.7	100.5	94.0	82.5	96.4	90.5	116.7
2nd quarter	77.6r	82.2r	81.5r	91.2r	87.4r	82.3r	95.3r	90.1r	116.8r
3rd quarter	79.8	85.5	76.8	89.6r	86.1	82.0r	95.0r	90.4r	117.2r
4th quarter	77.2r	89.6r	78.5r	98.3r	92.3r	77.5r	93.0r	88.8r	118.0r
1995 1st quarter p	74.9r	101.6r	80.1r	99.9r	95.2r	75.5r	95.8r	91.7r	118.3r
Per cent change	-7.2r	+28.8r	-8.6r	-0.6r	+1.2r	-8.5r	-0.7r	+1.4r	+1.4r

1. Index numbers shown represent the average for the period specified. VAT is excluded. 2. Indices based on a survey of the prices of fuels delivered to industrial consumers in Great Britain only as shown in Table 25. 3. Indices based on the average unit value of sales to industrial consumers. 4. GDP deflator at market prices and seasonally adjusted.

TABLE 28. Fuel price indices for the domestic sector^{1 2}

1990=100

	Coal and coke	Gas	Electricity	Heating oils ³	Fuel and light	Petrol and oil	Fuel, light, petrol and oil
Current fuel price index numbers							
1990	100.0	100.0	100.0	100.0	100.0	100.0	100.0
1991	106.4	106.9	110.1	96.2	107.9	107.5	107.7
1992	110.5	106.7	115.8	84.6	110.2	110.5	110.3
1993	111.0	102.6	115.4	89.9	108.9	119.3	113.4
1994	118.2	108.8	119.2	90.0	113.7	124.8	118.7
Per cent change	+6.4	+6.0	+3.3	+0.1	+4.5	+4.6	+4.7
1993 3rd quarter	108.8	102.7	114.6	87.2	108.3	120.6	113.6
4th quarter	113.3	102.6	114.5	89.6	108.5	120.8	113.8
1994 1st quarter	113.8	102.6	113.3	86.1	107.8	122.8	114.6
2nd quarter	119.2	110.8	121.0	92.5	115.6	124.1	119.4
3rd quarter	118.1	110.8	121.6	91.1	115.7	126.4	120.5
4th quarter	121.8	110.8	121.0	90.3	115.5	125.7	120.1
1995 1st quarter	122.1	111.8	121.0	98.0 r	115.9	129.8	122.2
Per cent change	+7.3	+9.0	+6.8	+3.7	+7.5	+5.7	+6.6
Fuel price index numbers relative to the GDP deflator							
							GDP deflator⁴
1990	100.0	100.0	100.0	100.0	100.0	100.0	100.0
1991	99.9	100.4	103.3	90.3	101.3	100.9	101.2
1992	99.5	96.1	104.2	76.2	99.2	99.4	99.3
1993	96.7	89.4	100.5	78.3	94.8	103.9	98.8
1994	100.9	92.8 r	101.7 r	76.8 r	97.0 r	106.5 r	101.3 r
Per cent change	+4.3 r	+3.9 r	+1.2 r	-1.9 r	+2.3 r	+2.5	+2.6 r
1993 3rd quarter	94.3 r	89.0 r	99.3 r	75.6 r	93.8 r	104.5 r	98.4 r
4th quarter	97.7	88.5	98.7	77.2	93.5	104.1	98.1
1994 1st quarter	97.5	87.9	97.1	73.8	92.4	105.2	98.2
2nd quarter	102.1 r	94.9 r	103.6 r	79.2 r	99.0 r	106.3 r	102.3 r
3rd quarter	100.8 r	94.5 r	103.8	77.7 r	98.7 r	107.9	102.8 r
4th quarter	103.2 r	93.9 r	102.5 r	76.5 r	97.9 r	106.5 r	101.8 r
1995 1st quarter	103.2 r	94.5 r	102.3 r	75.5 r	98.0 r	109.7 r	103.3 r
Per cent change	+5.8 r	+7.5 r	+5.4 r	+2.3 r	+6.1 r	+4.3 r	+5.2 r

1. Index numbers shown represent the average for the period specified. 2. Figures from the 2nd quarter of 1994 for Coal and Coke, Gas, Electricity and Heating Oils include VAT at 8 per cent. 3. Bottled gas and oil fuel. 4. GDP deflator (market prices, seasonally adjusted).

TABLE 29. Typical retail prices of petroleum products and a crude oil price index

		Motor spirit ¹		Derv ¹	Standard grade burning oil ^{1 2}	Gas oil ^{1 3}	Crude oil acquired by refineries ⁴	
		4 star	Super unleaded					Premium unleaded
		Pence per litre						1990 = 100
1990	January	40.92	..	38.37	39.21	15.45	15.46	95.6
1991	January	45.13	44.38	42.14	43.31	17.52	17.13	109.5
1992	January	46.93	45.57	43.43	43.19	12.47	12.02	79.7
1993	January	51.27	49.76	47.13	47.05	14.10	13.52	98.7
1994	January	55.50	54.48	50.83	51.72	12.94	12.72	72.0
1994	Feb	55.91	54.60	50.52	51.03	12.87	12.65	70.0
	Mar	55.73	54.33	50.35	50.62	12.63	12.37	69.5
	Apr	56.40	55.18	51.21	51.38	13.64	13.63	77.3
	May	56.72	55.69	51.32	51.51	13.62	13.72	82.0
	June	57.18	56.26	51.84	51.54	13.19	13.30	84.5
	July	56.94	56.20	51.42	51.38	13.41	13.25	88.5
	Aug	58.35	57.65	52.95	52.10	13.51	13.32	85.6
	Sep	57.68	57.31	52.67	51.88	13.53	13.14	81.6
	Oct	57.35	56.70	51.92	51.33	13.63	13.27	83.8
	Nov	56.41	55.78	51.11	50.84	13.73	13.71	88.4
	Dec	58.32	57.57	52.79	53.04	13.68	14.10	82.5
	1995	Jan	59.48	58.58	53.91	54.25	13.32	13.93
Feb		58.92	57.99	53.25	53.65	13.60	13.80	86.3
Mar		59.30	58.31	53.61	53.97	13.70	13.77	85.5
Apr		60.48	59.38	54.53	54.85	13.89	14.14	90.3
May p		60.79	59.67	55.07	55.01	13.78	13.92	93.1

1. These approximate estimates are generally representative of prices paid on or about the 15th of the month. Estimates are based on information provided by oil marketing companies. The January 1989 price for unleaded motor spirit is based on information from fewer companies and is therefore less reliable than the other estimates given. 2. These estimates are for deliveries of up to 1,000 litres; such deliveries attract 8% VAT from 1 April 1994. 3. These estimates are for deliveries of 2,000 to 5,000 litres; such deliveries attract 8% VAT from 1 April 1994. 4. Price index for supplies received by refineries in the UK from both indigenous and imported sources. It represents the average for the month calculated in sterling on a cif basis.

STANDARD CONVERSION FACTORS AND APPROXIMATE EQUIVALENTS¹

1 tonne of oil equivalent	= 397 therms	1 kilowatt (kW)	= 1,000 watts
	= 11,630 kWh	1 megawatt (MW)	= 1,000 kilowatts
1 therm	= 29.3071 kilowatt hours (kWh)	1 gigawatt (GW)	= 1,000 megawatts
1 gigajoule (GJ)	= 9.4781 therms	1 terawatt (TW)	= 1,000 gigawatts
1 tonne of UK crude oil	= 7.55 barrels	1 petawatt (PW)	= 1,000 terawatts
1 gallon (UK)	= 4.54609 litres		

1. More detailed information on conversion factors, approximate equivalents and calorific values of fuels is given on pages 137 to 140 of the Digest of UK Energy Statistics 1994.

Supplement: Renewable energy statistics and trends for the United Kingdom

The Energy Technology Support Unit (ETSU) produces the annual renewable energy statistics for the Department of Trade and Industry. ETSU collects information from renewable energy schemes throughout the United Kingdom. This information is stored in the Renewable Energy Statistics Database (RESTATS) and used by ETSU to calculate the annual contribution made by renewable energy. These statistics are published in the 'Digest of United Kingdom Energy Statistics', 'Energy Trends', and the 'RESTATS' news sheet.

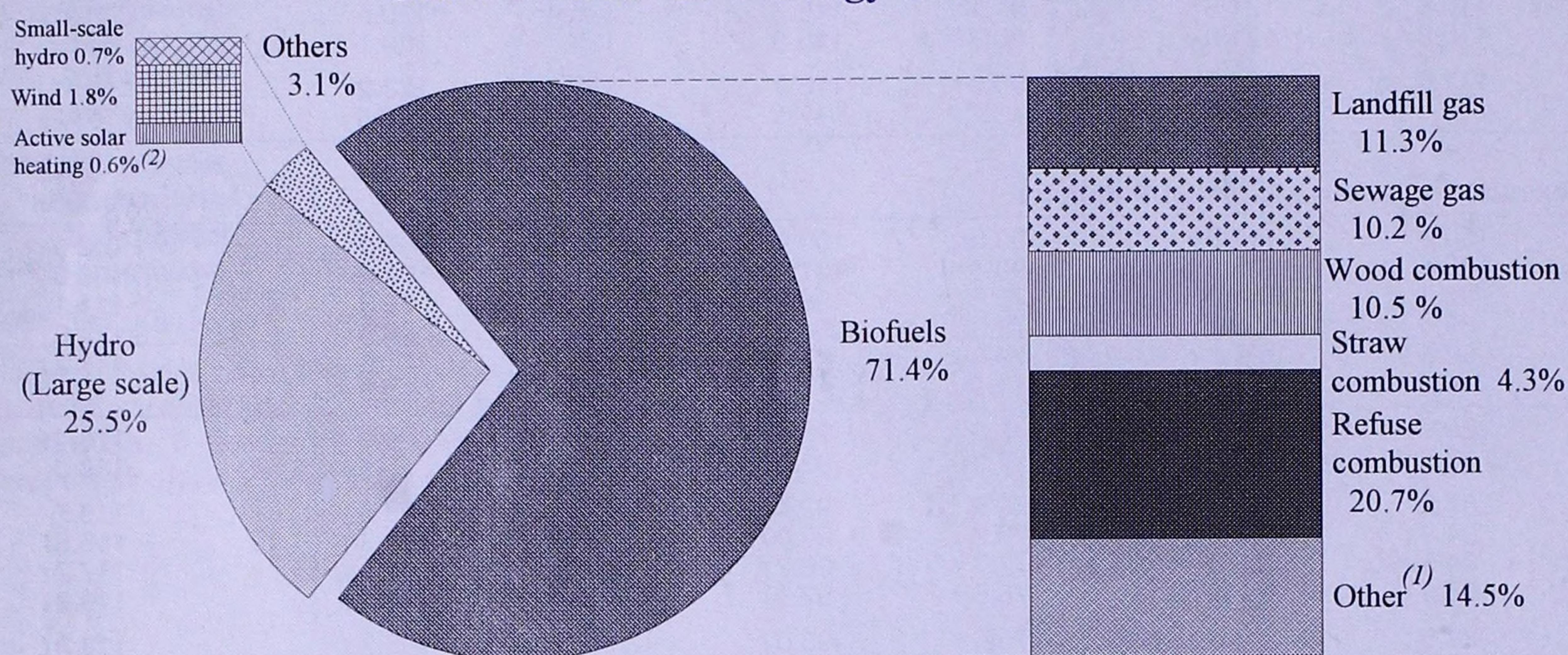
tributed a little under 1 per cent of the United Kingdom's total primary energy requirements in 1994.

In **Chart 2** the electrical capacity of renewable energy generating plant is presented in terms of Declared Net Capacity (DNC). DNC covers the maximum continuous rating of the generating plant, less the amount of power the plant uses. DNC also takes account of the nominal maximum potential of the plant to supply power. This means that for wind, tidal, wave, and solar power a conversion factor is used to account for the intermittent nature of

these resources. For example, the DNC of wind power is approximately 43% of its total installed capacity.

The Renewable Energy Advisory Group (REAG) recommended the Government underwrite a floor level of 1,500 MWe DNC of new renewable generating capacity by the year 2000. Table 2 shows how the total DNC is rising. This is principally due to the implementation of the Non-Fossil Fuel Obligation (NFFO). The NFFO guarantees a fixed premium price for electricity supplied to the grid by renewable energy schemes. The NFFO started in 1990. By the end of 1994, 144 separate generat-

Chart 1: Renewable energy utilisation 1994



Total renewables used = 1.67 million tonnes of oil equivalent

(1) 'Other' includes farm waste digestion and chicken litter, industrial and hospital waste combustion.

(2) Excludes all passive use of solar energy.

RESTATS holds information on heat and electricity generated from the following sources:

- Biofuels, including the combustion of biomass and wastes, gas from landfill sites and digestion processes,
- Hydro-electricity, both large and small-scale,
- Wind turbines and wind-farms,
- Geothermal Aquifers.

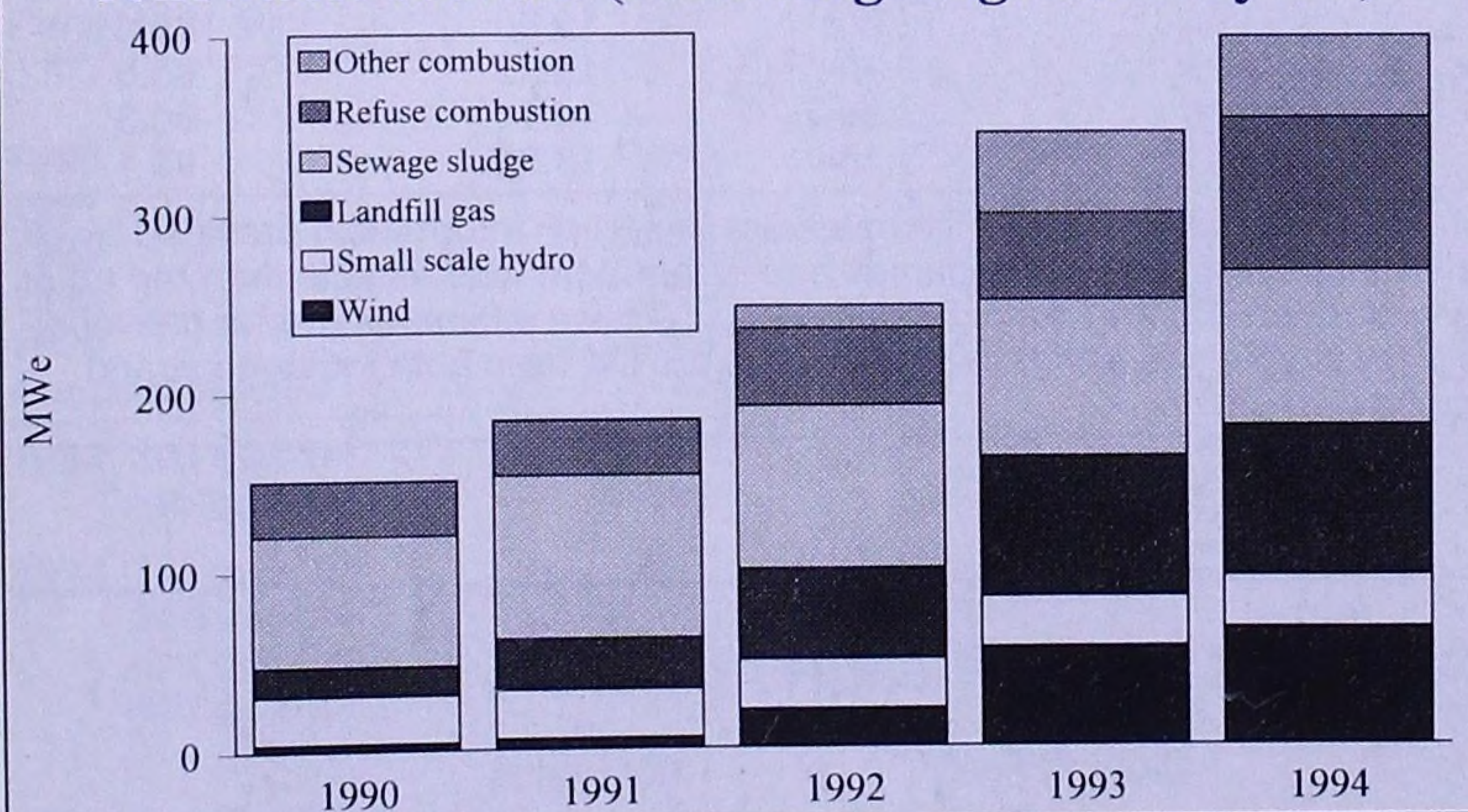
Chart 1 shows the contribution made by each of the different renewable energy sources in 1994. The largest contribution was from biofuels with large scale hydro electricity production providing the majority of the remainder. Overall, renewable sources con-

ing projects were supplying electricity under the scheme.

More detailed information on renewable energy statistics can be found in the 1995 edition of the Digest of United Kingdom Energy Statistics (see below). For further information on the RESTATS project and the RESTATS news sheet please contact:

Miss Jenny Akehurst
RESTATS Database Manager
ETSU, Building 154
Harwell Oxon
OX11 0RA

Chart 2: Capacity of electricity generated from renewable sources (excluding large scale hydro)



DIGEST OF THE UNITED KINGDOM ENERGY STATISTICS 1995

The 1995 edition of the annual Digest of United Kingdom Energy Statistics was published on 27 July.

A summary of the contents of this year's Digest is contained in the leaflet enclosed.

Copies of the Digest may be purchased from HMSO, price £24.95. As with the previous edition, a disk version of the Digest, containing tables and text, is available directly from the Department of Trade and Industry. Details of the format available and the cost may be obtained from Roger Barty, EPA 4a, Department of Trade and Industry, Room 3.3.18, 1 Palace Street, London SW1E 5HE (tel 0171-238-3575).

Also enclosed with this issue of Energy Trends is a copy of the pocket sized card containing a selection of the statistics from the new Digest.

Enquiries about the data in, or subscriptions to, this bulletin should be addressed to: EPA4, (attention: Jane Rees-Davies) Room 3.3.18, Department of Trade & Industry, 1 Palace Street, London SW1E 5HE (tel: 0171-238 3606). Suggestions about changes to the content or scope of the bulletin should be sent to the same address, (attention: Mike Ward).

© Crown Copyright. Reproduction of information contained herein is prohibited without prior written permission. The Department of Trade & Industry reserves the right to alter or discontinue the text of or any table in this bulletin without further notice.